

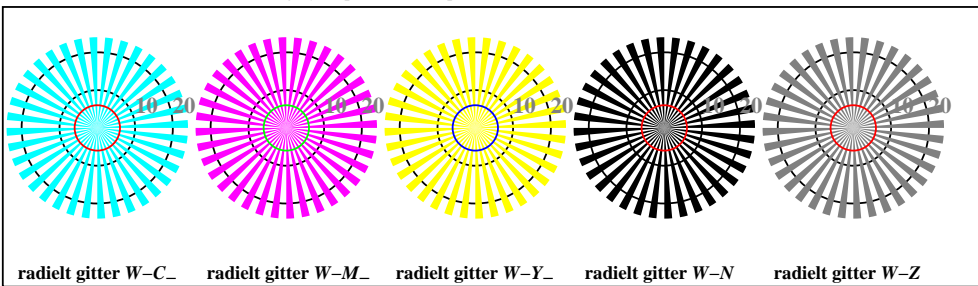
http://130.149.60.45/~farbmetrik/TN93/TN93L0FA.TXT /.PS; start output  
F: 3D-linearisering TN93/TN93LJ30FA.DAT i fil (F), side 1/2

se lignende filer: <http://130.149.60.45/~farbmetrik/TN93/TN93.HTM>  
teknisk informasjon: <http://www.ps.bam.de> eller <http://130.149.60.45/~farbmetrik>

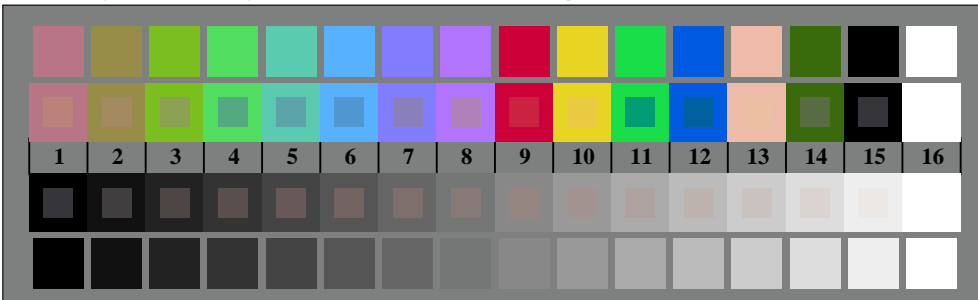
TUB registrering: 20150701-TN93/TN93L0FA.TXT /.PS  
anvendelse for måling av offsettrykk output



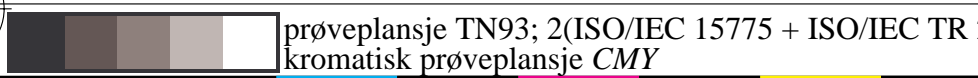
TN930-3, Picture B1W-; and 2 + 16 grey steps (sf); ; PS operator 4 colorimage



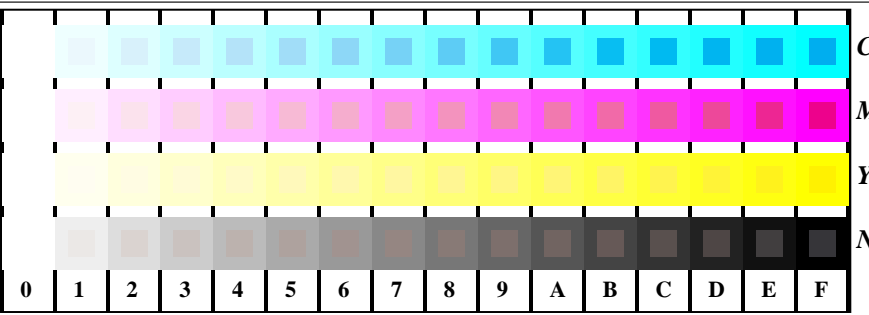
TN930-5, Figur B2W-; radielt gitter W-C-; W-M-; W-Y-; W-N-; PS operator rgb->rgb\_setrgbcolor



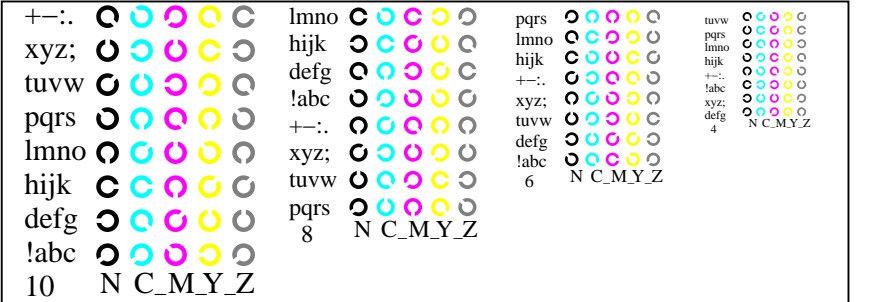
TN930-7, Figur B3W-; 14 CIE-prøvefarger og 2 + 16 gråtrinn (sf); rgb/cmy0 set(rgb/cmyk)color



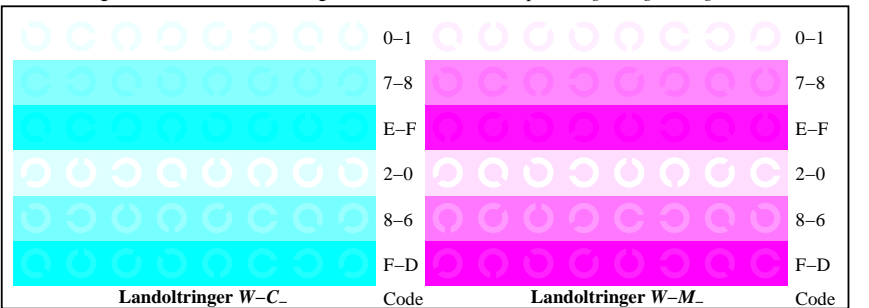
prøveplansje TN93; 2(ISO/IEC 15775 + ISO/IEC TR 24705)input: rgb/cmyk -> w/rgb/cmyk-  
kromatisk prøveplansje CMY output: ingen ending



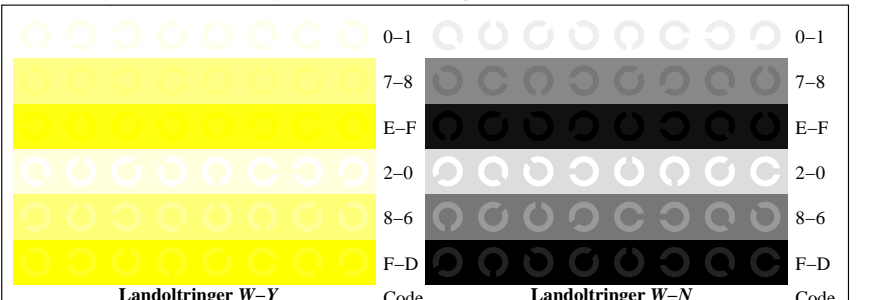
TN931-1, Figur B4W-; 16 ekvidistante trinn W-C-; W-M-; W-Y-; W-N-; rgb/cmy0 set(rgb/cmyk)color



TN931-3, Figur B5W-; Skrift Landoltringer N; C-; M-; Y-; Z; PS operator rgb->rgb\_setrgbcolor



TN931-5, Figur B6W-; Landoltringer W-C-; W-M-; PS operator rgb setrgbcolor



TN931-7, Figur B7W-; Landoltringer W-Y-; W-N-; PS operator rgb setrgbcolor

