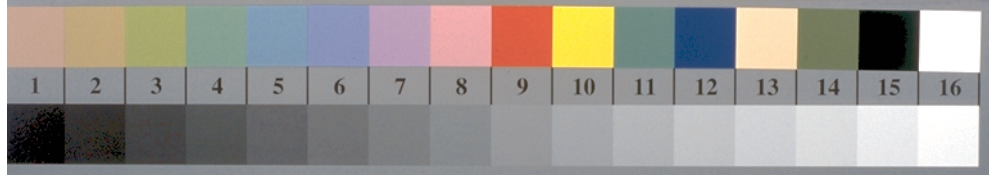
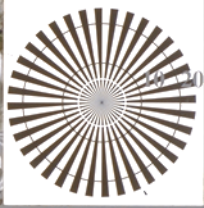
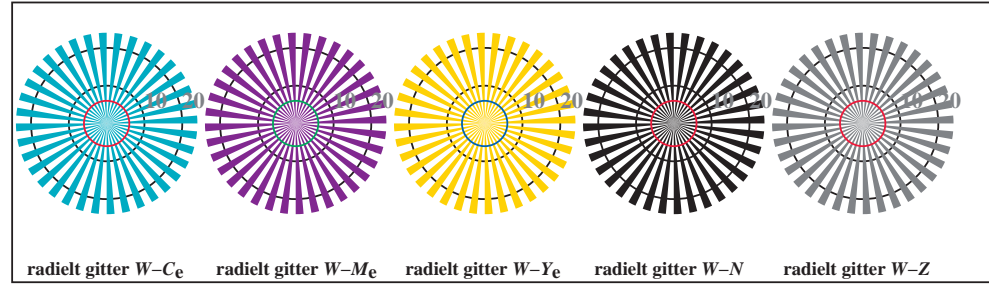


http://130.149.60.45/~farbmetrik/TN93/TN93L0FP.PDF /.PS; 3D-linearisering
F: 3D-linearisering TN93/TN93LJ30FP.DAT i fil (F), side 2/2

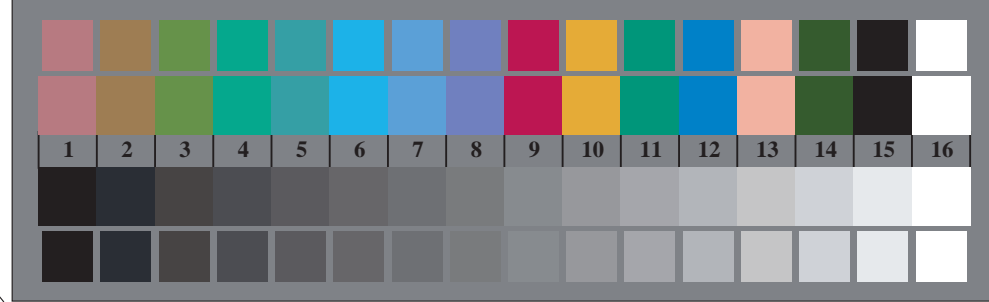
se lignende filer: http://130.149.60.45/~farbmetrik/TN93/TN93.HTM
teknisk informasjon: http://www.ps.bam.de eller http://130.149.60.45/~farbmetrik



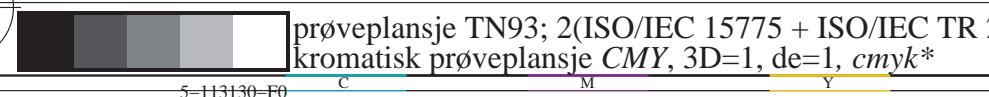
TN930-3, Picture B1Wde: and 2 + 16 grey steps (sf); ; PS operator 4 colorimage



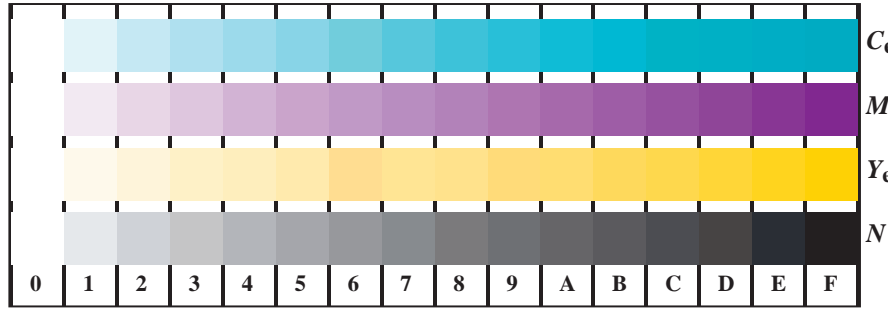
TN930-5, Figur B2Wde: radielt gitter W-Ce; W-Me; W-Ye; W-N; PS operator rgb->rgbde setrgbcolor



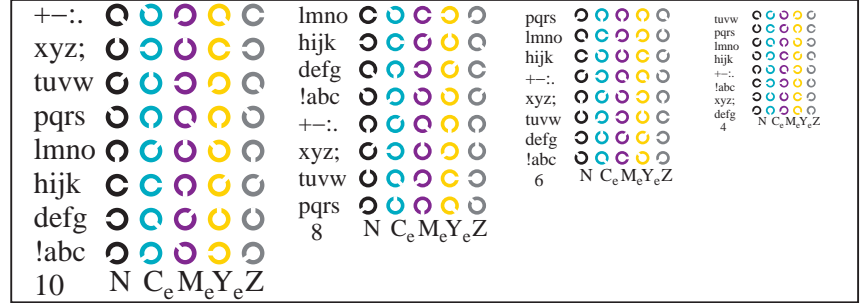
TN930-7, Figur B3Wde: 14 CIE-prøvefarger og 2 + 16 gråtrinn (sf); rgb/cmy0->rgbde setrgbcolor



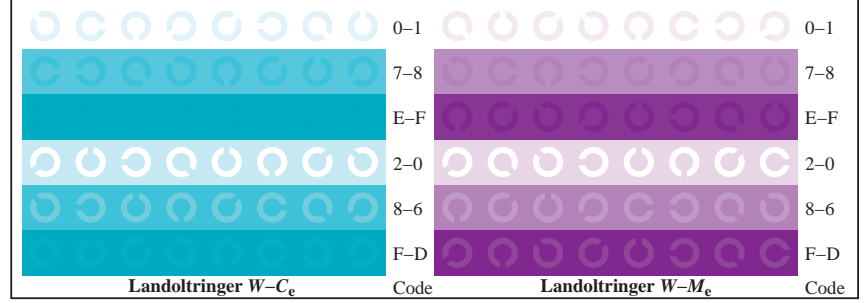
prøveplansje TN93; 2(ISO/IEC 15775 + ISO/IEC TR 24705)input: rgb/cmyk -> rgbde
kromatisk prøveplansje CMY, 3D=1, de=1, cmyk*
output: 3D-linearisering til cmyk*de



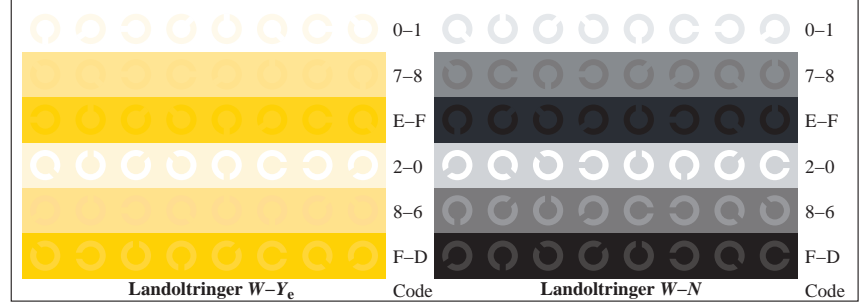
TN931-1, Figur B4Wde: 16 ekvidistante trinn W-Ce; W-Me; W-Ye; W-N; rgb/cmy0->rgbde setrgbcolor



TN931-3, Figur B5Wde: Skrift Landoltringer N; Ce; Me; Ye; Z; PS operator rgb->rgbde setrgbcolor



TN931-5, Figur B6Wde: Landoltringer W-Ce; W-Me; PS operator rgb->rgbde setrgbcolor



TN931-7, Figur B7Wde: Landoltringer W-Ye; W-N; PS operator rgb->rgbde setrgbcolor

TUB registrering: 20150701-TN93/TN93L0FP.PDF /.PS
anvendelse for måling av offsettrykk output, separasjoncmykn6* (CMYK)
TUB-material: code=rh4ta