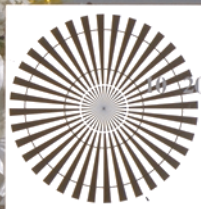
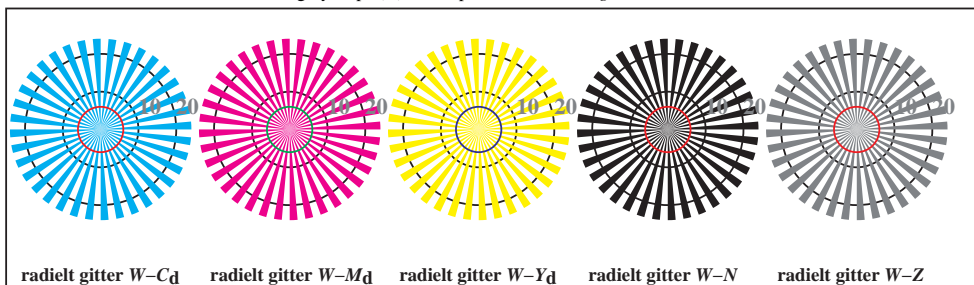


http://130.149.60.45/~farbmetrik/TN93/TN93L0FP.PDF /.PS; 3D-linearisering
F: 3D-linearisering TN93/TN93LJ30FP.DAT i fil (F), side 2/2

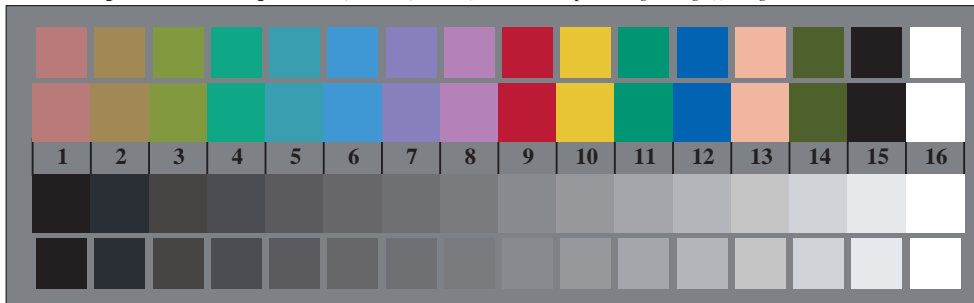


TN930-3, Picture B1Wdd: and 2 + 16 grey steps (sf); ; PS operator 4 colorimage



radielt gitter W-C_d radielt gitter W-M_d radielt gitter W-Y_d radielt gitter W-N radielt gitter W-Z

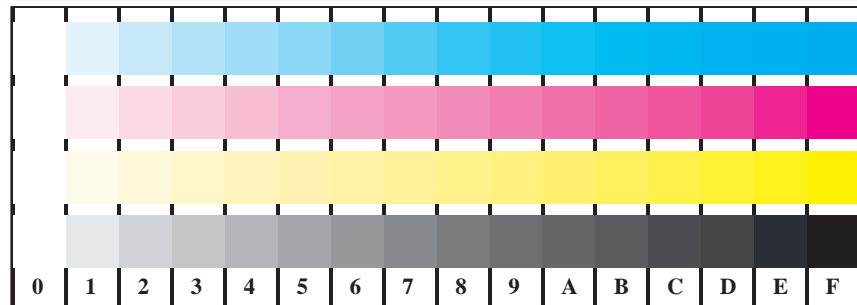
TN930-5, Figur B2Wdd: radielt gitter W-C_d; W-M_d; W-Y_d; W-N; PS operator rgb->rgb_{dd} setrgbcolor



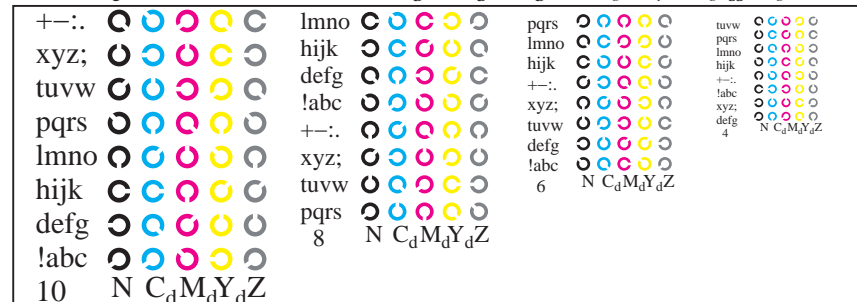
TN930-7, Figur B3Wdd: 14 CIE-prøvefarger og 2 + 16 gråtrinn (sf); rgb/cmy0->rgb_{dd} setrgbcolor



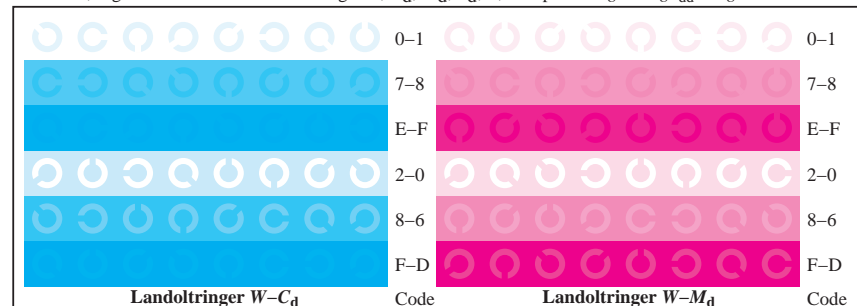
prøveplansje TN93; 2(ISO/IEC 15775 + ISO/IEC TR 24705)input: rgb/cmyk -> rgb_{dd}
kromatisk prøveplansje CMY, 3D=1, de=0, cmyk*
output: 3D-linearisering til cmyk*_{dd}



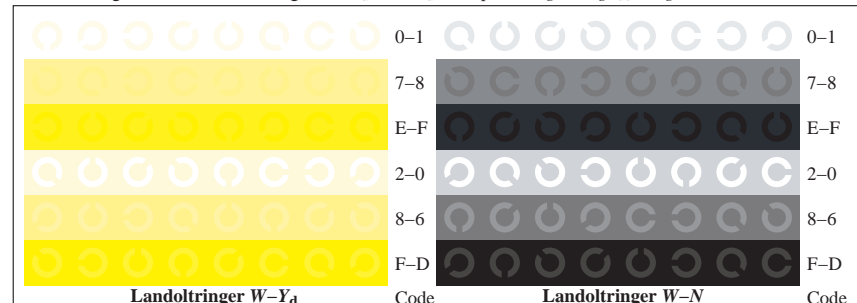
TN931-1, Figur B4Wdd: 16 ekvidistante trinn W-C_d; W-M_d; W-Y_d; W-N; rgb/cmy0->rgb_{dd} setrgbcolor



TN931-3, Figur B5Wdd: Skrift Landoltringer N; C_d; M_d; Y_d; Z; PS operator rgb->rgb_{dd} setrgbcolor



TN931-5, Figur B6Wdd: Landoltringer W-C_d; W-M_d; PS operator rgb->rgb_{dd} setrgbcolor



TN931-7, Figur B7Wdd: Landoltringer W-Y_d; W-N; PS operator rgb->rgb_{dd} setrgbcolor

se lignende filer: http://130.149.60.45/~farbmetrik/TN93/TN93.HTM
teknisk informasjon: http://www.ps.bam.de eller http://130.149.60.45/~farbmetrik

TUB registrering: 20150701-TN93/TN93L0FP.PDF /.PS
anvendelse for måling av offsettrykk output, separasjoncmyk* (CMYK)

TUB-material: code=rh4ta