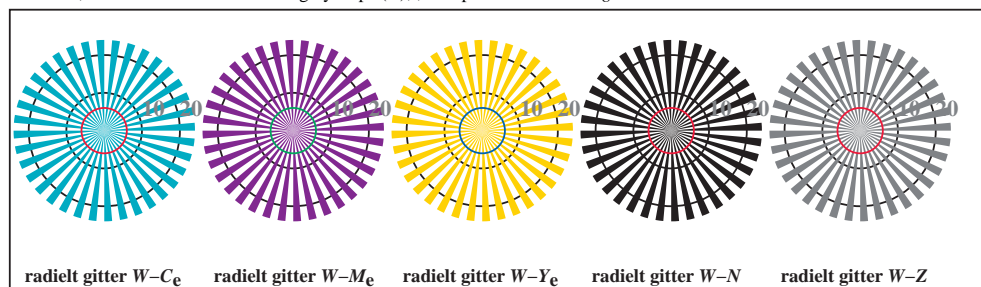




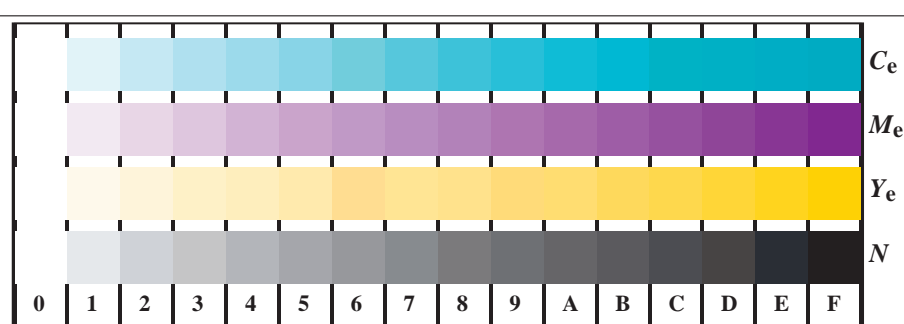
TN930-3, Picture B1Wde; and 2 + 16 grey steps (sf); PS operator 4 colorimage



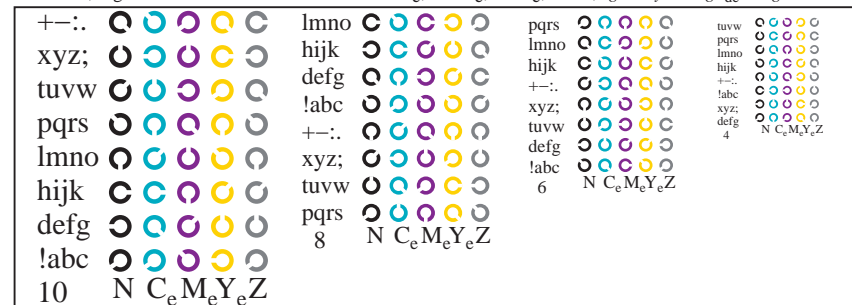
TN930-5, Figur B2Wde; radielt gitter $W-C_e$; $W-M_e$; $W-Y_e$; $W-N$; PS operator $rgb \rightarrow rgb_{de}$ setrgbcolor



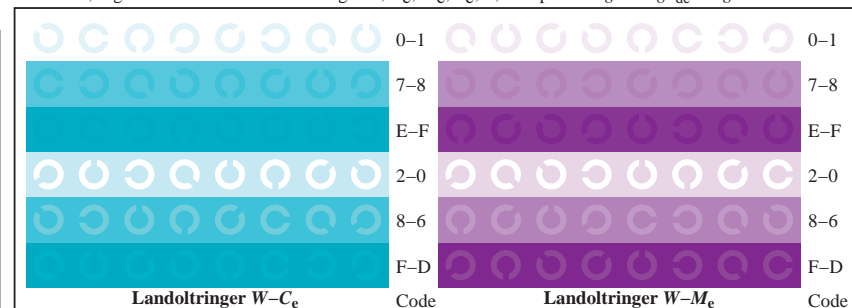
TN930-7, Figur B3Wde; 14 CIE-prøvefarger og 2 + 16 gråtrinn (sf); $rgb/cmy0 \rightarrow rgb_{de}$ setrgbcolor



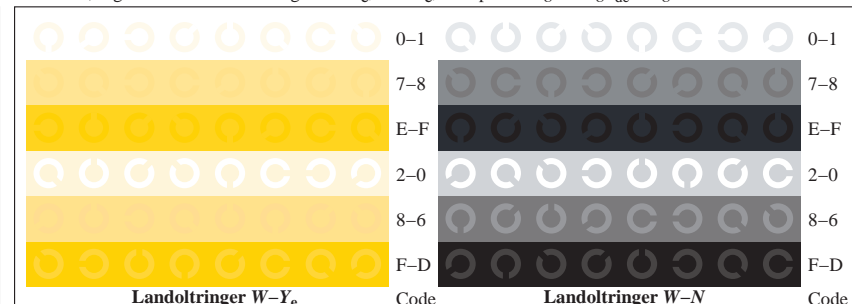
TN931-1, Figur B4Wde; 16 ekvidistante trinn $W-C_e$; $W-M_e$; $W-Y_e$; $W-N$; $rgb/cmy0 \rightarrow rgb_{de}$ setrgbcolor



TN931-3, Figur B5Wde; Skrift Landoltringer N ; C_e ; M_e ; Y_e ; Z ; PS operator $rgb \rightarrow rgb_{de}$ setrgbcolor



TN931-5, Figur B6Wde; Landoltringer $W-C_e$; $W-M_e$; PS operator $rgb \rightarrow rgb_{de}$ setrgbcolor



TN931-7, Figur B7Wde; Landoltringer $W-Y_e$; $W-N$; PS operator $rgb \rightarrow rgb_{de}$ setrgbcolor