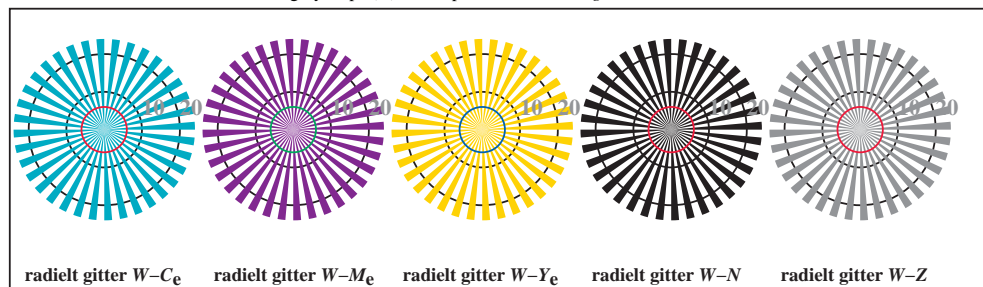




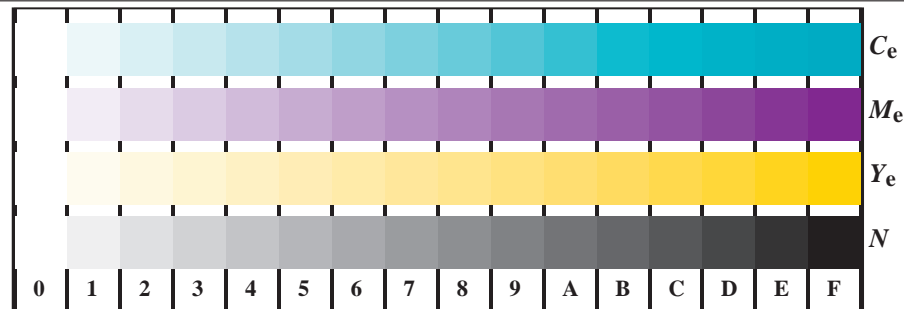
TN930-3, Picture B1We: and 2 + 16 grey steps (sf); ; PS operator 4 colorimage



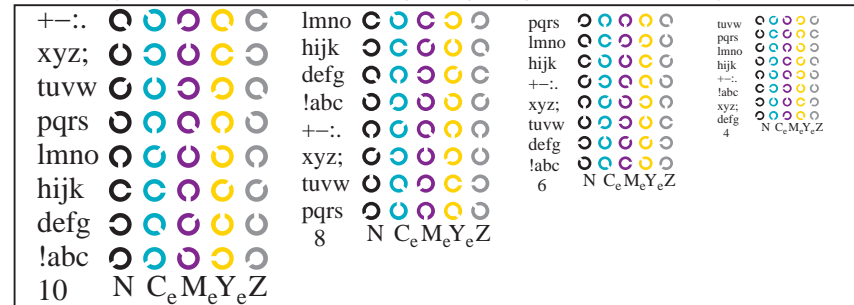
TN930-5, Figur B2We: radielt gitter W-C<sub>e</sub>; W-M<sub>e</sub>; W-Y<sub>e</sub>; W-N; PS operator rgb->rgb<sub>e</sub> setrgbcolor



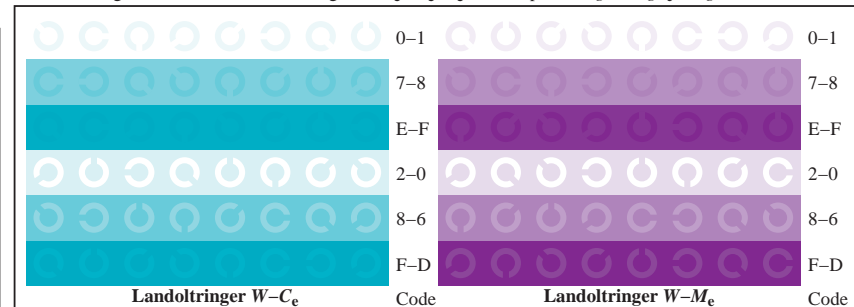
TN930-7, Figur B3We: 14 CIE-prøvefarger og 2 + 16 gråtrinn (sf); rgb/cmy0->rgb<sub>e</sub> setrgbcolor



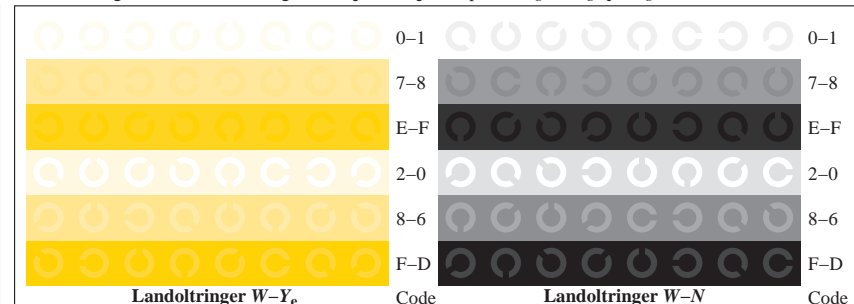
TN931-1, Figur B4We: 16 ekvidistante trinn W-C<sub>e</sub>; W-M<sub>e</sub>; W-Y<sub>e</sub>; W-N; rgb/cmy0->rgb<sub>e</sub> setrgbcolor



TN931-3, Figur B5We: Skrift Landoltringer N; C<sub>e</sub>; M<sub>e</sub>; Y<sub>e</sub>; Z; PS operator rgb->rgb<sub>e</sub> setrgbcolor



TN931-5, Figur B6We: Landoltringer W-C<sub>e</sub>; W-M<sub>e</sub>; PS operator rgb->rgb<sub>e</sub> setrgbcolor



TN931-7, Figur B7We: Landoltringer W-Y<sub>e</sub>; W-N; PS operator rgb->rgb<sub>e</sub> setrgbcolor