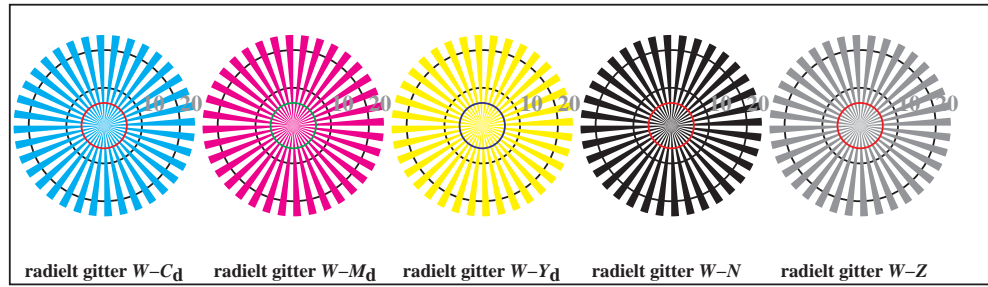
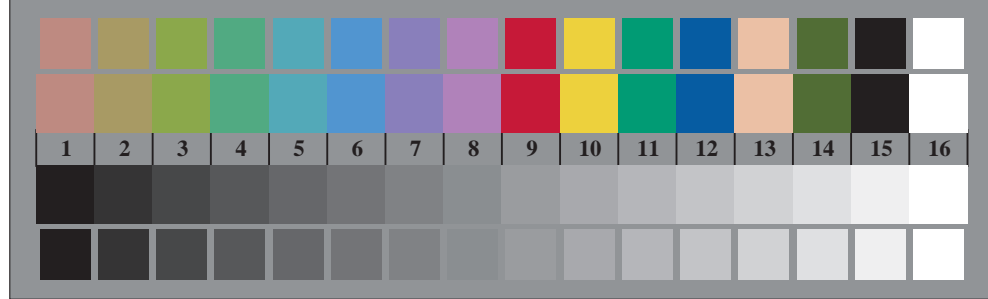


TN930-3, Picture B1Wd: and 2 + 16 grey steps (sf); PS operator 4 colorimage

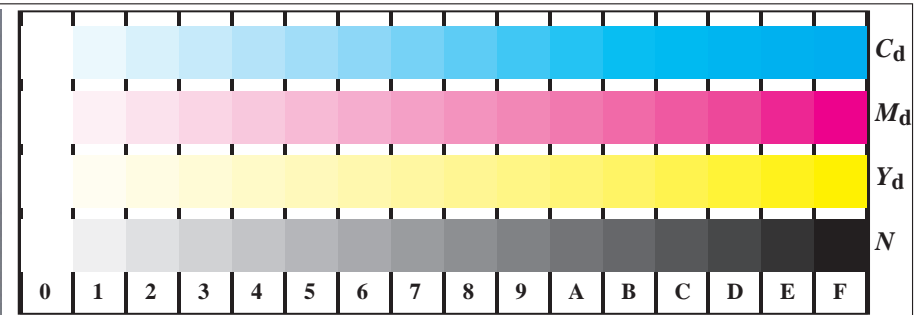


radielt gitter $W-C_d$ radielt gitter $W-M_d$ radielt gitter $W-Y_d$ radielt gitter $W-N$ radielt gitter $W-Z$

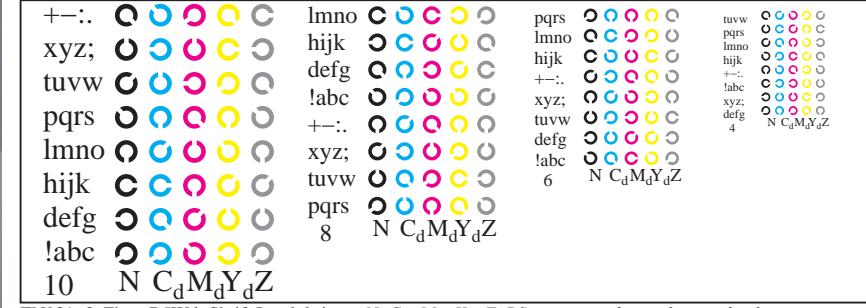
TN930-5, Figur B2Wd: radielt gitter $W-C_d$; $W-M_d$; $W-Y_d$; $W-N$; PS operator $rgb \rightarrow rgb_d$ setrgbcolor



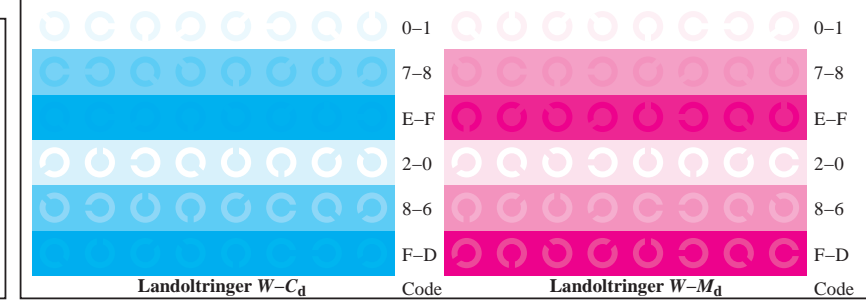
TN930-7, Figur B3Wd: 14 CIE-prøvefarger og 2 + 16 gråtrinn (sf); $rgb/cmy0 \rightarrow rgb_d$ setrgbcolor



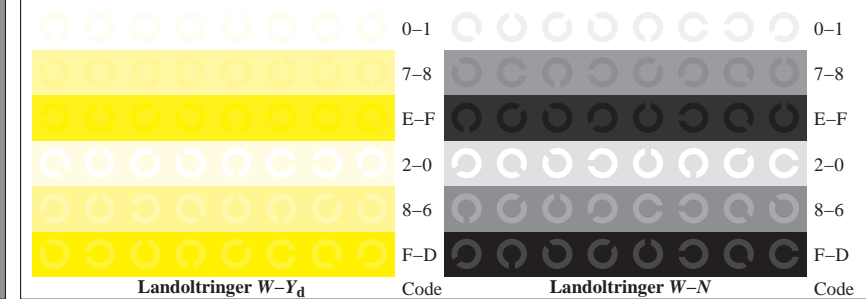
TN931-1, Figur B4Wd: 16 ekvidistante trinn $W-C_d$; $W-M_d$; $W-Y_d$; $W-N$; $rgb/cmy0 \rightarrow rgb_d$ setrgbcolor



TN931-3, Figur B5Wd: Skrift Landoltringer N ; C_d ; M_d ; Y_d ; Z ; PS operator $rgb \rightarrow rgb_d$ setrgbcolor



TN931-5, Figur B6Wd: Landoltringer $W-C_d$; $W-M_d$; PS operator $rgb \rightarrow rgb_d$ setrgbcolor



TN931-7, Figur B7Wd: Landoltringer $W-Y_d$; $W-N$; PS operator $rgb \rightarrow rgb_d$ setrgbcolor