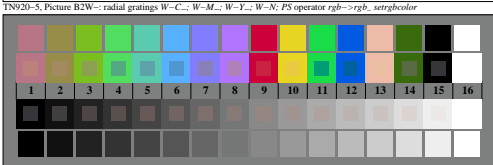
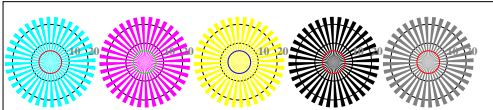
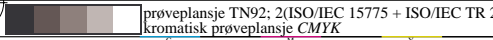


http://130.149.60.45/~farbmetrik/TN92/TN92L0N1.TXT /PS; start output
N: ingen 3D-linearisering (OL) i fil (F) eller PS-startup (S), side 1/1

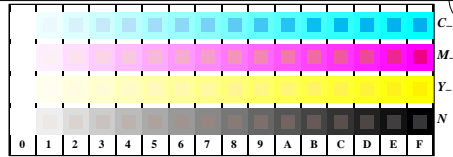
se liggende filer: http://130.149.60.45/~farbmetrik/TN92/TN92.HTM
teknisk informasjon: http://www.ps.bam.de eller http://130.149.60.45/~farbmetrik



TN920-5, Picture B2W-: radial gratings W-C.; W-M.; W-Y.; W-N.; PS operator rgb->rgb_setrgbcolor



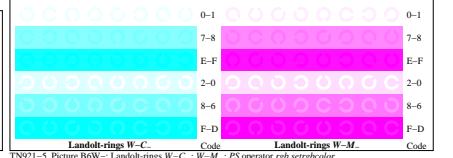
prøveplasje TN92; 2(ISO/IEC 15775 + ISO/IEC TR 24705)
kromatisk prøveplasje CMYK



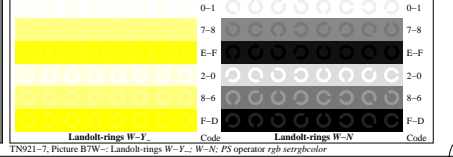
TN921-1, Picture B4W-: 16 equidistant steps W-C.; W-M.; W-Y.; W-N.; rgb/cmy0 set/rgb/cmyk/color



TN921-3, Picture B5W-: Script Landolt-rings N; C.; M.; Y.; Z; PS operator rgb->rgb_setrgbcolor



TN921-5, Picture B6W-: Landolt-rings W-C.; W-M.; PS operator rgb setrgbcolor



TN921-7, Picture B7W-: Landolt-rings W-Y.; W-N.; PS operator rgb setrgbcolor

input: rgb/cmyk -> w/rgb/cmyk_
output: ingen endring

TUB registrering: 20150701-TN92/TN92L0N1.TXT /PS
anvendelse for måling av display output

TUB-material: code=matata

