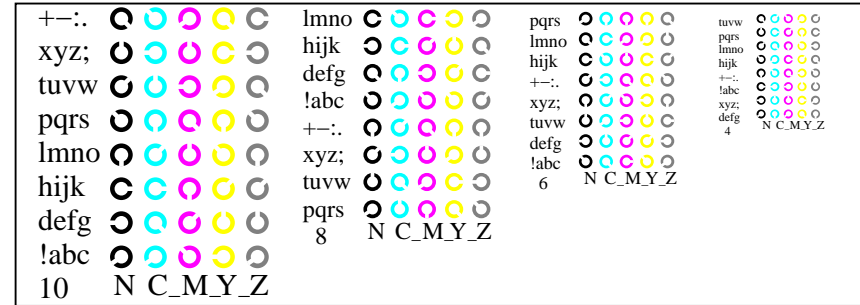
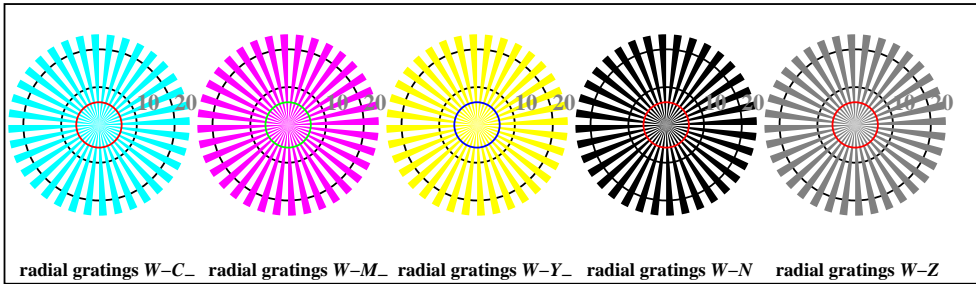


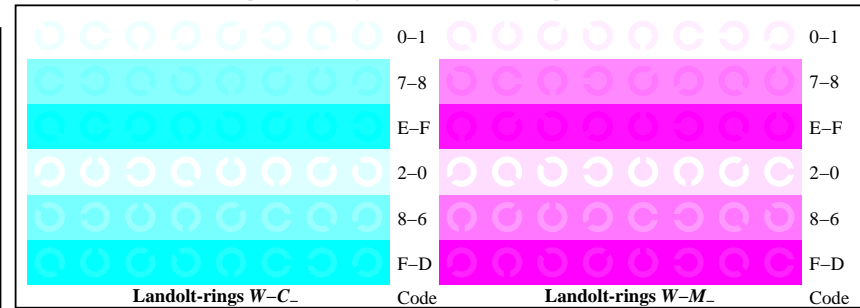
TN921-1, Picture B4W-: 16 equidistant steps W-C; W-M; W-Y; W-N; *rgb/cmy0 set(rgb/cmyk)color*



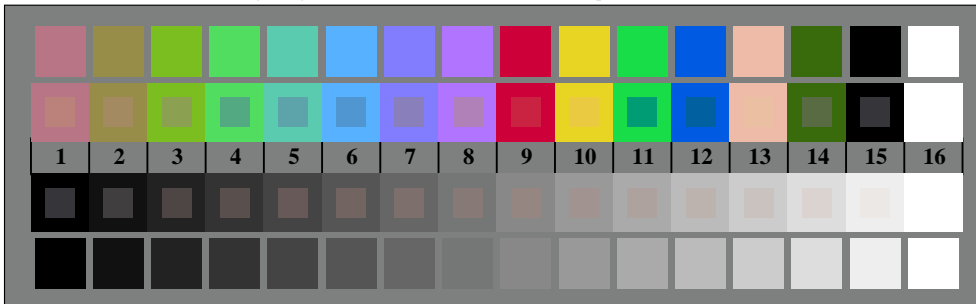
TN921-3, Picture B5W-: Script Landolt-rings N; C; M; Y; Z; *PS operator rgb->rgb_setrgbcolor*



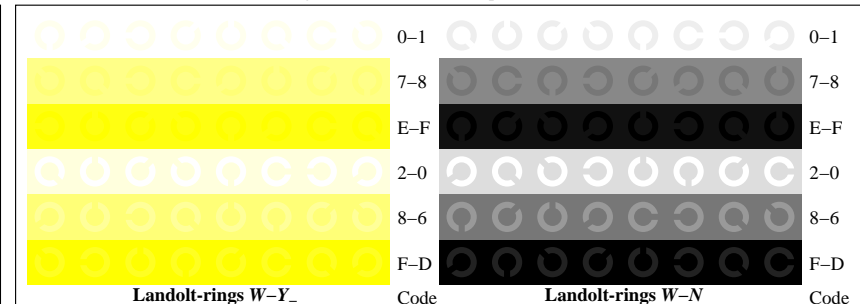
TN920-5, Picture B2W-: radial gratings W-C; W-M; W-Y; W-N; *PS operator rgb->rgb_setrgbcolor*



TN921-5, Picture B6W-: Landolt-rings W-C; W-M; *PS operator rgb_setrgbcolor*



TN920-7, Picture B3W-: 14 CIE-test colours and 2 + 16 grey steps (sf); *rgb/cmy0 set(rgb/cmyk)color*



TN921-7, Picture B7W-: Landolt-rings W-Y; W-N; *PS operator rgb_setrgbcolor*