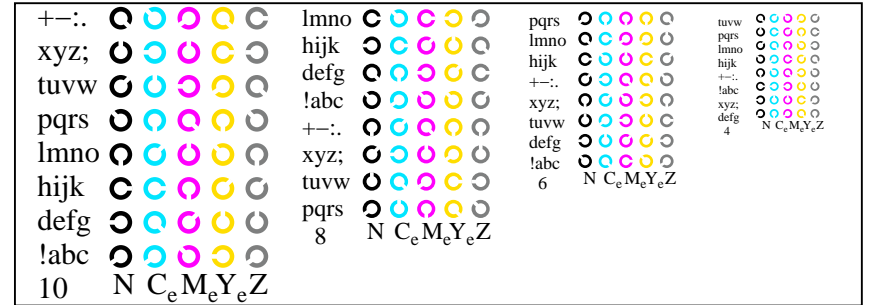
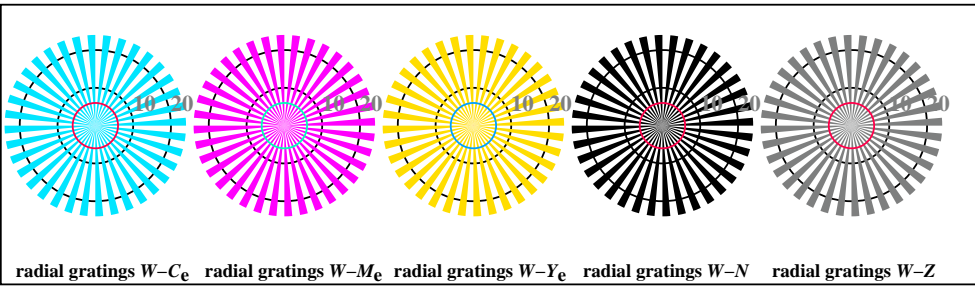


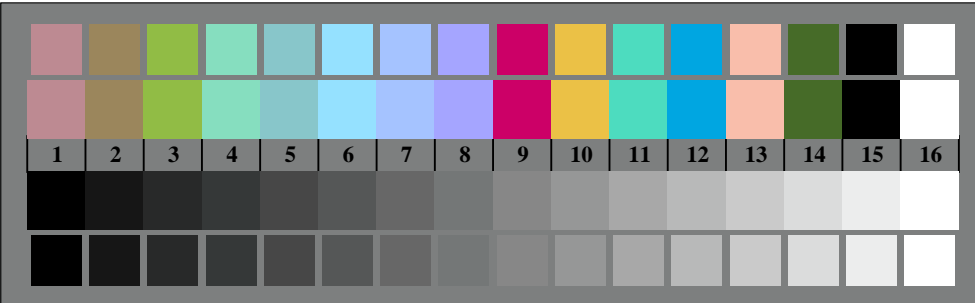
TN921-1, Picture B4Wde: 16 equidistant steps  $W-C_e$ ;  $W-M_e$ ;  $W-Y_e$ ;  $W-N$ ;  $rgb/cmy0 \rightarrow rgbd_e$  setrgbcolor



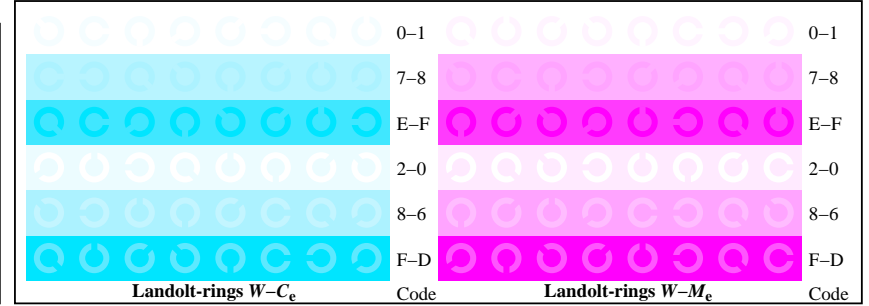
TN921-3, Picture B5Wde: Script Landolt-rings  $N$ ;  $C_e$ ;  $M_e$ ;  $Y_e$ ;  $Z$ ; PS operator  $rgb \rightarrow rgbd_e$  setrgbcolor



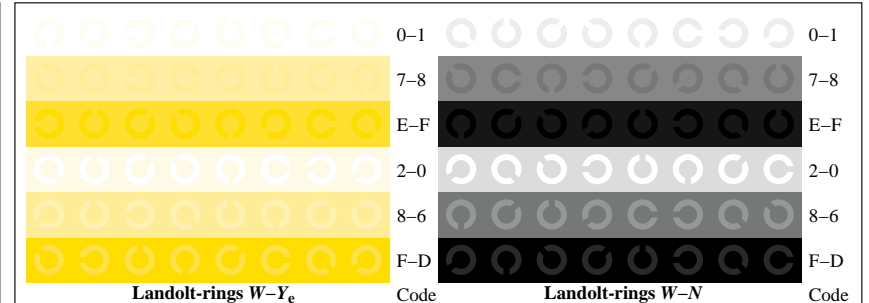
TN920-5, Picture B2Wde: radial gratings  $W-C_e$ ;  $W-M_e$ ;  $W-Y_e$ ;  $W-N$ ; PS operator  $rgb \rightarrow rgbd_e$  setrgbcolor



TN920-7, Picture B3Wde: 14 CIE-test colours and 2 + 16 grey steps (sD);  $rgb/cmy0 \rightarrow rgbd_e$  setrgbcolor



TN921-5, Picture B6Wde: Landolt-rings  $W-C_e$ ;  $W-M_e$ ; PS operator  $rgb \rightarrow rgbd_e$  setrgbcolor



TN921-7, Picture B7Wde: Landolt-rings  $W-Y_e$ ;  $W-N$ ; PS operator  $rgb \rightarrow rgbd_e$  setrgbcolor