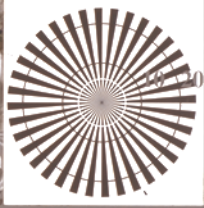


http://130.149.60.45/~farbmetrik/TN86/TN86L0FP.PDF /.PS; 3D-linearisering
F: 3D-linearisering TN86/TN86LJ30FP.DAT i fil (F), side 2/2

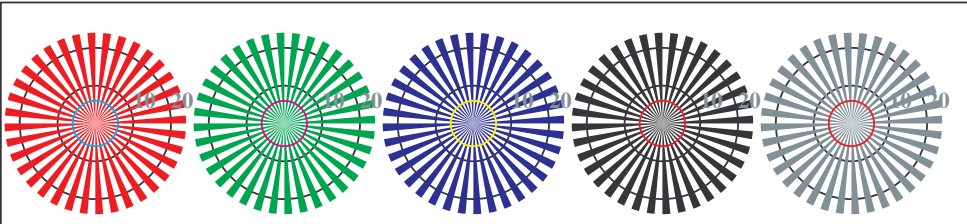
se lignende filer: http://130.149.60.45/~farbmetrik/TN86/TN86L0FP.PDF /.PS
teknisk informasjon: http://www.ps.bam.de eller http://130.149.60.45/~farbmetrik

TUB registrering: 20150701-TN86/TN86L0FP.PDF /.PS
anvendelse for måling av offsetrykk output, separasjoncmy0* (CMY0)

TUB-material: code=rh4ta

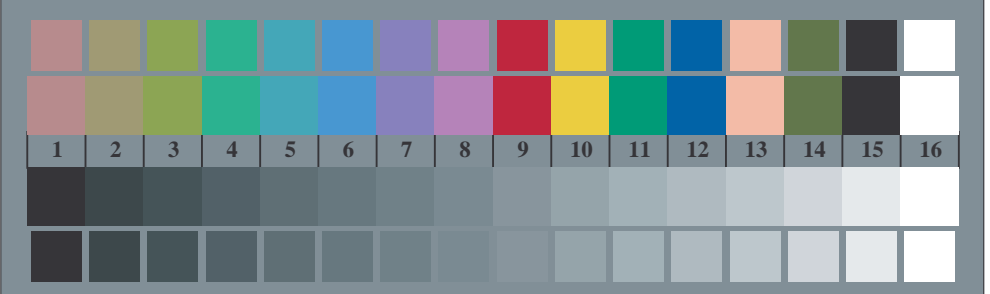


TN860-3, Picture D1Wdd: and 2 + 16 grey steps (sf); ; PS operator: 4 colorimage

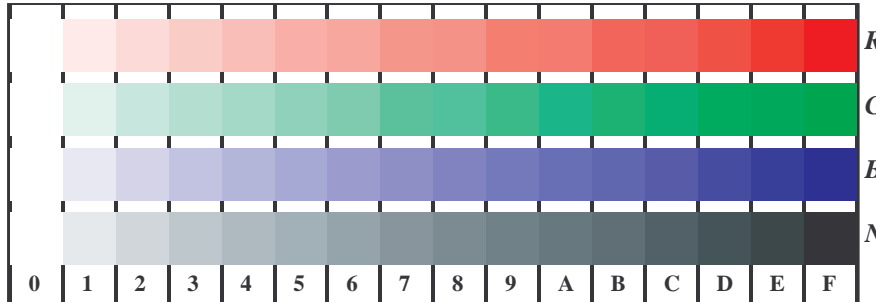


radial gratings W-Rd radial gratings W-Gd radial gratings W-Bd radial gratings W-N radial gratings W-Z

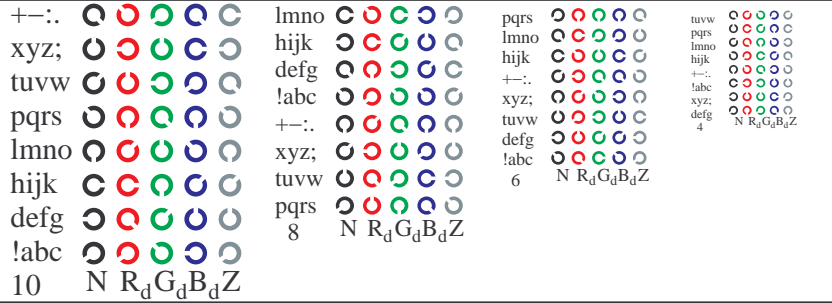
TN860-5, Picture D2Wdd: radial gratings W-Rd; W-Gd; W-Bd; W-N; PS operator: rgb->rgbdd setrgbcolor



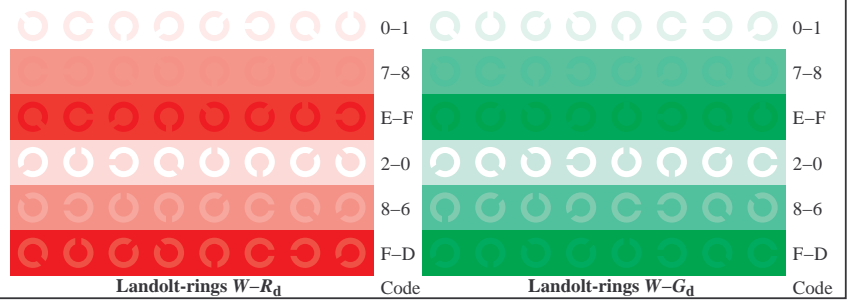
TN860-7, Picture D3Wdd: 14 CIE-test colours and 2 + 16 grey steps (sf); PS operator:rgb/cmy0->rgbdd setrgbcolor



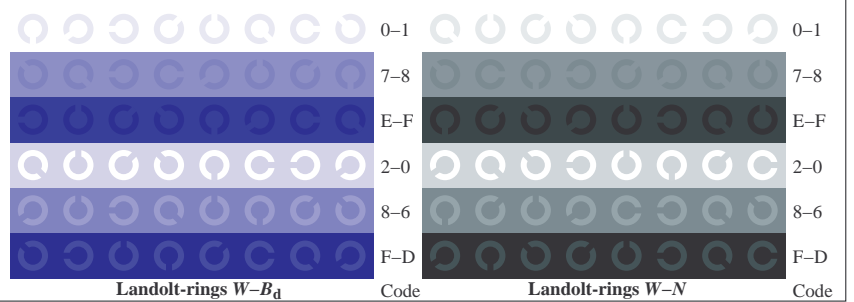
TN861-1, Picture D4Wdd: 16 equidistant steps W-Rd; W-Gd; W-Bd; W-N; rgb/cmy0->rgbdd setrgbcolor



TN861-3, Picture D5Wdd: Script Landolt-rings N; Rd; Gd; Bd; Z; PS operator: rgb->rgbdd setrgbcolor



TN861-5, Picture D6Wdd: Landolt-rings W-Rd; W-Gd; PS operator:rgb->rgbdd setrgbcolor



TN861-7, Picture D7Wdd: Landolt-rings W-Bd; W-N; PS operator:rgb->rgbdd setrgbcolor

prøveplansje TN86; 4(ISO/IEC 15775 + ISO/IEC TR 24705)input: rgb/cmyk -> rgbdd
kromatisk prøveplansje RGB, 3D=1, de=0, cmy0*
output: 3D-linearisering til cmy0*dd