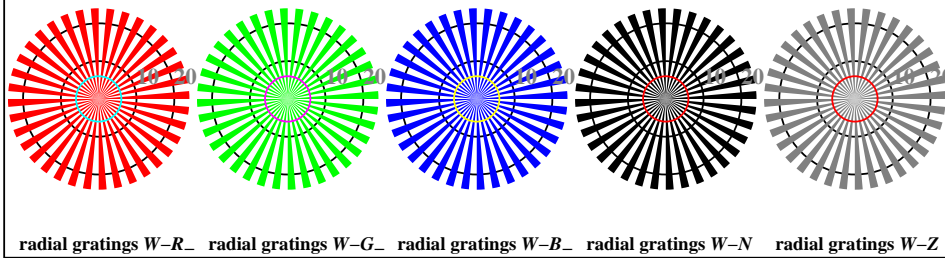
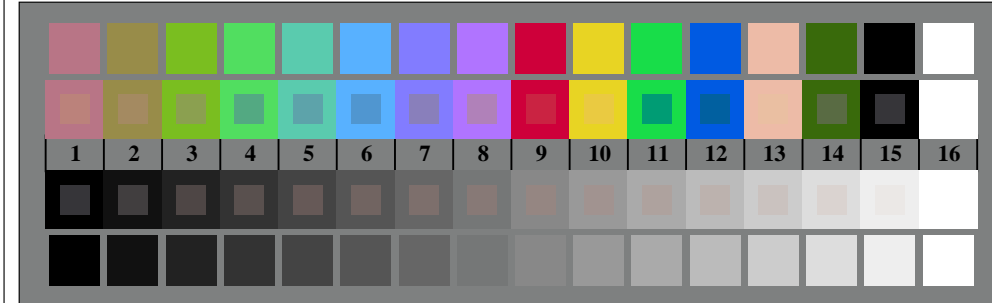




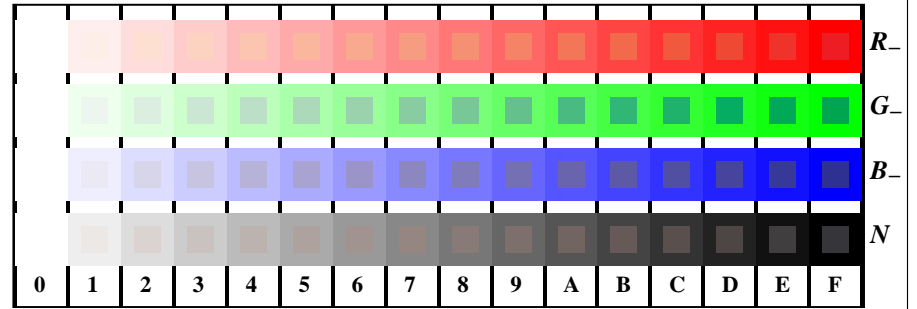
TN860-3, Picture D1W-: and 2 + 16 grey steps (sf); ; PS operator: 4 colorimage



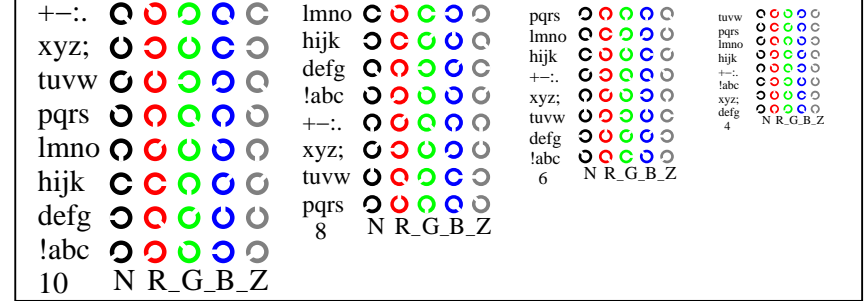
radial gratings W-R\_ radial gratings W-G\_ radial gratings W-B\_ radial gratings W-N radial gratings W-Z



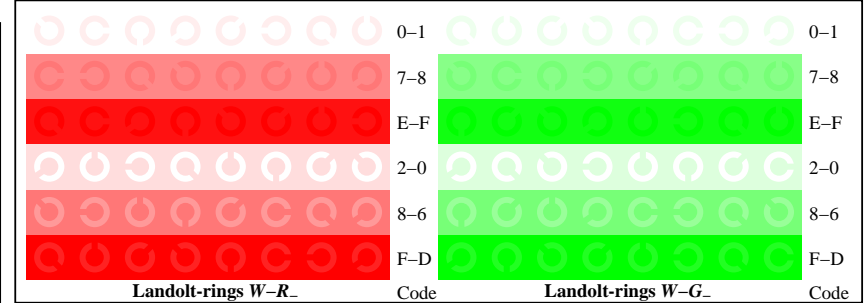
TN860-7, Picture D3W-: 14 CIE-test colours and 2 + 16 grey steps (sf); PS operator:rgb/cmy0 set(rgb/cmyk)color



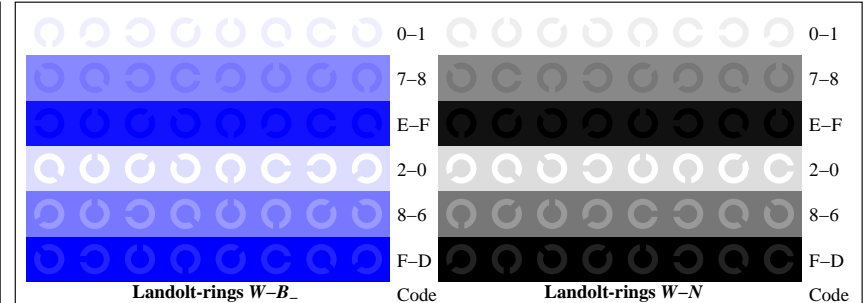
TN861-1, Picture D4W-: 16 equidistant steps W-R\_; W-G\_; W-B\_; W-N; rgb/cmy0 set(rgb/cmyk)color



TN861-3, Picture D5W-: Script Landolt-rings N; R\_; G\_; B\_; Z; PS operator: rgb->rgb\_setrgbcolor



TN861-5, Picture D6W-: Landolt-rings W-R\_; W-G\_; PS operator:rgb\_setrgbcolor



TN861-7, Picture D7W-: Landolt-rings W-B\_; W-N; PS operator:rgb\_setrgbcolor