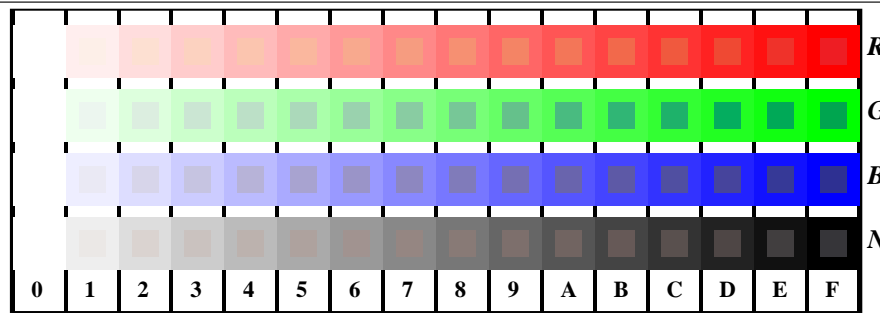


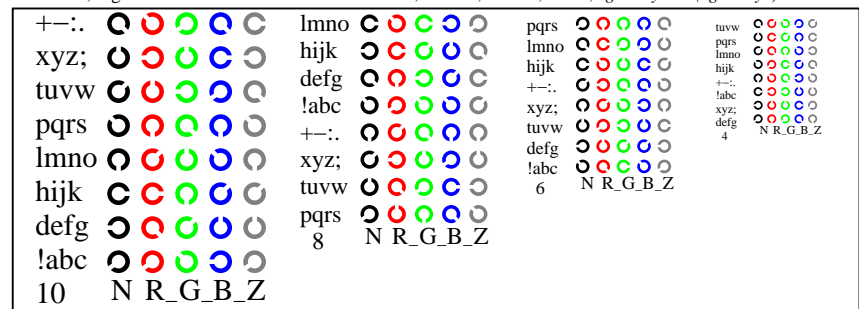
se lignende filer: <http://130.149.60.45/~farbmetrik/TN85/TN85.HTM>
teknisk informasjon: <http://www.ps.bam.de> eller <http://130.149.60.45/~farbmetrik>

TUB registrering: 20150701-TN85/TN85L0NP.PDF /.PS
anvendelse for måling av offsettrykk output

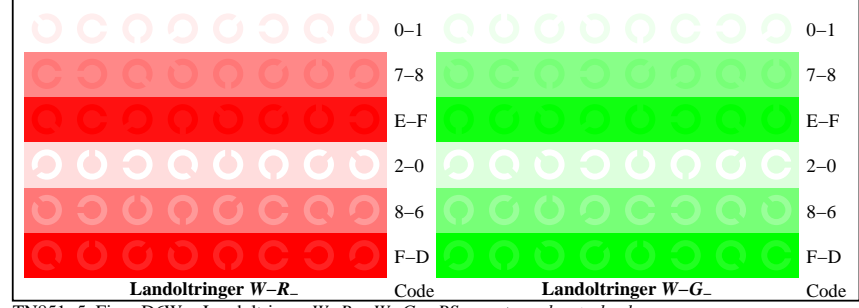
TUB-material: code=rh4ta



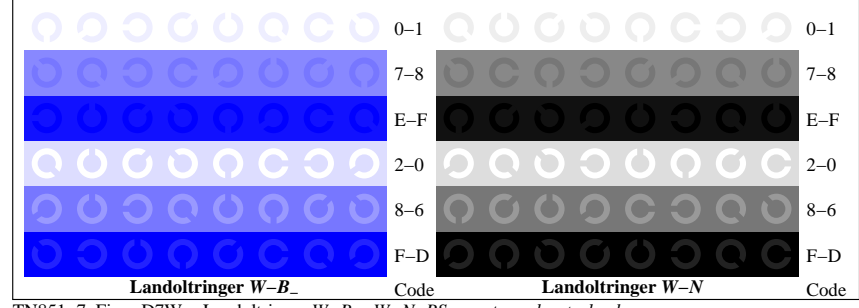
TN851-1, Figur D4W-: 16 ekvidistante trinn W-R_; W-G_; W-B_; W-N; rgb/cmyk0 set(rgb/cmyk)color



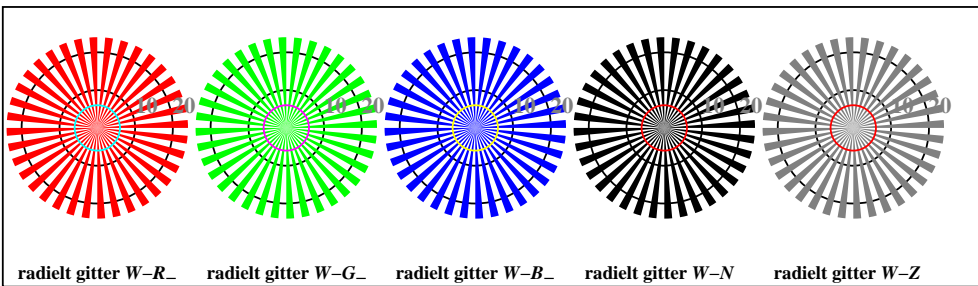
TN851-3, Figur D5W-: Skrift Landoltringer N; R_; G_; B_; Z; PS operator rgb->rgb_setrgbcolor



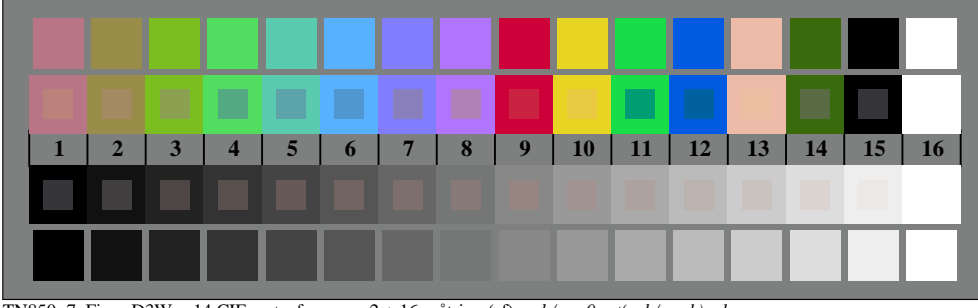
TN851-5, Figur D6W-: Landoltringer W-R_; W-G_; PS operator rgb_setrgbcolor



TN851-7, Figur D7W-: Landoltringer W-B_; W-N; PS operator rgb_setrgbcolor



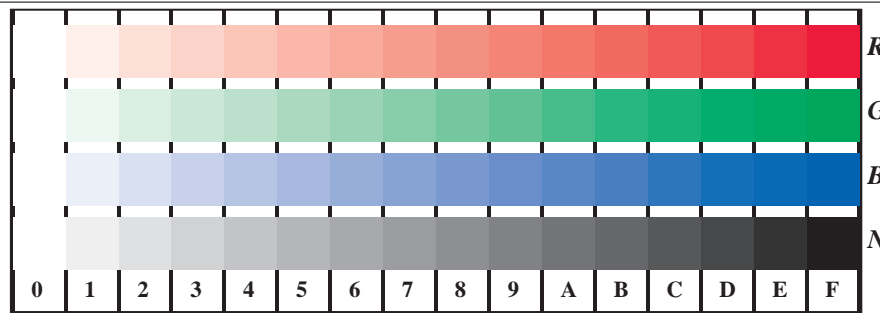
TN850-5, Figur D2W-: radielt gitter W-R_; W-G_; W-B_; W-N; PS operator rgb->rgb_setrgbcolor



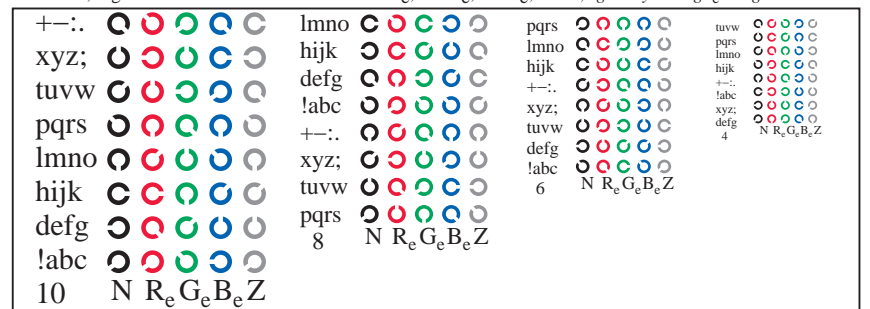
TN850-7, Figur D3W-: 14 CIE-prøvefarger og 2 + 16 gråtrinn (sf); rgb/cmyk0 set(rgb/cmyk)color

se lignende filer: <http://130.149.60.45/~farbmetrik/TN85/TN85.HTM>
teknisk informasjon: <http://www.ps.bam.de> eller <http://130.149.60.45/~farbmetrik>

TUB registrering: 20150701-TN85/TN85L0NP.PDF /.PS
anvendelse for måling av offsettrykk output, separasjoncmyn6 (CMYK)
TUB-material: code=rh4ta

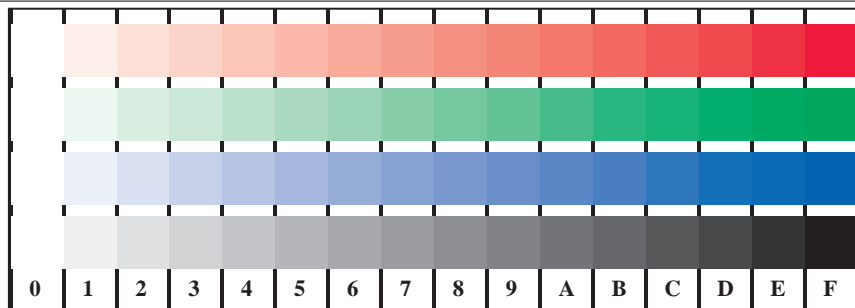


TN851-1, Figur D4We: 16 ekvidistante trinn W-Re; W-Ge; W-Be; W-N; rgb/cmy0->rgb_e setrgbcolor

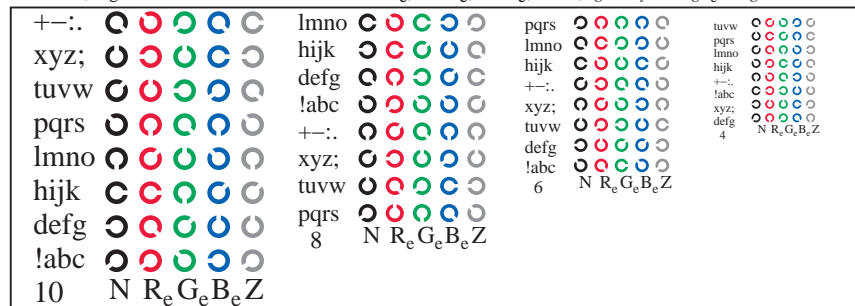


se lignende filer: <http://130.149.60.45/~farbmetrik/TN85/TN85.HTM>
 teknisk informasjon: <http://www.ps.bam.de> eller <http://130.149.60.45/~farbmetrik>

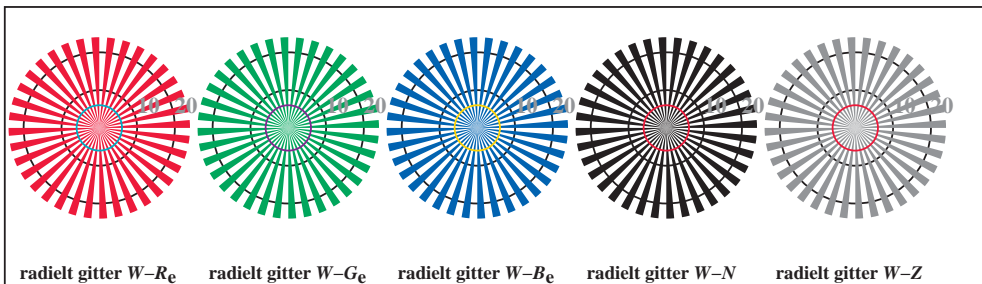
TUB registrering: 20150701-TN85/TN85L0NP.PDF /.PS TUB-material: code=rh4ta
 anvendelse for måling av offsettrykk output, separasjoncmyn6 (CMYK)



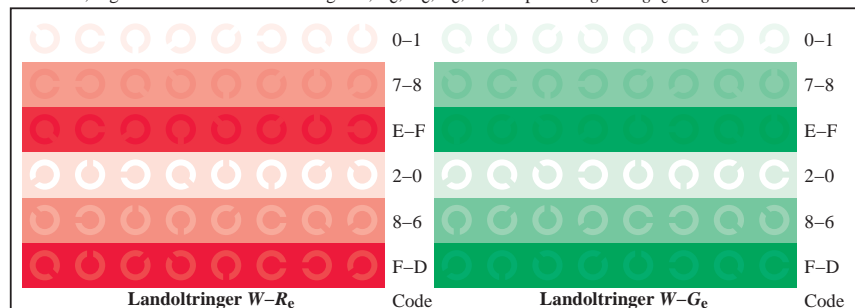
TN851-1, Figur D4We: 16 ekvidistante trinn $W-R_e$; $W-G_e$; $W-B_e$; $W-N$; $rgb/cmy0 \rightarrow rgb_e$ setrgbcolor



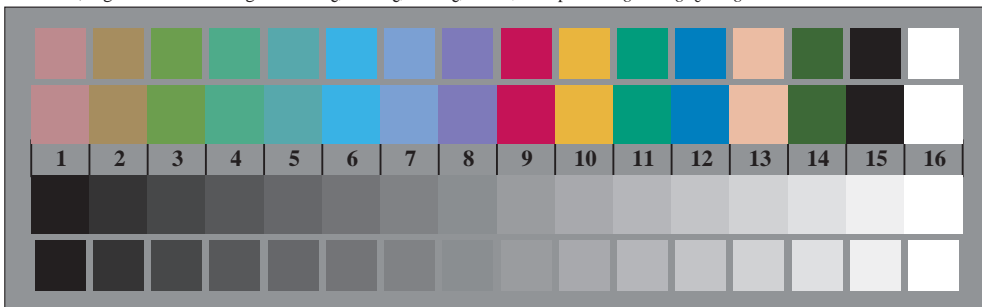
TN851-3, Figur D5We: Skrift Landoltringer N; R_e ; G_e ; B_e ; Z; PS operator $rgb \rightarrow rgb_e$ setrgbcolor



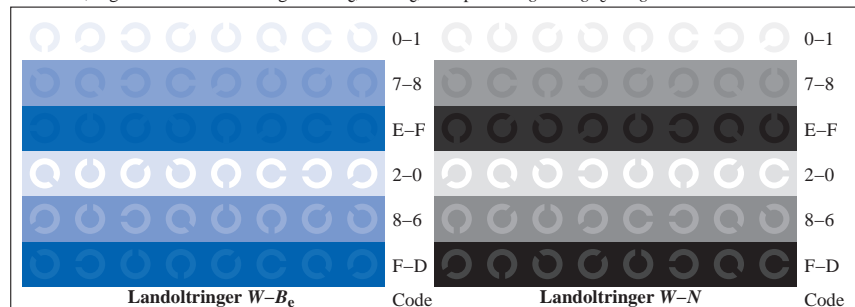
TN850-5, Figur D2We: radielt gitter $W-R_e$; $W-G_e$; $W-B_e$; $W-N$; PS operator $rgb \rightarrow rgb_e$ setrgbcolor



TN851-5, Figur D6We: Landoltringer $W-R_e$; $W-G_e$; PS operator $rgb \rightarrow rgb_e$ setrgbcolor



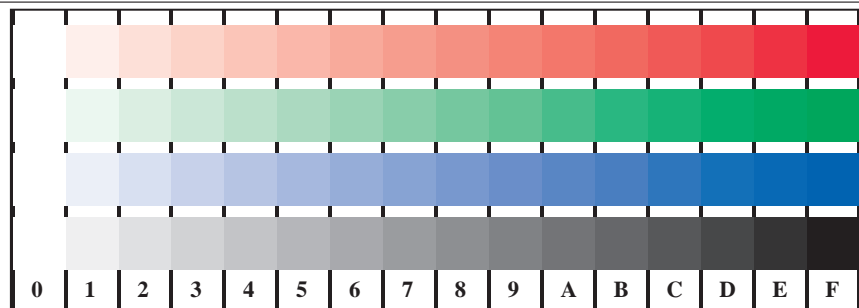
TN850-7, Figur D3We: 14 CIE-prøvefarger og 2 + 16 gråtrinn (sf); $rgb/cmy0 \rightarrow rgb_e$ setrgbcolor



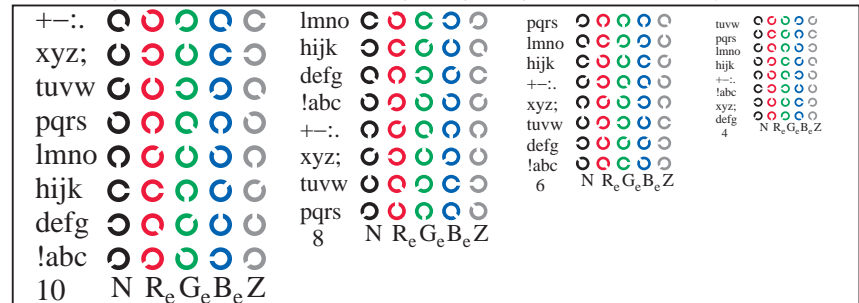
TN851-7, Figur D7We: Landoltringer $W-B_e$; $W-N$; PS operator $rgb \rightarrow rgb_e$ setrgbcolor

se lignende filer: <http://130.149.60.45/~farbmetrik/TN85/TN85.HTM>
 teknisk informasjon: <http://www.ps.bam.de> eller <http://130.149.60.45/~farbmetrik>

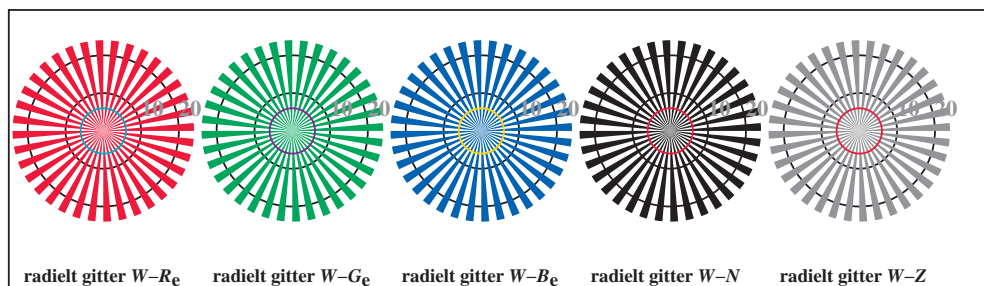
TUB registrering: 20150701-TN85/TN85L0NP.PDF /.PS TUB-material: code=rh4ta
 anvendelse for måling av offsettrykk output, separasjoncmyn6 (CMYK)



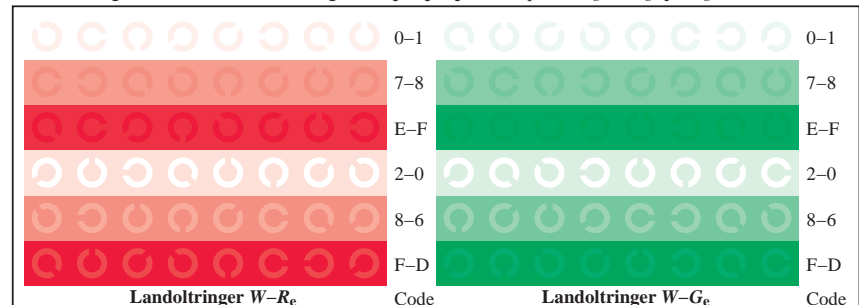
TN851-1, Figur D4We: 16 ekvidistante trinn $W-R_e$; $W-G_e$; $W-B_e$; $W-N$; $rgb/cmy0 \rightarrow rgb_e$ setrgbcolor



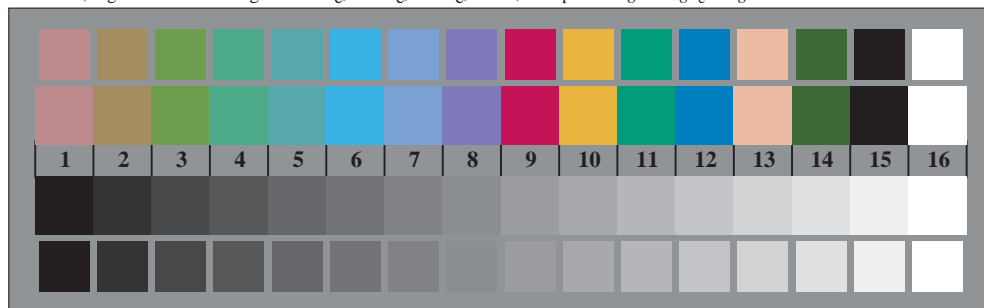
TN851-3, Figur D5We: Skrift Landoltringer N; R_e ; G_e ; B_e ; Z; PS operator $rgb \rightarrow rgb_e$ setrgbcolor



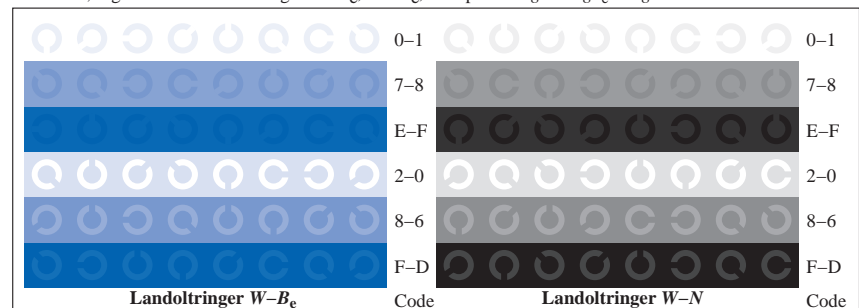
TN850-5, Figur D2We: radielt gitter $W-R_e$; $W-G_e$; $W-B_e$; $W-N$; PS operator $rgb \rightarrow rgb_e$ setrgbcolor



TN851-5, Figur D6We: Landoltringer $W-R_e$; $W-G_e$; PS operator $rgb \rightarrow rgb_e$ setrgbcolor



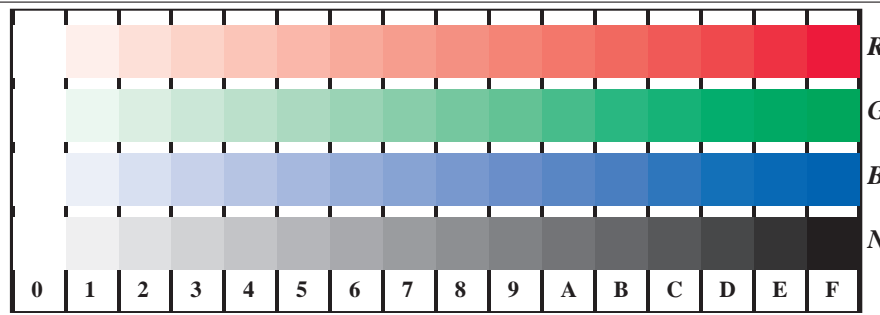
TN850-7, Figur D3We: 14 CIE-prøvefarger og 2 + 16 gråtrinn (sf); $rgb/cmy0 \rightarrow rgb_e$ setrgbcolor



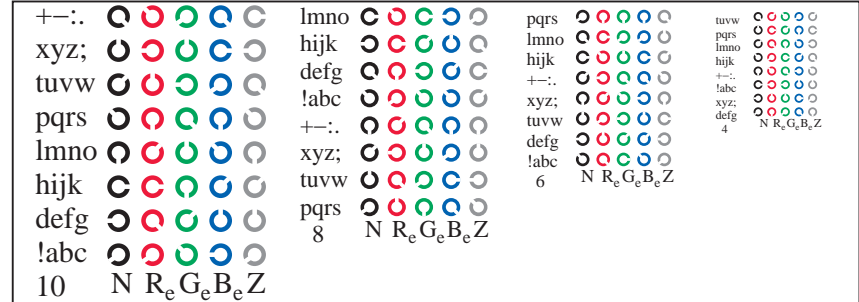
TN851-7, Figur D7We: Landoltringer $W-B_e$; $W-N$; PS operator $rgb \rightarrow rgb_e$ setrgbcolor

se lignende filer: <http://130.149.60.45/~farbmetrik/TN85/TN85.HTM>
 teknisk informasjon: <http://www.ps.bam.de> eller <http://130.149.60.45/~farbmetrik>

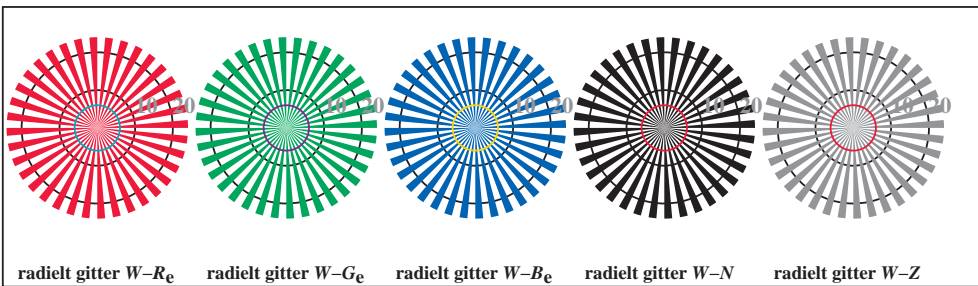
TUB registrering: 20150701-TN85/TN85L0NP.PDF /.PS TUB-material: code=rh4ta
 anvendelse for måling av offsettrykk output, separasjoncmyn6 (CMYK)



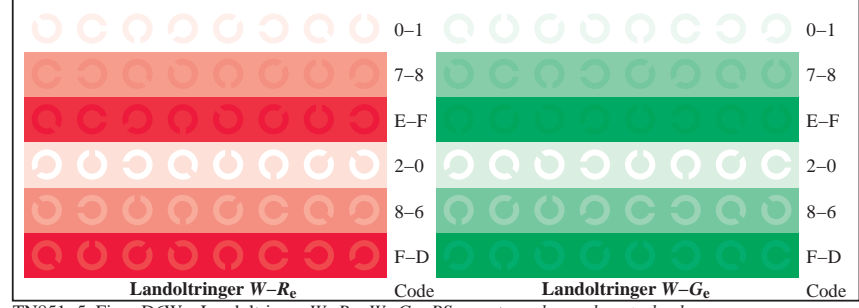
TN851-1, Figur D4We: 16 ekvidistante trinn $W-R_e$; $W-G_e$; $W-B_e$; $W-N$; $rgb/cmy0 \rightarrow rgb_e$ setrgbcolor



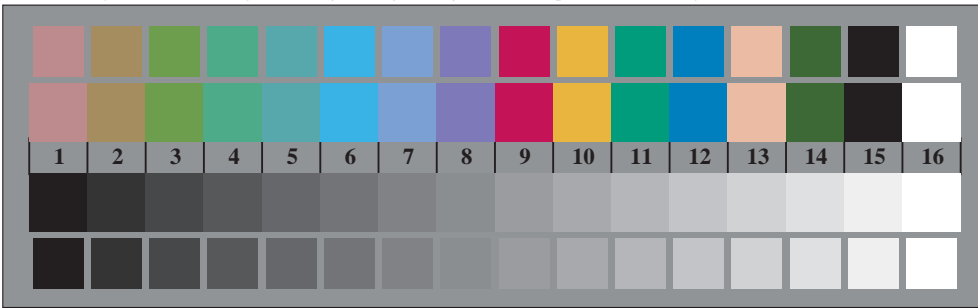
TN851-3, Figur D5We: Skrift Landoltringer N; R_e; G_e; B_e; Z; PS operator $rgb \rightarrow rgb_e$ setrgbcolor



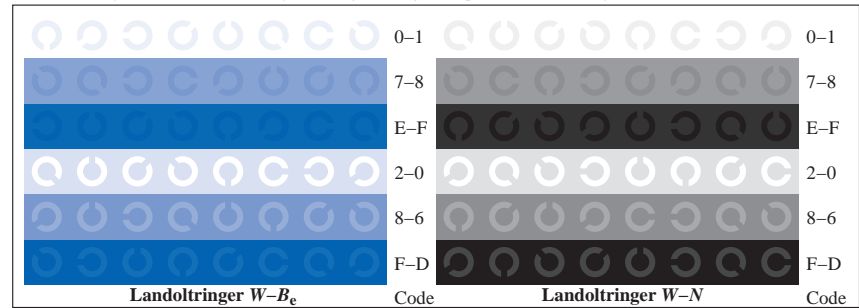
TN850-5, Figur D2We: radielt gitter $W-R_e$; $W-G_e$; $W-B_e$; $W-N$; PS operator $rgb \rightarrow rgb_e$ setrgbcolor



TN851-5, Figur D6We: Landoltringer $W-R_e$; $W-G_e$; PS operator $rgb \rightarrow rgb_e$ setrgbcolor



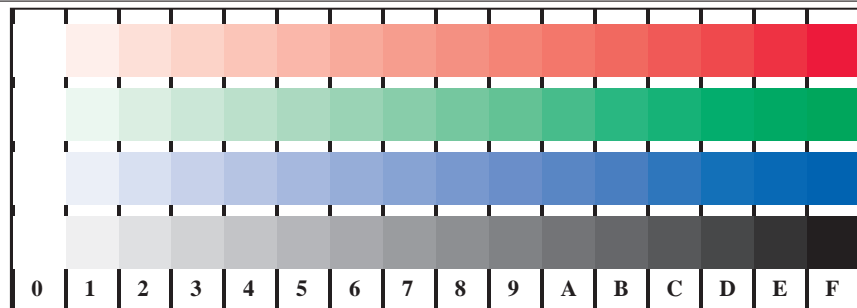
TN850-7, Figur D3We: 14 CIE-prøvefarger og 2 + 16 gråtrinn (sf); $rgb/cmy0 \rightarrow rgb_e$ setrgbcolor



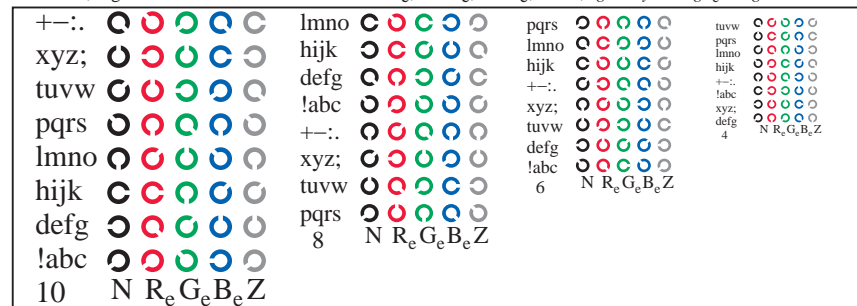
TN851-7, Figur D7We: Landoltringer $W-B_e$; $W-N$; PS operator $rgb \rightarrow rgb_e$ setrgbcolor

se lignende filer: <http://130.149.60.45/~farbmetrik/TN85/TN85.HTM>
 teknisk informasjon: <http://www.ps.bam.de> eller <http://130.149.60.45/~farbmetrik>

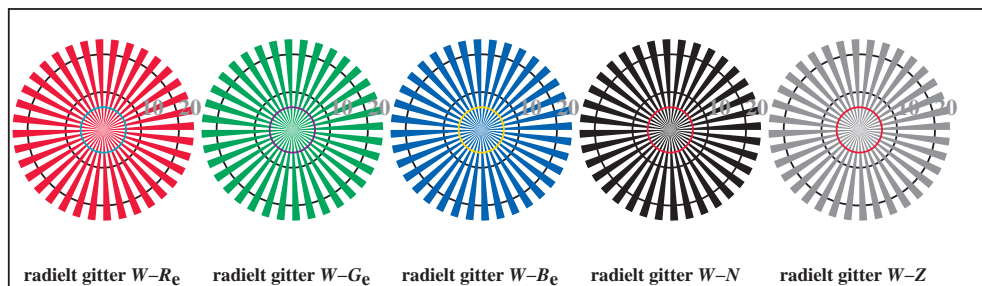
TUB registrering: 20150701-TN85/TN85L0NP.PDF /.PS TUB-material: code=rh4ta
 anvendelse for måling av offsettrykk output, separasjoncmyn6 (CMYK)



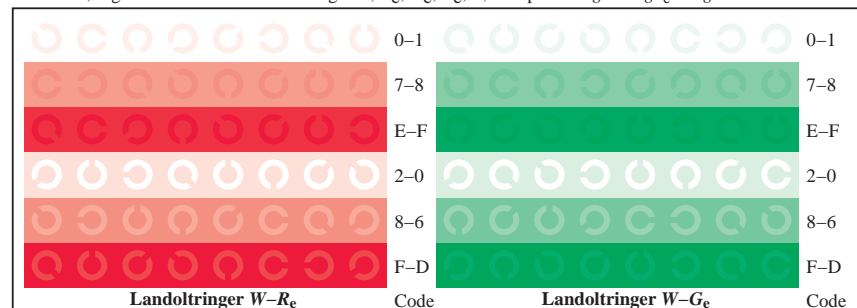
TN851-1, Figur D4We: 16 ekvidistante trinn $W-R_e$; $W-G_e$; $W-B_e$; $W-N$; $rgb/cmy0 \rightarrow rgb_e$ setrgbcolor



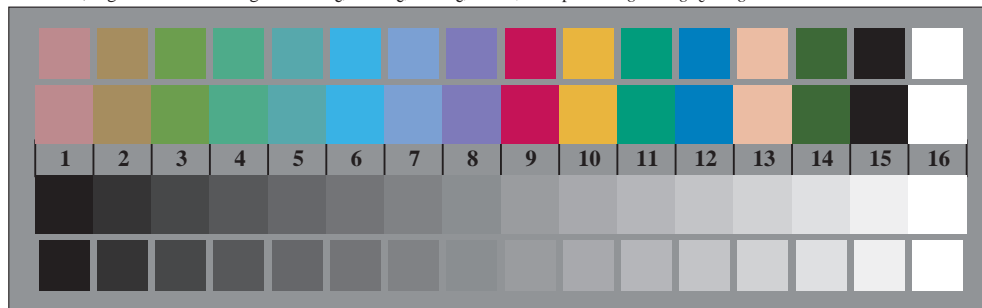
TN851-3, Figur D5We: Skrift Landoltringer N; R_e; G_e; B_e; Z; PS operator $rgb \rightarrow rgb_e$ setrgbcolor



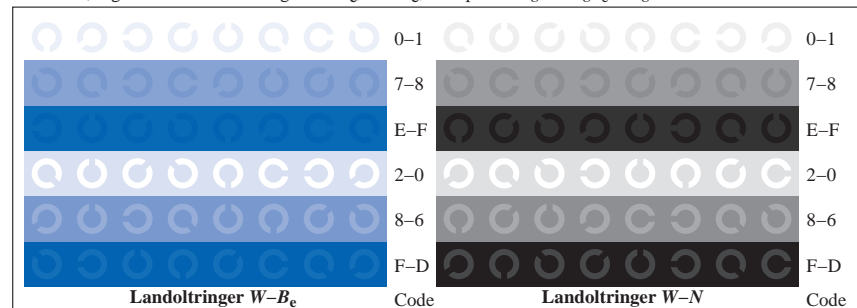
TN850-5, Figur D2We: radielt gitter $W-R_e$; $W-G_e$; $W-B_e$; $W-N$; PS operator $rgb \rightarrow rgb_e$ setrgbcolor



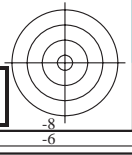
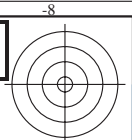
TN851-5, Figur D6We: Landoltringer $W-R_e$; $W-G_e$; PS operator $rgb \rightarrow rgb_e$ setrgbcolor

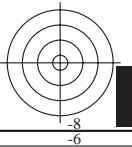
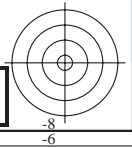
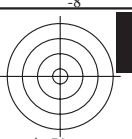
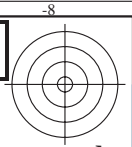


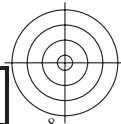
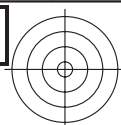
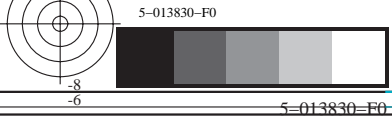
TN850-7, Figur D3We: 14 CIE-prøvefarger og 2 + 16 gråtrinn (sf); $rgb/cmy0 \rightarrow rgb_e$ setrgbcolor

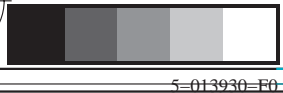
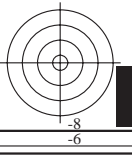
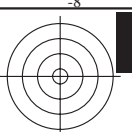
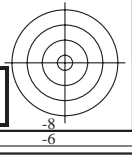
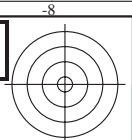


TN851-7, Figur D7We: Landoltringer $W-B_e$; $W-N$; PS operator $rgb \rightarrow rgb_e$ setrgbcolor

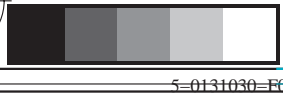
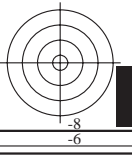
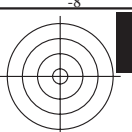
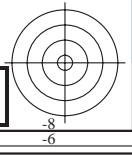
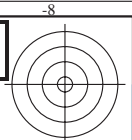




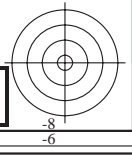
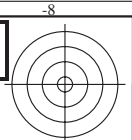


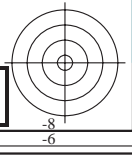
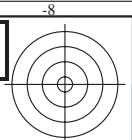


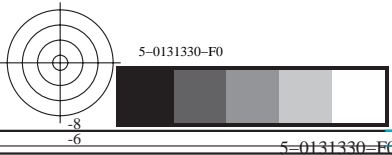
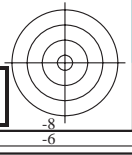
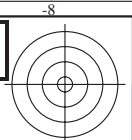
se lignende filer: <http://130.149.60.45/~farbmetrik/TN85/TN85.HTM>
teknisk informasjon: <http://www.ps.bam.de> eller <http://130.149.60.45/~farbmetrik>

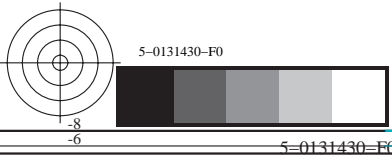
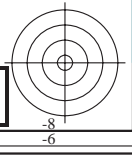
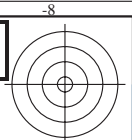


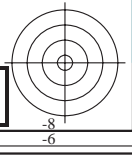
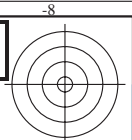
se lignende filer: <http://130.149.60.45/~farbmetrik/TN85/TN85.HTM>
teknisk informasjon: <http://www.ps.bam.de> eller <http://130.149.60.45/~farbmetrik>



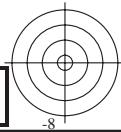
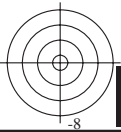
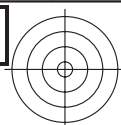
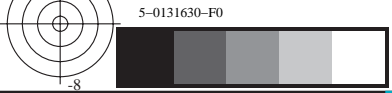


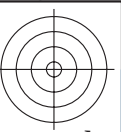
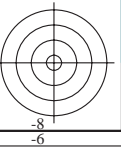
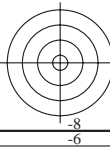
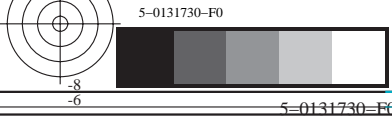


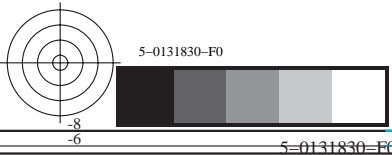
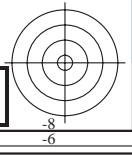
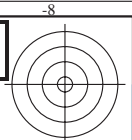




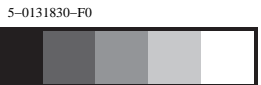
se lignende filer: <http://130.149.60.45/~farbmetrik/TN85/TN85.HTM>
teknisk informasjon: <http://www.ps.bam.de> eller <http://130.149.60.45/~farbmetrik>





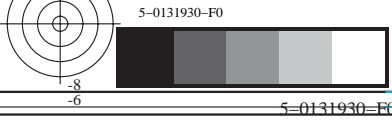


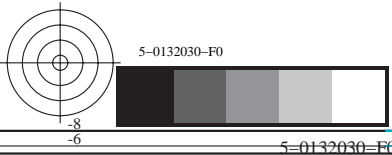
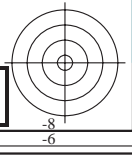
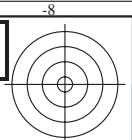
se lignende filer: <http://130.149.60.45/~farbmetrik/TN85/TN85.HTM>
teknisk informasjon: <http://www.ps.bam.de> eller <http://130.149.60.45/~farbmetrik>



5-0131830-F0







se lignende filer: <http://130.149.60.45/~farbmetrik/TN85/TN85.HTM>
teknisk informasjon: <http://www.ps.bam.de> eller <http://130.149.60.45/~farbmetrik>

