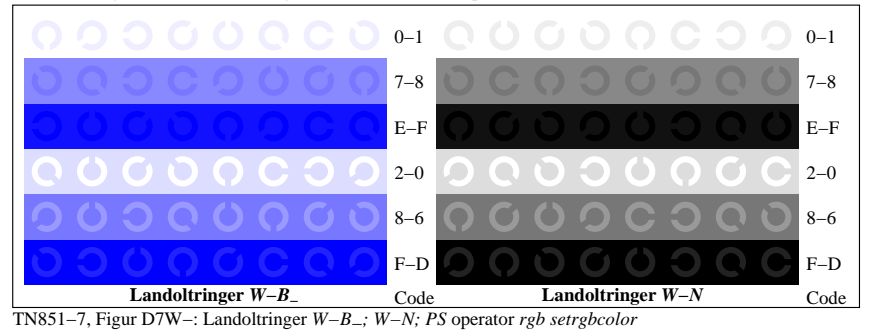
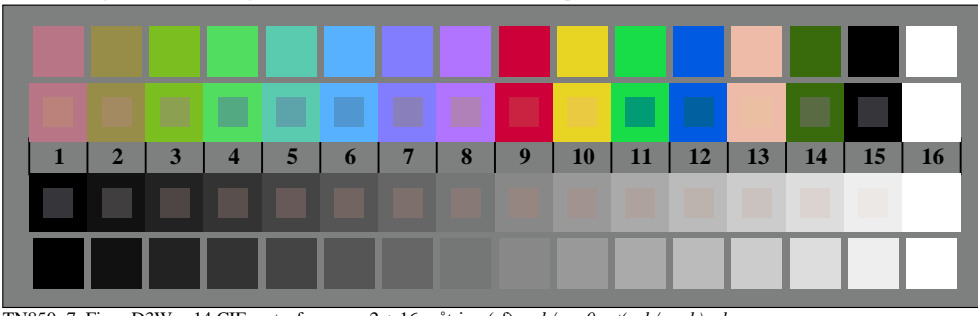
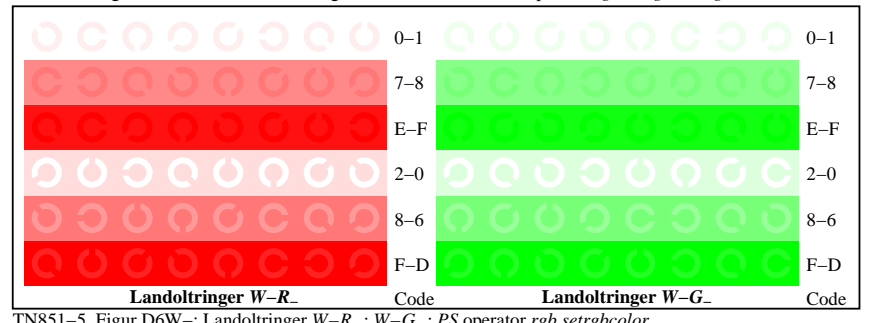
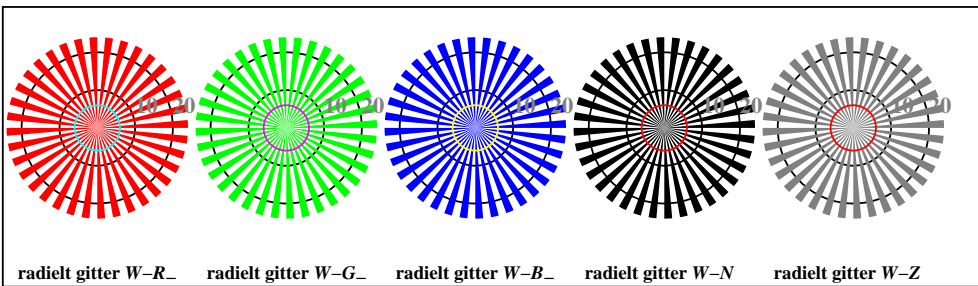
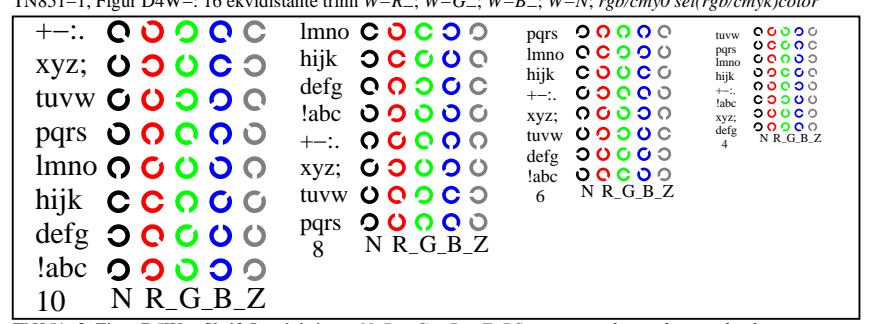
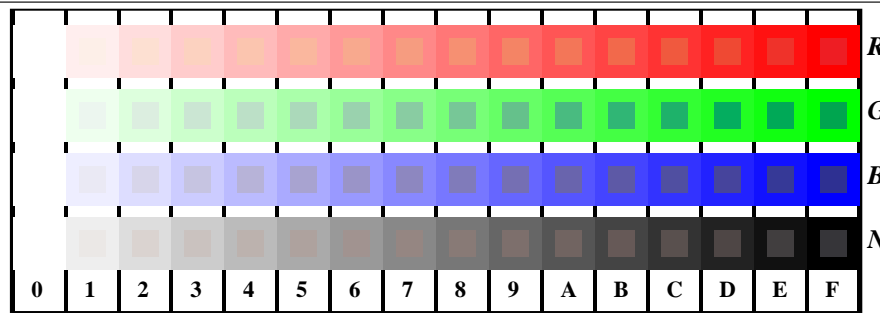


se lignende filer: <http://130.149.60.45/~farbmetrik/TN85/TN85L0FP.PDF> / .PS
teknisk informasjon: <http://www.ps.bam.de> eller <http://130.149.60.45/~farbmetrik>

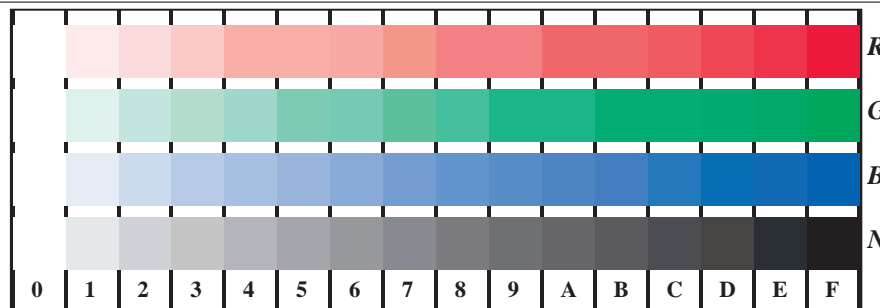
TUB registrering: 20150701-TN85/TN85L0FP.PDF /.PS
anvendelse for måling av offsettrykk output

TUB-material: code=rh4ta

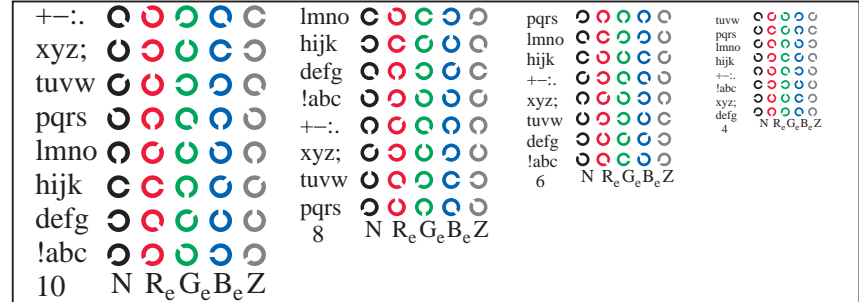


se lignende filer: <http://130.149.60.45/~farbmetrik/TN85/TN85.HTM>
teknisk informasjon: <http://www.ps.bam.de> eller <http://130.149.60.45/~farbmetrik>

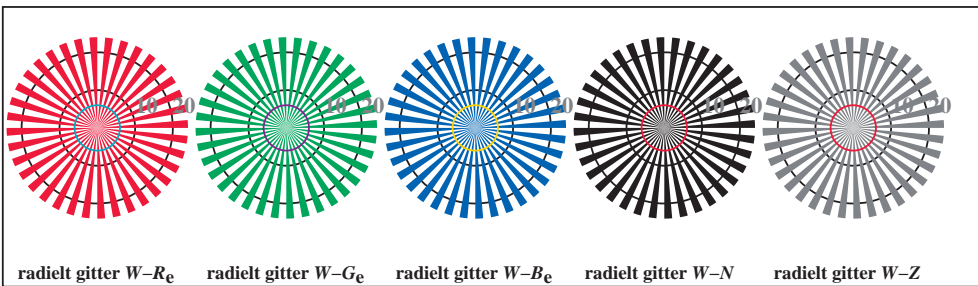
TUB registrering: 20150701-TN85/TN85L0FP.PDF /.PS
anvendelse for måling av offsettrykk output, separasjoncmyn6* (CMYK)
TUB-material: code=rh4ta



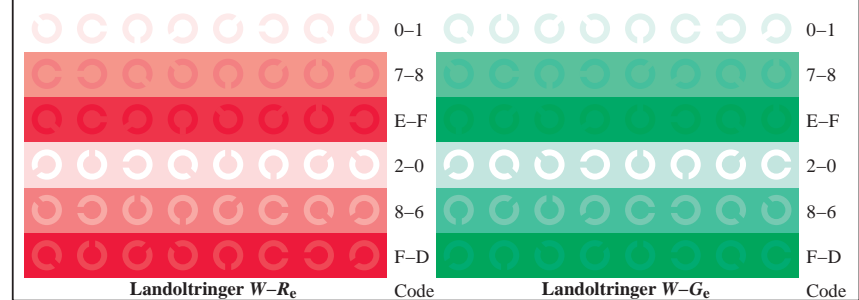
TN851-1, Figur D4Wde: 16 ekvidistante trinn W-Re; W-Ge; W-Be; W-N; rgb/cmy0->rgbde setrgbcolor



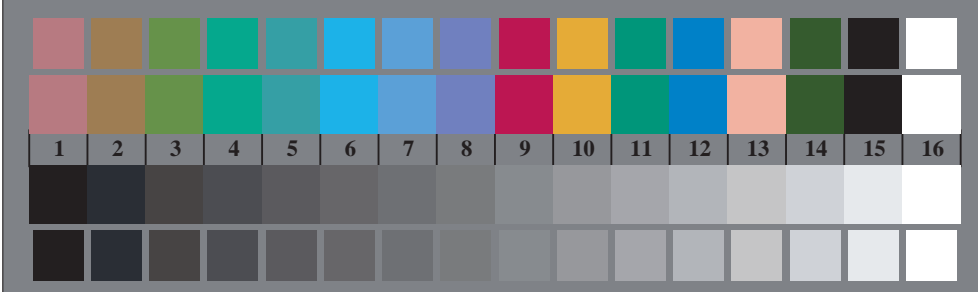
TN851-3, Figur D5Wde: Skrift Landoltringer N; Re; Ge; Be; Z; PS operator rgb->rgbde setrgbcolor



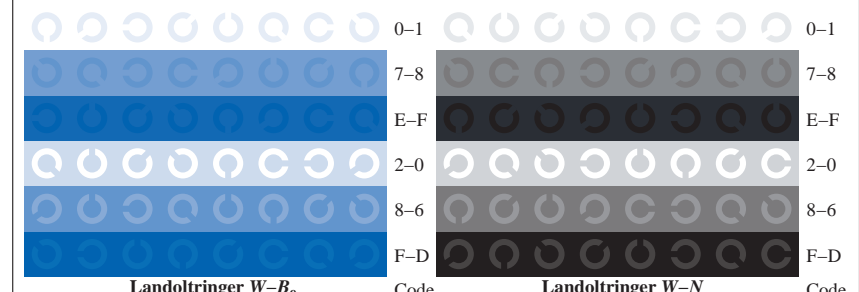
TN850-5, Figur D2Wde: radielt gitter W-Re; W-Ge; W-Be; W-N; PS operator rgb->rgbde setrgbcolor



TN851-5, Figur D6Wde: Landoltringer W-Re; W-Ge; PS operator rgb->rgbde setrgbcolor



TN850-7, Figur D3Wde: 14 CIE-prøvefarger og 2 + 16 gråtrinn (sf); rgb/cmy0->rgbde setrgbcolor

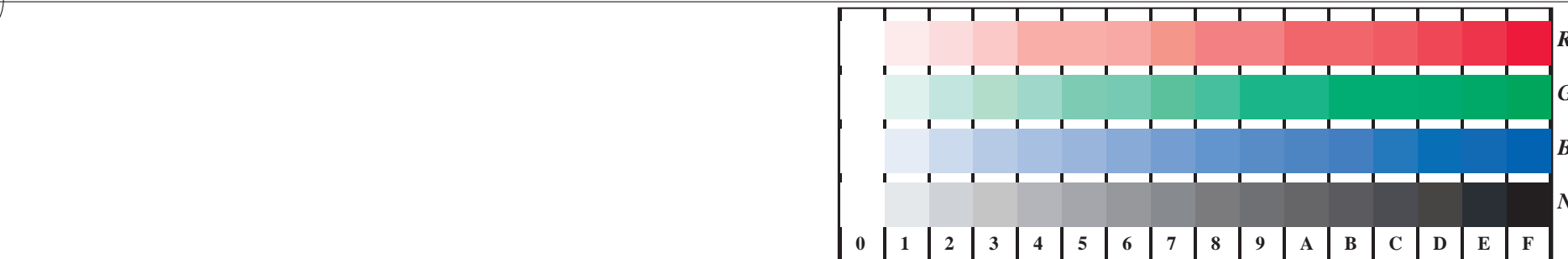


TN851-7, Figur D7Wde: Landoltringer W-Be; W-N; PS operator rgb->rgbde setrgbcolor

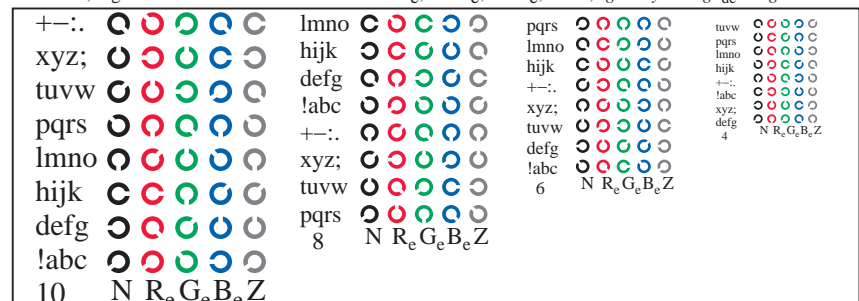


se lignende filer: <http://130.149.60.45/~farbmetrik/TN85/TN85L0FP.PDF> / .PS
 teknisk informasjon: <http://www.ps.bam.de> eller <http://130.149.60.45/~farbmetrik>

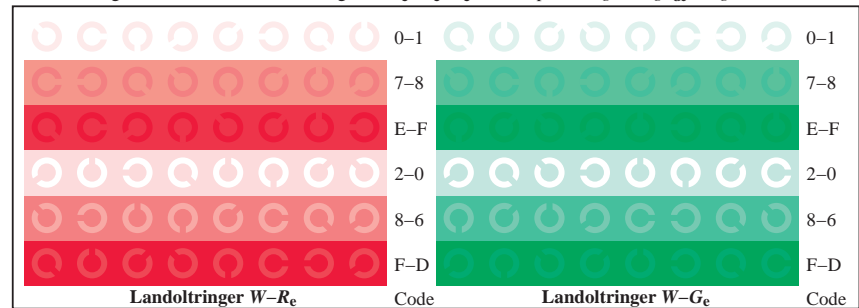
TUB registrering: 20150701-TN85/TN85L0FP.PDF /.PS
 anvendelse for måling av offsettrykk output, separasjoncmyn6* (CMYK)
 TUB-material: code=rh4ta



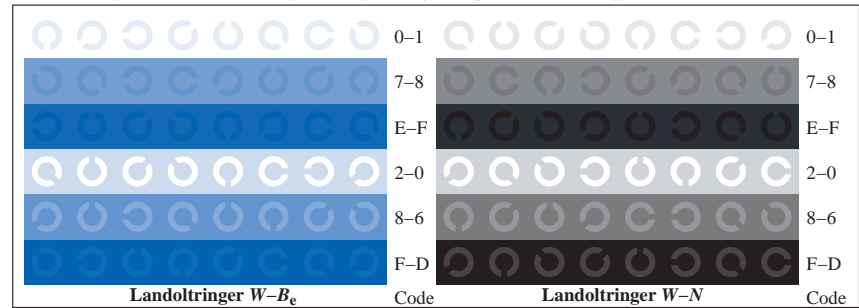
TN851-1, Figur D4Wde: 16 ekvidistante trinn $W-R_e$; $W-G_e$; $W-B_e$; $W-N$; $rgb/cmy0 \rightarrow rgb_{de}$ setrgbcolor



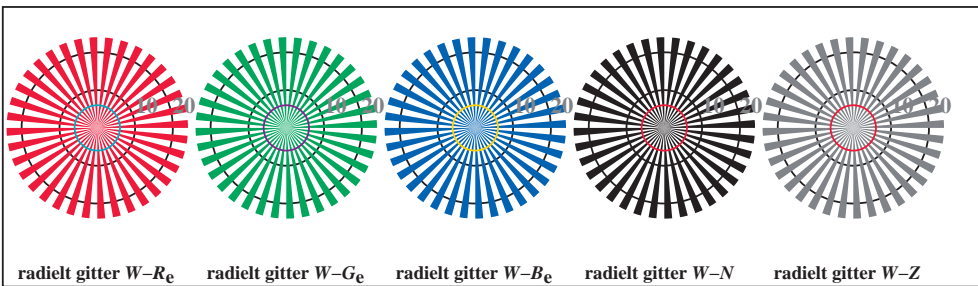
TN851-3, Figur D5Wde: Skrift Landoltringer N; R_e; G_e; B_e; Z; PS operator $rgb \rightarrow rgb_{de}$ setrgbcolor



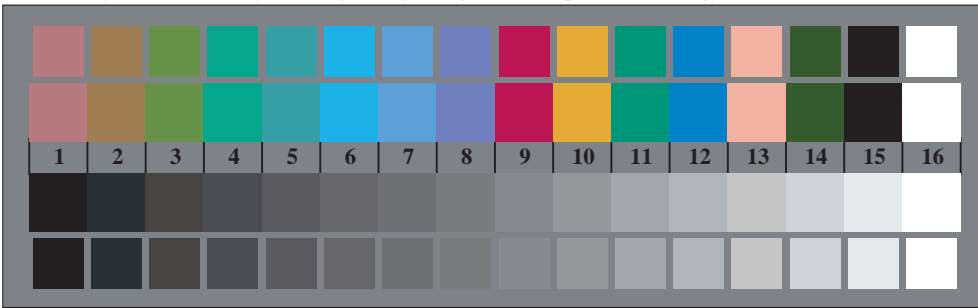
TN851-5, Figur D6Wde: Landoltringer W-R_e; W-G_e; PS operator $rgb \rightarrow rgb_{de}$ setrgbcolor



TN851-7, Figur D7Wde: Landoltringer W-B_e; W-N; PS operator $rgb \rightarrow rgb_{de}$ setrgbcolor



TN850-5, Figur D2Wde: radielt gitter W-R_e; W-G_e; W-B_e; W-N; PS operator $rgb \rightarrow rgb_{de}$ setrgbcolor

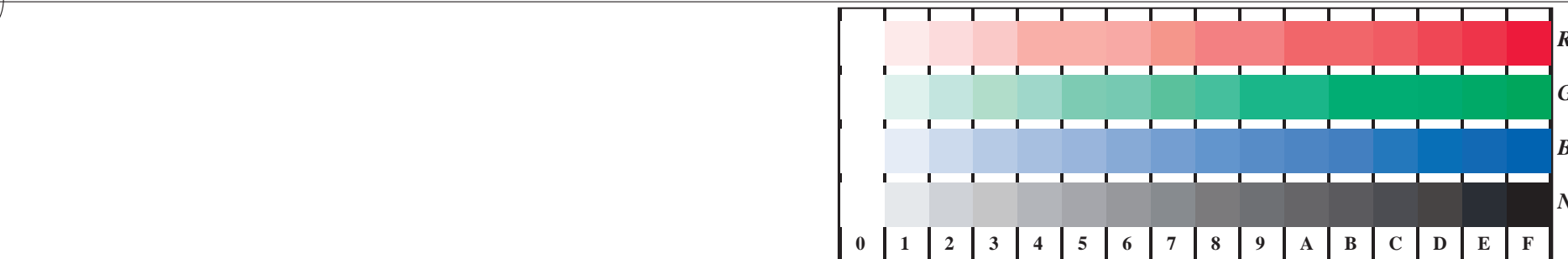


TN850-7, Figur D3Wde: 14 CIE-prøvefarger og 2 + 16 gråtrinn (sf); $rgb/cmy0 \rightarrow rgb_{de}$ setrgbcolor

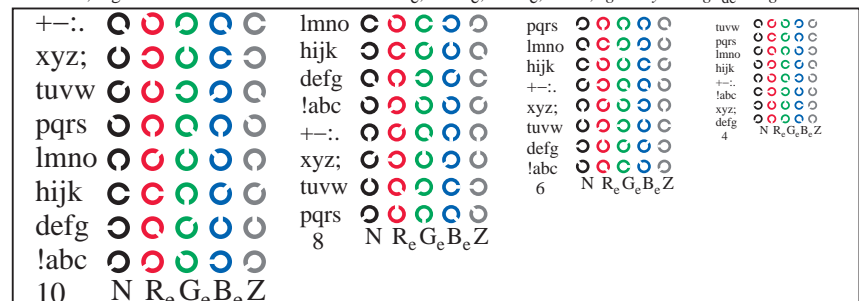


se lignende filer: <http://130.149.60.45/~farbmetrik/TN85/TN85L0FP.PDF> / .PS
 teknisk informasjon: <http://www.ps.bam.de> eller <http://130.149.60.45/~farbmetrik>

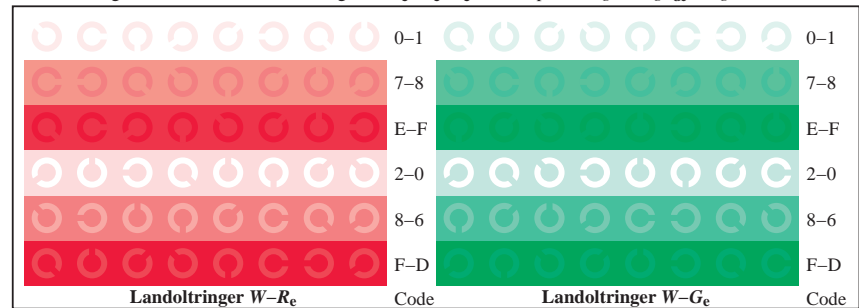
TUB registrering: 20150701-TN85/TN85L0FP.PDF /.PS
 anvendelse for måling av offsettrykk output, separasjoncmykn6* (CMYK)
 TUB-material: code=rh4ta



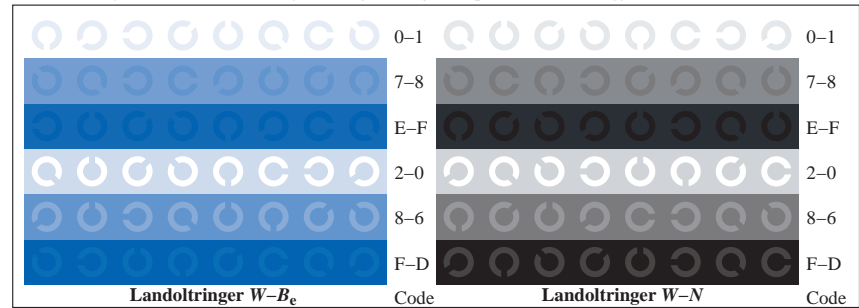
TN851-1, Figur D4Wde: 16 ekvidistante trinn W-Re; W-Ge; W-Be; W-N; rgb/cmy0->rgbde setrgbcolor



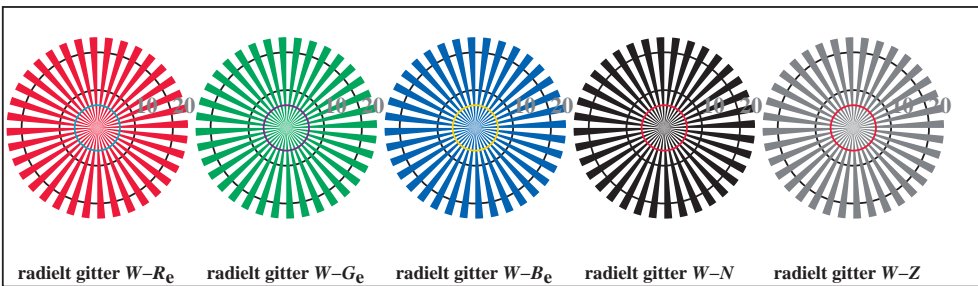
TN851-3, Figur D5Wde: Skrift Landoltringer N; Re; Ge; Be; Z; PS operator rgb->rgbde setrgbcolor



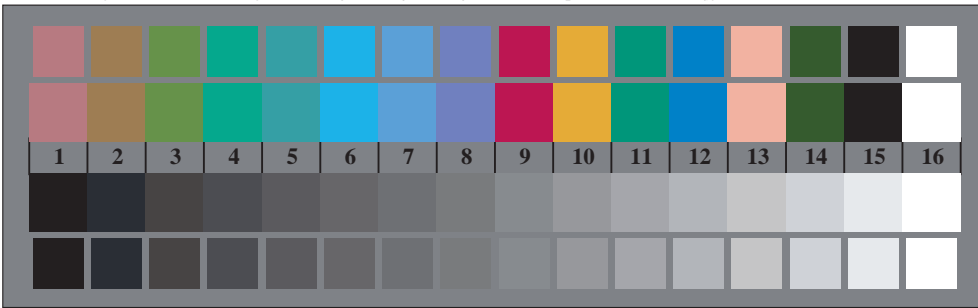
TN851-5, Figur D6Wde: Landoltringer W-Re; W-Ge; PS operator rgb->rgbde setrgbcolor



TN851-7, Figur D7Wde: Landoltringer W-Be; W-N; PS operator rgb->rgbde setrgbcolor



TN850-5, Figur D2Wde: radielt gitter W-Re; W-Ge; W-Be; W-N; PS operator rgb->rgbde setrgbcolor

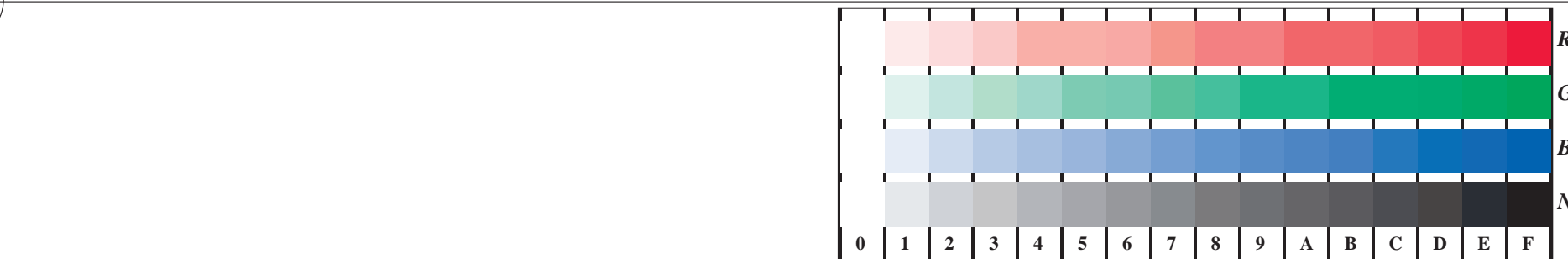


TN850-7, Figur D3Wde: 14 CIE-prøvefarger og 2 + 16 gråtrinn (sf); rgb/cmy0->rgbde setrgbcolor

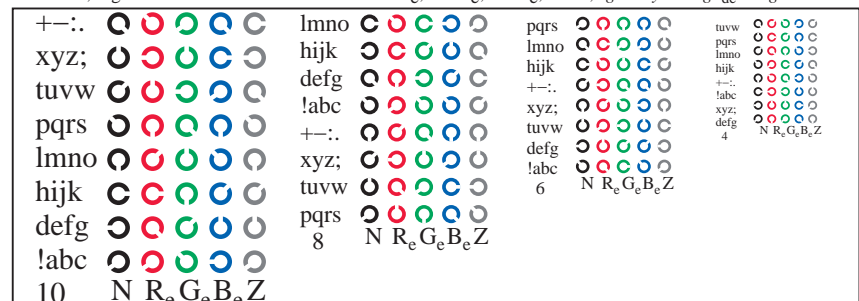


se lignende filer: <http://130.149.60.45/~farbmetrik/TN85/TN85L0FP.PDF> / .PS
 teknisk informasjon: <http://www.ps.bam.de> eller <http://130.149.60.45/~farbmetrik>

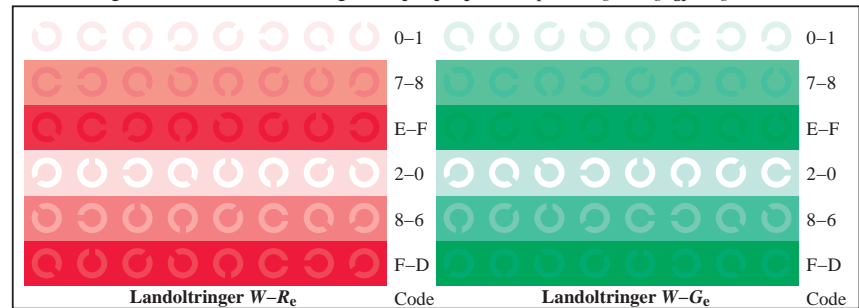
TUB registrering: 20150701-TN85/TN85L0FP.PDF /.PS
 anvendelse for måling av offsettrykk output, separasjoncmyn6* (CMYK)
 TUB-material: code=rh4ta



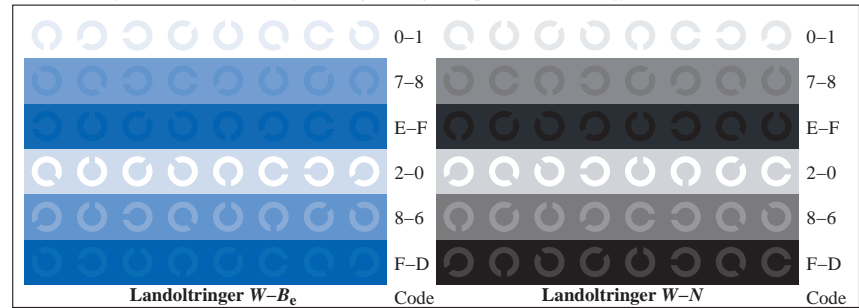
TN851-1, Figur D4Wde: 16 ekvidistante trinn W-Re; W-Ge; W-Be; W-N; rgb/cmy0->rgbde setrgbcolor



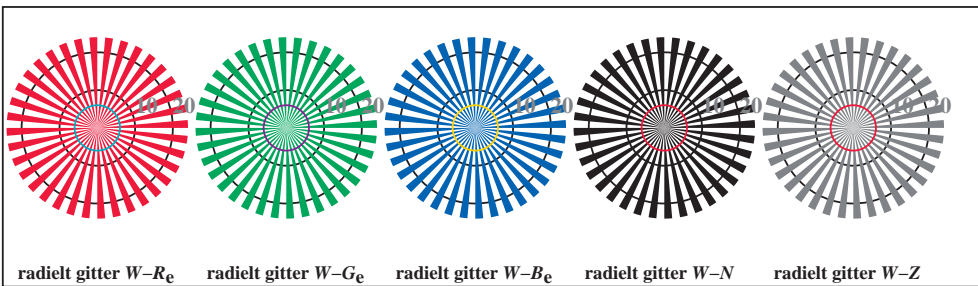
TN851-3, Figur D5Wde: Skrift Landoltringer N; Re; Ge; Be; Z; PS operator rgb->rgbde setrgbcolor



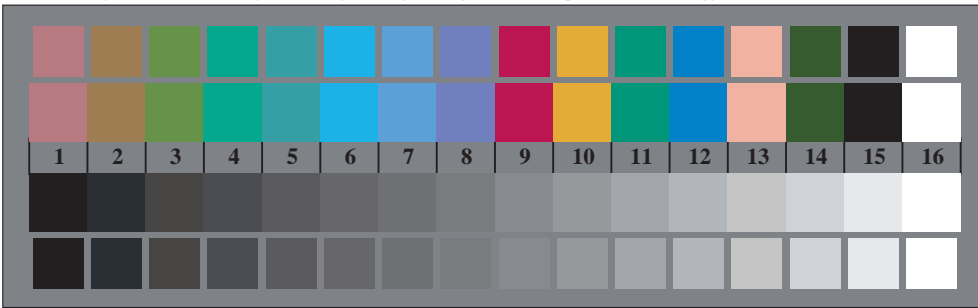
TN851-5, Figur D6Wde: Landoltringer W-Re; W-Ge; PS operator rgb->rgbde setrgbcolor



TN851-7, Figur D7Wde: Landoltringer W-Be; W-N; PS operator rgb->rgbde setrgbcolor



TN850-5, Figur D2Wde: radielt gitter W-Re; W-Ge; W-Be; W-N; PS operator rgb->rgbde setrgbcolor

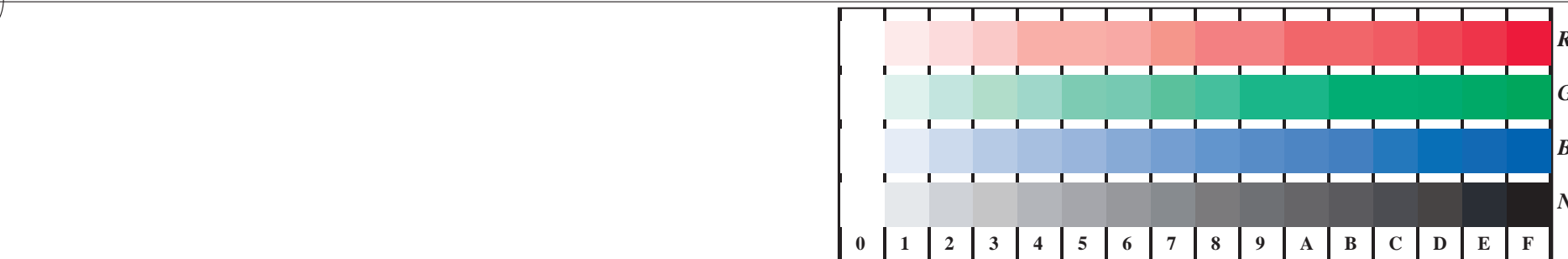


TN850-7, Figur D3Wde: 14 CIE-prøvefarger og 2 + 16 gråtrinn (sf); rgb/cmy0->rgbde setrgbcolor

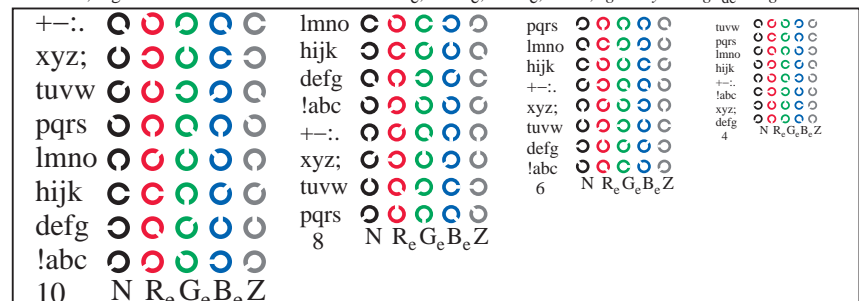


se lignende filer: <http://130.149.60.45/~farbmetrik/TN85/TN85L0FP.PDF> / .PS
 teknisk informasjon: <http://www.ps.bam.de> eller <http://130.149.60.45/~farbmetrik>

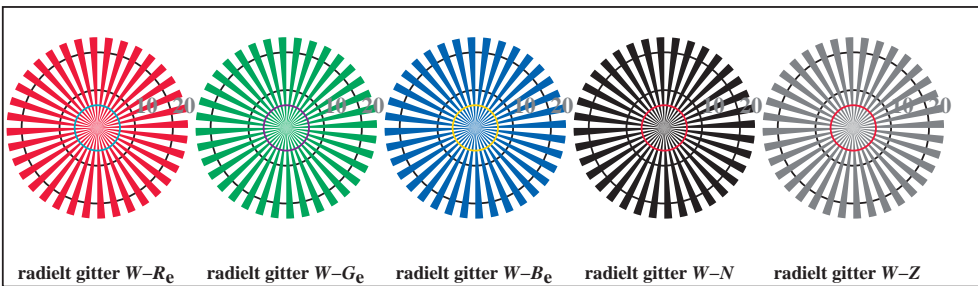
TUB registrering: 20150701-TN85/TN85L0FP.PDF /.PS
 anvendelse for måling av offsettrykk output, separasjoncmykn6* (CMYK)
 TUB-material: code=rh4ta



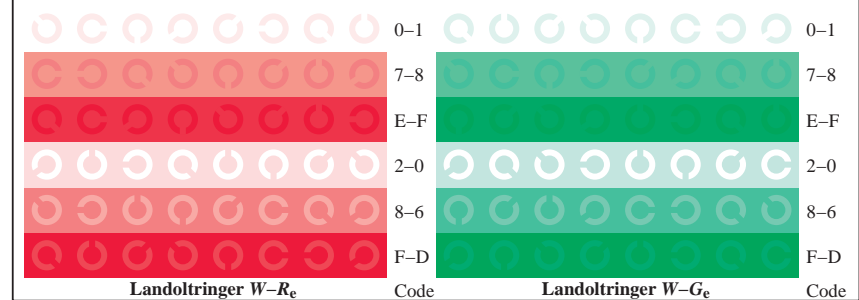
TN851-1, Figur D4Wde: 16 ekvidistante trinn $W-R_e$; $W-G_e$; $W-B_e$; $W-N$; $rgb/cmy0 \rightarrow rgb_{de}$ setrgbcolor



TN851-3, Figur D5Wde: Skrift Landoltringer N; R_e ; G_e ; B_e ; Z; PS operator $rgb \rightarrow rgb_{de}$ setrgbcolor



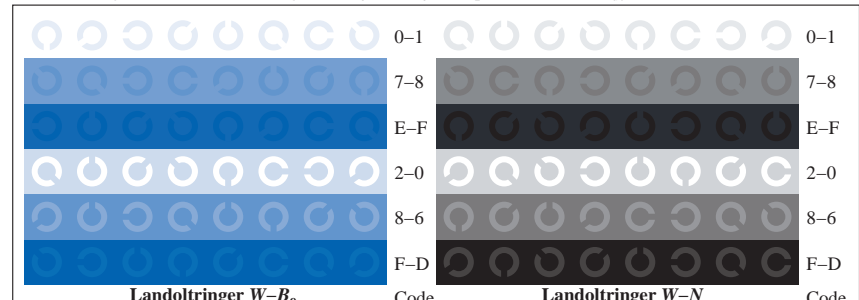
TN850-5, Figur D2Wde: radielt gitter $W-R_e$; $W-G_e$; $W-B_e$; $W-N$; PS operator $rgb \rightarrow rgb_{de}$ setrgbcolor



TN851-5, Figur D6Wde: Landoltringer $W-R_e$; $W-G_e$; PS operator $rgb \rightarrow rgb_{de}$ setrgbcolor

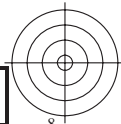
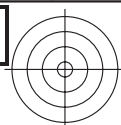


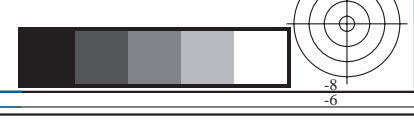
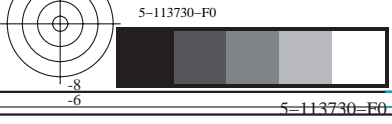
TN850-7, Figur D3Wde: 14 CIE-prøvefarger og 2 + 16 gråtrinn (sf); $rgb/cmy0 \rightarrow rgb_{de}$ setrgbcolor

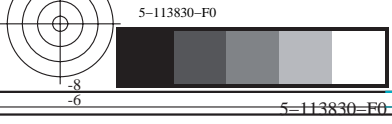


TN851-7, Figur D7Wde: Landoltringer $W-B_e$; $W-N$; PS operator $rgb \rightarrow rgb_{de}$ setrgbcolor

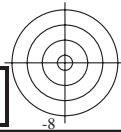
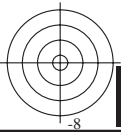
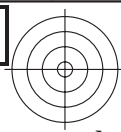






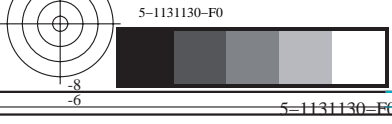


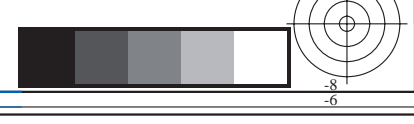
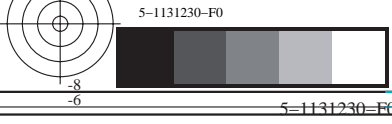


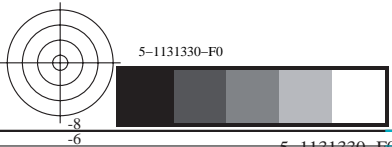


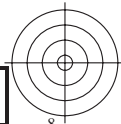
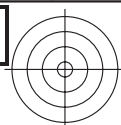
5=1131030-F0

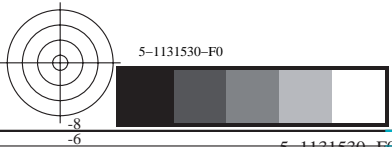
5=1131030-F0

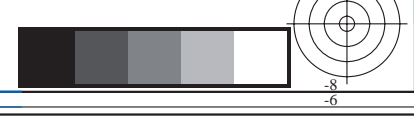
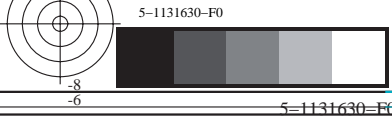


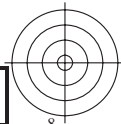
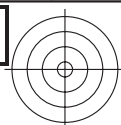












5-1131730-F0

5=1131730-F0



