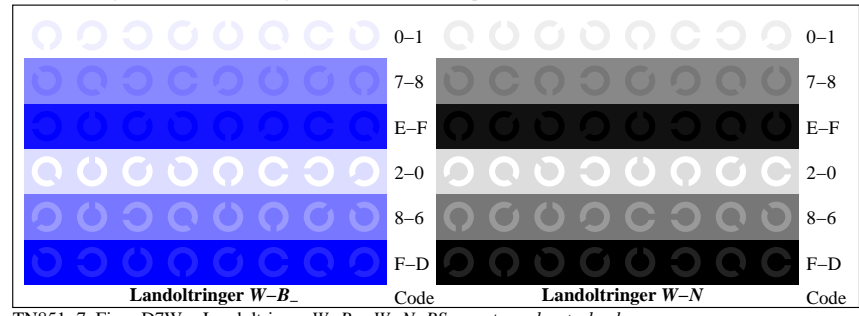
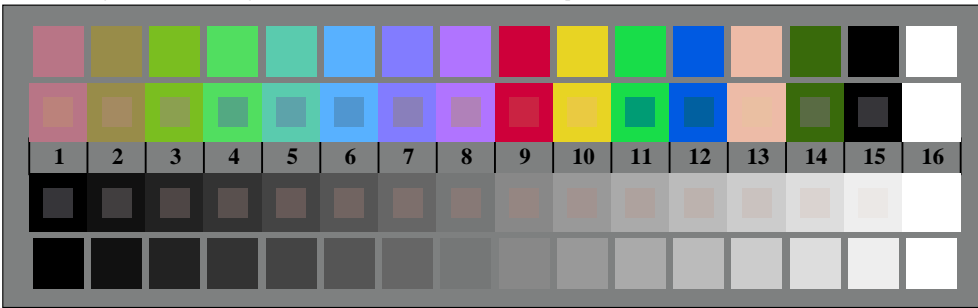
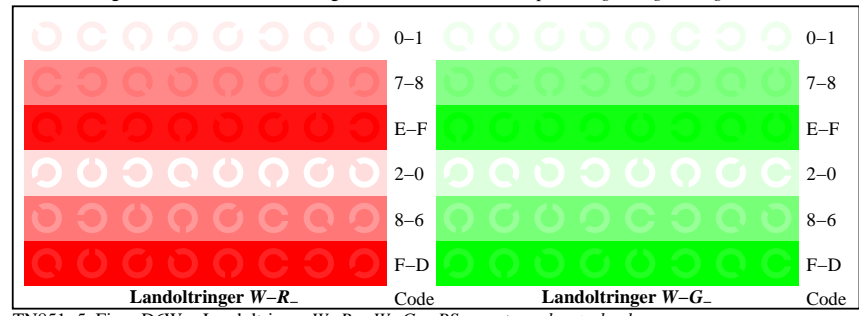
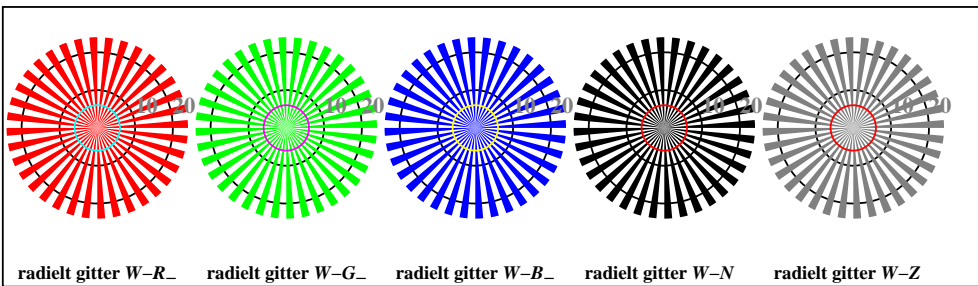
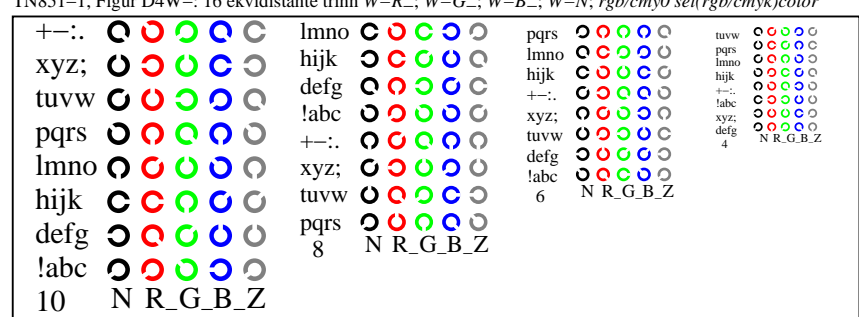
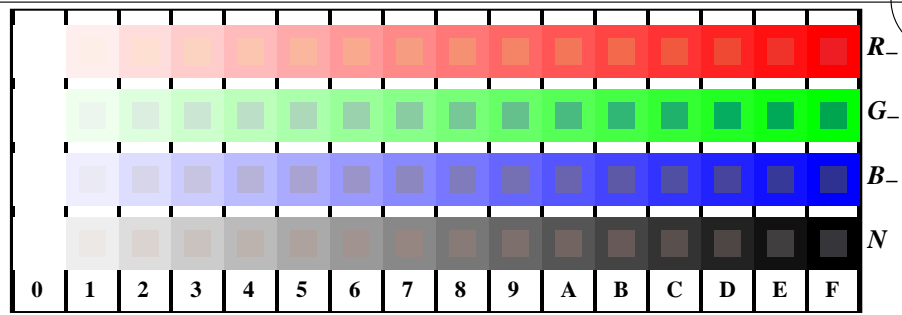


http://130.149.60.45/~farbmetrik/TN85/TN85L0FA.TXT /PS; start output  
F: 3D-linearisering TN85/TN85LJ30FA.DAT i fil (F), side 1/22

se lignende filer: <http://130.149.60.45/~farbmetrik/TN85/TN85L0FA.TXT> /PS  
teknisk informasjon: <http://www.ps.bam.de> eller <http://130.149.60.45/~farbmetrik>

TUB registrering: 20150701-TN85/TN85L0FA.TXT /PS  
anvendelse for måling av offsettrykk output

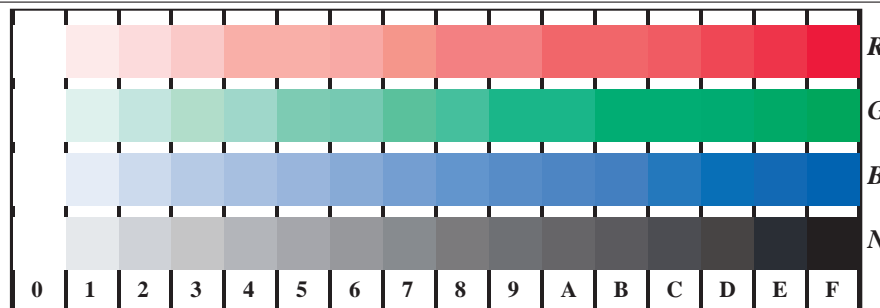
TUB-material: code=rh4ta



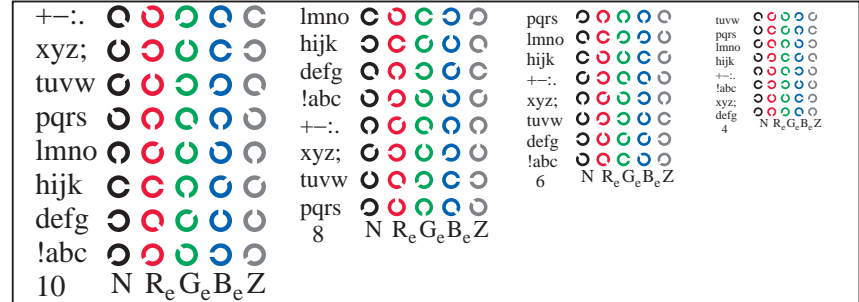
prøveplansje TN85; 4(ISO/IEC 15775 + ISO/IEC TR 24705)input: rgb/cmyk -> w/rgb/cmyk-  
kromatisk prøveplansje RGB output: ingen ending

se lignende filer: <http://130.149.60.45/~farbmetrik/TN85/TN85L0FA.TXT> /.PS  
teknisk informasjon: <http://www.ps.bam.de> eller <http://130.149.60.45/~farbmetrik>

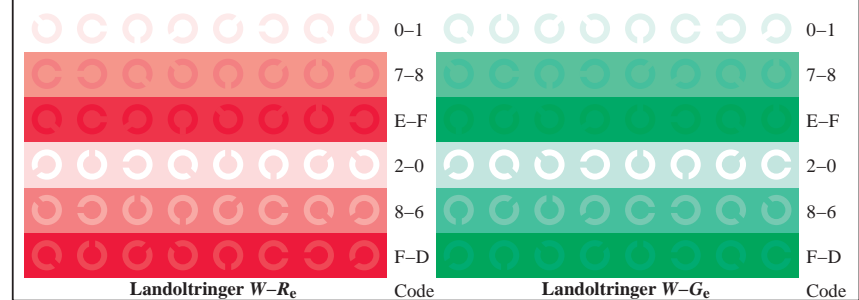
TUB registrering: 20150701-TN85/TN85L0FA.TXT /.PS  
anvendelse for måling av offsettrykk output, separasjoncmyk\* (CMYK)  
TUB-material: code=rh4ta



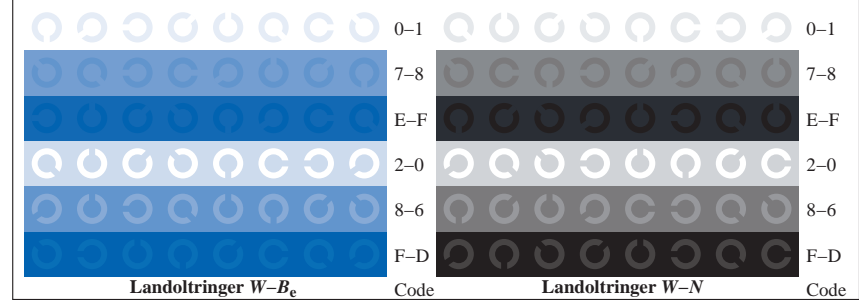
TN851-1, Figur D4Wde: 16 ekvidistante trinn W-Re; W-Ge; W-Be; W-N; rgb/cmy0->rgb<sub>de</sub> setrgbcolor



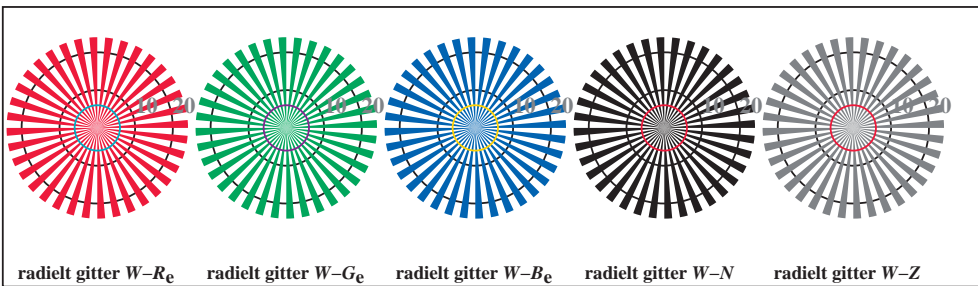
TN851-3, Figur D5Wde: Skrift Landoltringer N; R<sub>e</sub>; G<sub>e</sub>; B<sub>e</sub>; Z; PS operator rgb->rgb<sub>de</sub> setrgbcolor



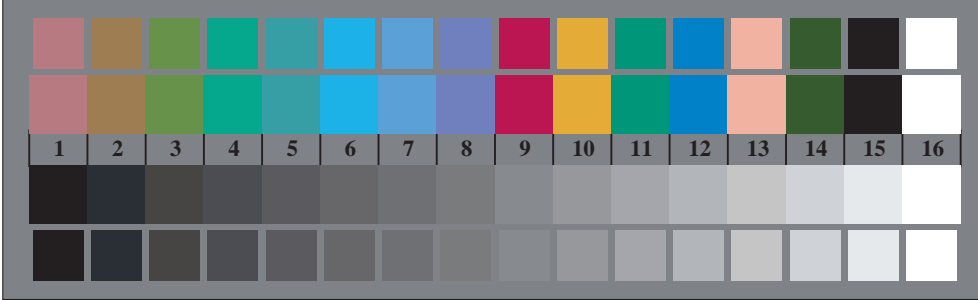
TN851-5, Figur D6Wde: Landoltringer W-Re; W-Ge; PS operator rgb->rgb<sub>de</sub> setrgbcolor



TN851-7, Figur D7Wde: Landoltringer W-Be; W-N; PS operator rgb->rgb<sub>de</sub> setrgbcolor



TN850-5, Figur D2Wde: radielt gitter W-Re; W-Ge; W-Be; W-N; PS operator rgb->rgb<sub>de</sub> setrgbcolor

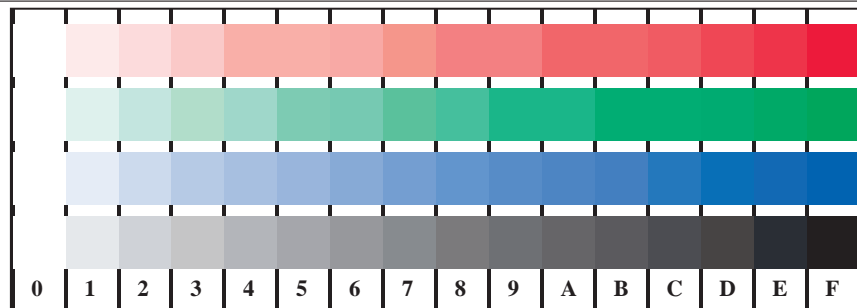


TN850-7, Figur D3Wde: 14 CIE-prøvefarger og 2 + 16 gråtrinn (sf); rgb/cmy0->rgb<sub>de</sub> setrgbcolor

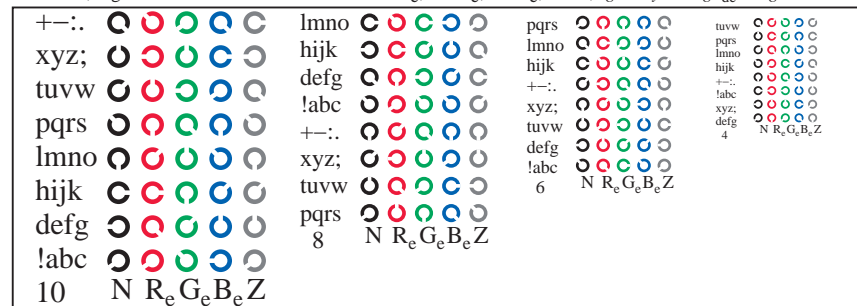


se lignende filer: <http://130.149.60.45/~farbmetrik/TN85/TN85L0FA.TXT> / .PS  
 teknisk informasjon: <http://www.ps.bam.de> eller <http://130.149.60.45/~farbmetrik>

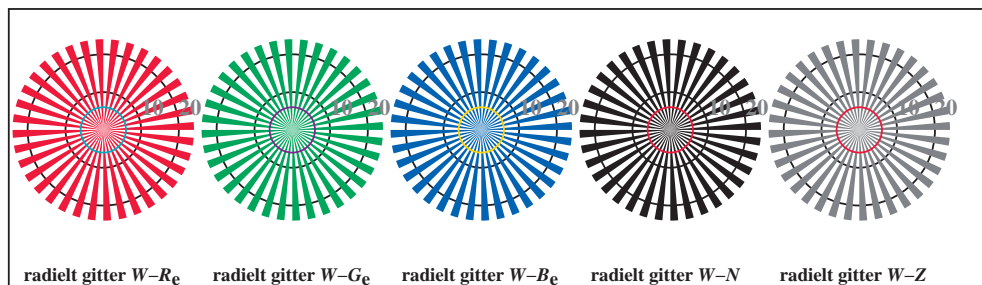
TUB registrering: 20150701-TN85/TN85L0FA.TXT /.PS  
 anvendelse for måling av offsettrykk output, separasjoncmyk\* (CMYK)  
 TUB-material: code=rh4ta



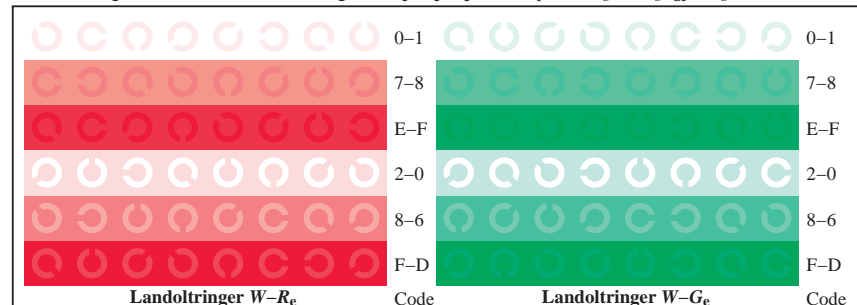
TN851-1, Figur D4Wde: 16 ekvidistante trinn  $W-R_e$ ;  $W-G_e$ ;  $W-B_e$ ;  $W-N$ ;  $rgb/cmyk_0 \rightarrow rgb_{de}$  setrgbcolor



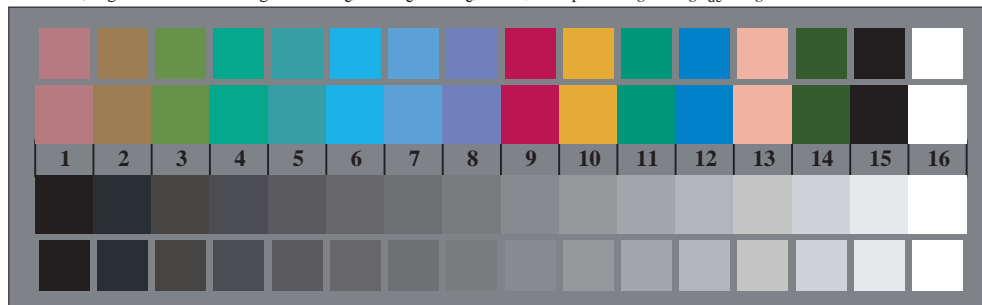
TN851-3, Figur D5Wde: Skrift Landoltringer N; R<sub>e</sub>; G<sub>e</sub>; B<sub>e</sub>; Z; PS operator  $rgb \rightarrow rgb_{de}$  setrgbcolor



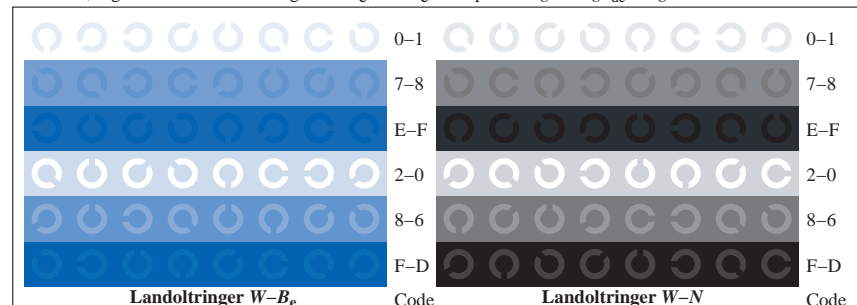
TN850-5, Figur D2Wde: radielt gitter  $W-R_e$ ;  $W-G_e$ ;  $W-B_e$ ;  $W-N$ ; PS operator  $rgb \rightarrow rgb_{de}$  setrgbcolor



TN851-5, Figur D6Wde: Landoltringer  $W-R_e$ ;  $W-G_e$ ; PS operator  $rgb \rightarrow rgb_{de}$  setrgbcolor



TN850-7, Figur D3Wde: 14 CIE-prøvefarger og 2 + 16 gråtrinn (sf);  $rgb/cmyk_0 \rightarrow rgb_{de}$  setrgbcolor

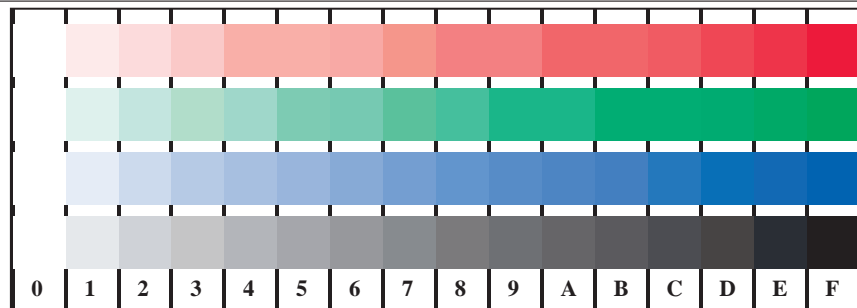


TN851-7, Figur D7Wde: Landoltringer  $W-B_e$ ;  $W-N$ ; PS operator  $rgb \rightarrow rgb_{de}$  setrgbcolor

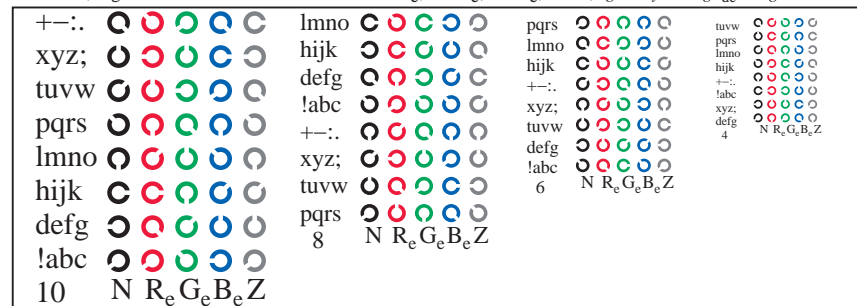
se lignende filer: <http://130.149.60.45/~farbmetrik/TN85/TN85L0FA.TXT> / .PS  
 teknisk informasjon: <http://www.ps.bam.de> eller <http://130.149.60.45/~farbmetrik>

TUB registrering: 20150701-TN85/TN85L0FA.TXT /.PS  
 anvendelse for måling av offsettrykk output, separasjoncmyk\* (CMYK)

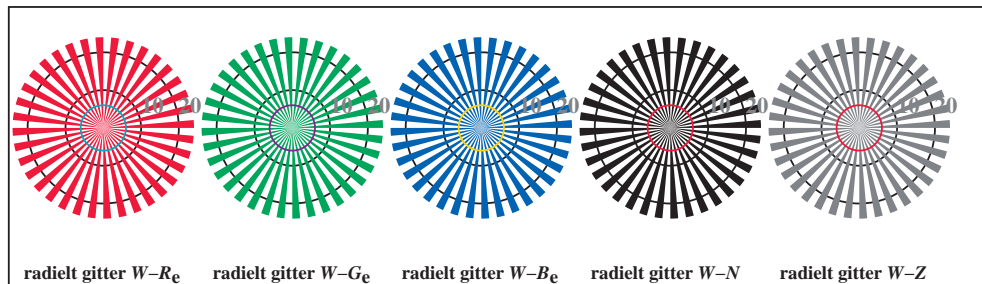
TUB-material: code=rh4ta



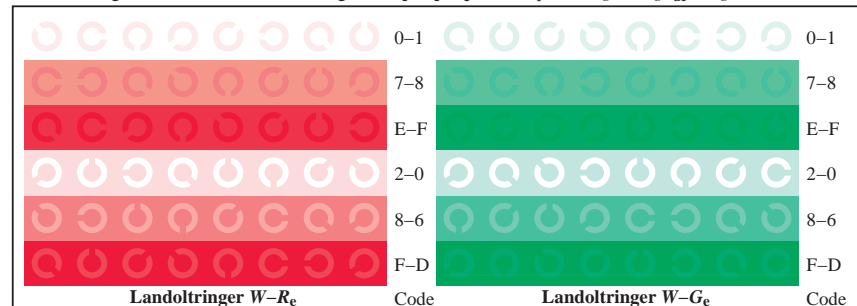
TN851-1, Figur D4Wde: 16 ekvidistante trinn  $W-R_e$ ;  $W-G_e$ ;  $W-B_e$ ;  $W-N$ ;  $rgb/cmy0 \rightarrow rgb_{de}$  setrgbcolor



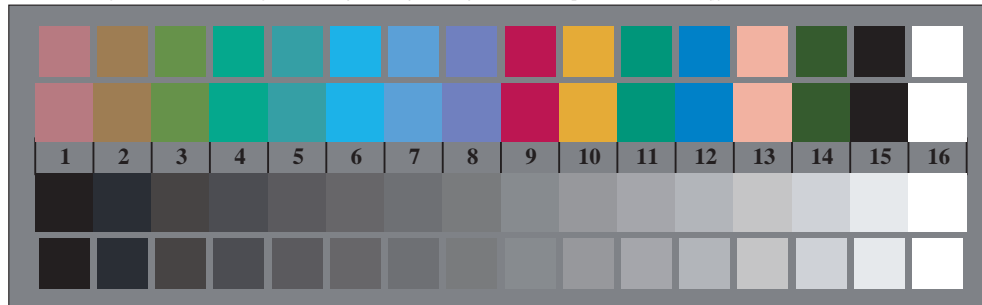
TN851-3, Figur D5Wde: Skrift Landoltringer  $N$ ;  $R_e$ ;  $G_e$ ;  $B_e$ ;  $Z$ ; PS operator  $rgb \rightarrow rgb_{de}$  setrgbcolor



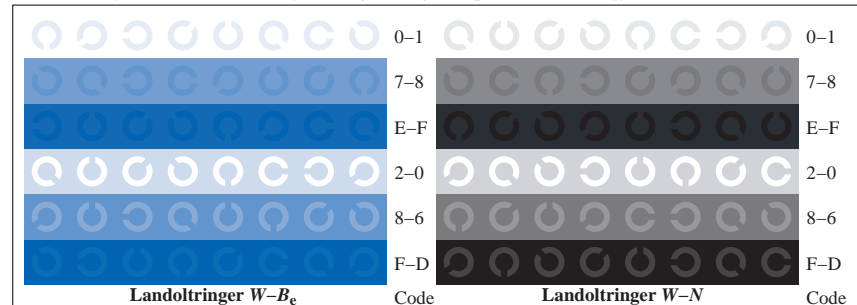
TN850-5, Figur D2Wde: radielt gitter  $W-R_e$ ;  $W-G_e$ ;  $W-B_e$ ;  $W-N$ ; PS operator  $rgb \rightarrow rgb_{de}$  setrgbcolor



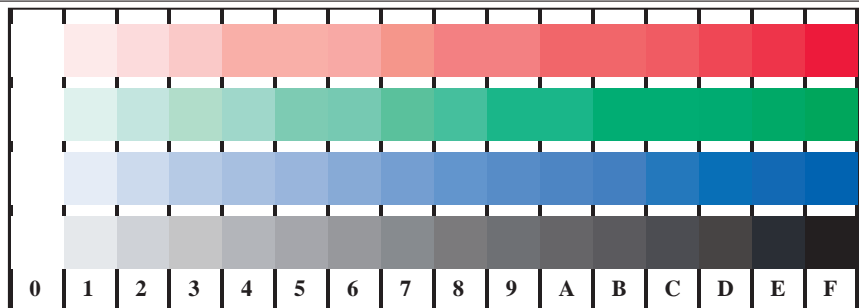
TN851-5, Figur D6Wde: Landoltringer  $W-R_e$ ;  $W-G_e$ ; PS operator  $rgb \rightarrow rgb_{de}$  setrgbcolor



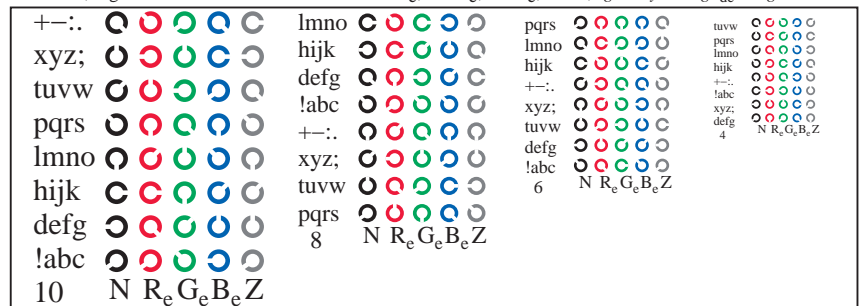
TN850-7, Figur D3Wde: 14 CIE-prøvefarger og 2 + 16 gråtrinn (sf);  $rgb/cmy0 \rightarrow rgb_{de}$  setrgbcolor



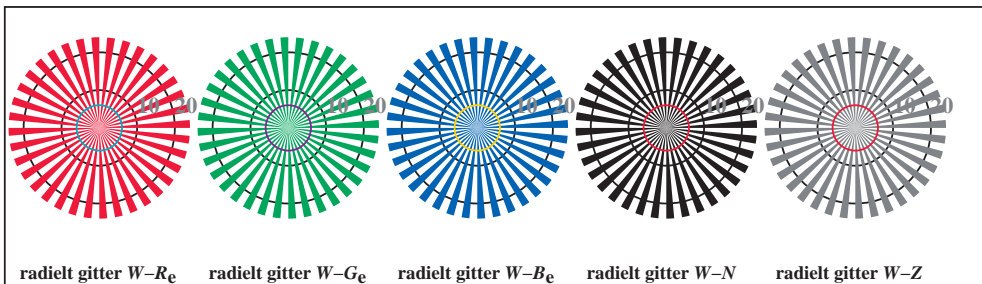
TN851-7, Figur D7Wde: Landoltringer  $W-B_e$ ;  $W-N$ ; PS operator  $rgb \rightarrow rgb_{de}$  setrgbcolor



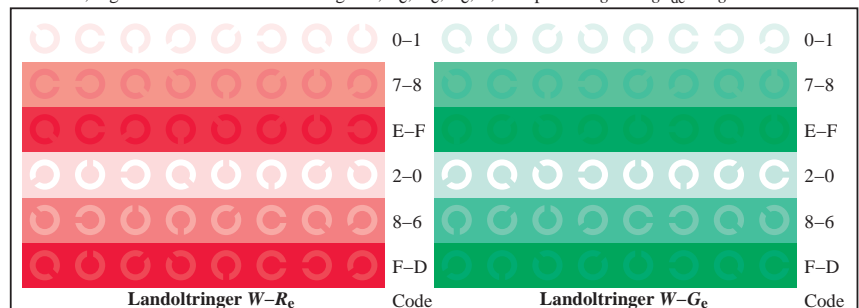
TN851-1, Figur D4Wde: 16 ekvidistante trinn  $W-R_e$ ;  $W-G_e$ ;  $W-B_e$ ;  $W-N$ ;  $rgb/cmyk_0 \rightarrow rgb_{de}$  setrgbcolor



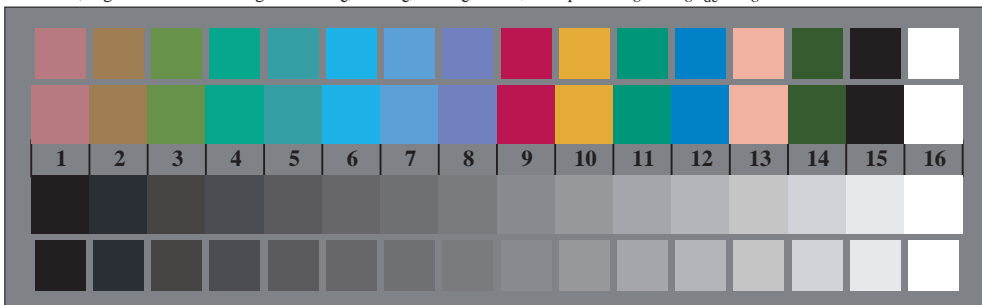
TN851-3, Figur D5Wde: Skrift Landoltringer N; R<sub>e</sub>; G<sub>e</sub>; B<sub>e</sub>; Z; PS operator  $rgb \rightarrow rgb_{de}$  setrgbcolor



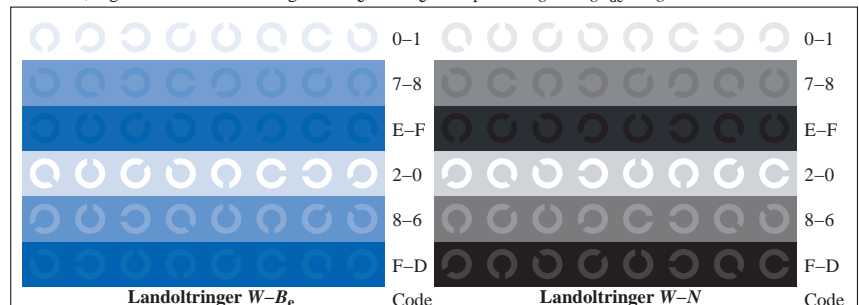
TN850-5, Figur D2Wde: radielt gitter  $W-R_e$ ;  $W-G_e$ ;  $W-B_e$ ;  $W-N$ ; PS operator  $rgb \rightarrow rgb_{de}$  setrgbcolor



TN851-5, Figur D6Wde: Landoltringer  $W-R_e$ ;  $W-G_e$ ; PS operator  $rgb \rightarrow rgb_{de}$  setrgbcolor



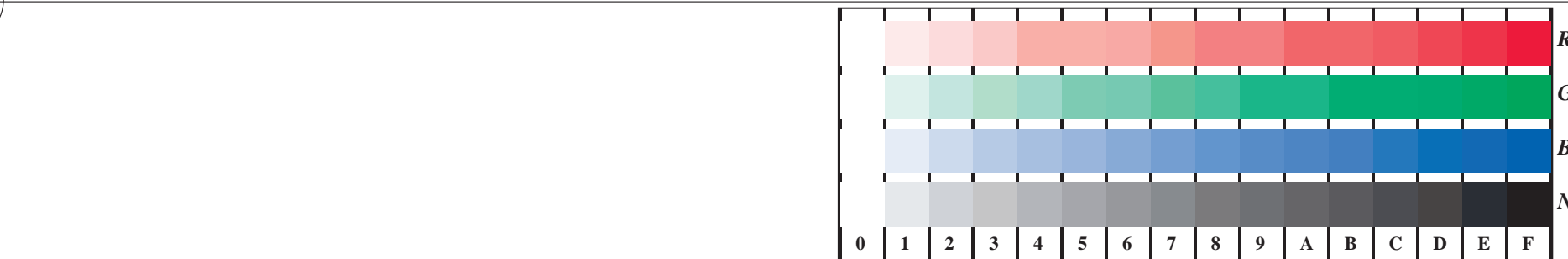
TN850-7, Figur D3Wde: 14 CIE-prøvefarger og 2 + 16 gråtrinn (sf);  $rgb/cmyk_0 \rightarrow rgb_{de}$  setrgbcolor



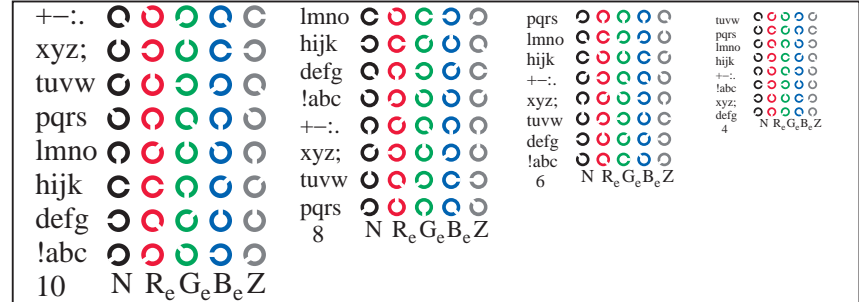
TN851-7, Figur D7Wde: Landoltringer  $W-B_e$ ;  $W-N$ ; PS operator  $rgb \rightarrow rgb_{de}$  setrgbcolor

se lignende filer: <http://130.149.60.45/~farbmetrik/TN85/TN85L0FA.TXT> /.PS  
 teknisk informasjon: <http://www.ps.bam.de> eller <http://130.149.60.45/~farbmetrik>

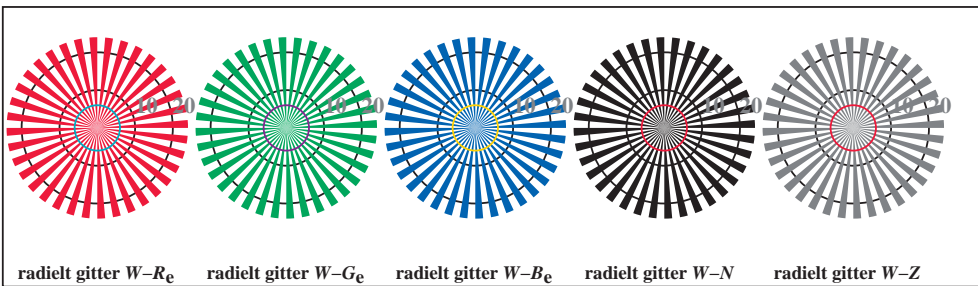
TUB registrering: 20150701-TN85/TN85L0FA.TXT /.PS  
 anvendelse for måling av offsettrykk output, separasjoncmyk\* (CMYK)  
 TUB-material: code=rh4ta



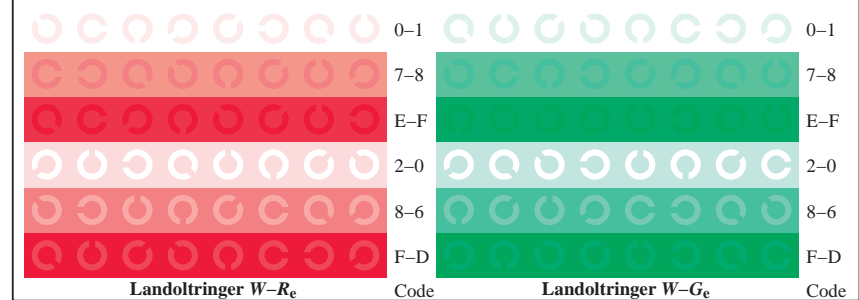
TN851-1, Figur D4Wde: 16 ekvidistante trinn W-Re; W-Ge; W-Be; W-N; rgb/cmy0->rgb<sub>de</sub> setrgbcolor



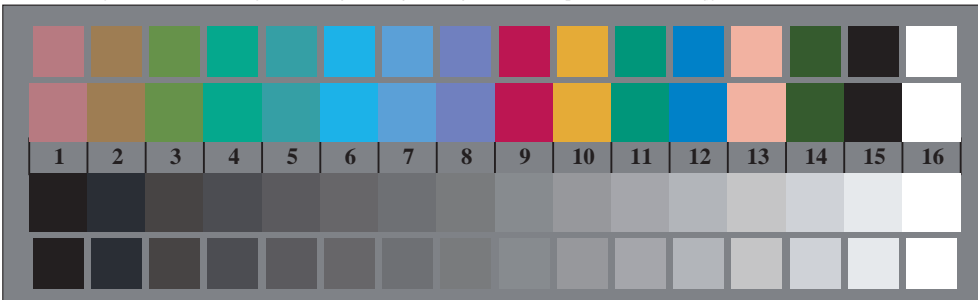
TN851-3, Figur D5Wde: Skrift Landoltringer N; Re; Ge; Be; Z; PS operator rgb->rgb<sub>de</sub> setrgbcolor



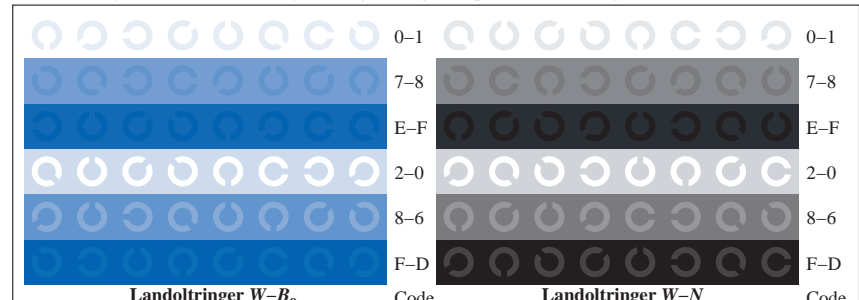
TN850-5, Figur D2Wde: radielt gitter W-Re; W-Ge; W-Be; W-N; PS operator rgb->rgb<sub>de</sub> setrgbcolor



TN851-5, Figur D6Wde: Landoltringer W-Re; W-Ge; PS operator rgb->rgb<sub>de</sub> setrgbcolor



TN850-7, Figur D3Wde: 14 CIE-prøvefarger og 2 + 16 gråtrinn (sf); rgb/cmy0->rgb<sub>de</sub> setrgbcolor



TN851-7, Figur D7Wde: Landoltringer W-Be; W-N; PS operator rgb->rgb<sub>de</sub> setrgbcolor

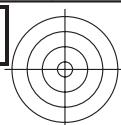


prøveplansje TN85; 4(ISO/IEC 15775 + ISO/IEC TR 24705)input: rgb/cmyk -> rgb<sub>de</sub>  
 kromatisk prøveplansje RGB, 3D=1, de=1, cmyk\*  
 output: 3D-linearisering til cmyk\*<sub>de</sub>

TUB registrering: 20150701-TN85/TN85L0FA.TXT /.PS TUB-material: code=rh4ta  
anvendelse for måling av offsettrykk output, separasjoncmyk\* (CMYK)

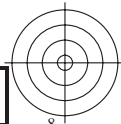
se lignende filer: <http://130.149.60.45/~farbmetrik/TN85/TN85.HTM>  
teknisk informasjon: <http://www.ps.bam.de> eller <http://130.149.60.45/~farbmetrik>





TUB registrering: 20150701-TN85/TN85L0FA.TXT /.PS TUB-material: code=rh4ta  
anvendelse for måling av offsettrykk output, separasjoncmyk\* (CMYK)

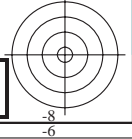
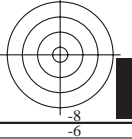
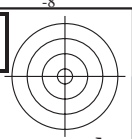
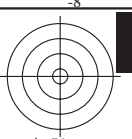
se lignende filer: <http://130.149.60.45/~farbmetrik/TN85/TN85.HTM>  
teknisk informasjon: <http://www.ps.bam.de> eller <http://130.149.60.45/~farbmetrik>



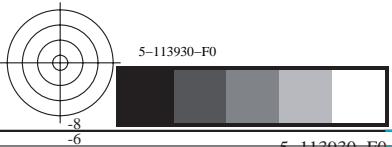


TUB registrering: 20150701-TN85/TN85L0FA.TXT /.PS TUB-material: code=rh4ta  
anvendelse for måling av offsettrykk output, separasjoncmyk\* (CMYK)

se lignende filer: <http://130.149.60.45/~farbmetrik/TN85/TN85.HTM>  
teknisk informasjon: <http://www.ps.bam.de> eller <http://130.149.60.45/~farbmetrik>



5-113830-F0



TUB registrering: 20150701-TN85/TN85L0FA.TXT /.PS TUB-material: code=rh4ta  
anvendelse for måling av offsettrykk output, separasjoncmyk\* (CMYK)

se lignende filer: <http://130.149.60.45/~farbmetrik/TN85/TN85.HTM>  
teknisk informasjon: <http://www.ps.bam.de> eller <http://130.149.60.45/~farbmetrik>



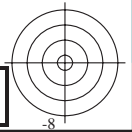
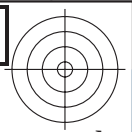
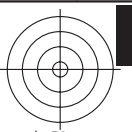
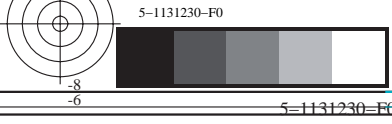
TUB registrering: 20150701-TN85/TN85L0FA.TXT /.PS TUB-material: code=rh4ta  
anvendelse for måling av offsettrykk output, separasjoncmyk\* (CMYK)

se lignende filer: <http://130.149.60.45/~farbmetrik/TN85/TN85.HTM>  
teknisk informasjon: <http://www.ps.bam.de> eller <http://130.149.60.45/~farbmetrik>



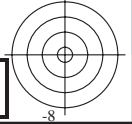
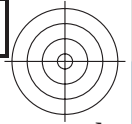
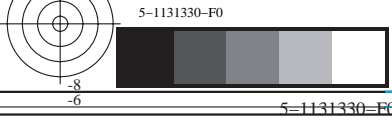
TUB registrering: 20150701-TN85/TN85L0FA.TXT /.PS TUB-material: code=rh4ta  
anvendelse for måling av offsettrykk output, separasjoncmyk\* (CMYK)

se lignende filer: <http://130.149.60.45/~farbmetrik/TN85/TN85.HTM>  
teknisk informasjon: <http://www.ps.bam.de> eller <http://130.149.60.45/~farbmetrik>



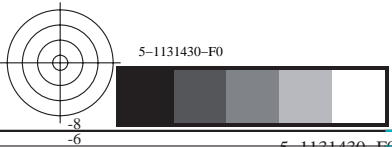
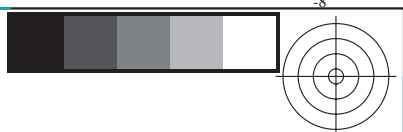
TUB registrering: 20150701-TN85/TN85L0FA.TXT /.PS TUB-material: code=rh4ta  
anvendelse for måling av offsettrykk output, separasjoncmyk\* (CMYK)

se lignende filer: <http://130.149.60.45/~farbmetrik/TN85/TN85.HTM>  
teknisk informasjon: <http://www.ps.bam.de> eller <http://130.149.60.45/~farbmetrik>



TUB registrering: 20150701-TN85/TN85L0FA.TXT /.PS TUB-material: code=rh4ta  
anvendelse for måling av offsettrykk output, separasjoncmyk\* (CMYK)

se lignende filer: <http://130.149.60.45/~farbmetrik/TN85/TN85.HTM>  
teknisk informasjon: <http://www.ps.bam.de> eller <http://130.149.60.45/~farbmetrik>



5-1131430-F0

TUB registrering: 20150701-TN85/TN85L0FA.TXT /.PS TUB-material: code=rh4ta  
anvendelse for måling av offsettrykk output, separasjoncmyk\* (CMYK)

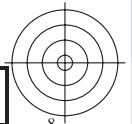
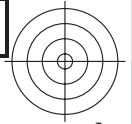
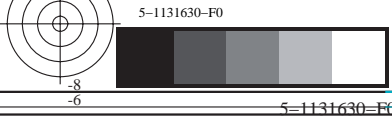
se lignende filer: <http://130.149.60.45/~farbmetrik/TN85/TN85.HTM>  
teknisk informasjon: <http://www.ps.bam.de> eller <http://130.149.60.45/~farbmetrik>





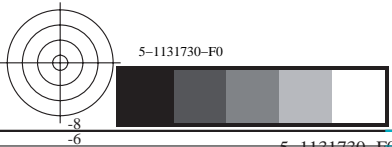
TUB registrering: 20150701-TN85/TN85L0FA.TXT /.PS TUB-material: code=rh4ta  
anvendelse for måling av offsettrykk output, separasjoncmyk\* (CMYK)

se lignende filer: <http://130.149.60.45/~farbmetrik/TN85/TN85.HTM>  
teknisk informasjon: <http://www.ps.bam.de> eller <http://130.149.60.45/~farbmetrik>



TUB registrering: 20150701-TN85/TN85L0FA.TXT /.PS TUB-material: code=rh4ta  
anvendelse for måling av offsettrykk output, separasjoncmyk\* (CMYK)

se lignende filer: <http://130.149.60.45/~farbmetrik/TN85/TN85.HTM>  
teknisk informasjon: <http://www.ps.bam.de> eller <http://130.149.60.45/~farbmetrik>



TUB registrering: 20150701-TN85/TN85L0FA.TXT /.PS TUB-material: code=rh4ta  
anvendelse for måling av offsettrykk output, separasjoncmyk\* (CMYK)

se lignende filer: <http://130.149.60.45/~farbmetrik/TN85/TN85.HTM>  
teknisk informasjon: <http://www.ps.bam.de> eller <http://130.149.60.45/~farbmetrik>



TUB registrering: 20150701-TN85/TN85L0FA.TXT /.PS TUB-material: code=rh4ta  
anvendelse for måling av offsettrykk output, separasjoncmyk\* (CMYK)

se lignende filer: <http://130.149.60.45/~farbmetrik/TN85/TN85.HTM>  
teknisk informasjon: <http://www.ps.bam.de> eller <http://130.149.60.45/~farbmetrik>



TUB registrering: 20150701-TN85/TN85L0FA.TXT /.PS TUB-material: code=rh4ta  
anvendelse for måling av offsettrykk output, separasjoncmyk\* (CMYK)

se lignende filer: <http://130.149.60.45/~farbmetrik/TN85/TN85.HTM>  
teknisk informasjon: <http://www.ps.bam.de> eller <http://130.149.60.45/~farbmetrik>



