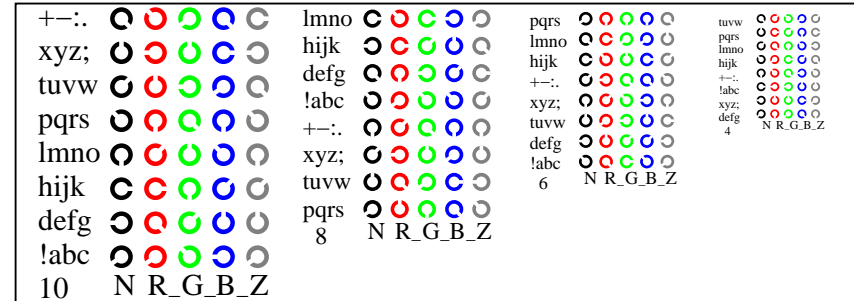
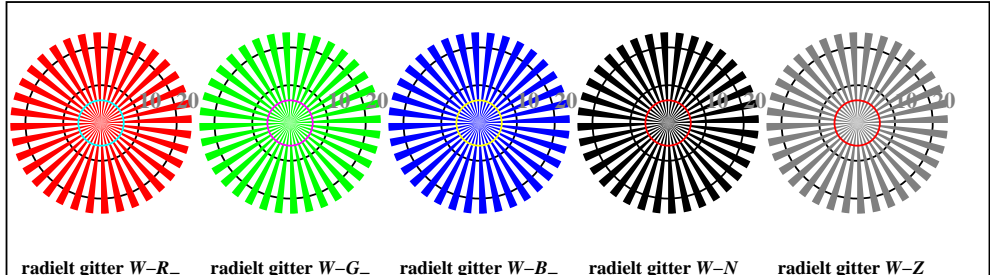


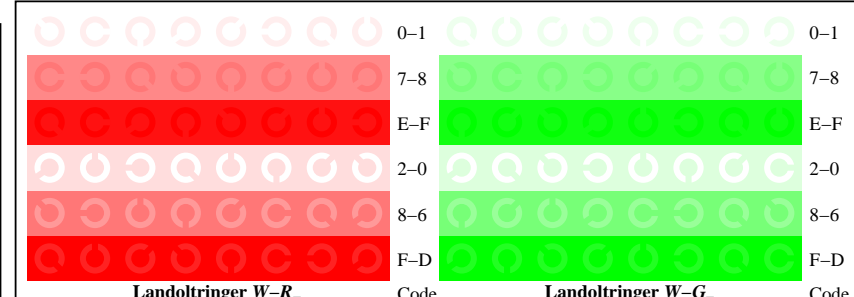
TN851-1, Figur D4W-: 16 ekvidistante trinn W-R<sub>-</sub>; W-G<sub>-</sub>; W-B<sub>-</sub>; W-N; rgb/cmy0 set(rgb/cmyk)color



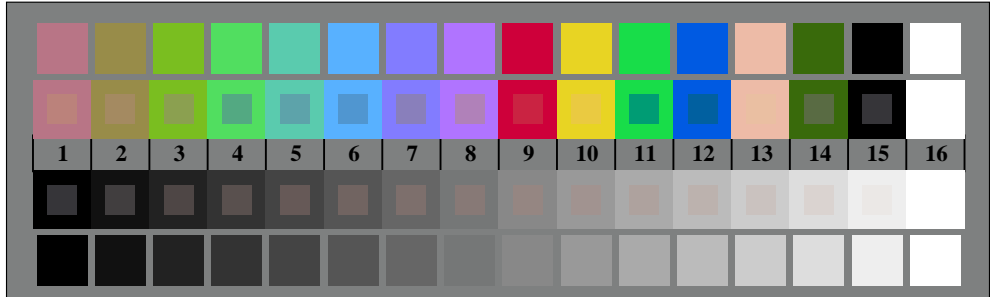
TN851-3, Figur D5W-: Skrift Landoltringer N; R<sub>-</sub>; G<sub>-</sub>; B<sub>-</sub>; Z; PS operator rgb->rgb\_setrgbcolor



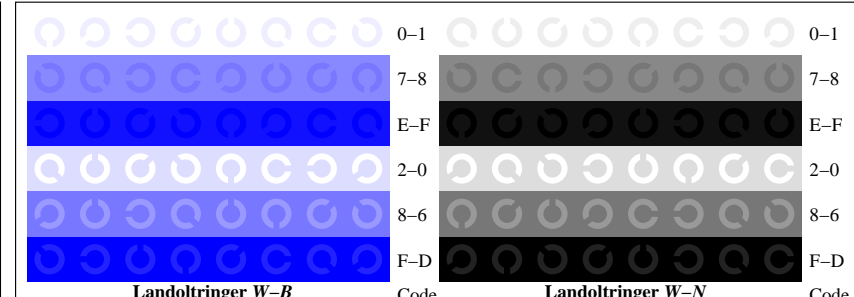
TN850-5, Figur D2W-: radielt gitter W-R<sub>-</sub>; W-G<sub>-</sub>; W-B<sub>-</sub>; W-N; PS operator rgb->rgb\_setrgbcolor



TN851-5, Figur D6W-: Landoltringer W-R<sub>-</sub>; W-G<sub>-</sub>; PS operator rgb\_setrgbcolor



TN850-7, Figur D3W-: 14 CIE-prøvefarger og 2 + 16 gråtrinn (sf); rgb/cmy0 set(rgb/cmyk)color



TN851-7, Figur D7W-: Landoltringer W-B<sub>-</sub>; W-N; PS operator rgb\_setrgbcolor