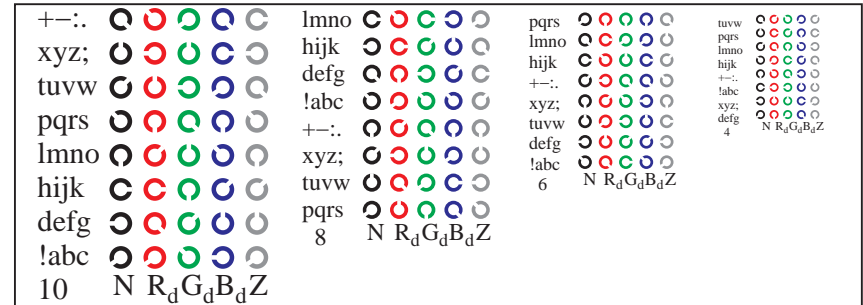
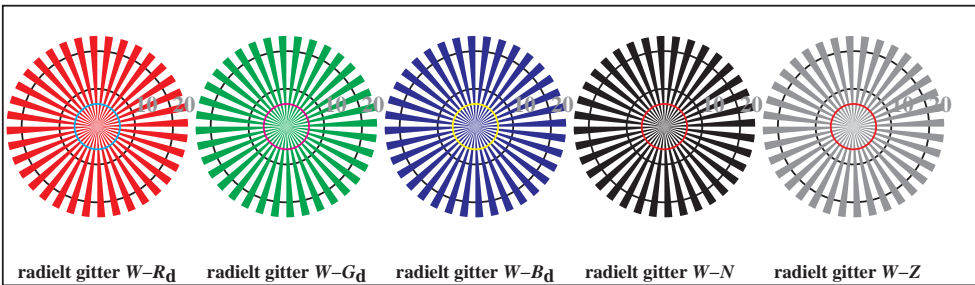


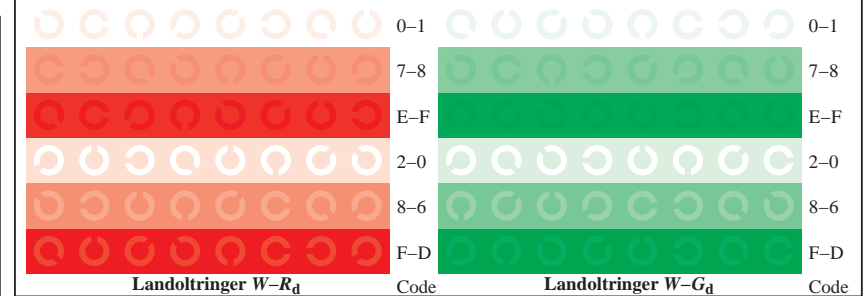
TN851-1, Figur D4Wd: 16 ekvidistante trinn $W-R_d$; $W-G_d$; $W-B_d$; $W-N$; $rgb/cmy0 \rightarrow rgb_d$ setrgbcolor



TN851-3, Figur D5Wd: Skrift Landoltringer N ; R_d ; G_d ; B_d ; Z ; PS operator $rgb \rightarrow rgb_d$ setrgbcolor



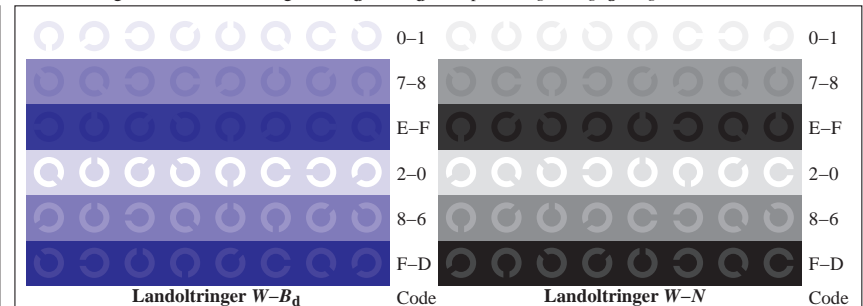
TN850-5, Figur D2Wd: radielt gitter $W-R_d$; $W-G_d$; $W-B_d$; $W-N$; PS operator $rgb \rightarrow rgb_d$ setrgbcolor



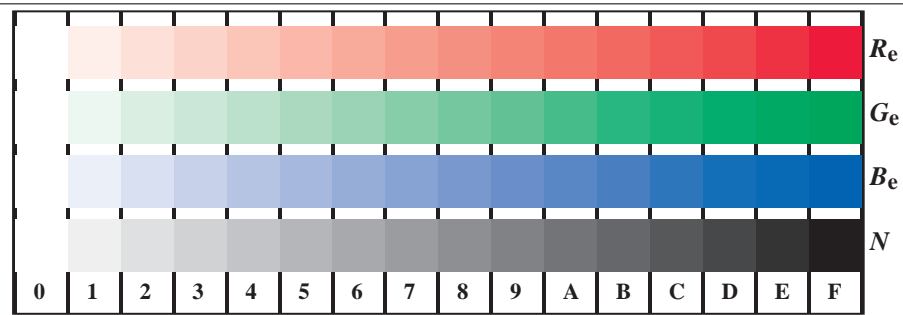
TN851-5, Figur D6Wd: Landoltringer $W-R_d$; $W-G_d$; PS operator $rgb \rightarrow rgb_d$ setrgbcolor



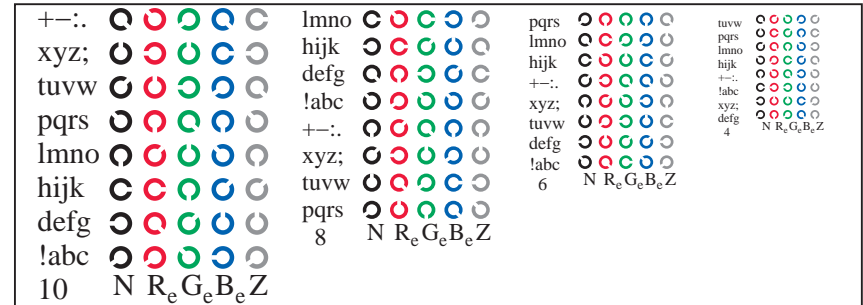
TN850-7, Figur D3Wd: 14 CIE-prøvefarger og 2 + 16 gråtrinn (sf); $rgb/cmy0 \rightarrow rgb_d$ setrgbcolor



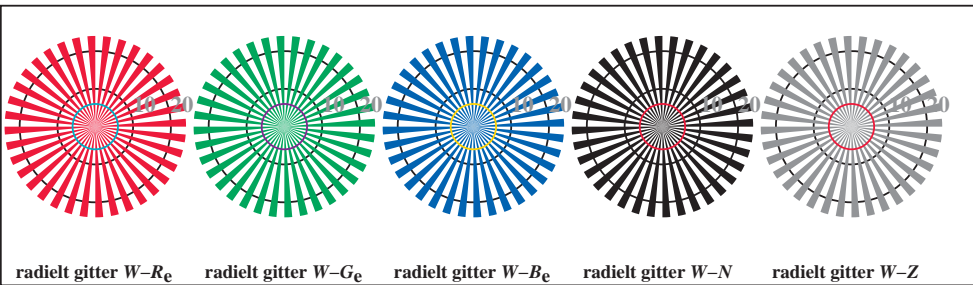
TN851-7, Figur D7Wd: Landoltringer $W-B_d$; $W-N$; PS operator $rgb \rightarrow rgb_d$ setrgbcolor



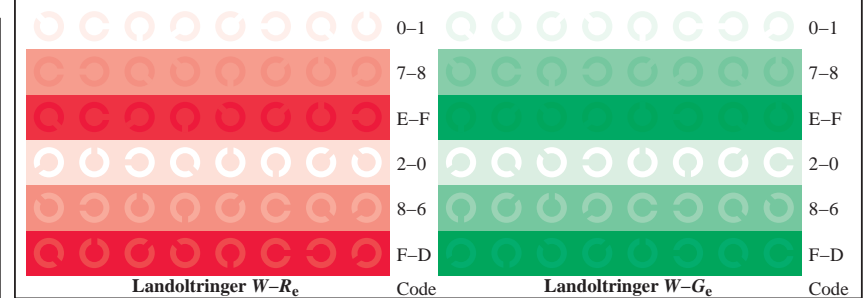
TN851-1, Figur D4We: 16 ekvidistante trinn $W-R_e$; $W-G_e$; $W-B_e$; $W-N$; $rgb/cmy0 \rightarrow rgb_e$ setrgbcolor



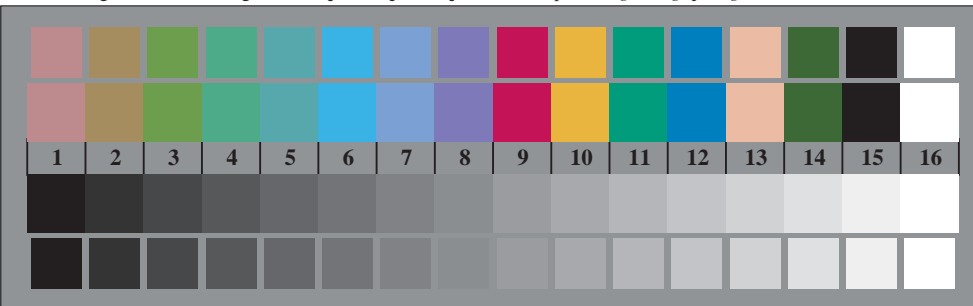
TN851-3, Figur D5We: Skrift Landoltringer N ; R_e ; G_e ; B_e ; Z ; PS operator $rgb \rightarrow rgb_e$ setrgbcolor



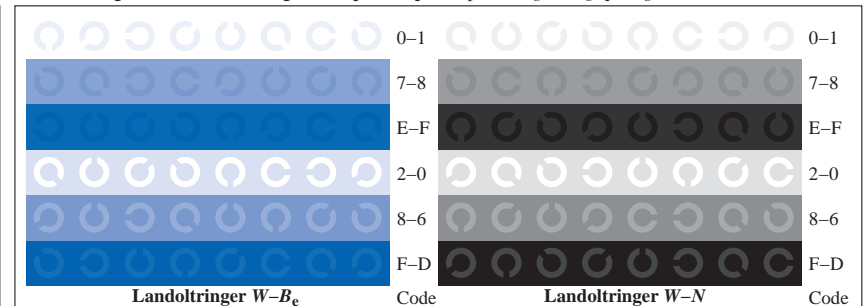
TN850-5, Figur D2We: radielt gitter $W-R_e$; $W-G_e$; $W-B_e$; $W-N$; PS operator $rgb \rightarrow rgb_e$ setrgbcolor



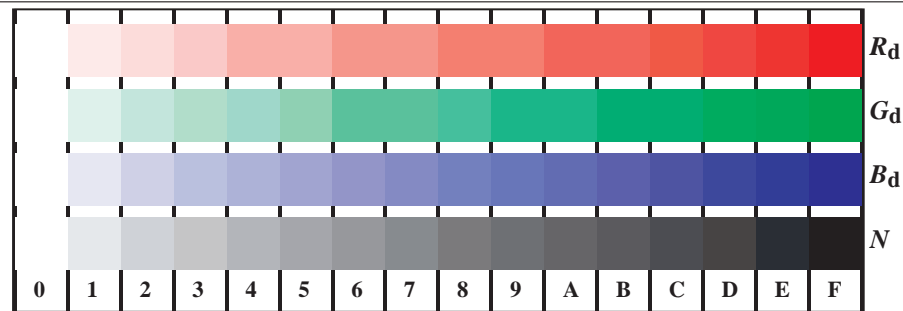
TN851-5, Figur D6We: Landoltringer $W-R_e$; $W-G_e$; PS operator $rgb \rightarrow rgb_e$ setrgbcolor



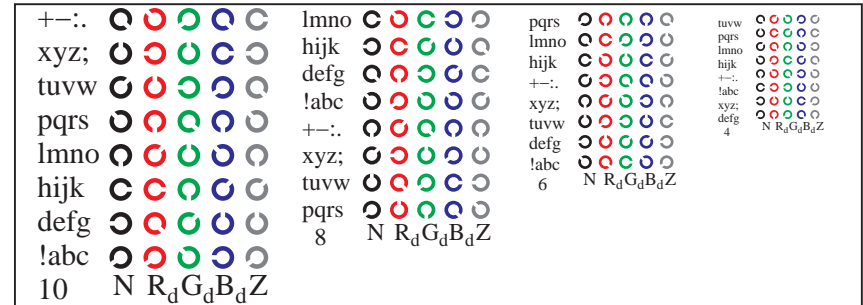
TN850-7, Figur D3We: 14 CIE-prøvefarger og 2 + 16 gråtrinn (sf); $rgb/cmy0 \rightarrow rgb_e$ setrgbcolor



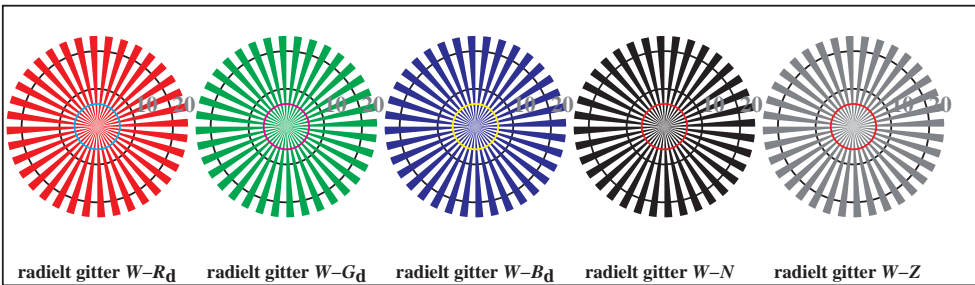
TN851-7, Figur D7We: Landoltringer $W-B_e$; $W-N$; PS operator $rgb \rightarrow rgb_e$ setrgbcolor



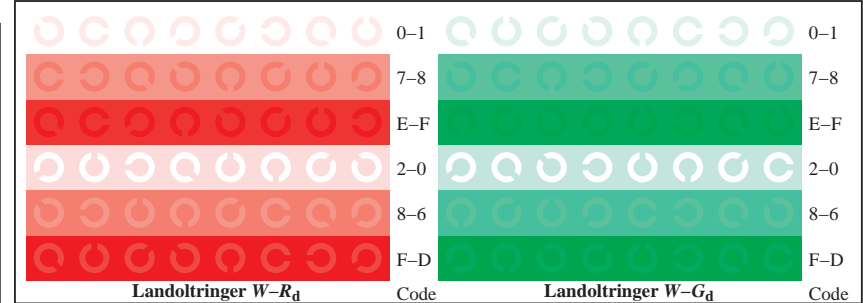
TN851-1, Figur D4Wdd: 16 ekvidistante trinn $W-R_d$; $W-G_d$; $W-B_d$; $W-N$; $rgb/cmy0 \rightarrow rgb_{dd}$ *setrgbcolor*



TN851-3, Figur D5Wdd: Skrift Landoltringer N ; R_d ; G_d ; B_d ; Z ; PS operator $rgb \rightarrow rgb_{dd}$ *setrgbcolor*



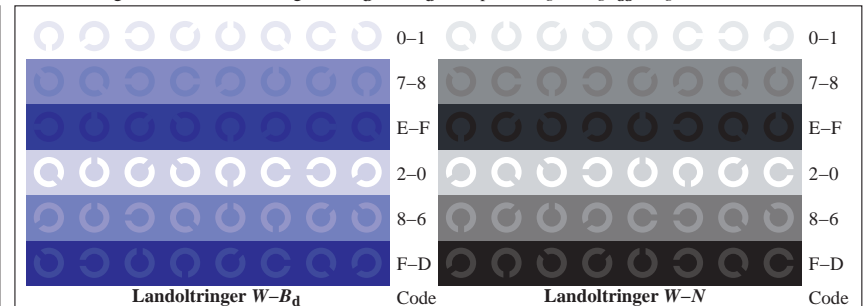
TN850-5, Figur D2Wdd: radielt gitter $W-R_d$; $W-G_d$; $W-B_d$; $W-N$; PS operator $rgb \rightarrow rgb_{dd}$ *setrgbcolor*



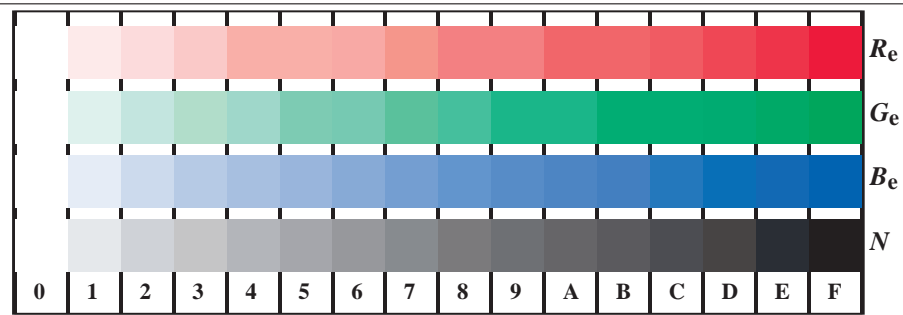
TN851-3, Figur D5Wdd: Landoltringer $W-R_d$; $W-G_d$; PS operator $rgb \rightarrow rgb_{dd}$ *setrgbcolor*



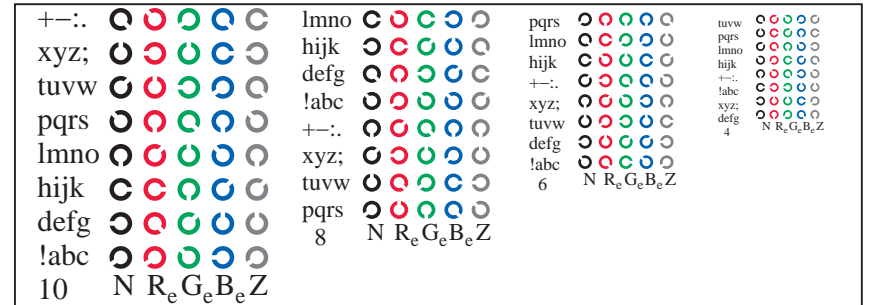
TN850-7, Figur D3Wdd: 14 CIE-prøvefarger og 2 + 16 gråtrinn (sf); $rgb/cmy0 \rightarrow rgb_{dd}$ *setrgbcolor*



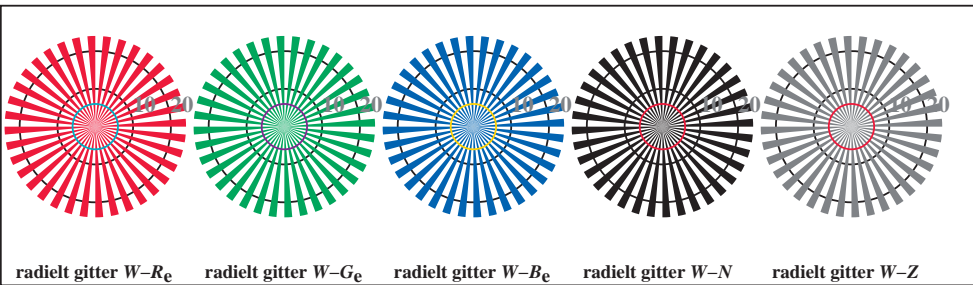
TN851-7, Figur D7Wdd: Landoltringer $W-B_d$; $W-N$; PS operator $rgb \rightarrow rgb_{dd}$ *setrgbcolor*



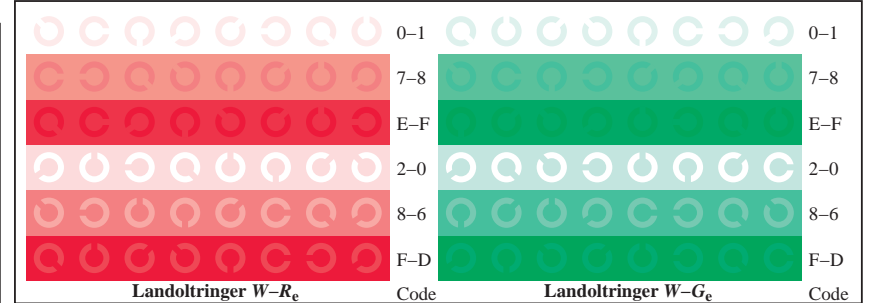
TN851-1, Figur D4Wde: 16 ekvidistante trinn $W-R_e$; $W-G_e$; $W-B_e$; $W-N$; $rgb/cmy0 \rightarrow rgb_{de}$ setrgbcolor



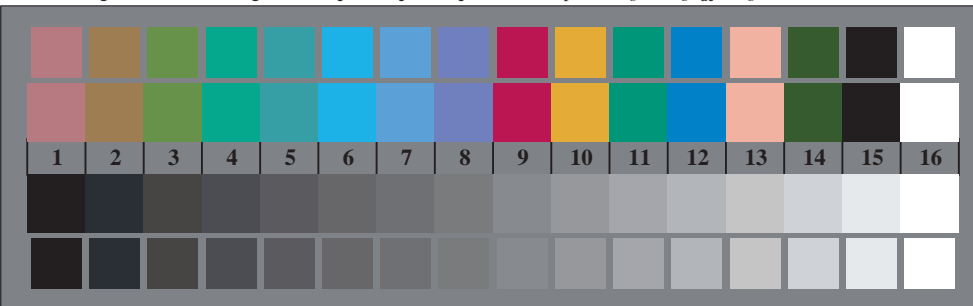
TN851-3, Figur D5Wde: Skrift Landoltringer N ; R_e ; G_e ; B_e ; Z ; PS operator $rgb \rightarrow rgb_{de}$ setrgbcolor



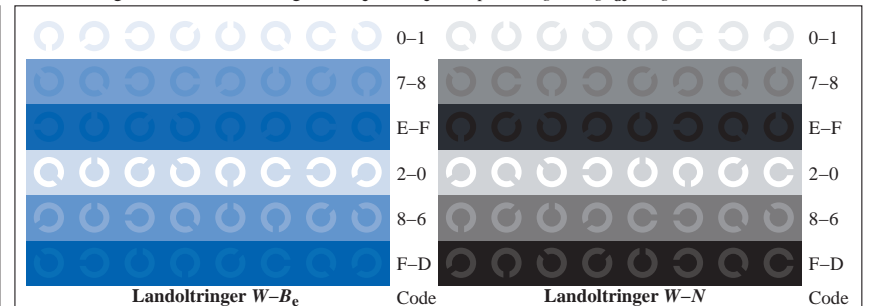
TN850-5, Figur D2Wde: radielt gitter $W-R_e$; $W-G_e$; $W-B_e$; $W-N$; PS operator $rgb \rightarrow rgb_{de}$ setrgbcolor



TN851-5, Figur D6Wde: Landoltringer $W-R_e$; $W-G_e$; PS operator $rgb \rightarrow rgb_{de}$ setrgbcolor



TN850-7, Figur D3Wde: 14 CIE-prøvefarger og 2 + 16 gråtrinn (sf); $rgb/cmy0 \rightarrow rgb_{de}$ setrgbcolor



TN851-7, Figur D7Wde: Landoltringer $W-B_e$; $W-N$; PS operator $rgb \rightarrow rgb_{de}$ setrgbcolor