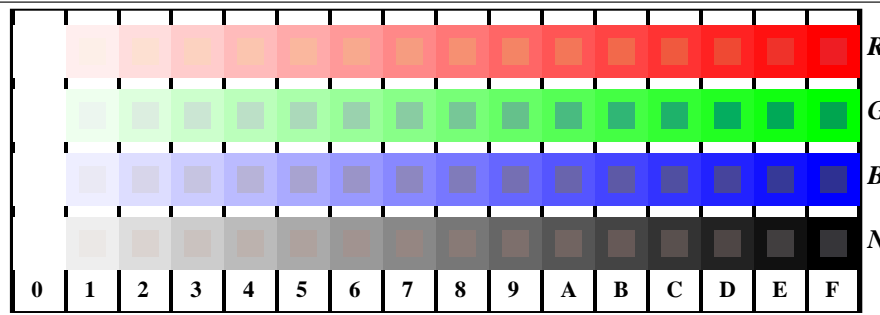


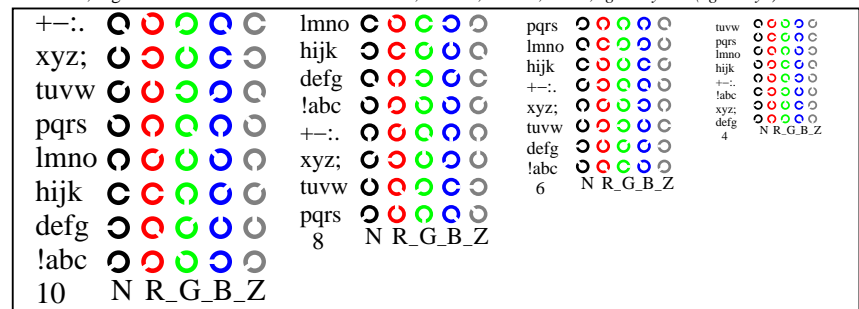
se lignende filer: <http://130.149.60.45/~farbmetrik/TN84/TN84.HTM>  
teknisk informasjon: <http://www.ps.bam.de> eller <http://130.149.60.45/~farbmetrik>

TUB registrering: 20150701-TN84/TN84L0FP.PDF /.PS  
anvendelse for måling av offsettrykk output

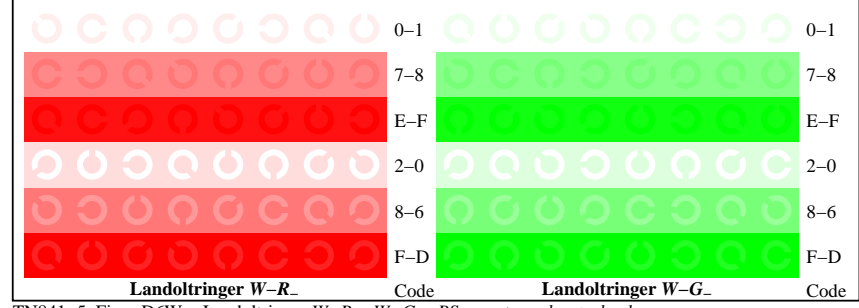
TUB-material: code=rh4ta



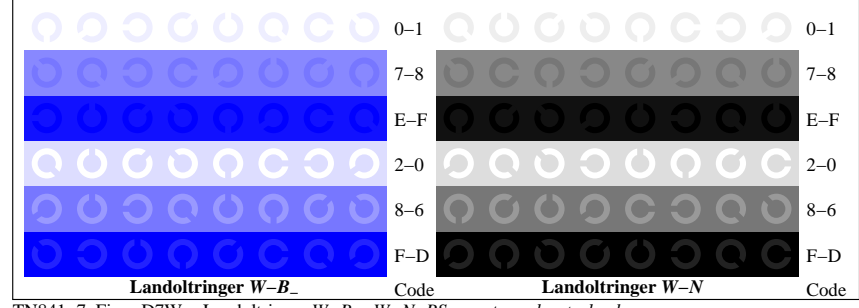
TN841-1, Figur D4W-: 16 ekvidistante trinn W-R\_; W-G\_; W-B\_; W-N; rgb/cmyk set(rgb/cmyk)color



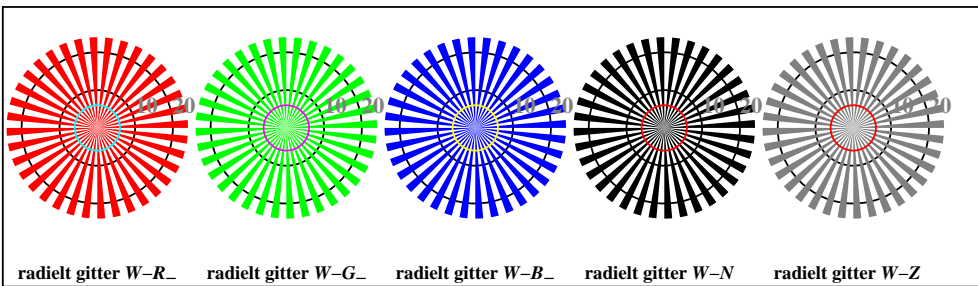
TN841-3, Figur D5W-: Skrift Landoltringer N; R\_; G\_; B\_; Z; PS operator rgb->rgb\_setrgbcolor



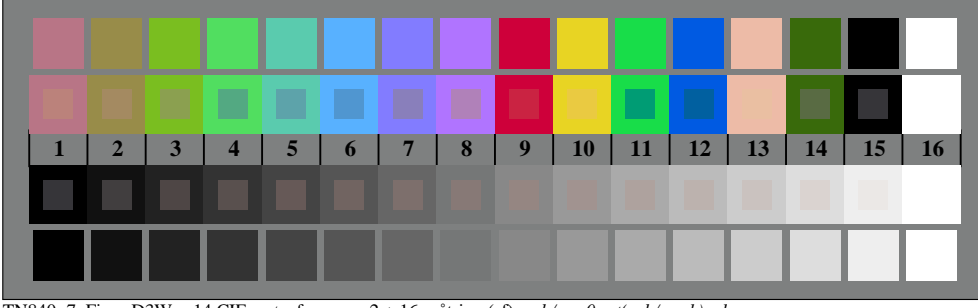
TN841-5, Figur D6W-: Landoltringer W-R\_; W-G\_; PS operator rgb\_setrgbcolor



TN841-7, Figur D7W-: Landoltringer W-B\_; W-N; PS operator rgb\_setrgbcolor



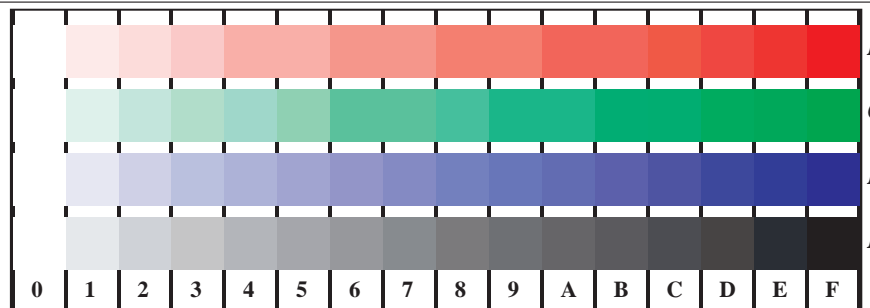
TN840-5, Figur D2W-: radielt gitter W-R\_; W-G\_; W-B\_; W-N; PS operator rgb->rgb\_setrgbcolor



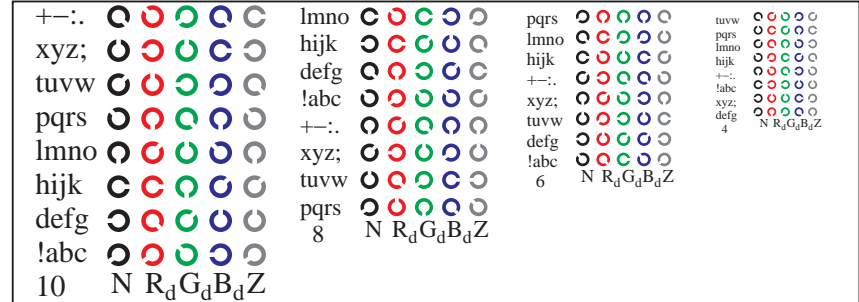
TN840-7, Figur D3W-: 14 CIE-prøvefarger og 2 + 16 gråtrinn (sf); rgb/cmyk0 set(rgb/cmyk)color

se lignende filer: <http://130.149.60.45/~farbmetrik/TN84/TN84.HTM>  
teknisk informasjon: <http://www.ps.bam.de> eller <http://130.149.60.45/~farbmetrik>

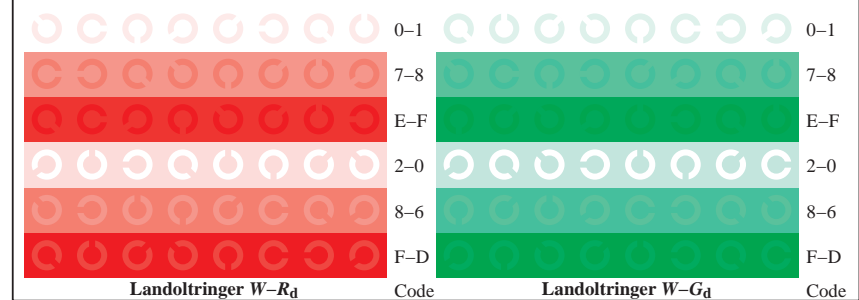
TUB registrering: 20150701-TN84/TN84L0FP.PDF /.PS  
anvendelse for måling av offsettrykk output, separasjoncmyn6\* (CMYK)  
TUB-material: code=rh4ta



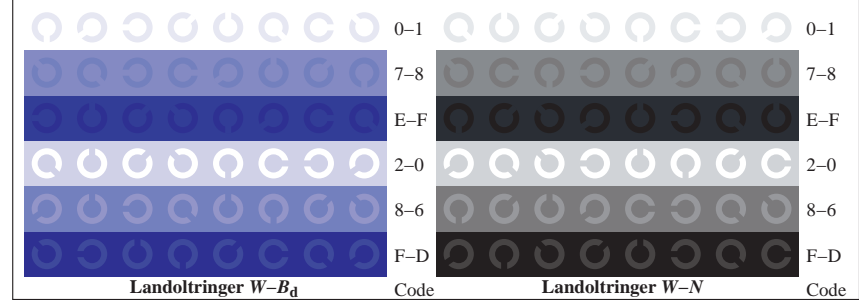
TN841-1, Figur D4Wdd: 16 ekvidistante trinn W-R<sub>d</sub>; W-G<sub>d</sub>; W-B<sub>d</sub>; W-N; rgb/cmy0->rgb<sub>dd</sub> setrgbcolor



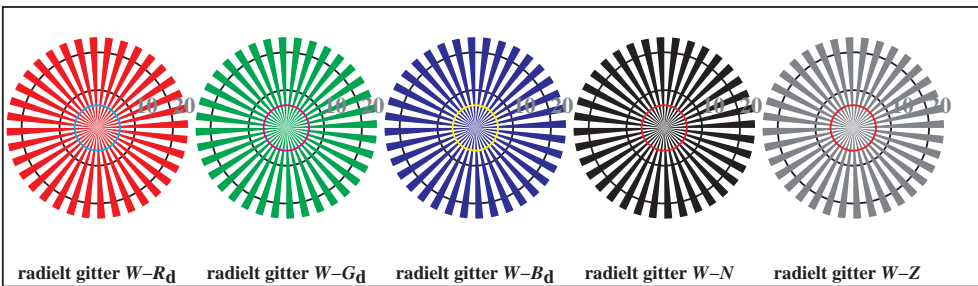
TN841-3, Figur D5Wdd: Skrift Landoltringer N; R<sub>d</sub>; G<sub>d</sub>; B<sub>d</sub>; Z; PS operator rgb->rgb<sub>dd</sub> setrgbcolor



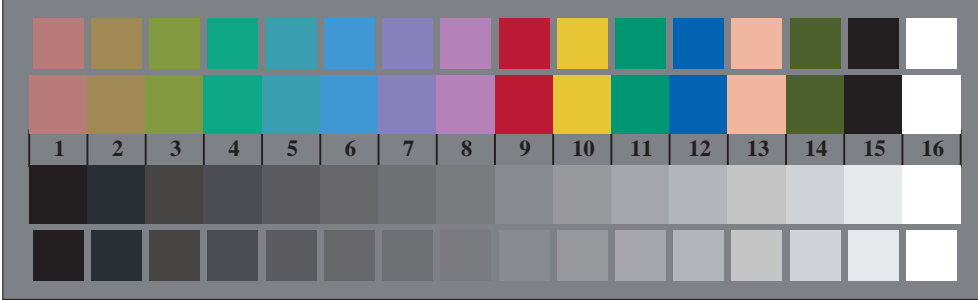
TN841-5, Figur D6Wdd: Landoltringer W-R<sub>d</sub>; W-G<sub>d</sub>; PS operator rgb->rgb<sub>dd</sub> setrgbcolor



TN841-7, Figur D7Wdd: Landoltringer W-B<sub>d</sub>; W-N; PS operator rgb->rgb<sub>dd</sub> setrgbcolor



TN840-5, Figur D2Wdd: radielt gitter W-R<sub>d</sub>; W-G<sub>d</sub>; W-B<sub>d</sub>; W-N; PS operator rgb->rgb<sub>dd</sub> setrgbcolor

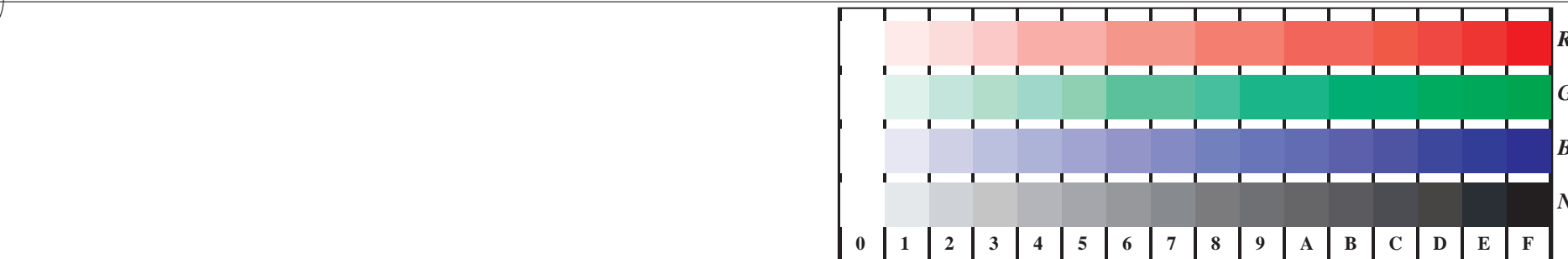


TN840-7, Figur D3Wdd: 14 CIE-prøvefarger og 2 + 16 gråtrinn (sf); rgb/cmy0->rgb<sub>dd</sub> setrgbcolor

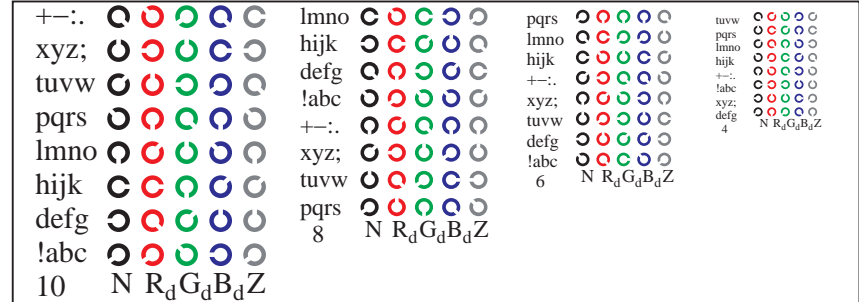


se lignende filer: <http://130.149.60.45/~farbmetrik/TN84/TN84.HTM>  
 teknisk informasjon: <http://www.ps.bam.de> eller <http://130.149.60.45/~farbmetrik>

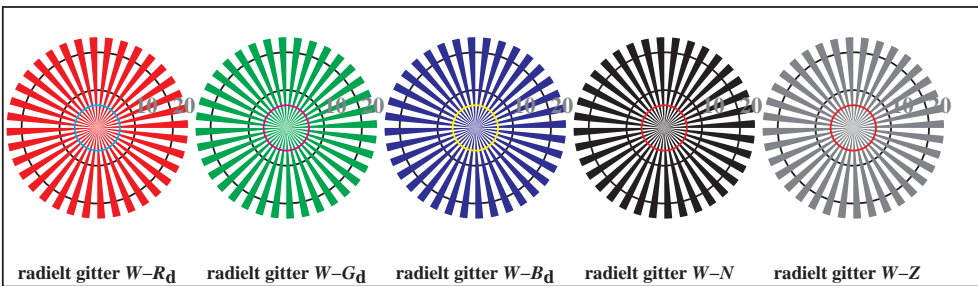
TUB registrering: 20150701-TN84/TN84L0FP.PDF /.PS  
 anvendelse for måling av offsettrykk output, separasjoncmyn6\* (CMYK)  
 TUB-material: code=rh4ta



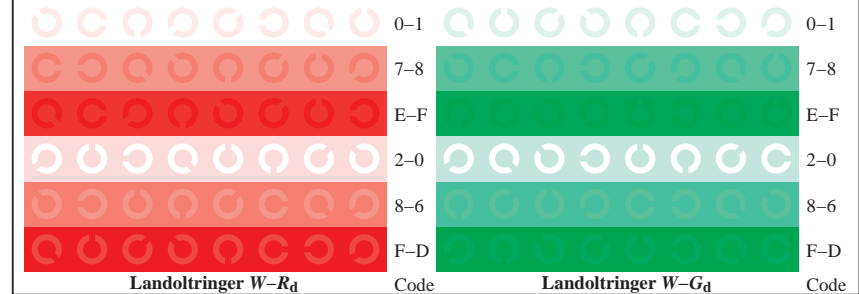
TN841-1, Figur D4Wdd: 16 ekvidistante trinn  $W-R_d$ ;  $W-G_d$ ;  $W-B_d$ ;  $W-N$ ;  $rgb/cmy0 \rightarrow rgb_{dd}$  setrgbcolor



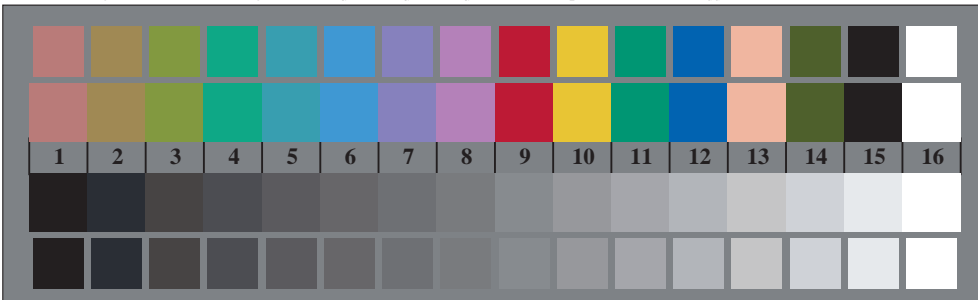
TN841-3, Figur D5Wdd: Skrift Landoltringer  $N$ ;  $R_d$ ;  $G_d$ ;  $B_d$ ;  $Z$ ; PS operator  $rgb \rightarrow rgb_{dd}$  setrgbcolor



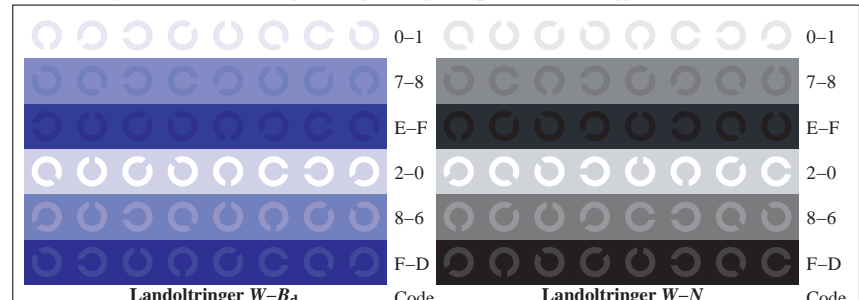
TN840-5, Figur D2Wdd: radielt gitter  $W-R_d$ ;  $W-G_d$ ;  $W-B_d$ ;  $W-N$ ; PS operator  $rgb \rightarrow rgb_{dd}$  setrgbcolor



TN841-5, Figur D6Wdd: Landoltringer  $W-R_d$ ;  $W-G_d$ ; PS operator  $rgb \rightarrow rgb_{dd}$  setrgbcolor



TN840-7, Figur D3Wdd: 14 CIE-prøvefarger og 2 + 16 gråtrinn (sf);  $rgb/cmy0 \rightarrow rgb_{dd}$  setrgbcolor



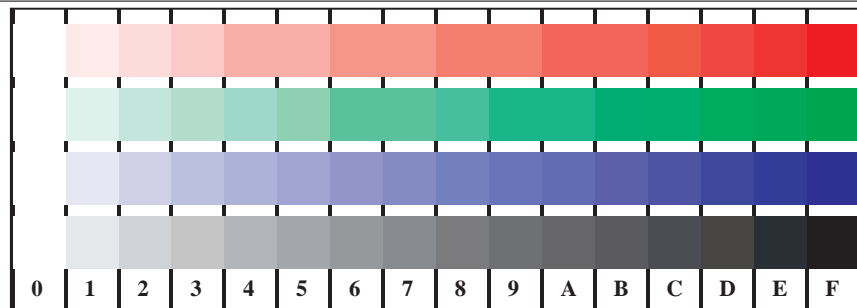
TN841-7, Figur D7Wdd: Landoltringer  $W-B_d$ ;  $W-N$ ; PS operator  $rgb \rightarrow rgb_{dd}$  setrgbcolor



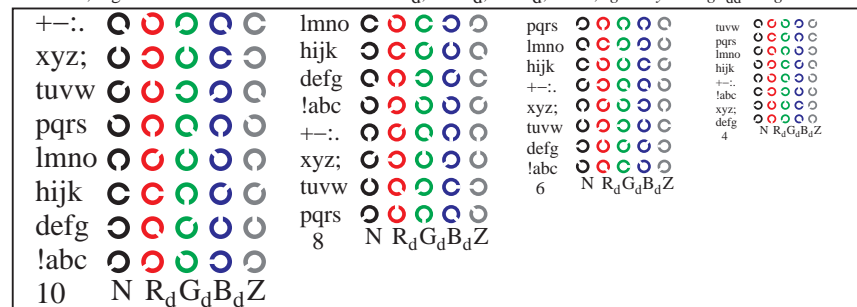
prøveplansje TN84; 4(ISO/IEC 15775 + ISO/IEC TR 24705)input:  $rgb/cmyk \rightarrow rgb_{dd}$   
 kromatisk prøveplansje RGB, 3D=1, de=0,  $cmyk^*$   
 output: 3D-linearisering til  $cmyk^*_{dd}$

se lignende filer: <http://130.149.60.45/~farbmetrik/TN84/TN84.HTM>  
 teknisk informasjon: <http://www.ps.bam.de> eller <http://130.149.60.45/~farbmetrik>

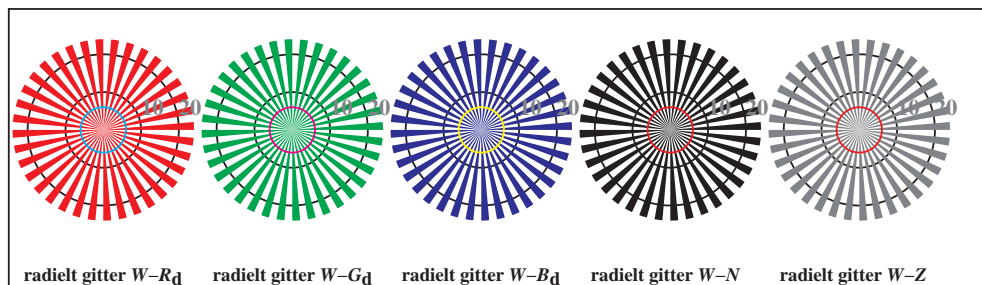
TUB registrering: 20150701-TN84/TN84L0FP.PDF /.PS  
 anvendelse for måling av offsettrykk output, separasjoncmyn6\* (CMYK)  
 TUB-material: code=rh4ta



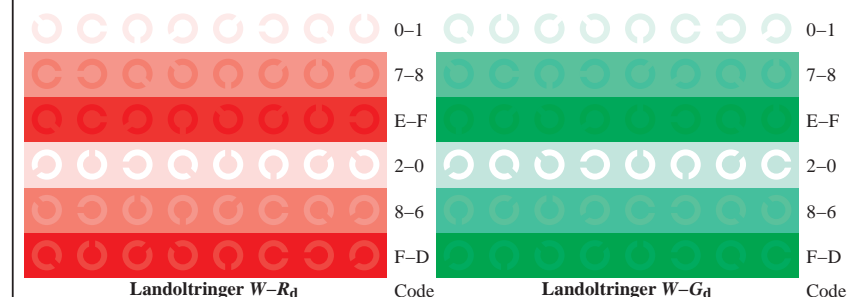
TN841-1, Figur D4Wdd: 16 ekvidistante trinn  $W-R_d$ ;  $W-G_d$ ;  $W-B_d$ ;  $W-N$ ;  $rgb/cmy0 \rightarrow rgb_{dd}$  setrgbcolor



TN841-3, Figur D5Wdd: Skrift Landoltringer  $N$ ;  $R_d$ ;  $G_d$ ;  $B_d$ ;  $Z$ ; PS operator  $rgb \rightarrow rgb_{dd}$  setrgbcolor



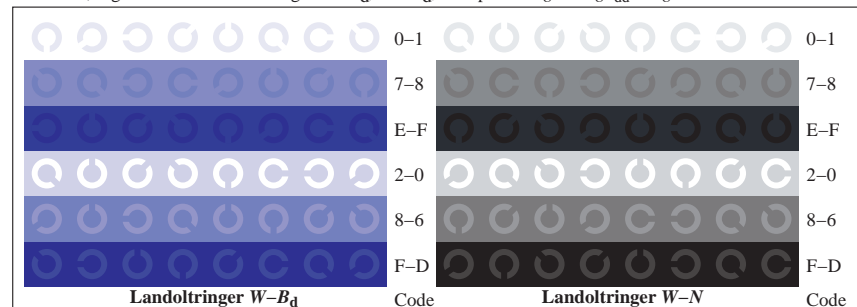
TN840-5, Figur D2Wdd: radielt gitter  $W-R_d$ ;  $W-G_d$ ;  $W-B_d$ ;  $W-N$ ; PS operator  $rgb \rightarrow rgb_{dd}$  setrgbcolor



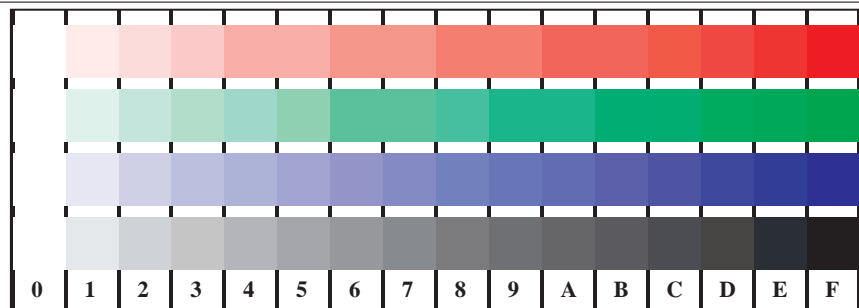
TN841-5, Figur D6Wdd: Landoltringer  $W-R_d$ ;  $W-G_d$ ; PS operator  $rgb \rightarrow rgb_{dd}$  setrgbcolor



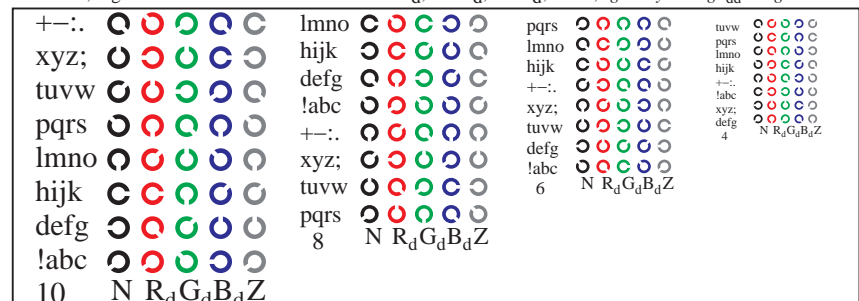
TN840-7, Figur D3Wdd: 14 CIE-prøvefarger og 2 + 16 gråtrinn (sf);  $rgb/cmy0 \rightarrow rgb_{dd}$  setrgbcolor



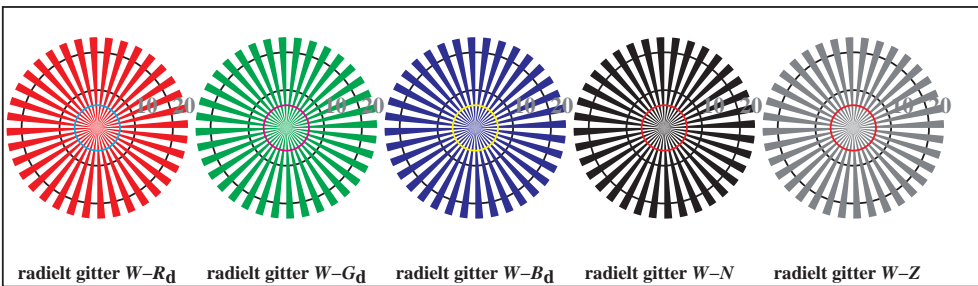
TN841-7, Figur D7Wdd: Landoltringer  $W-B_d$ ;  $W-N$ ; PS operator  $rgb \rightarrow rgb_{dd}$  setrgbcolor



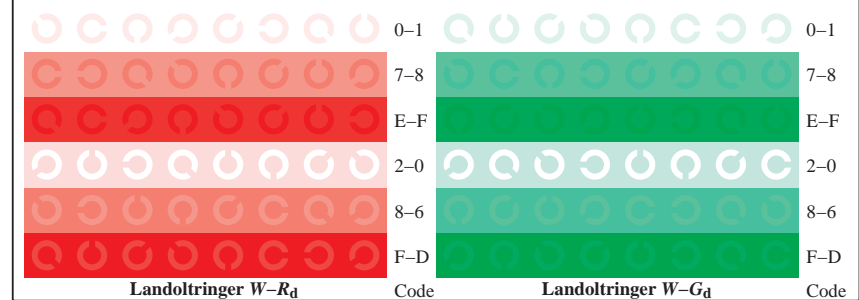
TN841-1, Figur D4Wdd: 16 ekvidistante trinn  $W-R_d$ ;  $W-G_d$ ;  $W-B_d$ ;  $W-N$ ;  $rgb/cmy0 \rightarrow rgb_{dd}$  setrgbcolor



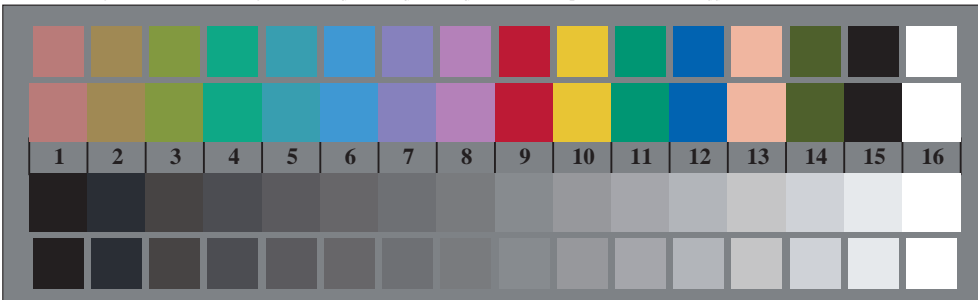
TN841-3, Figur D5Wdd: Skrift Landoltringer  $N$ ;  $R_d$ ;  $G_d$ ;  $B_d$ ;  $Z$ ; PS operator  $rgb \rightarrow rgb_{dd}$  setrgbcolor



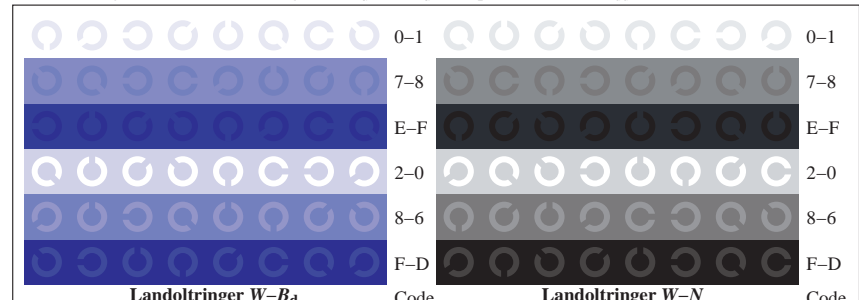
TN840-5, Figur D2Wdd: radielt gitter  $W-R_d$ ;  $W-G_d$ ;  $W-B_d$ ;  $W-N$ ; PS operator  $rgb \rightarrow rgb_{dd}$  setrgbcolor



TN841-5, Figur D6Wdd: Landoltringer  $W-R_d$ ;  $W-G_d$ ; PS operator  $rgb \rightarrow rgb_{dd}$  setrgbcolor



TN840-7, Figur D3Wdd: 14 CIE-prøvefarger og 2 + 16 gråtrinn (sf);  $rgb/cmy0 \rightarrow rgb_{dd}$  setrgbcolor



TN841-7, Figur D7Wdd: Landoltringer  $W-B_d$ ;  $W-N$ ; PS operator  $rgb \rightarrow rgb_{dd}$  setrgbcolor

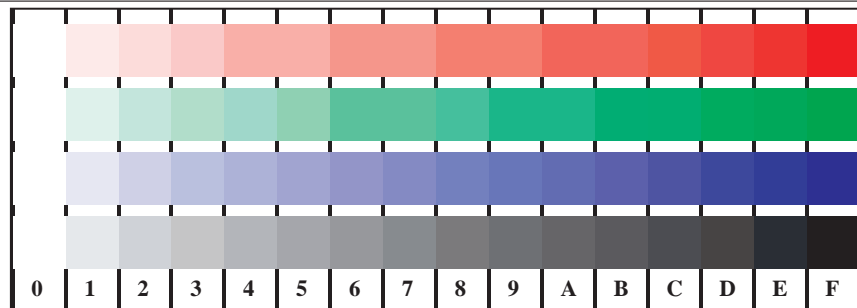
se lignende filer: <http://130.149.60.45/~farbmetrik/TN84/TN84L0FP.PDF> / .PS; 3D-linearisering  
 teknisk informasjon: <http://www.ps.bam.de> eller <http://130.149.60.45/~farbmetrik>



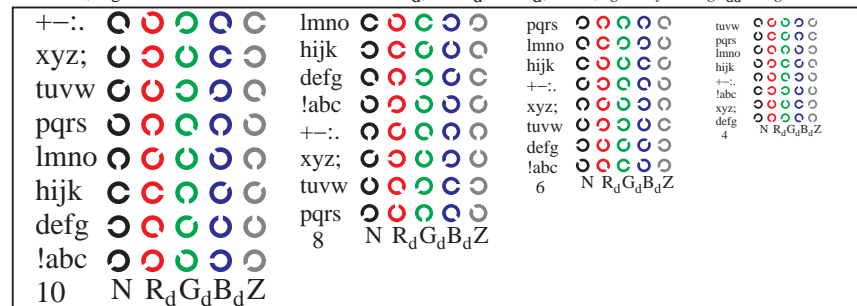
se lignende filer: <http://130.149.60.45/~farbmetrik/TN84/TN84L0FP.PDF> / .PS  
 teknisk informasjon: <http://www.ps.bam.de> eller <http://130.149.60.45/~farbmetrik>

TUB registrering: 20150701-TN84/TN84L0FP.PDF /.PS  
 anvendelse for måling av offsettrykk output, separasjoncmyn6\* (CMYK)

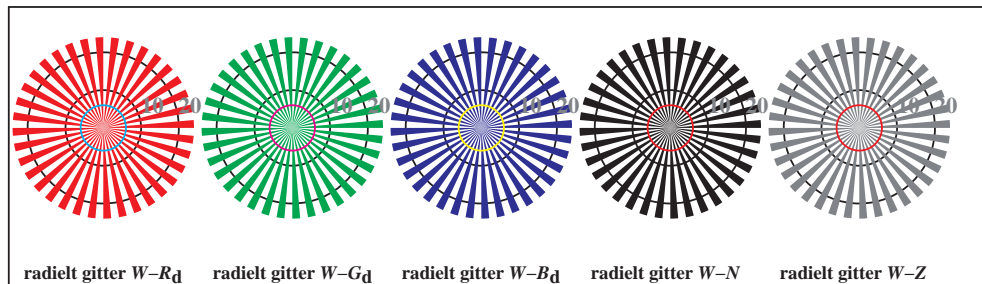
TUB-material: code=rh4ta



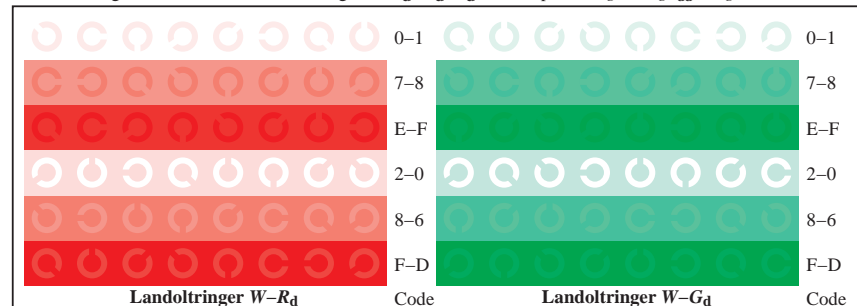
TN841-1, Figur D4Wdd: 16 ekvidistante trinn  $W-R_d$ ;  $W-G_d$ ;  $W-B_d$ ;  $W-N$ ;  $rgb/cmy0 \rightarrow rgb_{dd}$  setrgbcolor



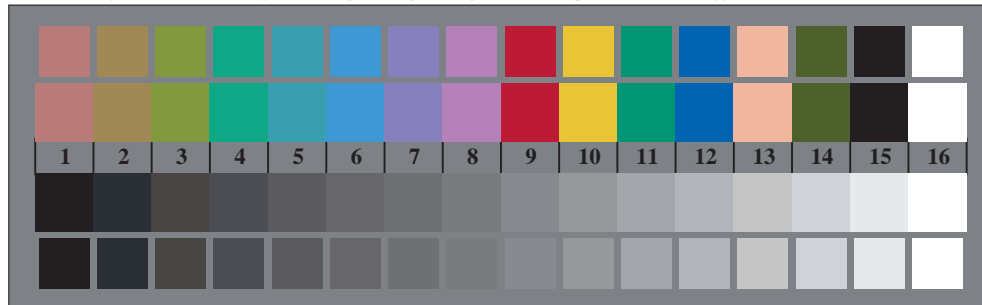
TN841-3, Figur D5Wdd: Skrift Landoltringer  $N$ ;  $R_d$ ;  $G_d$ ;  $B_d$ ;  $Z$ ; PS operator  $rgb \rightarrow rgb_{dd}$  setrgbcolor



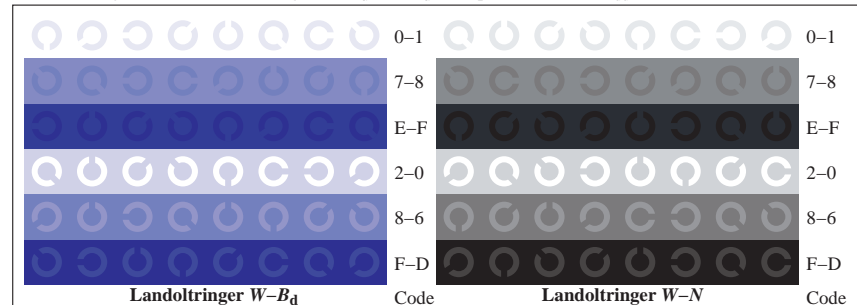
TN840-5, Figur D2Wdd: radielt gitter  $W-R_d$ ;  $W-G_d$ ;  $W-B_d$ ;  $W-N$ ; PS operator  $rgb \rightarrow rgb_{dd}$  setrgbcolor



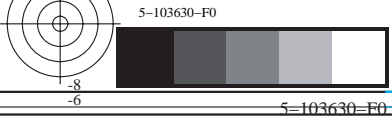
TN841-5, Figur D6Wdd: Landoltringer  $W-R_d$ ;  $W-G_d$ ; PS operator  $rgb \rightarrow rgb_{dd}$  setrgbcolor

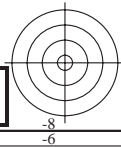
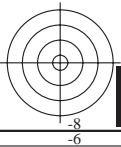
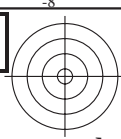


TN840-7, Figur D3Wdd: 14 CIE-prøvefarger og 2 + 16 gråtrinn (sf);  $rgb/cmy0 \rightarrow rgb_{dd}$  setrgbcolor

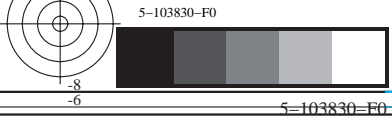


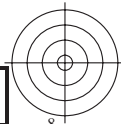
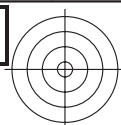
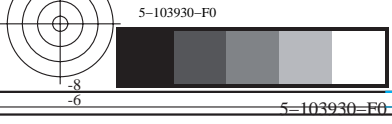
TN841-7, Figur D7Wdd: Landoltringer  $W-B_d$ ;  $W-N$ ; PS operator  $rgb \rightarrow rgb_{dd}$  setrgbcolor





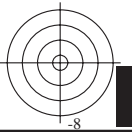
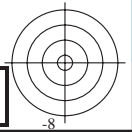
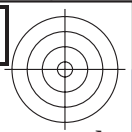
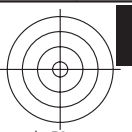
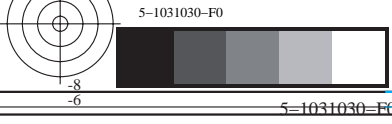


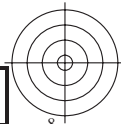
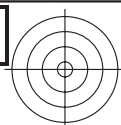


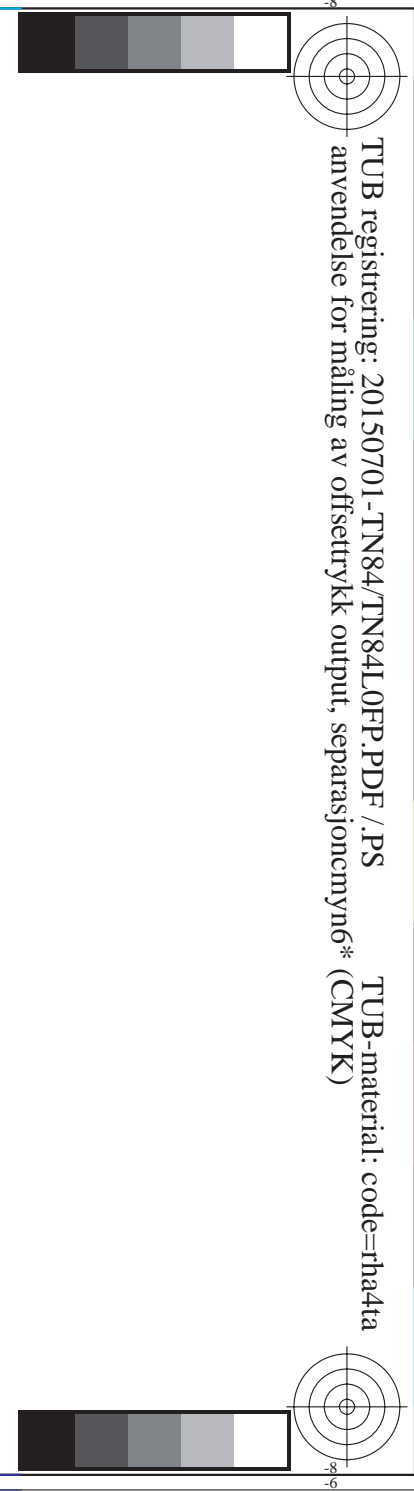
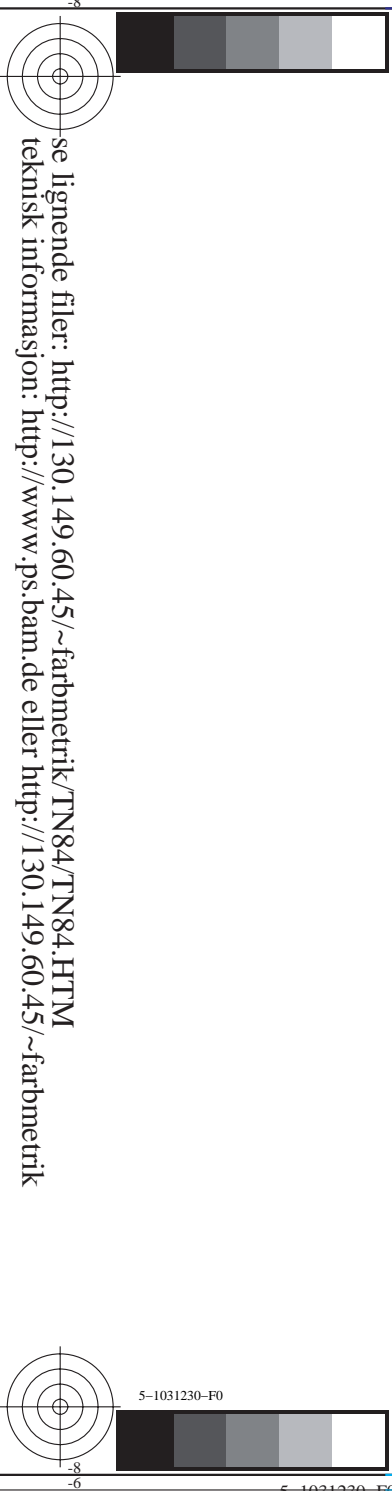


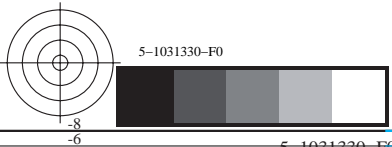
TUB registrering: 20150701-TN84/TN84L0FP.PDF /.PS TUB-material: code=rh4ta  
anvendelse for måling av offsettrykk output, separasjoncmyk6\* (CMYK)

se lignende filer: <http://130.149.60.45/~farbmetrik/TN84/TN84.HTM>  
teknisk informasjon: <http://www.ps.bam.de> eller <http://130.149.60.45/~farbmetrik>

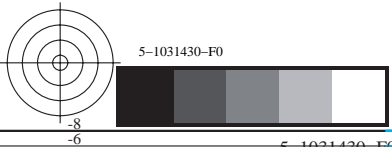


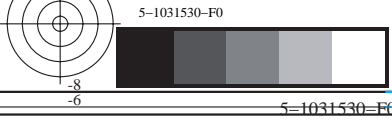


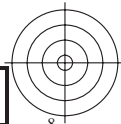
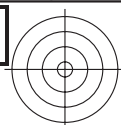


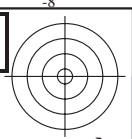
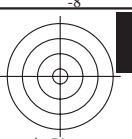
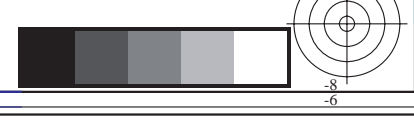
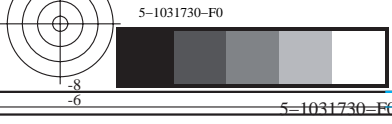


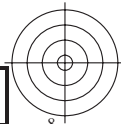
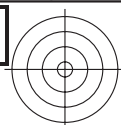












5=1031830=F0



TUB registrering: 20150701-TN84/TN84L0FP.PDF /.PS TUB-material: code=rh4ta  
anvendelse for måling av offsettrykk output, separasjoncmyk6\* (CMYK)

se lignende filer: <http://130.149.60.45/~farbmetrik/TN84/TN84.HTM>  
teknisk informasjon: <http://www.ps.bam.de> eller <http://130.149.60.45/~farbmetrik>

