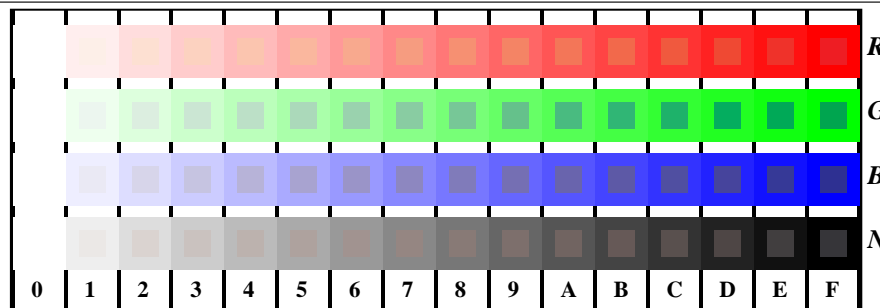


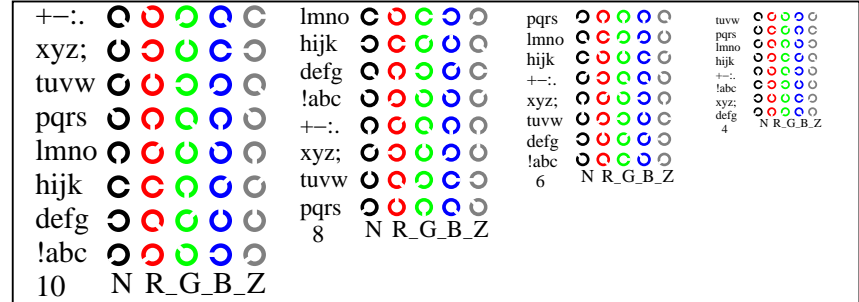
se lignende filer: <http://130.149.60.45/~farbmetrik/TN84/TN84L0FA.TXT> /PS
teknisk informasjon: <http://www.ps.bam.de> eller <http://130.149.60.45/~farbmetrik>

TUB registrering: 20150701-TN84/TN84L0FA.TXT /PS
anvendelse for måling av offsettrykk output

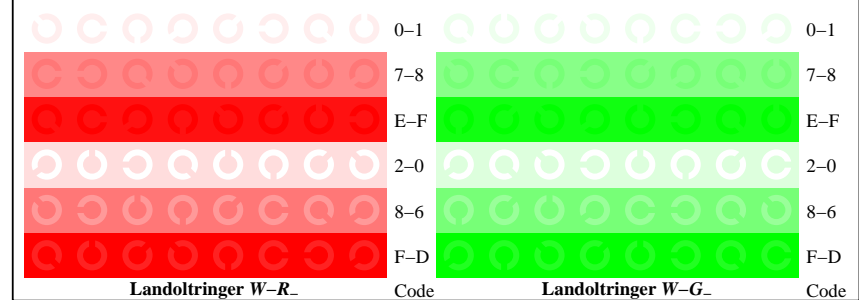
TUB-material: code=rh4ta



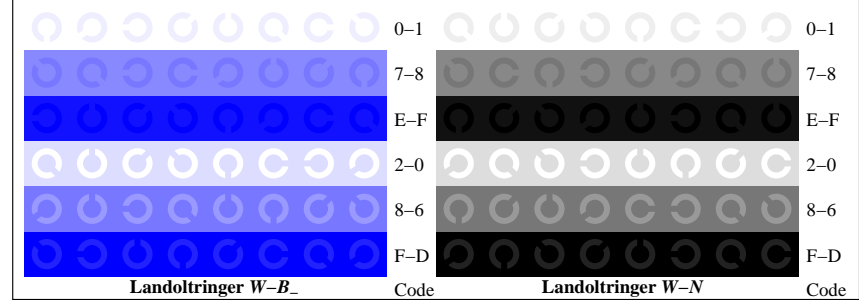
TN841-1, Figur D4W-: 16 ekvidistante trinn W-R_; W-G_; W-B_; W-N; rgb/cmyk set(rgb/cmyk)color



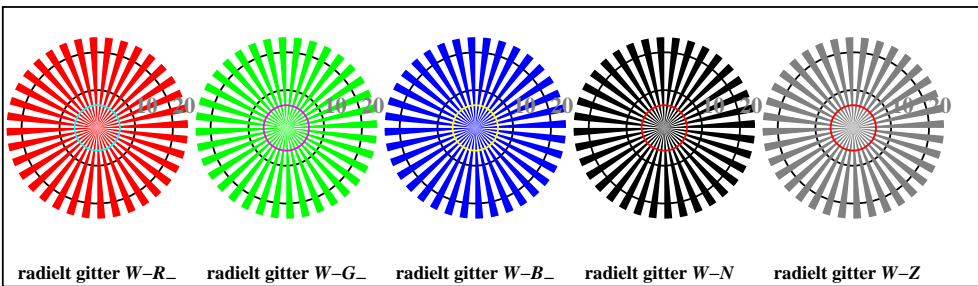
TN841-3, Figur D5W-: Skrift Landoltringer N; R_; G_; B_; Z; PS operator rgb->rgb_setrgbcolor



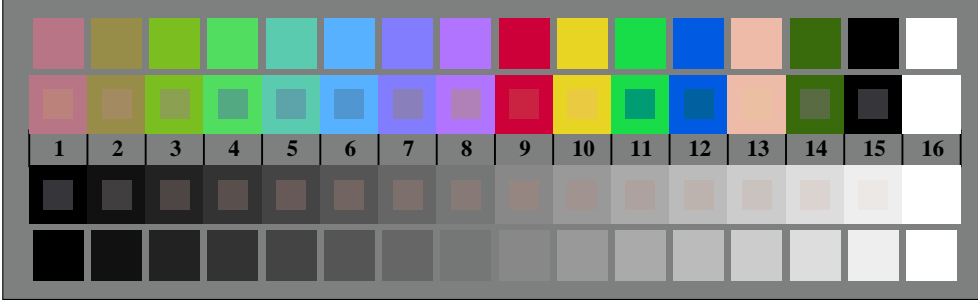
TN841-5, Figur D6W-: Landoltringer W-R_; W-G_; PS operator rgb_setrgbcolor



TN841-7, Figur D7W-: Landoltringer W-B_; W-N; PS operator rgb_setrgbcolor



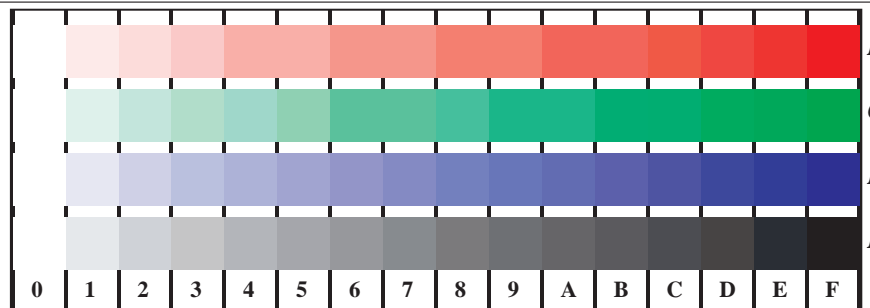
TN840-5, Figur D2W-: radielt gitter W-R_; W-G_; W-B_; W-N; PS operator rgb->rgb_setrgbcolor



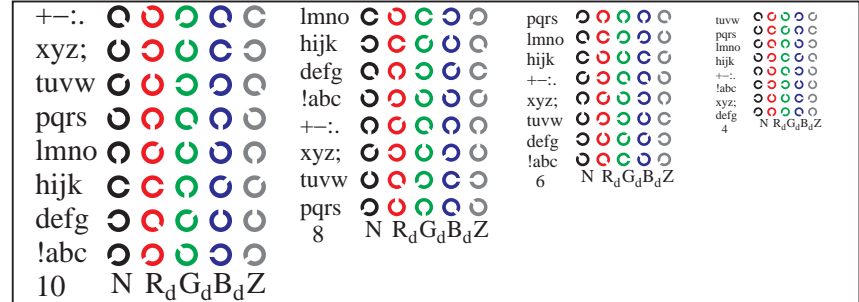
TN840-7, Figur D3W-: 14 CIE-prøvefarger og 2 + 16 gråtrinn (sf); rgb/cmyk0 set(rgb/cmyk)color

se lignende filer: <http://130.149.60.45/~farbmetrik/TN84/TN84L0FA.TXT> / .PS
teknisk informasjon: <http://www.ps.bam.de> eller <http://130.149.60.45/~farbmetrik>

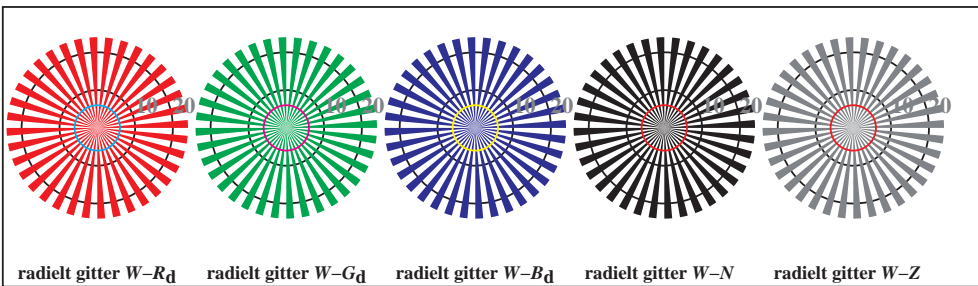
TUB registrering: 20150701-TN84/TN84L0FA.TXT /.PS
anvendelse for måling av offsettrykk output, separasjoncmyk* (CMYK)
TUB-material: code=rh4ta



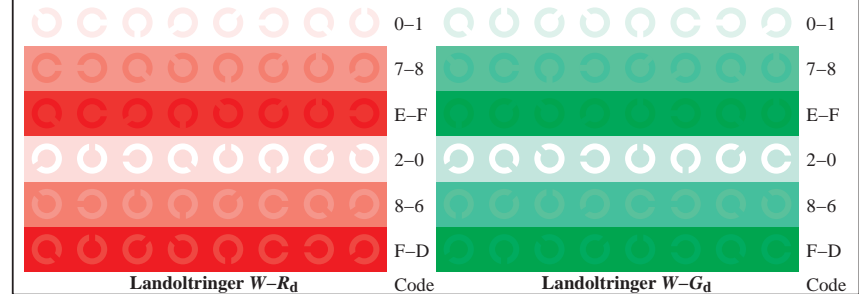
TN841-1, Figur D4Wdd: 16 ekvidistante trinn $W-R_d$; $W-G_d$; $W-B_d$; $W-N$; $rgb/cmy0 \rightarrow rgb_{dd}$ setrgbcolor



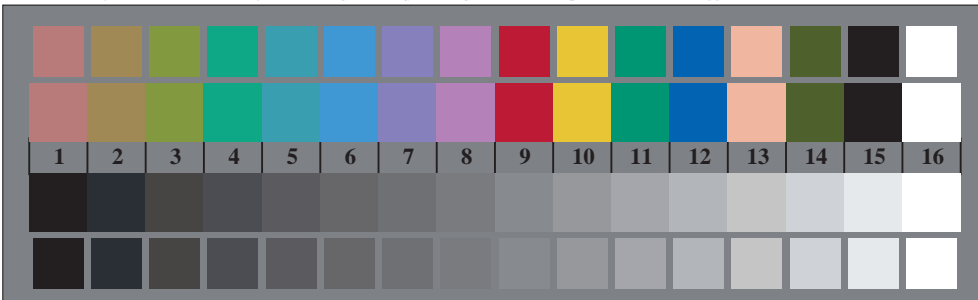
TN841-3, Figur D5Wdd: Skrift Landoltringer N ; R_d ; G_d ; B_d ; Z ; PS operator $rgb \rightarrow rgb_{dd}$ setrgbcolor



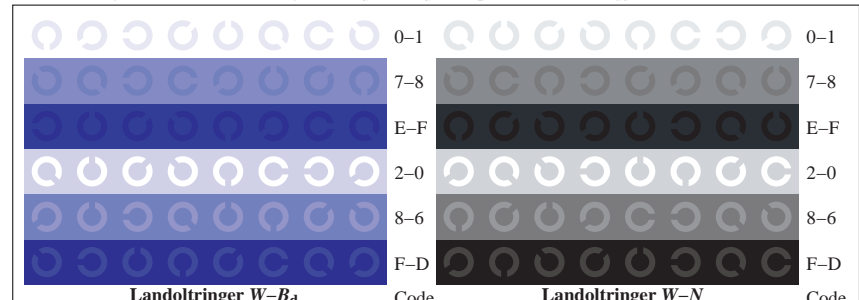
TN840-5, Figur D2Wdd: radielt gitter $W-R_d$; $W-G_d$; $W-B_d$; $W-N$; PS operator $rgb \rightarrow rgb_{dd}$ setrgbcolor



TN841-5, Figur D6Wdd: Landoltringer $W-R_d$; $W-G_d$; PS operator $rgb \rightarrow rgb_{dd}$ setrgbcolor



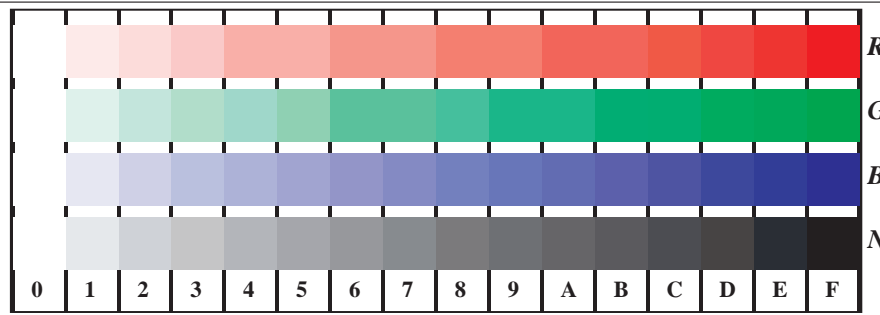
TN840-7, Figur D3Wdd: 14 CIE-prøvefarger og 2 + 16 gråtrinn (sf); $rgb/cmy0 \rightarrow rgb_{dd}$ setrgbcolor



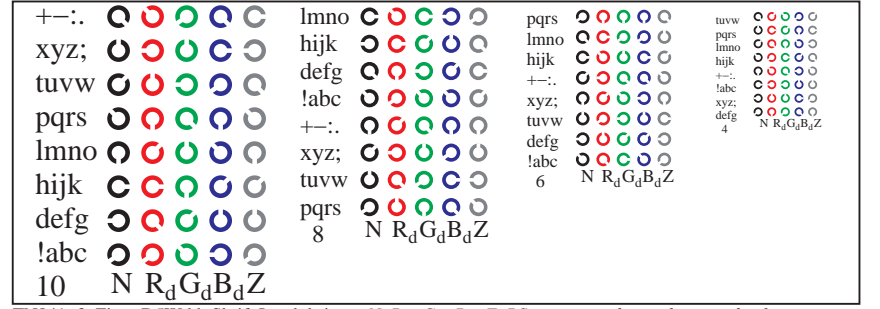
TN841-7, Figur D7Wdd: Landoltringer $W-B_d$; $W-N$; PS operator $rgb \rightarrow rgb_{dd}$ setrgbcolor

se lignende filer: <http://130.149.60.45/~farbmetrik/TN84/TN84L0FA.TXT> / .PS
 teknisk informasjon: <http://www.ps.bam.de> eller <http://130.149.60.45/~farbmetrik>

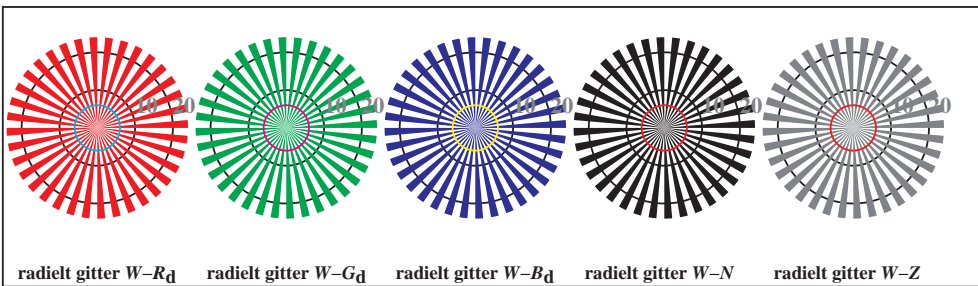
TUB registrering: 20150701-TN84/TN84L0FA.TXT /.PS
 anvendelse for måling av offsettrykk output, separasjoncmyk6* (CMYK)
 TUB-material: code=rh4ta



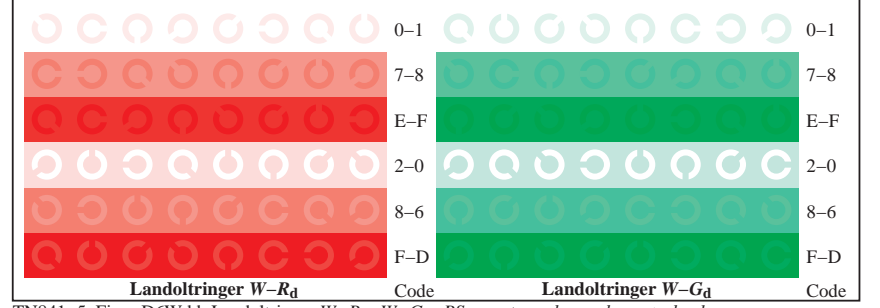
TN841-1, Figur D4Wdd: 16 ekvidistante trinn $W-R_d$; $W-G_d$; $W-B_d$; $W-N$; $rgb/cmy0 \rightarrow rgb_{dd}$ setrgbcolor



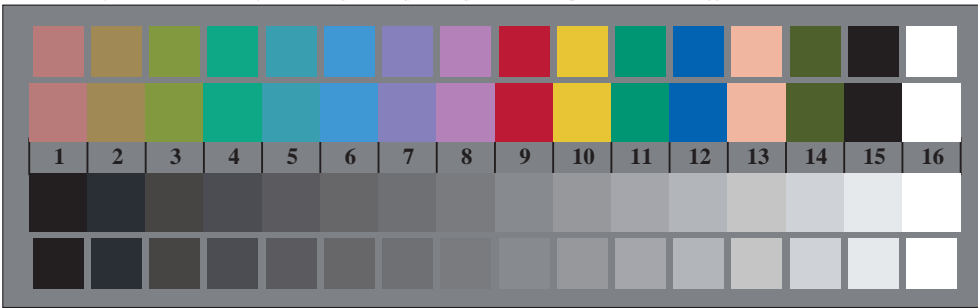
TN841-3, Figur D5Wdd: Skrift Landoltringer N ; R_d ; G_d ; B_d ; Z ; PS operator $rgb \rightarrow rgb_{dd}$ setrgbcolor



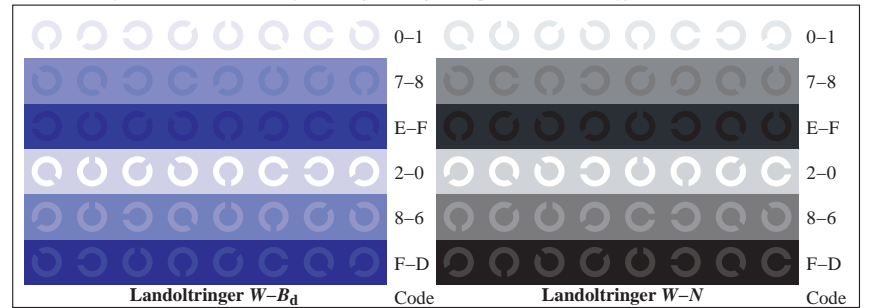
TN840-5, Figur D2Wdd: radielt gitter $W-R_d$; $W-G_d$; $W-B_d$; $W-N$; PS operator $rgb \rightarrow rgb_{dd}$ setrgbcolor



TN841-5, Figur D6Wdd: Landoltringer $W-R_d$; $W-G_d$; PS operator $rgb \rightarrow rgb_{dd}$ setrgbcolor



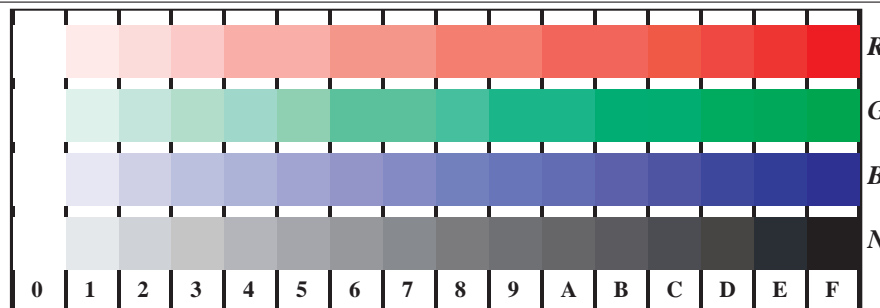
TN840-7, Figur D3Wdd: 14 CIE-prøvefarger og 2 + 16 gråtrinn (sf); $rgb/cmy0 \rightarrow rgb_{dd}$ setrgbcolor



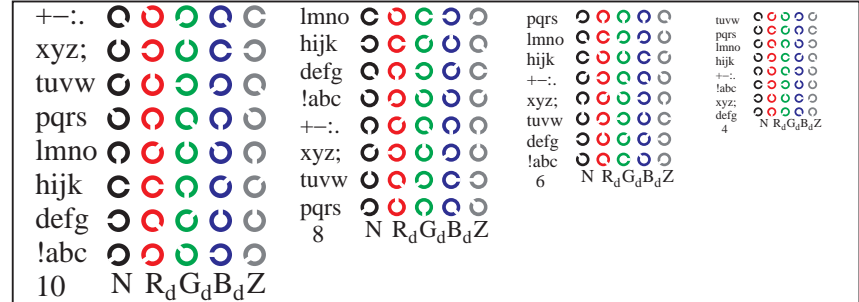
TN841-7, Figur D7Wdd: Landoltringer $W-B_d$; $W-N$; PS operator $rgb \rightarrow rgb_{dd}$ setrgbcolor

se lignende filer: <http://130.149.60.45/~farbmetrik/TN84/TN84L0FA.TXT> / .PS
 teknisk informasjon: <http://www.ps.bam.de> eller <http://130.149.60.45/~farbmetrik>

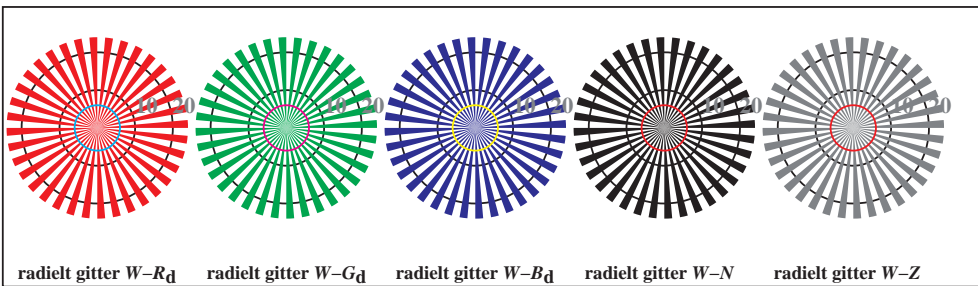
TUB registrering: 20150701-TN84/TN84L0FA.TXT /.PS
 anvendelse for måling av offsettrykk output, separasjoncmyk6* (CMYK)
 TUB-material: code=rh4ta



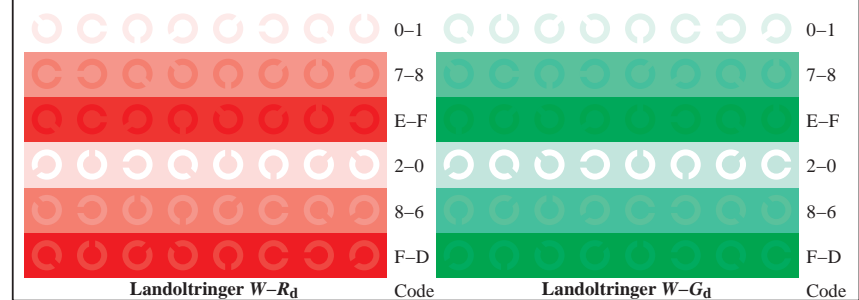
TN841-1, Figur D4Wdd: 16 ekvidistante trinn $W-R_d$; $W-G_d$; $W-B_d$; $W-N$; $rgb/cmy0 \rightarrow rgb_{dd}$ setrgbcolor



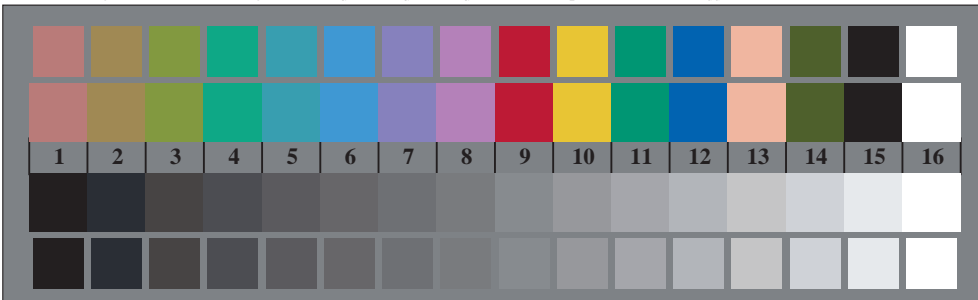
TN841-3, Figur D5Wdd: Skrift Landoltringer N ; R_d ; G_d ; B_d ; Z ; PS operator $rgb \rightarrow rgb_{dd}$ setrgbcolor



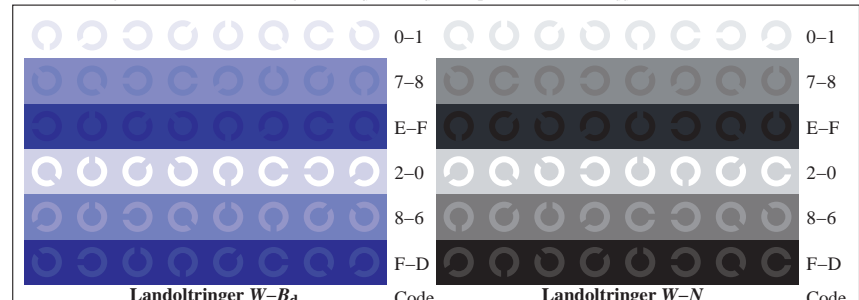
TN840-5, Figur D2Wdd: radielt gitter $W-R_d$; $W-G_d$; $W-B_d$; $W-N$; PS operator $rgb \rightarrow rgb_{dd}$ setrgbcolor



TN841-5, Figur D6Wdd: Landoltringer $W-R_d$; $W-G_d$; PS operator $rgb \rightarrow rgb_{dd}$ setrgbcolor



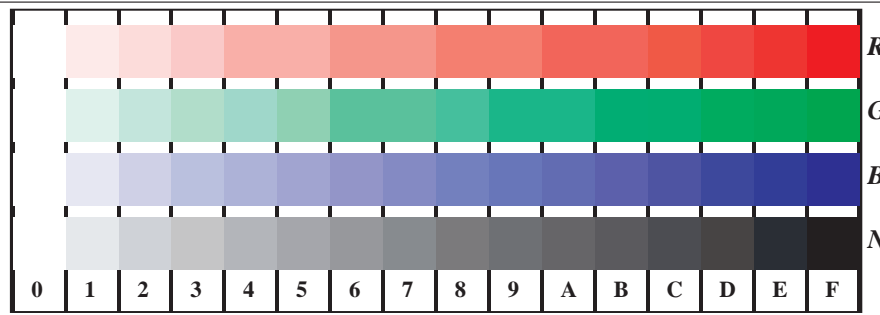
TN840-7, Figur D3Wdd: 14 CIE-prøvefarger og 2 + 16 gråtrinn (sf); $rgb/cmy0 \rightarrow rgb_{dd}$ setrgbcolor



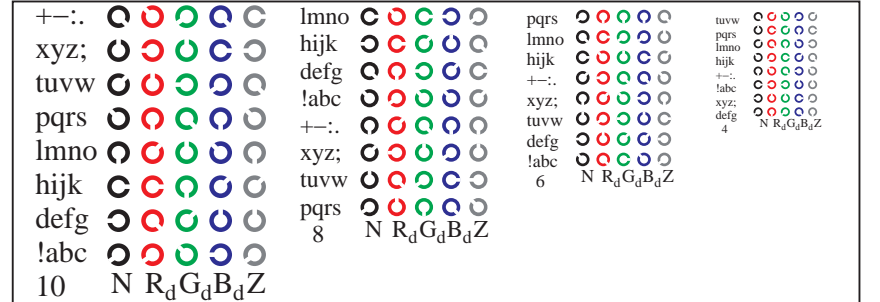
TN841-7, Figur D7Wdd: Landoltringer $W-B_d$; $W-N$; PS operator $rgb \rightarrow rgb_{dd}$ setrgbcolor

se lignende filer: <http://130.149.60.45/~farbmetrik/TN84/TN84L0FA.TXT> / .PS
 teknisk informasjon: <http://www.ps.bam.de> eller <http://130.149.60.45/~farbmetrik>

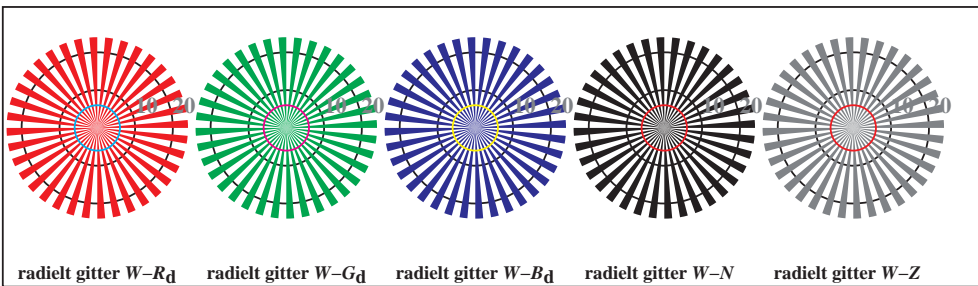
TUB registrering: 20150701-TN84/TN84L0FA.TXT /.PS
 anvendelse for måling av offsettrykk output, separasjoncmyk* (CMYK)
 TUB-material: code=rh4ta



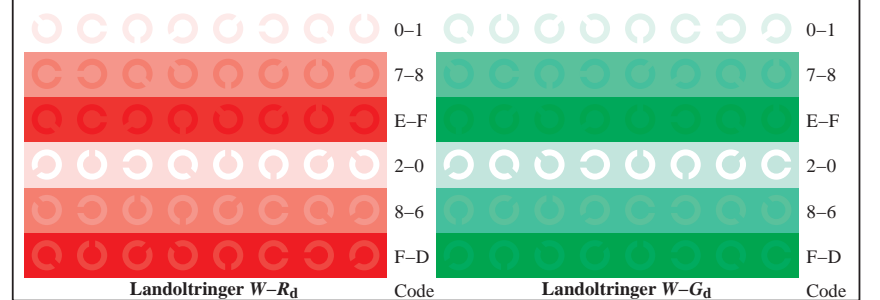
TN841-1, Figur D4Wdd: 16 ekvidistante trinn $W-R_d$; $W-G_d$; $W-B_d$; $W-N$; $rgb/cmy0 \rightarrow rgb_{dd}$ setrgbcolor



TN841-3, Figur D5Wdd: Skrift Landoltringer N ; R_d ; G_d ; B_d ; Z ; PS operator $rgb \rightarrow rgb_{dd}$ setrgbcolor



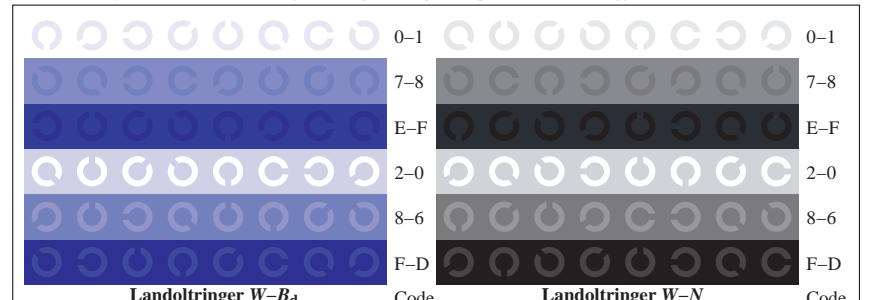
TN840-5, Figur D2Wdd: radielt gitter $W-R_d$; $W-G_d$; $W-B_d$; $W-N$; PS operator $rgb \rightarrow rgb_{dd}$ setrgbcolor



TN841-5, Figur D6Wdd: Landoltringer $W-R_d$; $W-G_d$; PS operator $rgb \rightarrow rgb_{dd}$ setrgbcolor



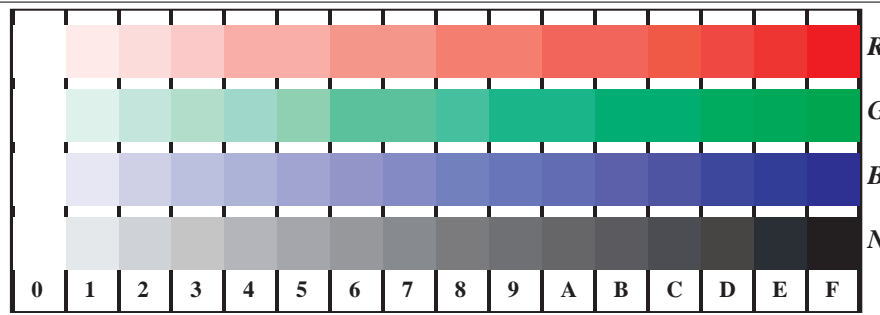
TN840-7, Figur D3Wdd: 14 CIE-prøvefarger og 2 + 16 gråtrinn (sf); $rgb/cmy0 \rightarrow rgb_{dd}$ setrgbcolor



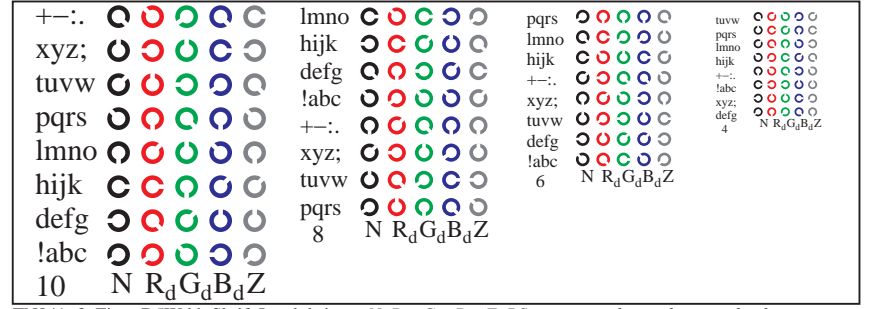
TN841-7, Figur D7Wdd: Landoltringer $W-B_d$; $W-N$; PS operator $rgb \rightarrow rgb_{dd}$ setrgbcolor

se lignende filer: <http://130.149.60.45/~farbmetrik/TN84/TN84L0FA.TXT> / .PS
 teknisk informasjon: <http://www.ps.bam.de> eller <http://130.149.60.45/~farbmetrik>

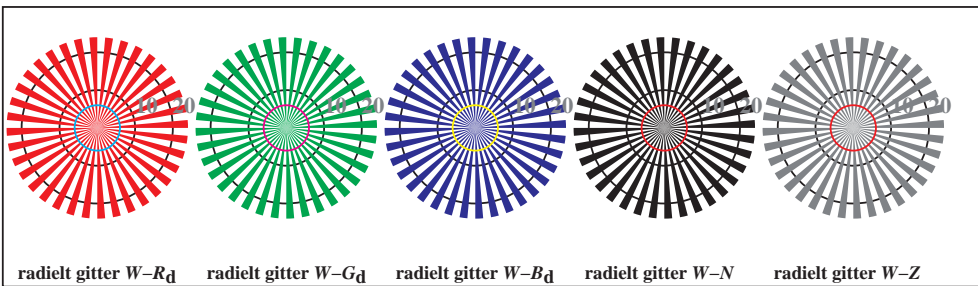
TUB registrering: 20150701-TN84/TN84L0FA.TXT /.PS
 anvendelse for måling av offsettrykk output, separasjoncmyk6* (CMYK)
 TUB-material: code=rh4ta



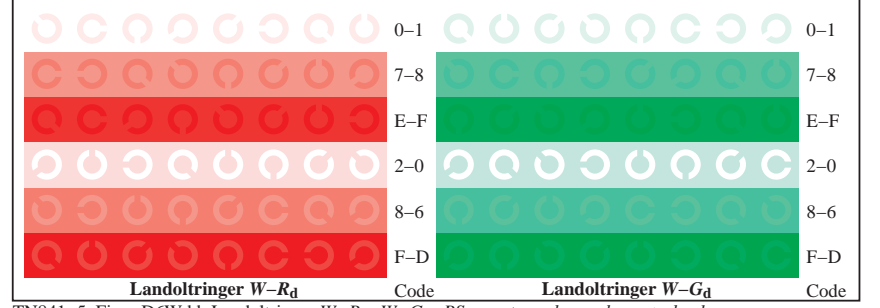
TN841-1, Figur D4Wdd: 16 ekvidistante trinn $W-R_d$; $W-G_d$; $W-B_d$; $W-N$; $rgb/cmy0 \rightarrow rgb_{dd}$ setrgbcolor



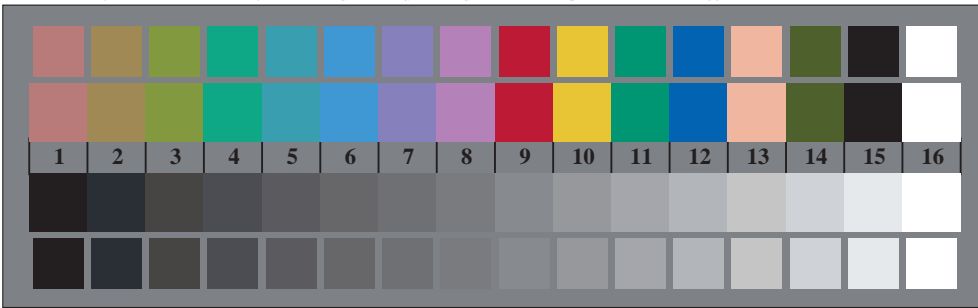
TN841-3, Figur D5Wdd: Skrift Landoltringer N ; R_d ; G_d ; B_d ; Z ; PS operator $rgb \rightarrow rgb_{dd}$ setrgbcolor



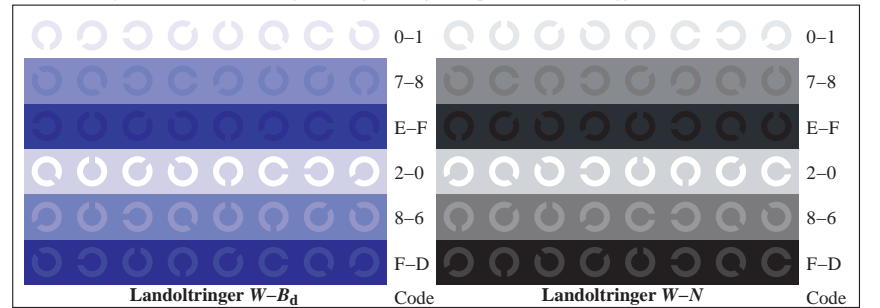
TN840-5, Figur D2Wdd: radielt gitter $W-R_d$; $W-G_d$; $W-B_d$; $W-N$; PS operator $rgb \rightarrow rgb_{dd}$ setrgbcolor



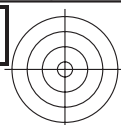
TN841-5, Figur D6Wdd: Landoltringer $W-R_d$; $W-G_d$; PS operator $rgb \rightarrow rgb_{dd}$ setrgbcolor



TN840-7, Figur D3Wdd: 14 CIE-prøvefarger og 2 + 16 gråtrinn (sf); $rgb/cmy0 \rightarrow rgb_{dd}$ setrgbcolor

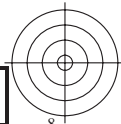


TN841-7, Figur D7Wdd: Landoltringer $W-B_d$; $W-N$; PS operator $rgb \rightarrow rgb_{dd}$ setrgbcolor



TUB registrering: 20150701-TN84/TN84L0FA.TXT /.PS TUB-material: code=rh4ta
anvendelse for måling av offsettrykk output, separasjoncmyk* (CMYK)

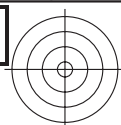
se lignende filer: <http://130.149.60.45/~farbmetrik/TN84/TN84.HTM>
teknisk informasjon: <http://www.ps.bam.de> eller <http://130.149.60.45/~farbmetrik>



TUB registrering: 20150701-TN84/TN84L0FA.TXT /.PS TUB-material: code=rh4ta
anvendelse for måling av offsettrykk output, separasjoncmykn6* (CMYK)

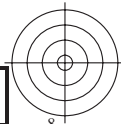
se lignende filer: <http://130.149.60.45/~farbmetrik/TN84/TN84.HTM>
teknisk informasjon: <http://www.ps.bam.de> eller <http://130.149.60.45/~farbmetrik>





TUB registrering: 20150701-TN84/TN84L0FA.TXT /.PS TUB-material: code=rh4ta
anvendelse for måling av offsettrykk output, separasjoncmyk* (CMYK)

se lignende filer: <http://130.149.60.45/~farbmetrik/TN84/TN84.HTM>
teknisk informasjon: <http://www.ps.bam.de> eller <http://130.149.60.45/~farbmetrik>



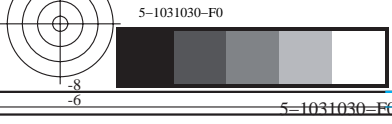
5=103830-F0

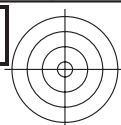
5=103830-F0

TUB registrering: 20150701-TN84/TN84L0FA.TXT /.PS TUB-material: code=rh4ta
anvendelse for måling av offsettrykk output, separasjoncmyk* (CMYK)

se lignende filer: <http://130.149.60.45/~farbmetrik/TN84/TN84.HTM>
teknisk informasjon: <http://www.ps.bam.de> eller <http://130.149.60.45/~farbmetrik>

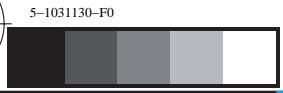
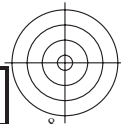






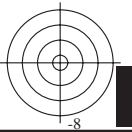
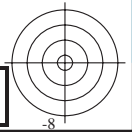
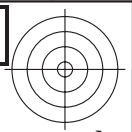
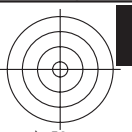
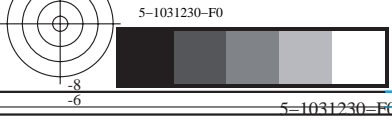
TUB registrering: 20150701-TN84/TN84L0FA.TXT /.PS TUB-material: code=rh4ta
anvendelse for måling av offsettrykk output, separasjoncmyk* (CMYK)

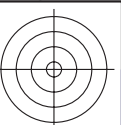
se lignende filer: <http://130.149.60.45/~farbmetrik/TN84/TN84.HTM>
teknisk informasjon: <http://www.ps.bam.de> eller <http://130.149.60.45/~farbmetrik>



TUB registrering: 20150701-TN84/TN84L0FA.TXT /.PS TUB-material: code=rh4ta
anvendelse for måling av offsettrykk output, separasjoncmykn6* (CMYK)

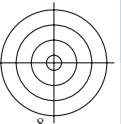
se lignende filer: <http://130.149.60.45/~farbmetrik/TN84/TN84.HTM>
teknisk informasjon: <http://www.ps.bam.de> eller <http://130.149.60.45/~farbmetrik>

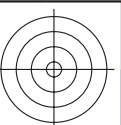




TUB registrering: 20150701-TN84/TN84L0FA.TXT /.PS TUB-material: code=rh4ta
anvendelse for måling av offsettrykk output, separasjoncmyk* (CMYK)

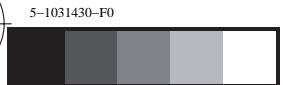
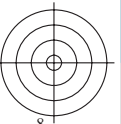
se lignende filer: <http://130.149.60.45/~farbmetrik/TN84/TN84.HTM>
teknisk informasjon: <http://www.ps.bam.de> eller <http://130.149.60.45/~farbmetrik>





TUB registrering: 20150701-TN84/TN84L0FA.TXT /.PS TUB-material: code=rh4ta
anvendelse for måling av offsettrykk output, separasjoncmyk* (CMYK)

se lignende filer: <http://130.149.60.45/~farbmetrik/TN84/TN84.HTM>
teknisk informasjon: <http://www.ps.bam.de> eller <http://130.149.60.45/~farbmetrik>



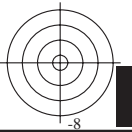
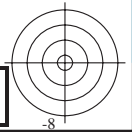
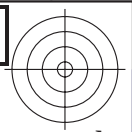
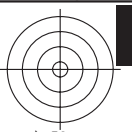
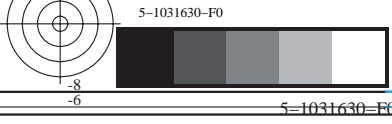
TUB registrering: 20150701-TN84/TN84L0FA.TXT /.PS TUB-material: code=rh4ta
anvendelse for måling av offsettrykk output, separasjoncmyk* (CMYK)

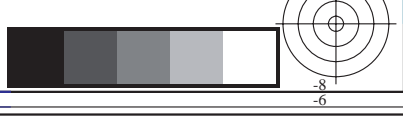
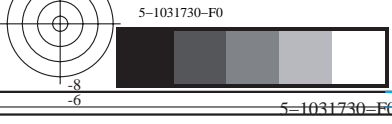
se lignende filer: <http://130.149.60.45/~farbmetrik/TN84/TN84.HTM>
teknisk informasjon: <http://www.ps.bam.de> eller <http://130.149.60.45/~farbmetrik>

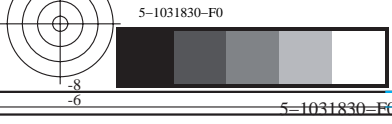


TUB registrering: 20150701-TN84/TN84L0FA.TXT /.PS TUB-material: code=rh4ta
anvendelse for måling av offsettrykk output, separasjoncmyk* (CMYK)

se lignende filer: <http://130.149.60.45/~farbmetrik/TN84/TN84.HTM>
teknisk informasjon: <http://www.ps.bam.de> eller <http://130.149.60.45/~farbmetrik>









TUB registrering: 20150701-TN84/TN84L0FA.TXT /.PS TUB-material: code=rh4ta
anvendelse for måling av offsettrykk output, separasjoncmyk* (CMYK)

se lignende filer: <http://130.149.60.45/~farbmetrik/TN84/TN84.HTM>
teknisk informasjon: <http://www.ps.bam.de> eller <http://130.149.60.45/~farbmetrik>

