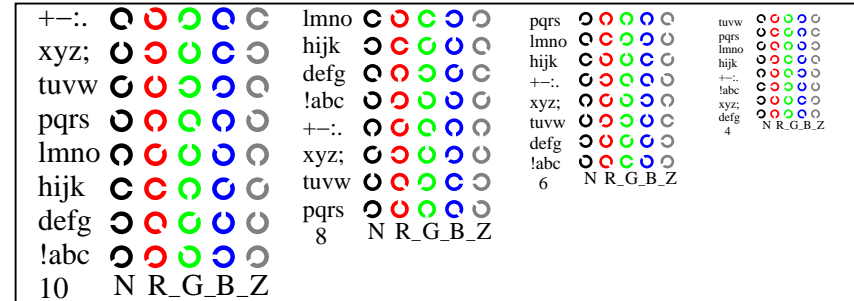
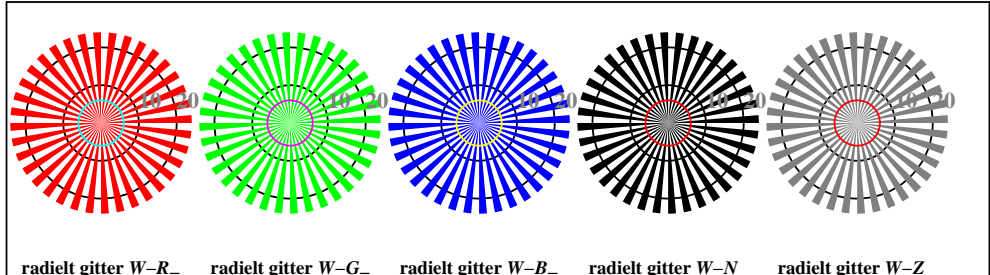


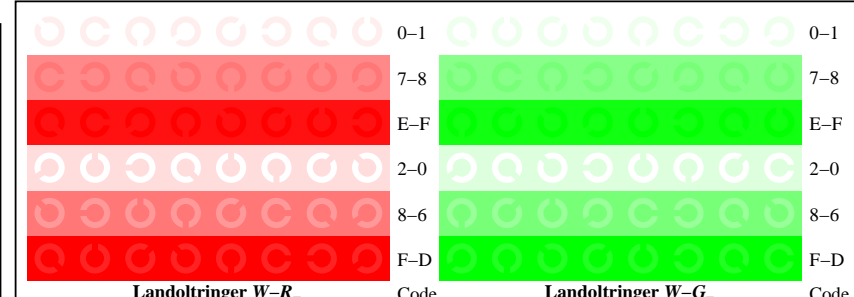
TN841-1, Figur D4W-: 16 ekvidistante trinn W-R₋; W-G₋; W-B₋; W-N; *rgb/cmy0 set(rgb/cmyk)color*



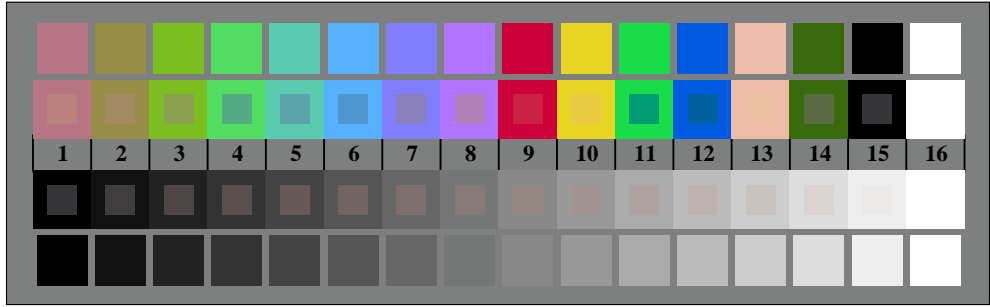
TN841-3, Figur D5W-: Skrift Landoltringer N; R₋; G₋; B₋; Z; *PS operator rgb->rgb_setrgbcolor*



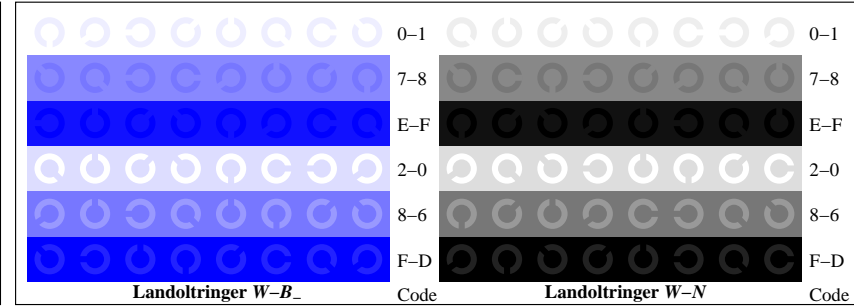
TN840-5, Figur D2W-: radielt gitter W-R₋; W-G₋; W-B₋; W-N; *PS operator rgb->rgb_setrgbcolor*



TN841-5, Figur D6W-: Landoltringer W-R₋; W-G₋; *PS operator rgb setrgbcolor*



TN840-7, Figur D3W-: 14 CIE-prøvefarger og 2 + 16 gråtrinn (sf); *rgb/cmy0 set(rgb/cmyk)color*



TN841-7, Figur D7W-: Landoltringer W-B₋; W-N; *PS operator rgb setrgbcolor*