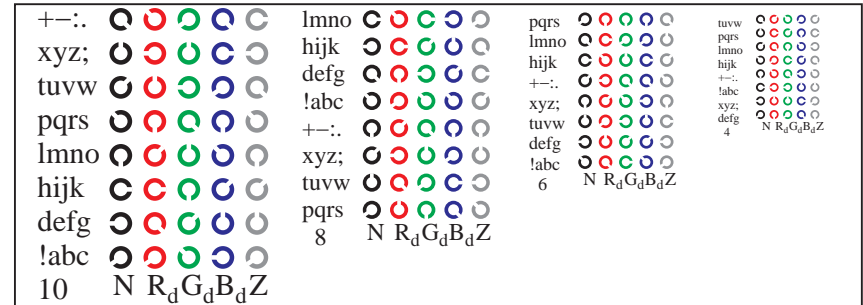
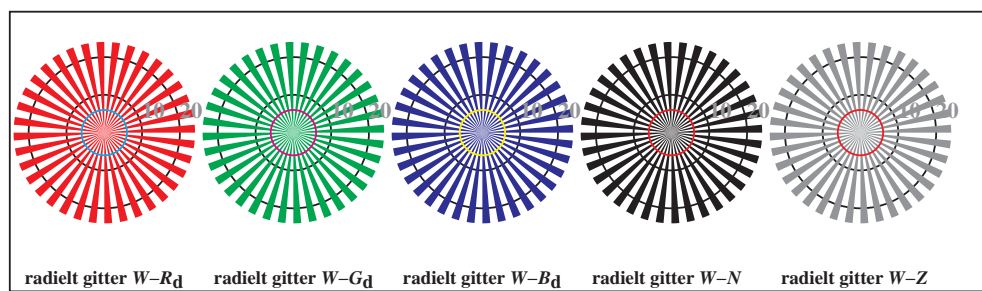


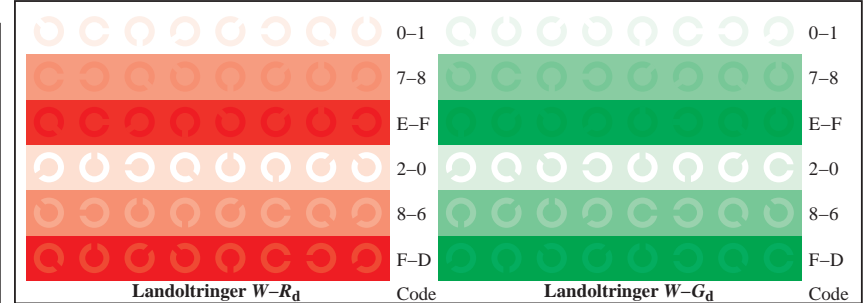
TN841-1, Figur D4Wd: 16 ekvidistante trinn  $W-R_d$ ;  $W-G_d$ ;  $W-B_d$ ;  $W-N$ ;  $rgb/cmy0 \rightarrow rgb_d$  setrgbcolor



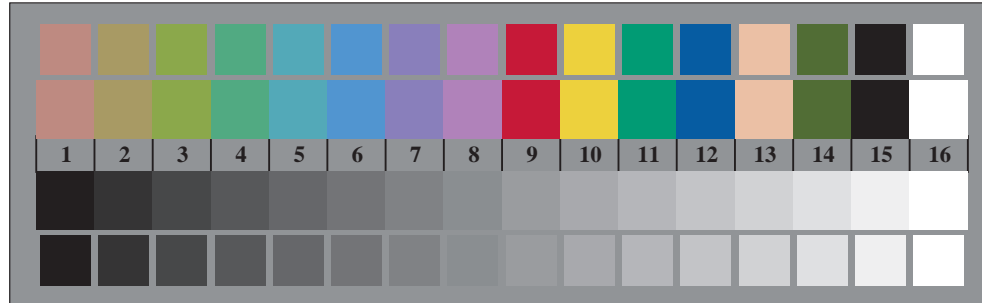
TN841-3, Figur D5Wd: Skrift Landoltringer  $N$ ;  $R_d$ ;  $G_d$ ;  $B_d$ ;  $Z$ ; PS operator  $rgb \rightarrow rgb_d$  setrgbcolor



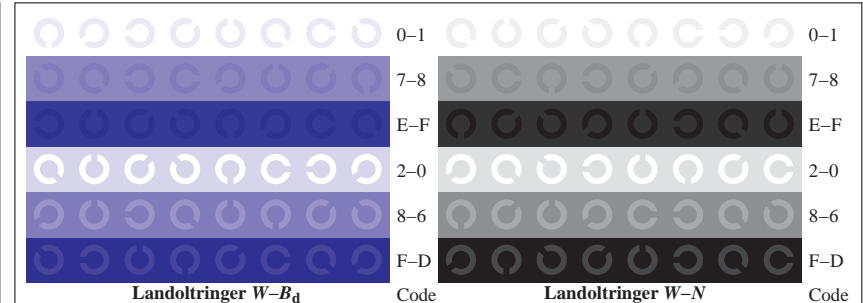
TN840-5, Figur D2Wd: radielt gitter  $W-R_d$ ;  $W-G_d$ ;  $W-B_d$ ;  $W-N$ ; PS operator  $rgb \rightarrow rgb_d$  setrgbcolor



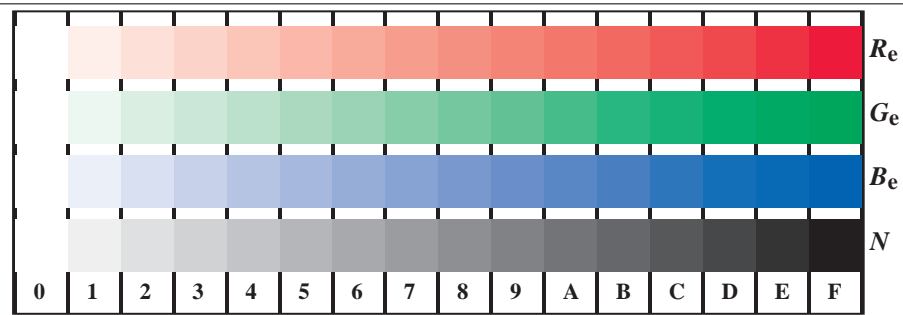
TN841-5, Figur D6Wd: Landoltringer  $W-R_d$ ;  $W-G_d$ ; PS operator  $rgb \rightarrow rgb_d$  setrgbcolor



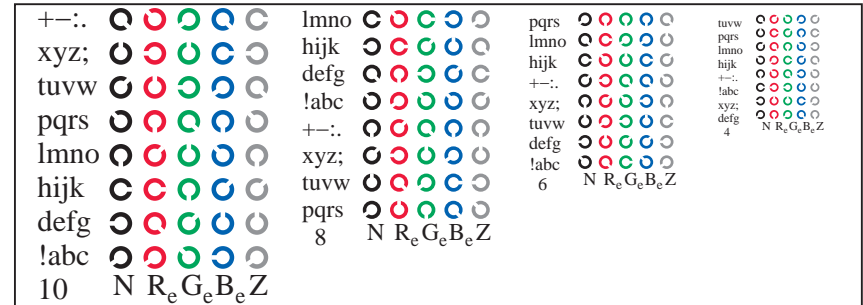
TN840-7, Figur D3Wd: 14 CIE-prøvefarger og 2 + 16 gråtrinn (sf);  $rgb/cmy0 \rightarrow rgb_d$  setrgbcolor



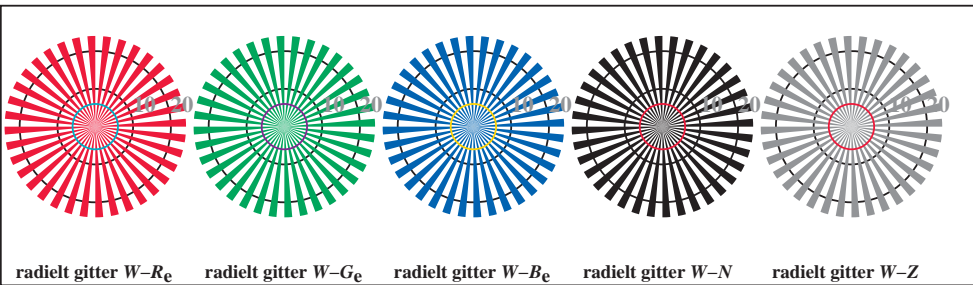
TN841-7, Figur D7Wd: Landoltringer  $W-B_d$ ;  $W-N$ ; PS operator  $rgb \rightarrow rgb_d$  setrgbcolor



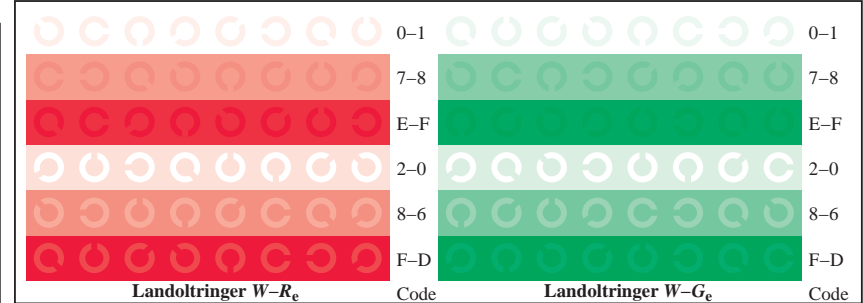
TN841-1, Figur D4We: 16 ekvidistante trinn  $W-R_e$ ;  $W-G_e$ ;  $W-B_e$ ;  $W-N$ ;  $rgb/cmy0 \rightarrow rgb_e$  setrgbcolor



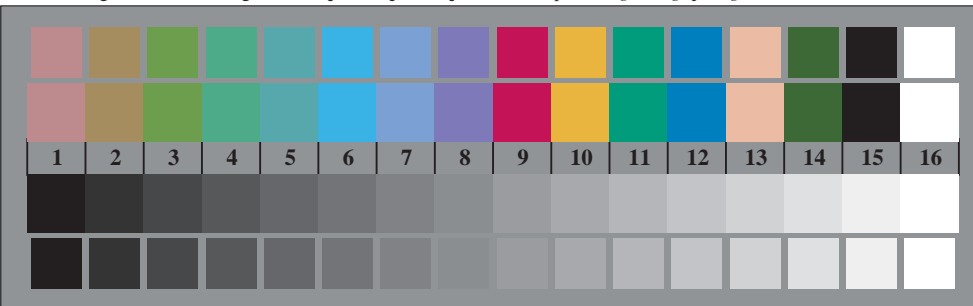
TN841-3, Figur D5We: Skrift Landoltringer  $N$ ;  $R_e$ ;  $G_e$ ;  $B_e$ ;  $Z$ ; PS operator  $rgb \rightarrow rgb_e$  setrgbcolor



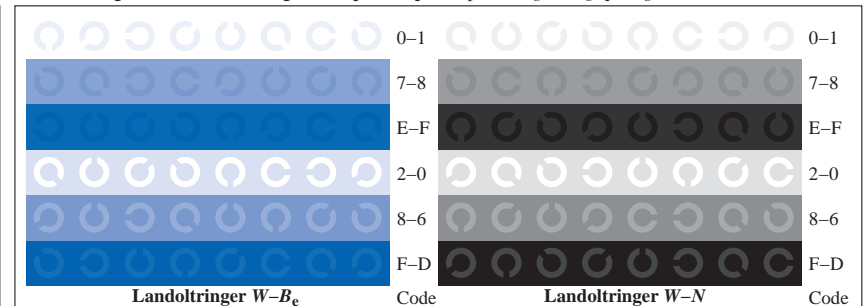
TN840-5, Figur D2We: radielt gitter  $W-R_e$ ;  $W-G_e$ ;  $W-B_e$ ;  $W-N$ ; PS operator  $rgb \rightarrow rgb_e$  setrgbcolor



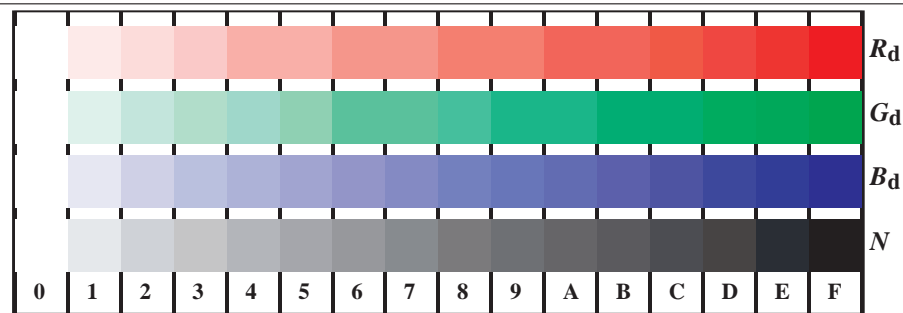
TN841-5, Figur D6We: Landoltringer  $W-R_e$ ;  $W-G_e$ ; PS operator  $rgb \rightarrow rgb_e$  setrgbcolor



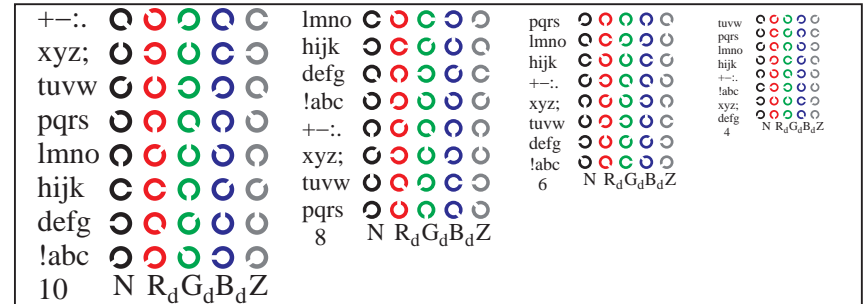
TN840-7, Figur D3We: 14 CIE-prøvefarger og 2 + 16 gråtrinn (sf);  $rgb/cmy0 \rightarrow rgb_e$  setrgbcolor



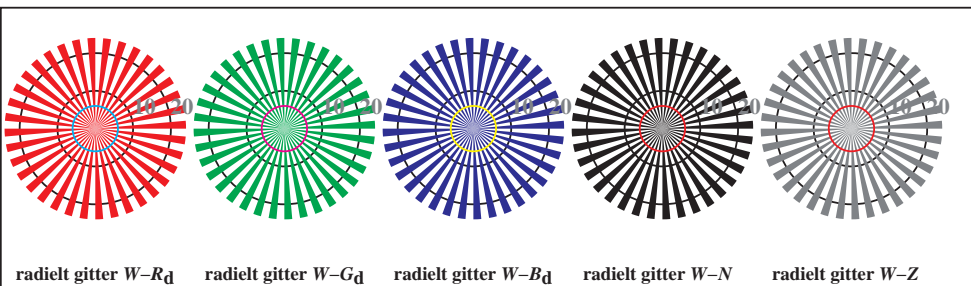
TN841-7, Figur D7We: Landoltringer  $W-B_e$ ;  $W-N$ ; PS operator  $rgb \rightarrow rgb_e$  setrgbcolor



TN841-1, Figur D4Wdd: 16 ekvidistante trinn  $W-R_d$ ;  $W-G_d$ ;  $W-B_d$ ;  $W-N$ ;  $rgb/cmy0 \rightarrow rgb_{dd}$  *setrgbcolor*



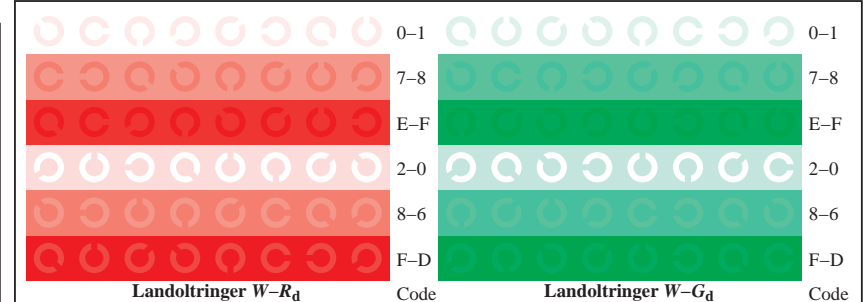
TN841-3, Figur D5Wdd: Skrift Landoltringer  $N$ ;  $R_d$ ;  $G_d$ ;  $B_d$ ;  $Z$ ; *PS operator rgb \rightarrow rgb\_{dd}* *setrgbcolor*



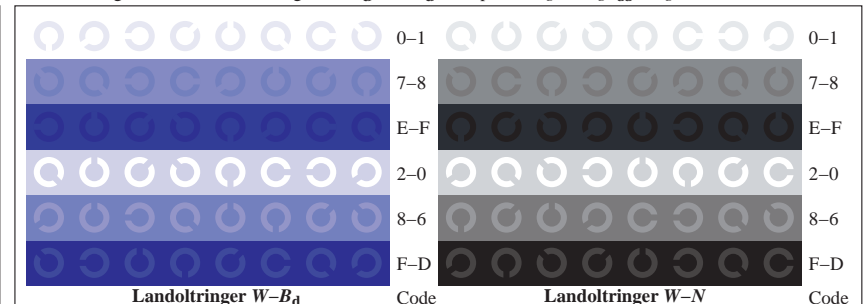
TN840-5, Figur D2Wdd: radielt gitter  $W-R_d$ ;  $W-G_d$ ;  $W-B_d$ ;  $W-N$ ; *PS operator rgb \rightarrow rgb\_{dd}* *setrgbcolor*



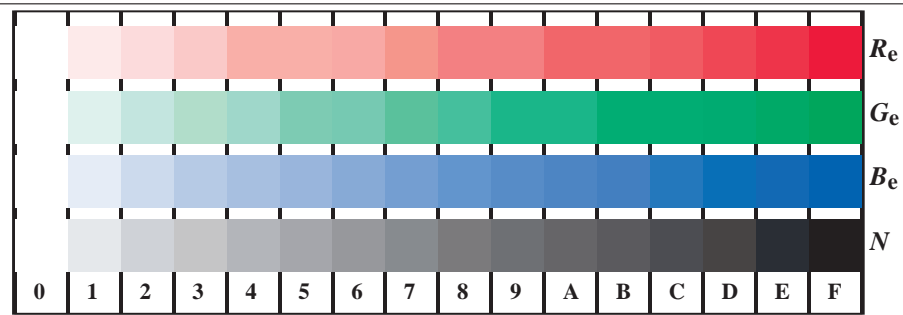
TN840-7, Figur D3Wdd: 14 CIE-prøvefarger og 2 + 16 gråtrinn (sf);  $rgb/cmy0 \rightarrow rgb_{dd}$  *setrgbcolor*



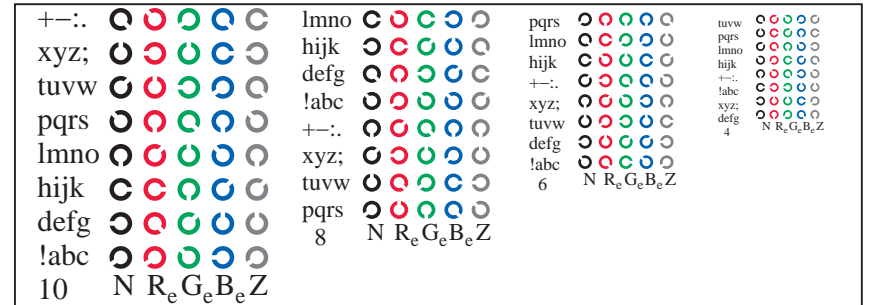
TN841-5, Figur D6Wdd: Landoltringer  $W-R_d$ ;  $W-G_d$ ; *PS operator rgb \rightarrow rgb\_{dd}* *setrgbcolor*



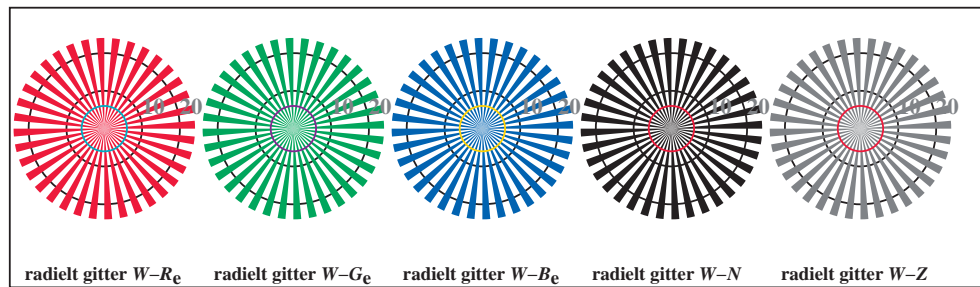
TN841-7, Figur D7Wdd: Landoltringer  $W-B_d$ ;  $W-N$ ; *PS operator rgb \rightarrow rgb\_{dd}* *setrgbcolor*



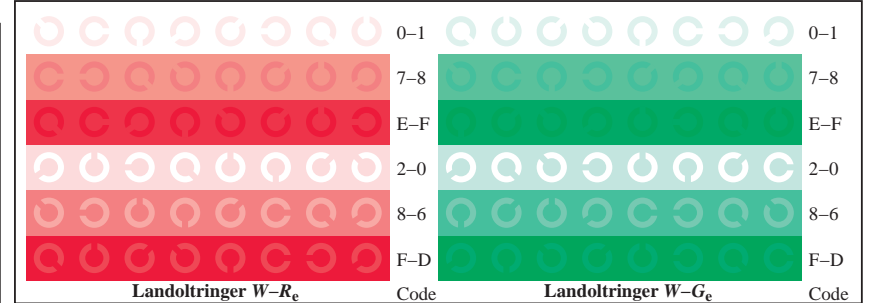
TN841-1, Figur D4Wde: 16 ekvidistante trinn  $W-R_e$ ;  $W-G_e$ ;  $W-B_e$ ;  $W-N$ ;  $rgb/cmy0 \rightarrow rgb_{de}$  setrgbcolor



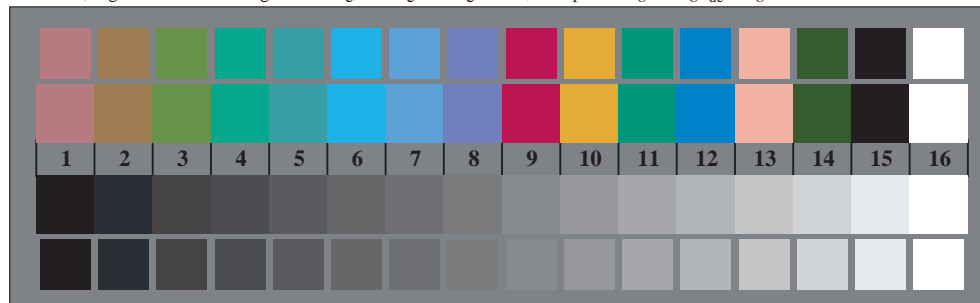
TN841-3, Figur D5Wde: Skrift Landoltringer  $N$ ;  $R_e$ ;  $G_e$ ;  $B_e$ ;  $Z$ ; PS operator  $rgb \rightarrow rgb_{de}$  setrgbcolor



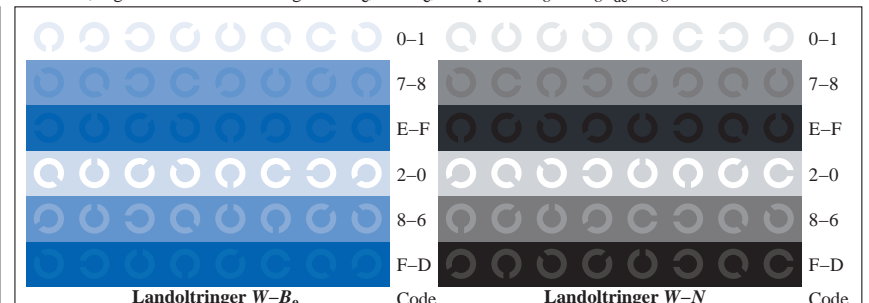
TN840-5, Figur D2Wde: radielt gitter  $W-R_e$ ;  $W-G_e$ ;  $W-B_e$ ;  $W-N$ ; PS operator  $rgb \rightarrow rgb_{de}$  setrgbcolor



TN841-3, Figur D5Wde: Landoltringer  $W-R_e$ ;  $W-G_e$ ; PS operator  $rgb \rightarrow rgb_{de}$  setrgbcolor



TN840-7, Figur D3Wde: 14 CIE-prøvefarger og 2 + 16 gråtrinn (sf);  $rgb/cmy0 \rightarrow rgb_{de}$  setrgbcolor



TN841-7, Figur D7Wde: Landoltringer  $W-B_e$ ;  $W-N$ ; PS operator  $rgb \rightarrow rgb_{de}$  setrgbcolor