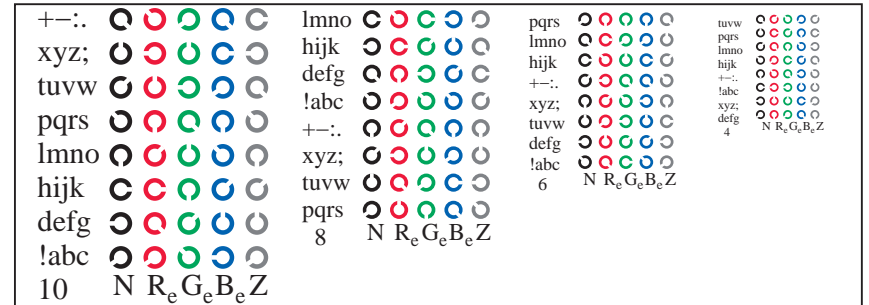
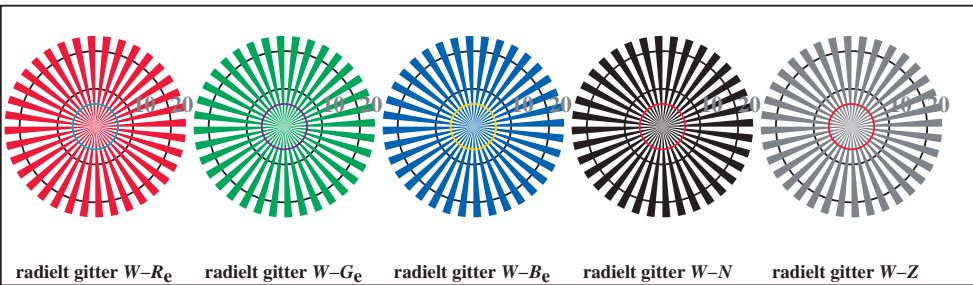


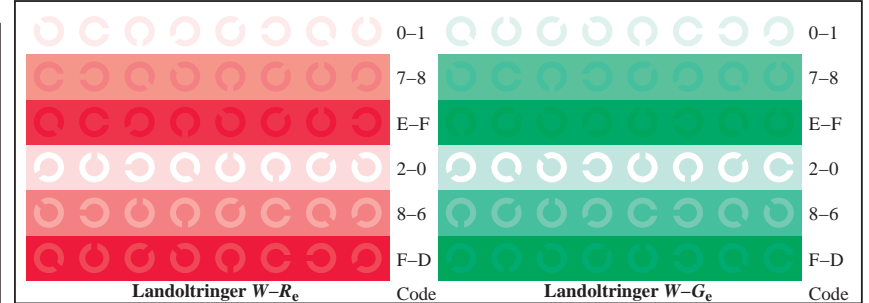
TN841-1, Figur D4Wde: 16 ekvidistante trinn  $W-R_e$ ;  $W-G_e$ ;  $W-B_e$ ;  $W-N$ ;  $rgb/cmy0 \rightarrow rgb_{de}$  setrgbcolor



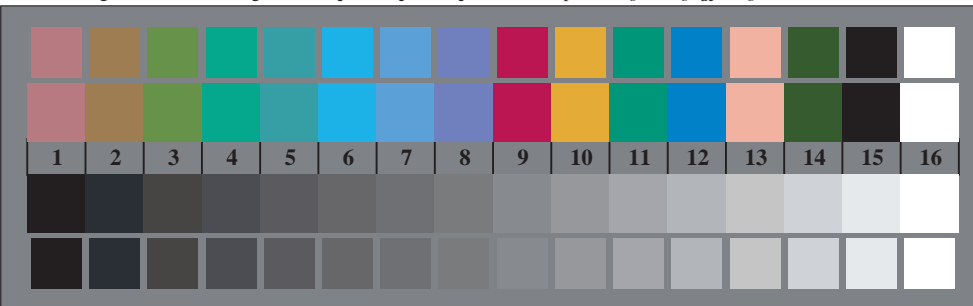
TN841-3, Figur D5Wde: Skrift Landoltringer  $N$ ;  $R_e$ ;  $G_e$ ;  $B_e$ ;  $Z$ ; PS operator  $rgb \rightarrow rgb_{de}$  setrgbcolor



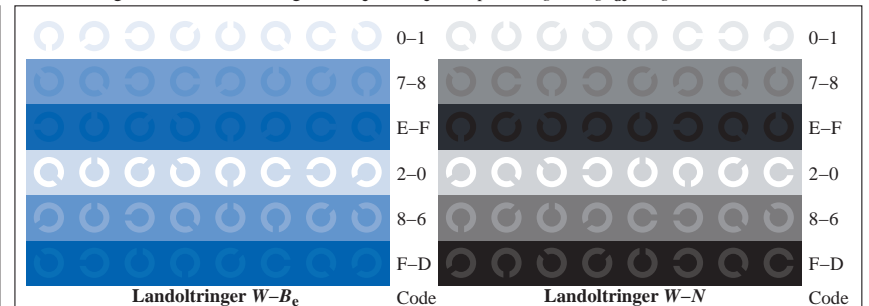
TN840-5, Figur D2Wde: radielt gitter  $W-R_e$ ;  $W-G_e$ ;  $W-B_e$ ;  $W-N$ ; PS operator  $rgb \rightarrow rgb_{de}$  setrgbcolor



TN841-3, Figur D5Wde: Landoltringer  $W-R_e$ ;  $W-G_e$ ; PS operator  $rgb \rightarrow rgb_{de}$  setrgbcolor



TN840-7, Figur D3Wde: 14 CIE-prøvefarger og 2 + 16 gråtrinn (sf);  $rgb/cmy0 \rightarrow rgb_{de}$  setrgbcolor



TN841-7, Figur D7Wde: Landoltringer  $W-B_e$ ;  $W-N$ ; PS operator  $rgb \rightarrow rgb_{de}$  setrgbcolor