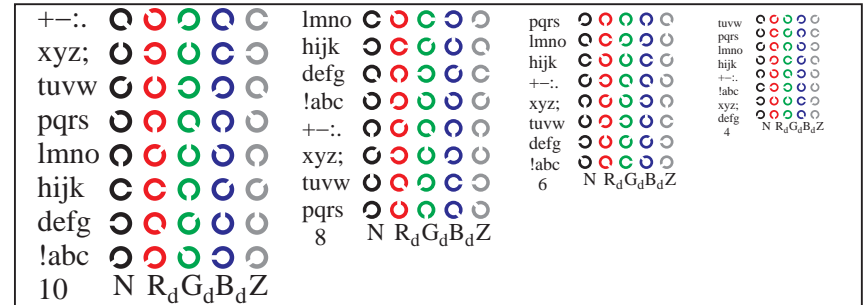
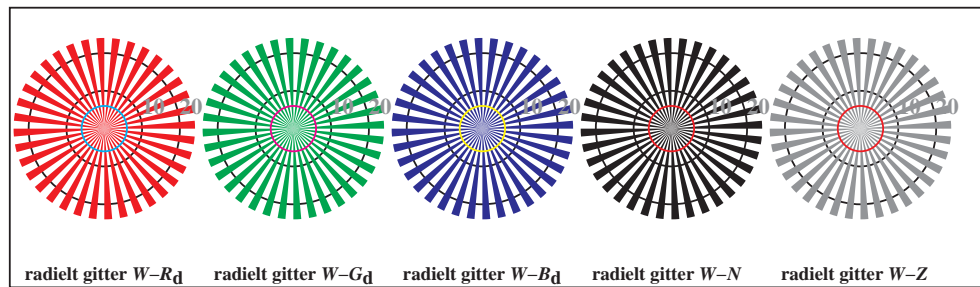


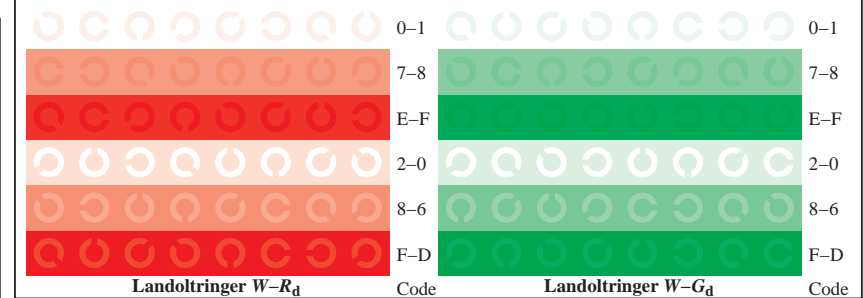
TN841-1, Figur D4Wd: 16 ekvidistante trinn $W-R_d$; $W-G_d$; $W-B_d$; $W-N$; $rgb/cmy0 \rightarrow rgb_d$ setrgbcolor



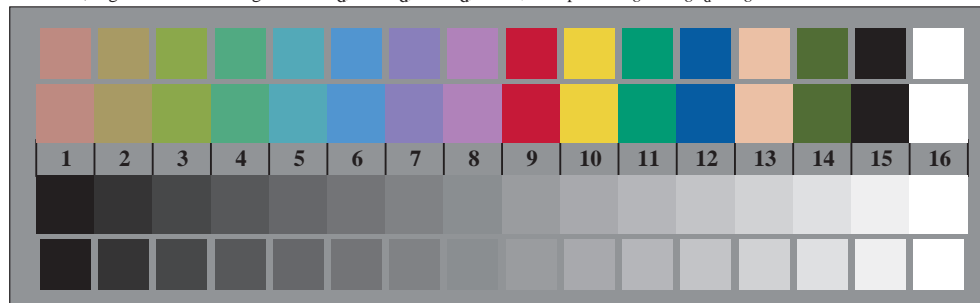
TN841-3, Figur D5Wd: Skrift Landoltringer N ; R_d ; G_d ; B_d ; Z ; PS operator $rgb \rightarrow rgb_d$ setrgbcolor



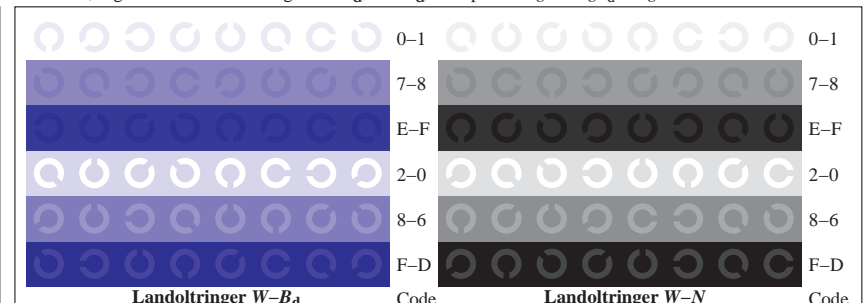
TN840-5, Figur D2Wd: radielt gitter $W-R_d$; $W-G_d$; $W-B_d$; $W-N$; PS operator $rgb \rightarrow rgb_d$ setrgbcolor



TN841-5, Figur D6Wd: Landoltringer $W-R_d$; $W-G_d$; PS operator $rgb \rightarrow rgb_d$ setrgbcolor



TN840-7, Figur D3Wd: 14 CIE-prøvefarger og 2 + 16 gråtrinn (sf); $rgb/cmy0 \rightarrow rgb_d$ setrgbcolor



TN841-7, Figur D7Wd: Landoltringer $W-B_d$; $W-N$; PS operator $rgb \rightarrow rgb_d$ setrgbcolor