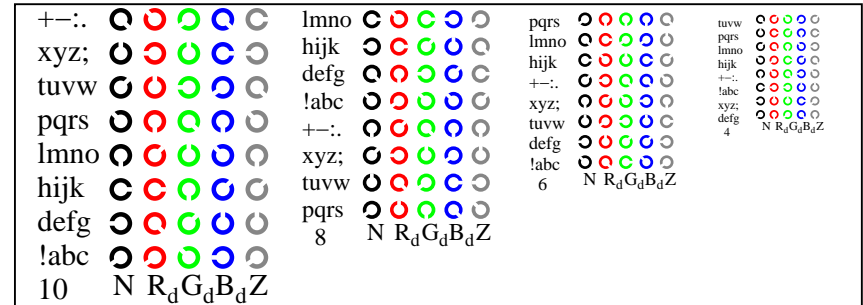
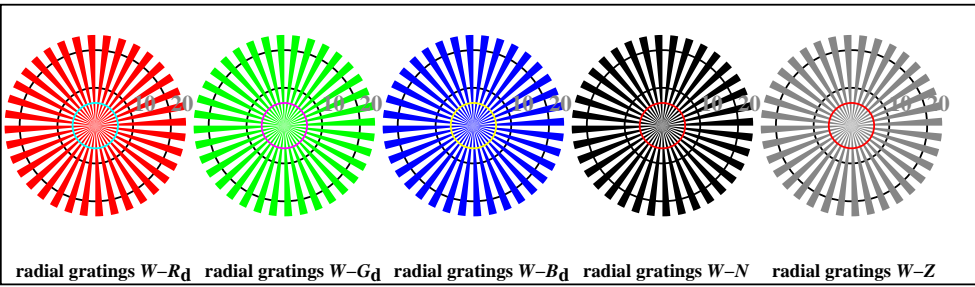


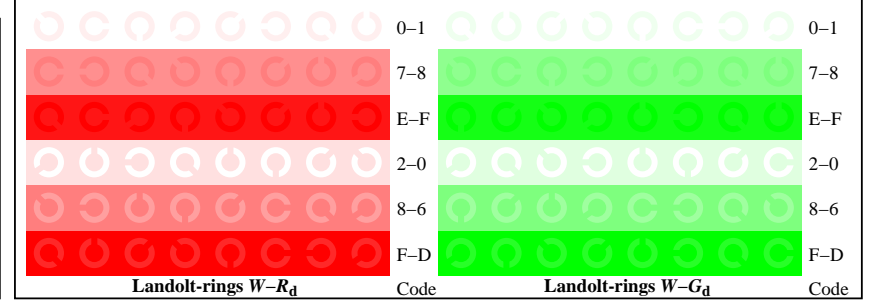
TN821-1, Picture D4Wd: 16 equidistant steps $W-R_d$; $W-G_d$; $W-B_d$; $W-N$; $rgb/cmy0 \rightarrow rgb_d$ setrgbcolor



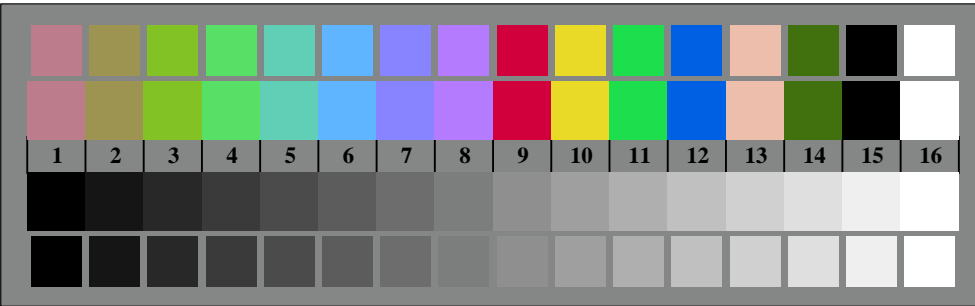
TN821-3, Picture D5Wd: Script Landolt-rings N ; R_d ; G_d ; B_d ; Z ; PS operator $rgb \rightarrow rgb_d$ setrgbcolor



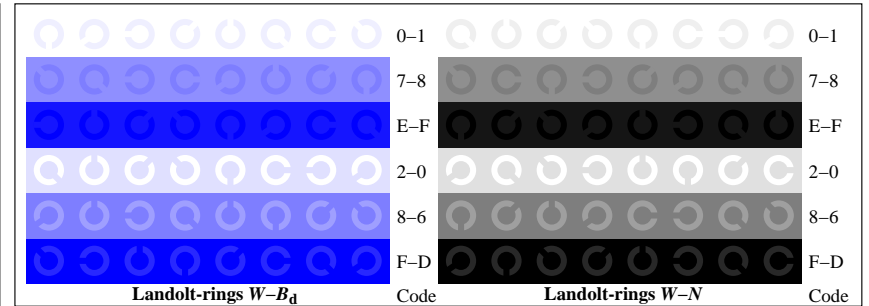
TN820-5, Picture D2Wd: radial gratings $W-R_d$; $W-G_d$; $W-B_d$; $W-N$; PS operator $rgb \rightarrow rgb_d$ setrgbcolor



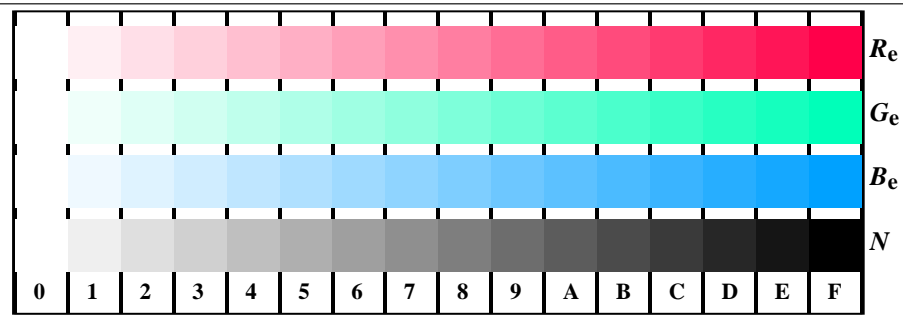
TN821-5, Picture D6Wd: Landolt-rings $W-R_d$; $W-G_d$; PS operator $rgb \rightarrow rgb_d$ setrgbcolor



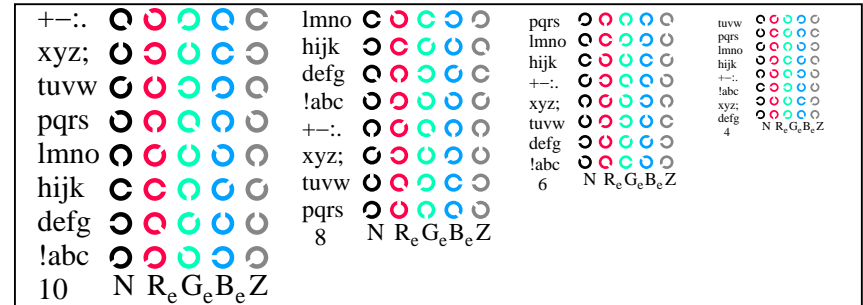
TN820-7, Picture D3Wd: 14 CIE-test colours and 2 + 16 grey steps (sf); $rgb/cmy0 \rightarrow rgb_d$ setrgbcolor



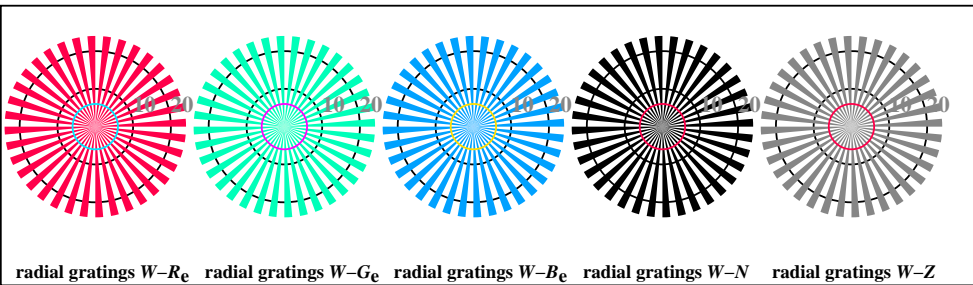
TN821-7, Picture D7Wd: Landolt-rings $W-B_d$; $W-N$; PS operator $rgb \rightarrow rgb_d$ setrgbcolor



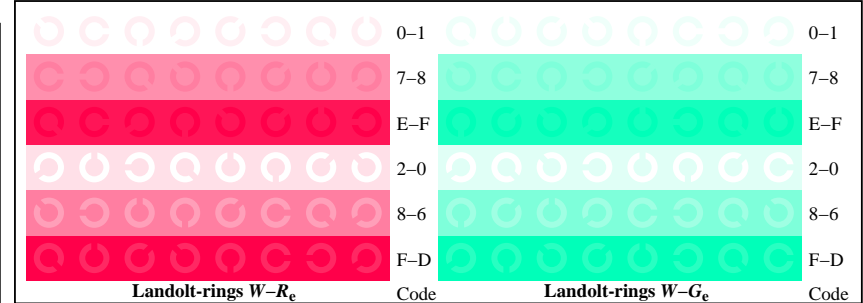
TN821-1, Picture D4We: 16 equidistant steps $W-R_e$; $W-G_e$; $W-B_e$; $W-N$; $rgb/cmy0 \rightarrow rgb_e$ *setrgbcolor*



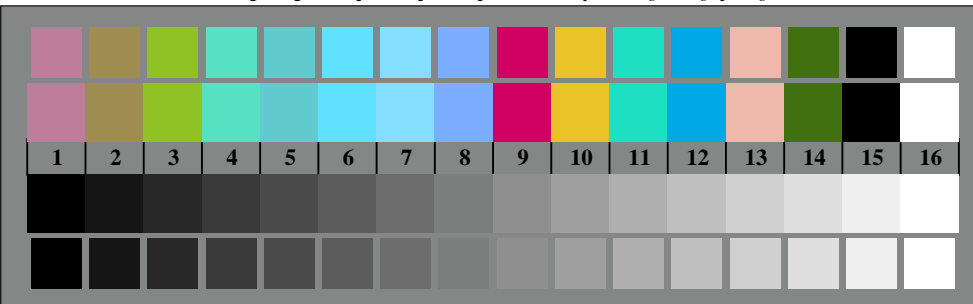
TN821-3, Picture D5We: Script Landolt-rings N ; R_e ; G_e ; B_e ; Z ; *PS operator rgb \rightarrow rgb_e setrgbcolor*



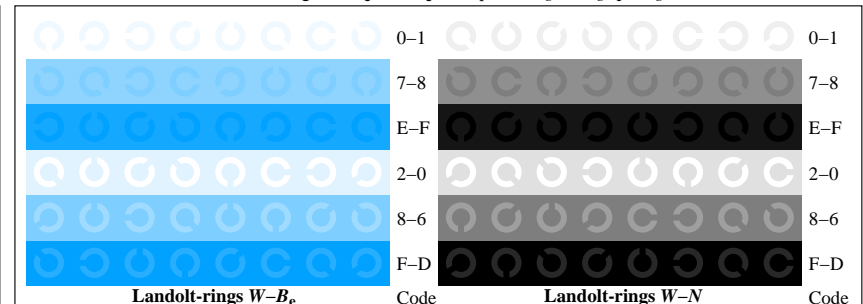
TN820-5, Picture D2We: radial gratings $W-R_e$; $W-G_e$; $W-B_e$; $W-N$; *PS operator rgb \rightarrow rgb_e setrgbcolor*



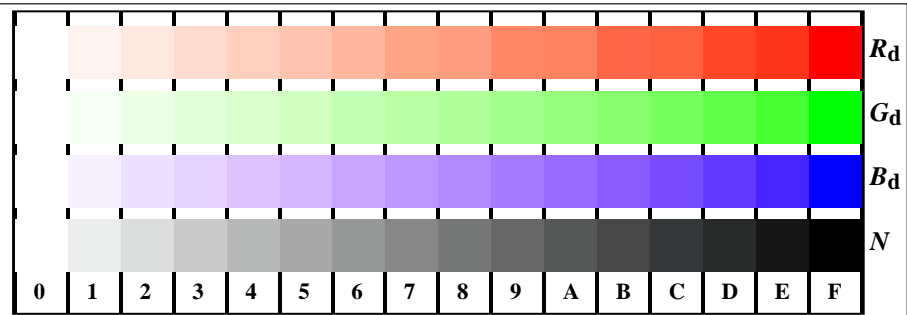
TN821-5, Picture D6We: Landolt-rings $W-R_e$; $W-G_e$; *PS operator rgb \rightarrow rgb_e setrgbcolor*



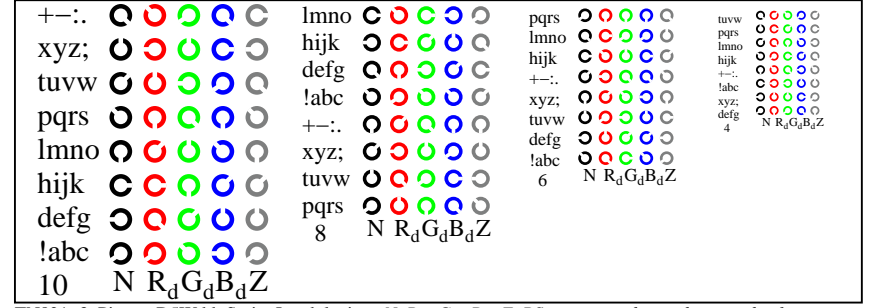
TN820-7, Picture D3We: 14 CIE-test colours and 2 + 16 grey steps (sf); $rgb/cmy0 \rightarrow rgb_e$ *setrgbcolor*



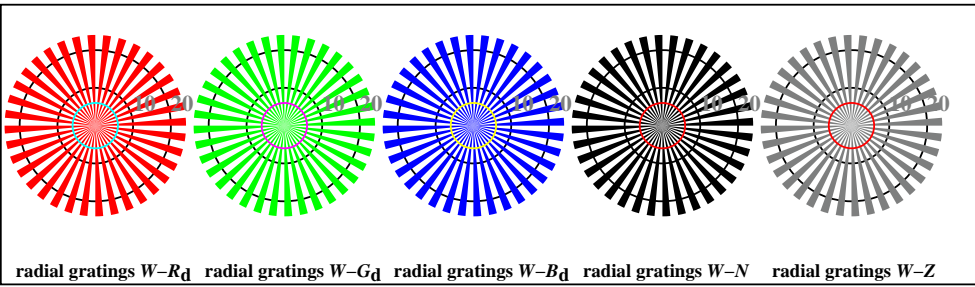
TN821-7, Picture D7We: Landolt-rings $W-B_e$; $W-N$; *PS operator rgb \rightarrow rgb_e setrgbcolor*



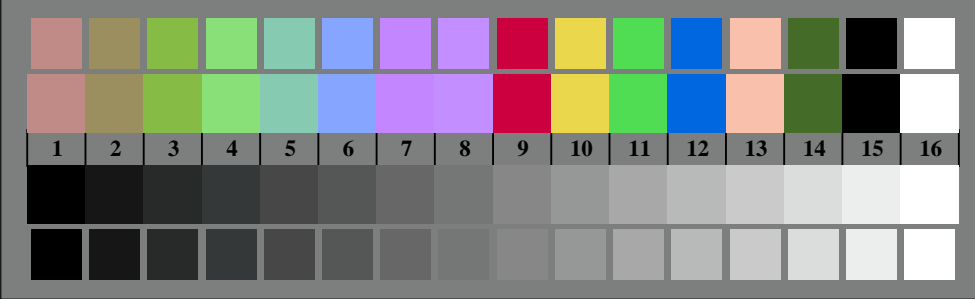
TN821-1, Picture D4Wdd: 16 equidistant steps $W-R_d$; $W-G_d$; $W-B_d$; $W-N$; $rgb/cmy_0 \rightarrow rgb_{dd}$ setrgbcolor



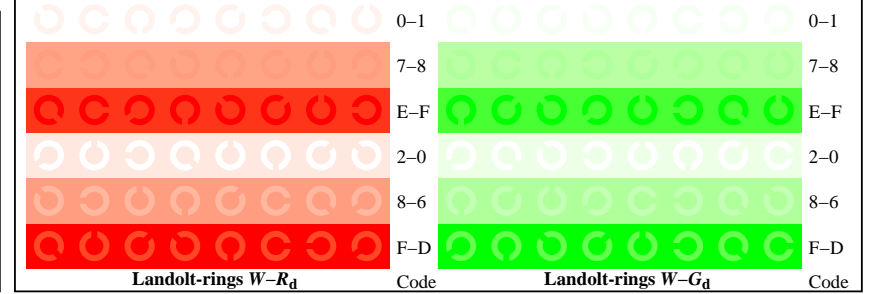
TN821-3, Picture D5Wdd: Script Landolt-rings N ; R_d ; G_d ; B_d ; Z ; PS operator $rgb \rightarrow rgb_{dd}$ setrgbcolor



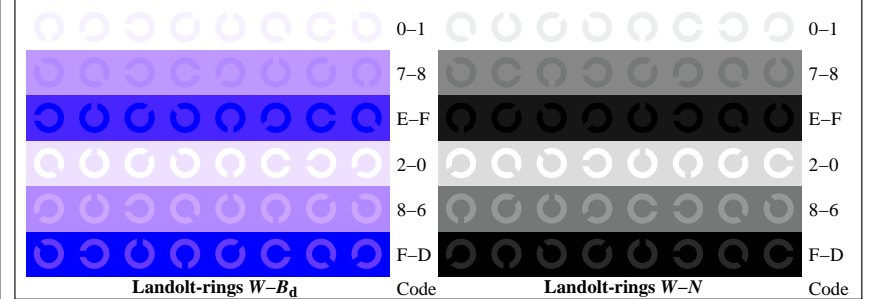
TN820-5, Picture D2Wdd: radial gratings $W-R_d$; $W-G_d$; $W-B_d$; $W-N$; PS operator $rgb \rightarrow rgb_{dd}$ setrgbcolor



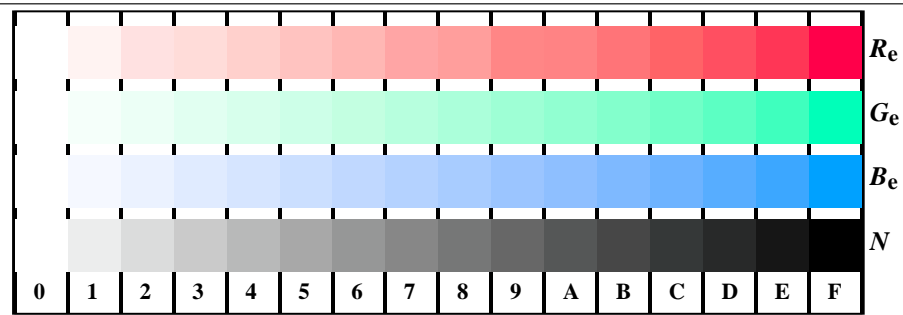
TN820-7, Picture D3Wdd: 14 CIE-test colours and 2 + 16 grey steps (sf); $rgb/cmy_0 \rightarrow rgb_{dd}$ setrgbcolor



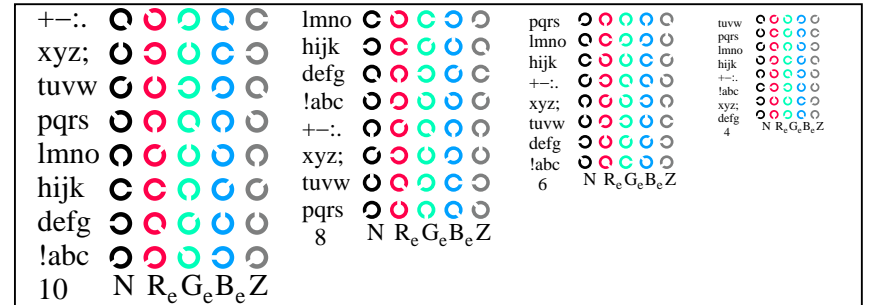
TN821-5, Picture D6Wdd: Landolt-rings $W-R_d$; $W-G_d$; PS operator $rgb \rightarrow rgb_{dd}$ setrgbcolor



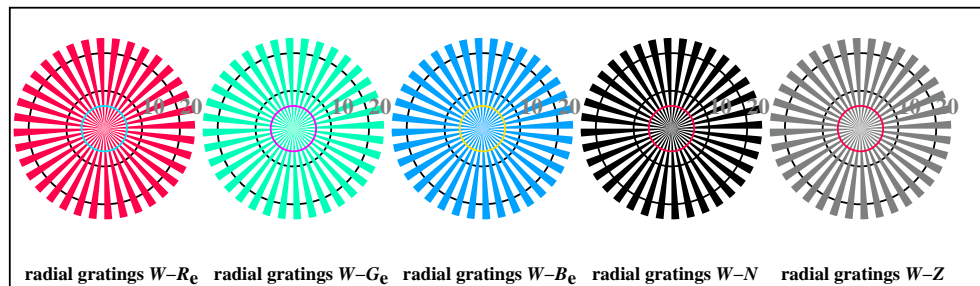
TN821-7, Picture D7Wdd: Landolt-rings $W-B_d$; $W-N$; PS operator $rgb \rightarrow rgb_{dd}$ setrgbcolor



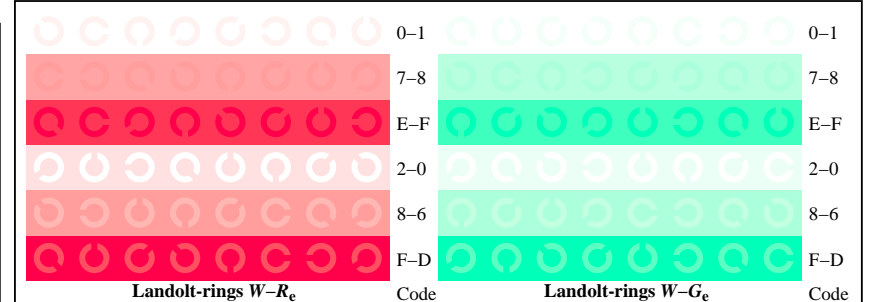
TN821-1, Picture D4Wde: 16 equidistant steps $W-R_e$; $W-G_e$; $W-B_e$; $W-N$; $rgb/cmy0 \rightarrow rgb_{de}$ setrgbcolor



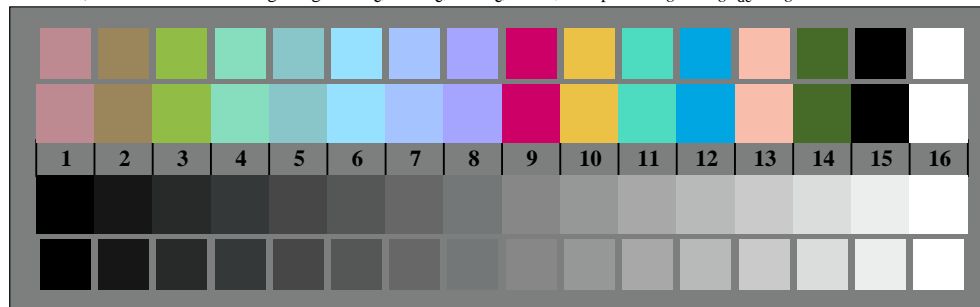
TN821-3, Picture D5Wde: Script Landolt-rings N ; R_e ; G_e ; B_e ; Z ; PS operator $rgb \rightarrow rgb_{de}$ setrgbcolor



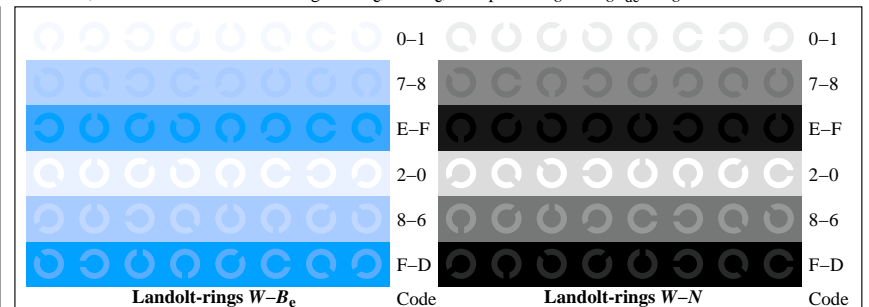
TN820-5, Picture D2Wde: radial gratings $W-R_e$; $W-G_e$; $W-B_e$; $W-N$; PS operator $rgb \rightarrow rgb_{de}$ setrgbcolor



TN821-5, Picture D6Wde: Landolt-rings $W-R_e$; $W-G_e$; PS operator $rgb \rightarrow rgb_{de}$ setrgbcolor



TN820-7, Picture D3Wde: 14 CIE-test colours and 2 + 16 grey steps (sf); $rgb/cmy0 \rightarrow rgb_{de}$ setrgbcolor



TN821-7, Picture D7Wde: Landolt-rings $W-B_e$; $W-N$; PS operator $rgb \rightarrow rgb_{de}$ setrgbcolor