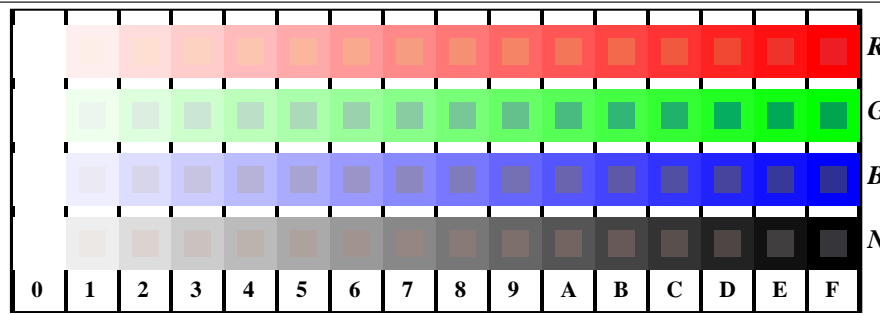


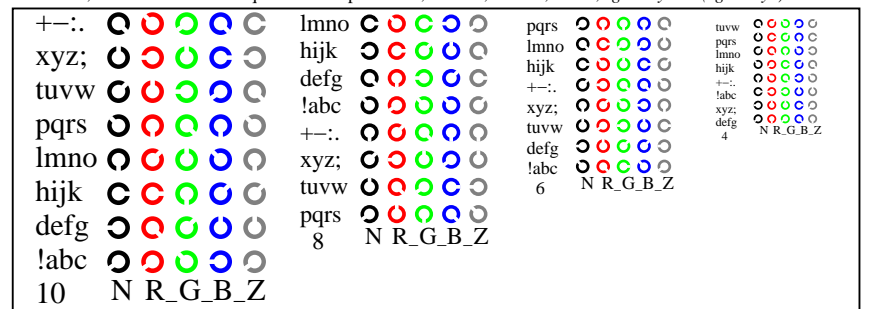
se lignende filer: <http://130.149.60.45/~farbmetrik/TN81/TN81.HTM>  
teknisk informasjon: <http://www.ps.bam.de> eller <http://130.149.60.45/~farbmetrik>

TUB registrering: 20150701-TN81/TN81L0NP.PDF /.PS  
anvendelse for måling av display output

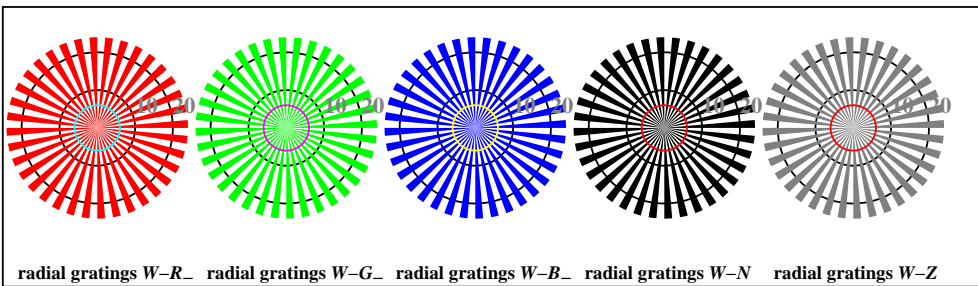
TUB-material: code=rh4ta



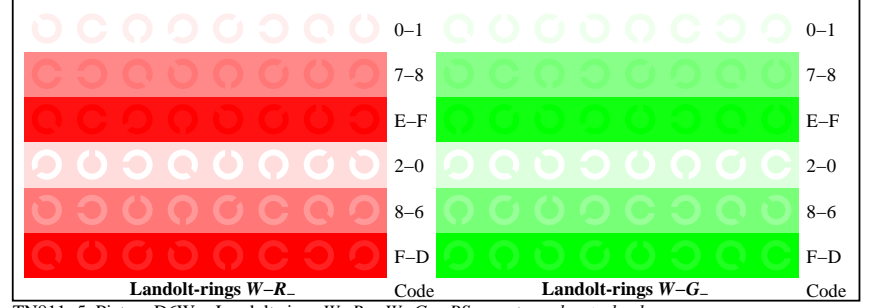
TN811-1, Picture D4W-: 16 equidistant steps W-R; W-G; W-B; W-N; rgb/cmy0 set(rgb/cmyk)color



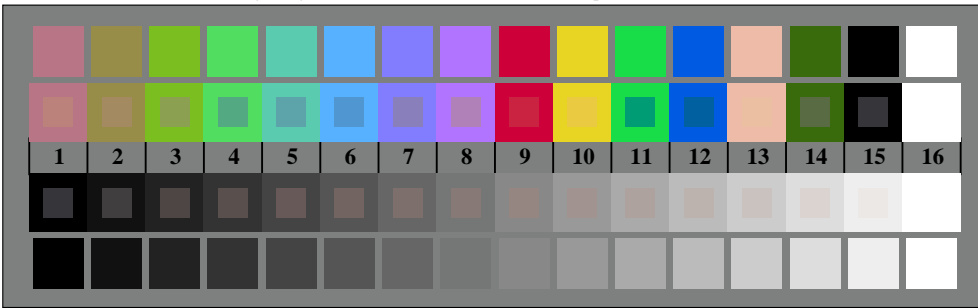
TN811-3, Picture D5W-: Script Landolt-rings N; R; G; B; Z; PS operator rgb->rgb\_setrgbcolor



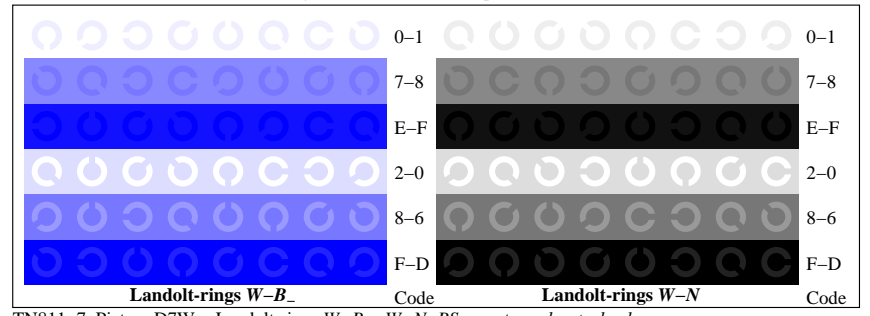
TN810-5, Picture D2W-: radial gratings W-R; W-G; W-B; W-N; PS operator rgb->rgb\_setrgbcolor



TN811-5, Picture D6W-: Landolt-rings W-R; W-G; PS operator rgb\_setrgbcolor



TN810-7, Picture D3W-: 14 CIE-test colours and 2 + 16 grey steps (sf); rgb/cmy0 set(rgb/cmyk)color



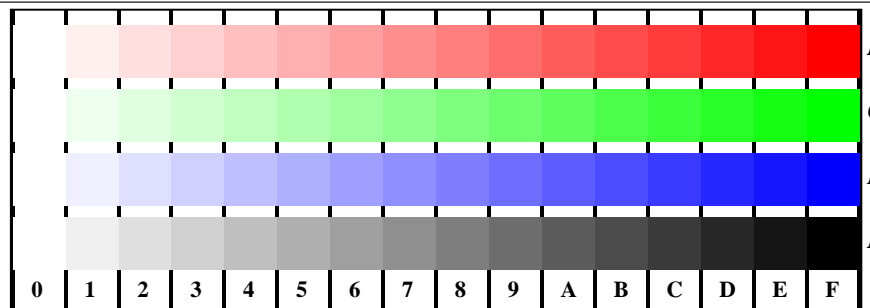
TN811-7, Picture D7W-: Landolt-rings W-B; W-N; PS operator rgb\_setrgbcolor



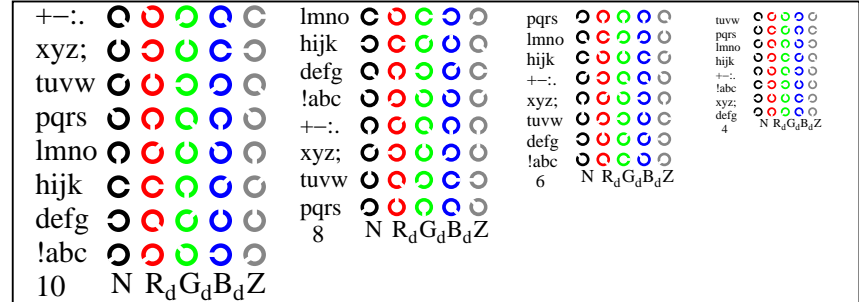
se lignende filer: <http://130.149.60.45/~farbmetrik/TN81/TN81.HTM>  
teknisk informasjon: <http://www.ps.bam.de> eller <http://130.149.60.45/~farbmetrik>

TUB registrering: 20150701-TN81/TN81L0NP.PDF /.PS  
anvendelse for måling av display output, ingen separasjon

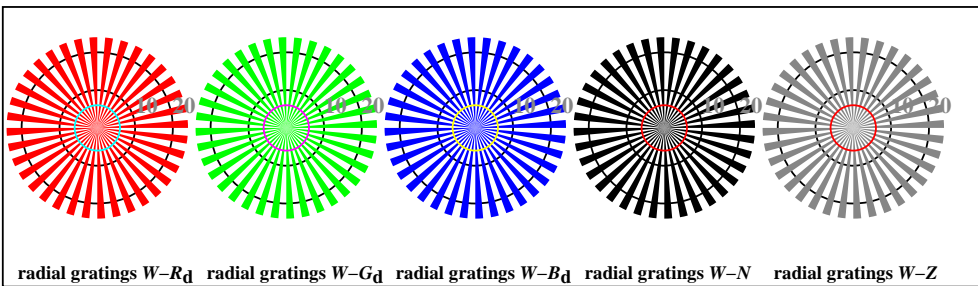
TUB-material: code=rh4ta



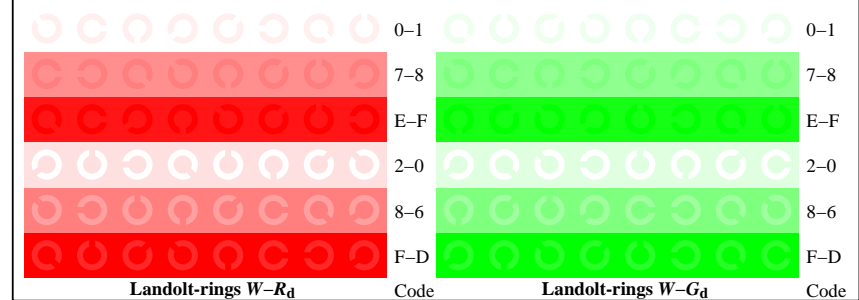
TN811-1, Picture D4Wd: 16 equidistant steps W-R<sub>d</sub>; W-G<sub>d</sub>; W-B<sub>d</sub>; W-N; rgb/cmy0->rgb<sub>d</sub> setrgbcolor



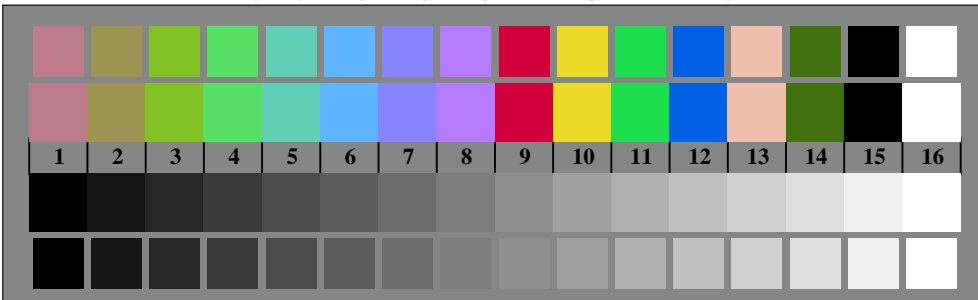
TN811-3, Picture D5Wd: Script Landolt-rings N; R<sub>d</sub>; G<sub>d</sub>; B<sub>d</sub>; Z; PS operator rgb->rgb<sub>d</sub> setrgbcolor



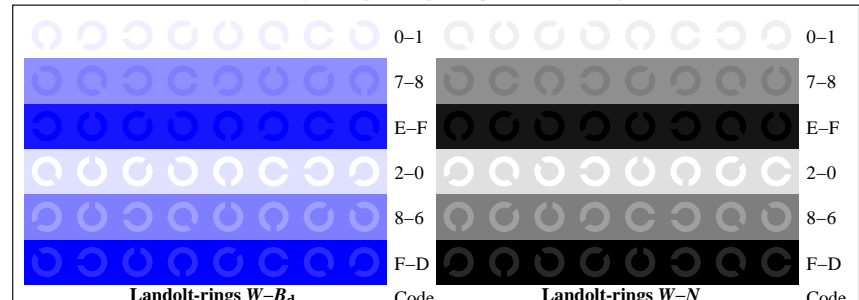
TN810-5, Picture D2Wd: radial gratings W-R<sub>d</sub>; W-G<sub>d</sub>; W-B<sub>d</sub>; W-N; PS operator rgb->rgb<sub>d</sub> setrgbcolor



TN811-5, Picture D6Wd: Landolt-rings W-R<sub>d</sub>; W-G<sub>d</sub>; PS operator rgb->rgb<sub>d</sub> setrgbcolor



TN810-7, Picture D3Wd: 14 CIE-test colours and 2 + 16 grey steps (sf); rgb/cmy0->rgb<sub>d</sub> setrgbcolor



TN811-7, Picture D7Wd: Landolt-rings W-B<sub>d</sub>; W-N; PS operator rgb->rgb<sub>d</sub> setrgbcolor



Table with columns: n/j, HIC\*Fa, rgb\_Fa, icf\_Fa, hsi\_Fa, rgb\*Fa, LabCh\*Fa, DE\*Fa, hsiMd, rgb\*Md, LabCh\*Md. It contains multiple rows of color calibration data for various color targets.

delta E\* = 0.9

TUB registrering: 20150701-TN81/TN81LONP.PDF /.PS anvendelse for måling av display output, ingen separasjon TUB-material: code=rh4ta

se liggende filer: http://130.149.60.45/~farbmetrik/TN81/TN81.HTM teknisk informasjon: http://www.ps.bam.de eller http://130.149.60.45/~farbmetrik

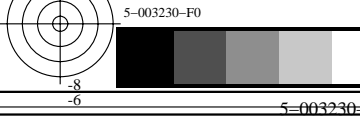


Table with columns for colorimetric data including HIC\*Fa, rgb\*Fa, iet\*Fa, hsi\*Fa, LabCh\*Fa, DE\*Fa, hsiMd, and LabCh\*Ma. It contains multiple rows of data for various color patches and conditions.

delta E\* = 6.5

prøveplansje TN81; 4(ISO/IEC 15775 + ISO/IEC TR 24705) farger og fargeavstander, ΔE\*, 3D=0, de=0, sRGB

input: rgb/cmyk -> rgba output: overføring til rgba

teknisk informasjon: http://www.ps.bam.de eller http://130.149.60.45/~farbmetrik

TUB registrering: 20150701-TN81/TN81LONP.PDF /.PS anvendelse for måling av display output, ingen separasjon TUB-material: code=rhata4



Table with 19 columns: n, HIC\*Fa, rgb\_Fa, icf\_Fa, hsi\_Fa, rgb\*Fa, LabCh\*Fa, DE\*Fa, hsi\_Md, rgb\*Ma, LabCh\*Ma. Rows list various color patches like R00Y\_012\_012a, B50R\_012\_012a, etc., with associated numerical values.

delta E\*\* = 8.3

prøveplansje TN81; 4(ISO/IEC 15775 + ISO/IEC TR 24705) farger og fargeavstander, ΔE\*, 3D=0, de=0, sRGB

input: rgb/cmyk -> rgb\_d output: overføring til rgb\_d

se lignende filer: http://130.149.60.45/~farbmetrik/TN81/TN81.HTM teknisk informasjon: http://www.ps.bam.de eller http://130.149.60.45/~farbmetrik

TUB registrering: 20150701-TN81/TN81LONP.PDF /.PS anvendelse for måling av display output, ingen separasjon TUB-material: code=rhata4

Table with columns: n, HIC\*Fa, rgb\_Fa, icf\_Fa, hsi\_Fa, rgb\*Fa, LabCh\*Fa, LabCh\*Fa, rgb\*Fa, LabCh\*Fa, DE\*Fa, hsi\_Md, rgb\*Md, LabCh\*Md. It contains 210 rows of colorimetric data for various printer models and paper types.

prøveplansje TN81; 4(ISO/IEC 15775 + ISO/IEC TR 24705) farger og fargeavstander, ΔE\*, 3D=0, de=0, sRGB

input: rgb/cmyk -> rgb\_d output: overføring til rgb\_d

se følgende filer: http://130.149.60.45/~farbmetrik/TN81/TN81.HTM teknisk informasjon: http://www.ps.bam.de eller http://130.149.60.45/~farbmetrik

TUB registrering: 20150701-TN81/TN81LONP.PDF /.PS anvendelse for måling av display output, ingen separasjon TUB-material: code=rhata

5-003630-F0

TN81-7N, 7/18-F

delta E\*\* = 10.2

5-003630-F0









http://130.149.60.45/~farbmetrik/TN81/TN81LONP.PDF /PS; overføring output  
N: ingen 3D-linearisering (OL) i fil (F) eller PS-startup (S), side 11/18

Table with columns for various colorimetric parameters: n, HIC\*Fa, rgb\*Fa, iet\*Fa, hsi\*Fa, rgb\*\*Fa, LabCh\*Fa, DE\*Fa, hsiMd, rgb\*\*Md, LabCh\*\*Md. It lists 566 rows of data for different color patches.

se lignende filer: http://130.149.60.45/~farbmetrik/TN81/TN81LONP.PDF /PS  
teknisk informasjon: http://www.ps.bam.de eller http://130.149.60.45/~farbmetrik

TUB registrering: 20150701-TN81/TN81LONP.PDF /PS  
anvendelse for måling av display output, ingen separasjon  
TUB-material: code=rhata

prøveplansje TN81; 4(ISO/IEC 15775 + ISO/IEC TR 24705) input: rgb/cmyk -> rgba  
farger og fargeavstander, ΔE\*, 3D=0, de=0, sRGB output: overføring til rgba

5-0031030-F0

TN810-7N, 11/18-F

delta E\*\* = 9.4

5-0031030-F0

C

M

Y

O

L

V

V

C





Table with 40 columns (n, HIC\*Fa, rgb\*Fa, icf\*Fa, hsi\*Fa, rgbb\*Fa, LabCh\*Fa, rrgb\*Fa, LabCh\*Fa, DE\*Fa, hsiMa, rgb\*Md, LabCh\*Md) and 80 rows of data. Includes headers for each column and numerical values for each row.

delta E\*\* = 7.3

se lignende filer: http://130.149.60.45/~farbmetrik/TN81/TN81.HTM teknisk informasjon: http://www.ps.bam.de eller http://130.149.60.45/~farbmetrik

TUB registrering: 20150701-TN81/TN81L0NP.PDF / .PS anvendelse for måling av display output, ingen separasjon TUB-material: code=rh4ta

Table with columns: n, HIC\*Fa, rgb\_Fa, icf\_Fa, hsi\_Fa, LabCh\*Fa, DE\*Fa, hsiMd, rgb\*Md, LabCh\*Md. It contains a large grid of numerical data for various color samples and conditions. At the bottom right of the table, it says 'delta E\*\* = 8.7'.

se lignende filer: <http://130.149.60.45/~farbmetrik/TN81/TN81.HTM>  
teknisk informasjon: <http://www.ps.bam.de> eller <http://130.149.60.45/~farbmetrik>

TUB registrering: 20150701-TN81/TN81LONP.PDF /PS  
anvendelse for måling av display output, ingen separasjon

TUB-material: code=rhata





se lignende filer: http://130.149.60.45/~farbmetrik/TN81/TN81.HTM  
teknisk informasjon: http://www.ps.bam.de eller http://130.149.60.45/~farbmetrik

Table with 18 columns: n, HiC\*Fa, rgb\_Fa, icf\_Fa, hsi\_Fa, rgb\*Fa, LabCh\*Fa, DE\*Fa, hsi\_Md, rgb\*Md, LabCh\*Md. The table contains 40 rows of data, each representing a different color or grayscale patch. The columns show various colorimetric measurements and device-specific parameters.

5-0031630-F0

TN810-7N, 17/18-F

delta E\* = 1.6

prøveplansje TN81; 4(ISO/IEC 15775 + ISO/IEC TR 24705)  
farger og fargeavstander,  $\Delta E^*$ , 3D=0, de=0, sRGB

input: rgb/cmyk -> rgba  
output: overføring til rgba

5-0031630-F0



TUB registrering: 20150701-TN81/TN81L0NP.PDF /.PS  
anvendelse for måling av display output, ingen separasjon

TUB-material: code=rh4ta

se liggende filer: <http://130.149.60.45/~farbmetrik/TN81/TN81.HTM>  
 teknisk informasjon: <http://www.ps.bam.de> eller <http://130.149.60.45/~farbmetrik>

n	HIC*Fa	rgb_Fa	ief_Fa	hsi_Fa	rgb*Fa	LabCh*Fa	rgb*Fa	LabCh*Fa	DE*Fa	hsiMd	rgb*Ma	LabCh*Ma			
1053	NW_086a	0.866 0.866	0.866 0.866	0.0 0.866	360 0.866	0.866 0.866 0.866	82.6 0.0 0.0	0.0 0.0 0.0	0.866 0.866 0.866	83.9 0.0 0.0	0.0 0.0 0.0	325.2 1.3 360	1.0 1.0 1.0	95.4 0.0 0.0	0.0 0.0 0.0
1054	NW_093a	0.933 0.933	0.933 0.933	0.0 0.933	360 0.933	0.933 0.933 0.933	89.0 0.0 0.0	0.0 0.0 0.0	0.933 0.933 0.933	89.7 0.0 0.0	0.0 0.0 0.0	325.2 0.6 360	1.0 1.0 1.0	95.4 0.0 0.0	0.0 0.0 0.0
1055	NW_100a	1.0 1.0 1.0	1.0 1.0 1.0	1.0 1.0	360 1.0	1.0 1.0 1.0	95.4 0.0 0.0	0.0 0.0 0.0	1.0 1.0 1.0	95.4 0.0 0.0	0.0 0.0 0.0	325.2 0.0 360	1.0 1.0 1.0	95.4 0.0 0.0	0.0 0.0 0.0
1056	NW_000a	0.0 0.0 0.0	0.0 0.0 0.0	0.0 0.0	360 0.0	0.0 0.0 0.0	0.0 0.0 0.0	0.0 0.0 0.0	0.0 0.0 0.0	0.0 0.0 0.0	0.0 0.0 0.0	325.2 0.0 360	1.0 1.0 1.0	95.4 0.0 0.0	0.0 0.0 0.0
1057	NW_006a	0.066 0.066	0.066 0.066	0.066 0.066	360 0.066	0.066 0.066 0.066	6.2 0.0 0.0	0.0 0.0 0.0	0.066 0.066 0.066	4.4 0.0 0.0	0.0 0.0 0.0	326.3 1.8 360	1.0 1.0 1.0	95.4 0.0 0.0	0.0 0.0 0.0
1058	NW_013a	0.133 0.133	0.133 0.133	0.133 0.133	360 0.133	0.133 0.133 0.133	12.6 0.0 0.0	0.0 0.0 0.0	0.133 0.133 0.133	12.0 0.0 0.0	0.0 0.0 0.0	325.6 0.6 360	1.0 1.0 1.0	95.4 0.0 0.0	0.0 0.0 0.0
1059	NW_020a	0.2 0.2 0.2	0.2 0.2 0.2	0.2 0.2	360 0.2	0.2 0.2 0.2	19.0 0.0 0.0	0.0 0.0 0.0	0.2 0.2 0.2	19.7 0.0 0.0	0.0 0.0 0.0	325.5 0.6 360	1.0 1.0 1.0	95.4 0.0 0.0	0.0 0.0 0.0
1060	NW_026a	0.266 0.266	0.266 0.266	0.266 0.266	360 0.266	0.266 0.266 0.266	25.3 0.0 0.0	0.0 0.0 0.0	0.266 0.266 0.266	27.0 0.0 0.0	0.0 0.0 0.0	325.4 1.6 360	1.0 1.0 1.0	95.4 0.0 0.0	0.0 0.0 0.0
1061	NW_033a	0.333 0.333	0.333 0.333	0.333 0.333	360 0.333	0.333 0.333 0.333	31.7 0.0 0.0	0.0 0.0 0.0	0.333 0.333 0.333	34.0 0.0 0.0	0.0 0.0 0.0	325.3 2.2 360	1.0 1.0 1.0	95.4 0.0 0.0	0.0 0.0 0.0
1062	NW_040a	0.4 0.4 0.4	0.4 0.4 0.4	0.4 0.4	360 0.4	0.4 0.4 0.4	38.1 0.0 0.0	0.0 0.0 0.0	0.4 0.4 0.4	40.8 0.0 0.0	0.0 0.0 0.0	325.3 2.6 360	1.0 1.0 1.0	95.4 0.0 0.0	0.0 0.0 0.0
1063	NW_046a	0.466 0.466	0.466 0.466	0.466 0.466	360 0.466	0.466 0.466 0.466	44.4 0.0 0.0	0.0 0.0 0.0	0.466 0.466 0.466	47.3 0.0 0.0	0.0 0.0 0.0	325.4 2.8 360	1.0 1.0 1.0	95.4 0.0 0.0	0.0 0.0 0.0
1064	NW_053a	0.533 0.533	0.533 0.533	0.533 0.533	360 0.533	0.533 0.533 0.533	50.8 0.0 0.0	0.0 0.0 0.0	0.533 0.533 0.533	53.7 0.0 0.0	0.0 0.0 0.0	325.3 2.9 360	1.0 1.0 1.0	95.4 0.0 0.0	0.0 0.0 0.0
1065	NW_060a	0.6 0.6 0.6	0.6 0.6 0.6	0.6 0.6	360 0.6	0.6 0.6 0.6	57.2 0.0 0.0	0.0 0.0 0.0	0.6 0.6 0.6	60.0 0.0 0.0	0.0 0.0 0.0	325.3 2.8 360	1.0 1.0 1.0	95.4 0.0 0.0	0.0 0.0 0.0
1066	NW_066a	0.666 0.666	0.666 0.666	0.666 0.666	360 0.666	0.666 0.666 0.666	63.5 0.0 0.0	0.0 0.0 0.0	0.666 0.666 0.666	66.1 0.0 0.0	0.0 0.0 0.0	325.2 2.6 360	1.0 1.0 1.0	95.4 0.0 0.0	0.0 0.0 0.0
1067	NW_073a	0.734 0.734	0.734 0.734	0.734 0.734	360 0.734	0.734 0.734 0.734	70.0 0.0 0.0	0.0 0.0 0.0	0.734 0.734 0.734	72.3 0.0 0.0	0.0 0.0 0.0	325.2 2.2 360	1.0 1.0 1.0	95.4 0.0 0.0	0.0 0.0 0.0
1068	NW_080a	0.8 0.8 0.8	0.8 0.8 0.8	0.8 0.8	360 0.8	0.8 0.8 0.8	76.3 0.0 0.0	0.0 0.0 0.0	0.8 0.8 0.8	78.1 0.0 0.0	0.0 0.0 0.0	325.2 1.8 360	1.0 1.0 1.0	95.4 0.0 0.0	0.0 0.0 0.0
1069	NW_086a	0.866 0.866	0.866 0.866	0.866 0.866	360 0.866	0.866 0.866 0.866	82.6 0.0 0.0	0.0 0.0 0.0	0.866 0.866 0.866	83.9 0.0 0.0	0.0 0.0 0.0	325.2 1.3 360	1.0 1.0 1.0	95.4 0.0 0.0	0.0 0.0 0.0
1070	NW_093a	0.933 0.933	0.933 0.933	0.933 0.933	360 0.933	0.933 0.933 0.933	89.0 0.0 0.0	0.0 0.0 0.0	0.933 0.933 0.933	89.7 0.0 0.0	0.0 0.0 0.0	325.2 0.6 360	1.0 1.0 1.0	95.4 0.0 0.0	0.0 0.0 0.0
1071	NW_100a	1.0 1.0 1.0	1.0 1.0 1.0	1.0 1.0	360 1.0	1.0 1.0 1.0	95.4 0.0 0.0	0.0 0.0 0.0	1.0 1.0 1.0	95.4 0.0 0.0	0.0 0.0 0.0	325.2 0.0 360	1.0 1.0 1.0	95.4 0.0 0.0	0.0 0.0 0.0
1072	NW_000a	0.0 0.0 0.0	0.0 0.0 0.0	0.0 0.0	360 0.0	0.0 0.0 0.0	0.0 0.0 0.0	0.0 0.0 0.0	0.0 0.0 0.0	0.0 0.0 0.0	0.0 0.0 0.0	325.2 0.0 360	1.0 1.0 1.0	95.4 0.0 0.0	0.0 0.0 0.0
1073	NW_100a	1.0 1.0 1.0	1.0 1.0 1.0	1.0 1.0	360 1.0	1.0 1.0 1.0	95.4 0.0 0.0	0.0 0.0 0.0	1.0 1.0 1.0	95.4 0.0 0.0	0.0 0.0 0.0	325.2 0.0 360	1.0 1.0 1.0	95.4 0.0 0.0	0.0 0.0 0.0
1074	R00Y_100_100a	1.0 0.0 0.0	1.0 0.0 0.0	1.0 1.0 0.5	390 1.0	0.0 0.0 0.0	50.4 76.9 64.5	100.4 40.0	1.0 0.0 0.0	50.4 76.9 64.5	100.4 39.9	0.0 389	1.0 0.0 0.0	50.4 76.9 64.5	100.4 40.0
1075	G50B_100_100a	0.0 1.0 1.0	1.0 1.0 1.0	1.0 0.5 210	0.0 1.0 1.0	86.8 -46.1 -13.5	48.1 196.3	0.0 1.0 1.0	86.8 -46.1 -13.5	48.1 196.3	0.0 210	0.0 1.0 1.0	86.8 -46.1 -13.5	48.1 196.3	0.0 210
1076	Y00G_100_100a	1.0 1.0 0.0	1.0 1.0 0.0	1.0 0.5 90	1.0 1.0 0.0	92.6 -20.7 90.7	93.0 102.8	1.0 1.0 0.0	92.6 -20.6 90.7	93.0 102.8	0.0 89	1.0 1.0 0.0	92.6 -20.7 90.7	93.0 102.8	0.0 89
1077	B00R_100_100a	0.0 0.0 1.0	1.0 1.0 1.0	1.0 0.5 270	0.0 0.0 1.0	30.3 76.0 -103.5	128.5 306.2	0.0 0.0 1.0	30.3 76.0 -103.5	128.5 306.2	0.0 270	0.0 0.0 1.0	30.3 76.0 -103.5	128.5 306.2	0.0 270
1078	G00B_100_100a	0.0 1.0 0.0	1.0 1.0 0.0	1.0 0.5 150	0.0 1.0 0.0	83.6 -82.7 79.8	115.0 136.0	0.0 1.0 0.0	83.6 -82.7 79.8	115.0 136.0	0.0 149	0.0 1.0 0.0	83.6 -82.7 79.8	115.0 136.0	0.0 149
1079	B50R_100_100a	1.0 0.0 1.0	1.0 1.0 1.0	1.0 0.5 330	1.0 0.0 1.0	57.2 94.3 -58.4	110.9 328.2	1.0 0.0 1.0	57.2 94.3 -58.4	111.0 328.2	0.0 330	1.0 0.0 1.0	57.2 94.3 -58.4	110.9 328.2	0.0 330

delta E\* = 1.0

TUB registrering: 20150701-TN81/TN81L0NP.PDF /.PS  
 anvendelse for måling av display output, ingen separasjon

TUB-material: code=rh4ta

