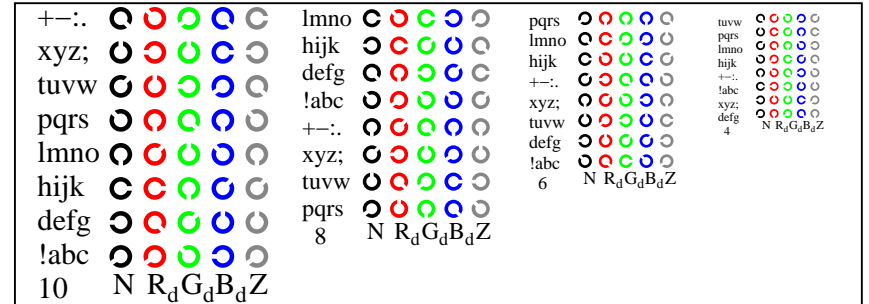
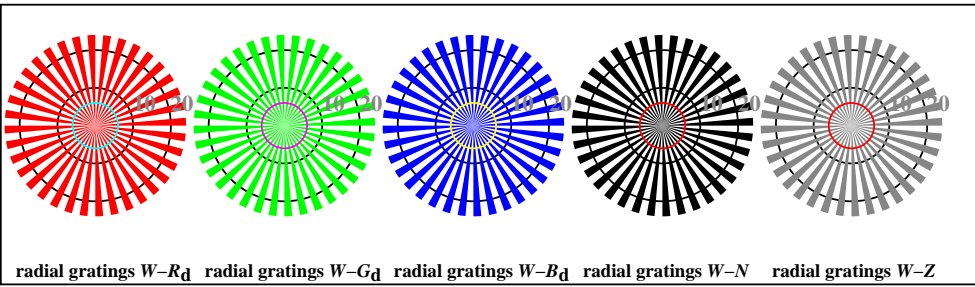


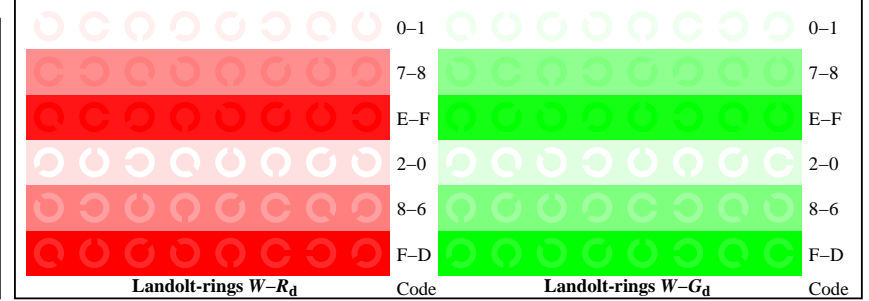
TN811-1, Picture D4Wd: 16 equidistant steps  $W-R_d$ ;  $W-G_d$ ;  $W-B_d$ ;  $W-N$ ;  $rgb/cmy0 \rightarrow rgb_d$  setrgbcolor



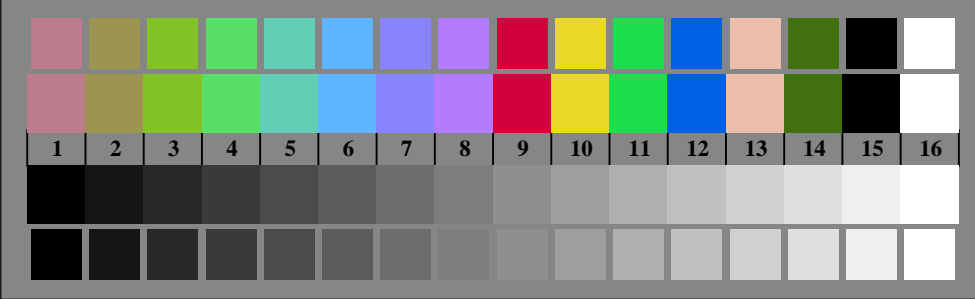
TN811-3, Picture D5Wd: Script Landolt-rings  $N$ ;  $R_d$ ;  $G_d$ ;  $B_d$ ;  $Z$ ; PS operator  $rgb \rightarrow rgb_d$  setrgbcolor



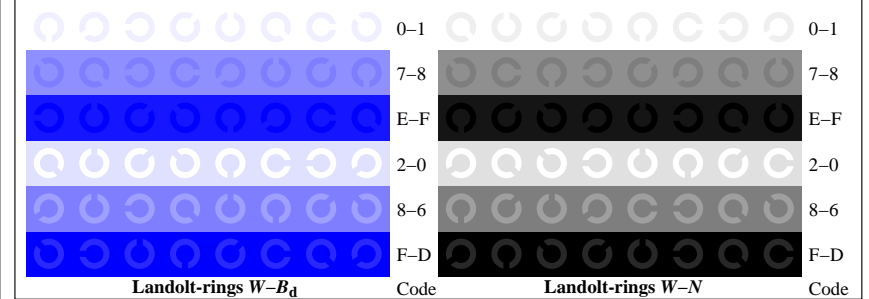
TN810-5, Picture D2Wd: radial gratings  $W-R_d$ ;  $W-G_d$ ;  $W-B_d$ ;  $W-N$ ; PS operator  $rgb \rightarrow rgb_d$  setrgbcolor



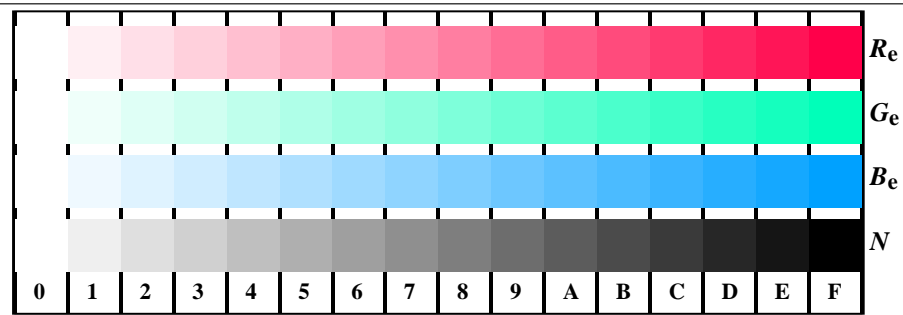
TN811-5, Picture D6Wd: Landolt-rings  $W-R_d$ ;  $W-G_d$ ; PS operator  $rgb \rightarrow rgb_d$  setrgbcolor



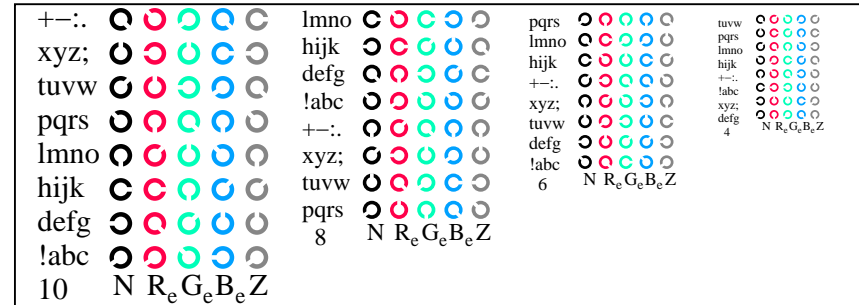
TN810-7, Picture D3Wd: 14 CIE-test colours and 2 + 16 grey steps (sf);  $rgb/cmy0 \rightarrow rgb_d$  setrgbcolor



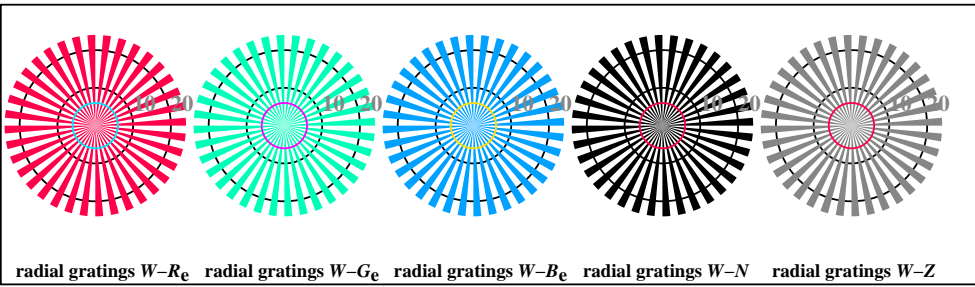
TN811-7, Picture D7Wd: Landolt-rings  $W-B_d$ ;  $W-N$ ; PS operator  $rgb \rightarrow rgb_d$  setrgbcolor



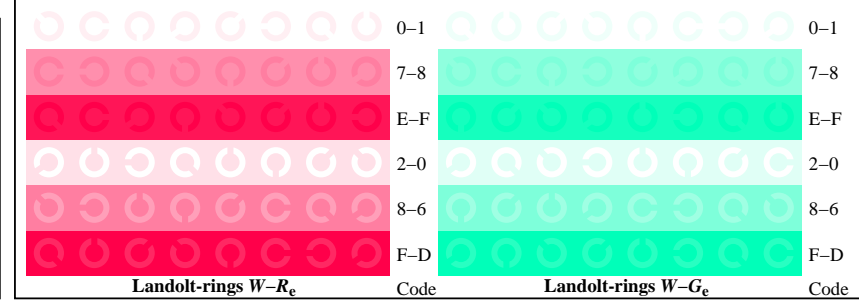
TN811-1, Picture D4We: 16 equidistant steps  $W-R_e$ ;  $W-G_e$ ;  $W-B_e$ ;  $W-N$ ;  $rgb/cmy0 \rightarrow rgb_e$  *setrgbcolor*



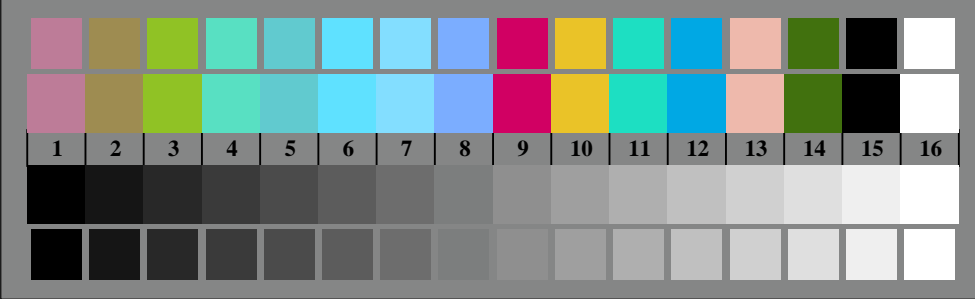
TN811-3, Picture D5We: Script Landolt-rings  $N$ ;  $R_e$ ;  $G_e$ ;  $B_e$ ;  $Z$ ; *PS operator rgb \rightarrow rgb\_e setrgbcolor*



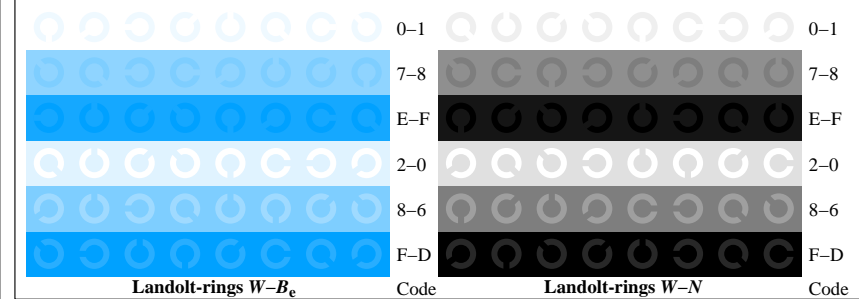
TN810-5, Picture D2We: radial gratings  $W-R_e$ ;  $W-G_e$ ;  $W-B_e$ ;  $W-N$ ; *PS operator rgb \rightarrow rgb\_e setrgbcolor*



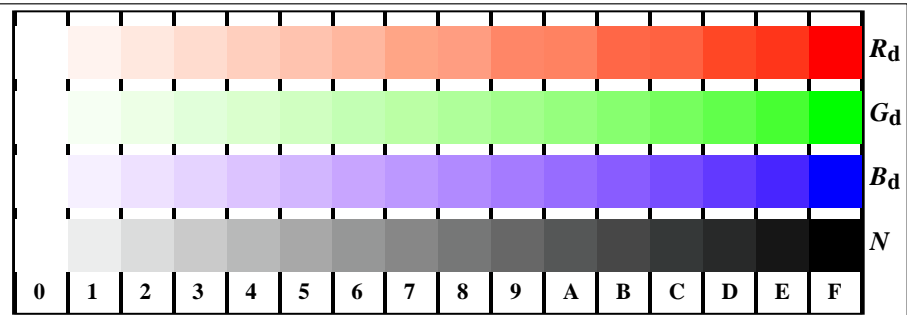
TN811-5, Picture D6We: Landolt-rings  $W-R_e$ ;  $W-G_e$ ; *PS operator rgb \rightarrow rgb\_e setrgbcolor*



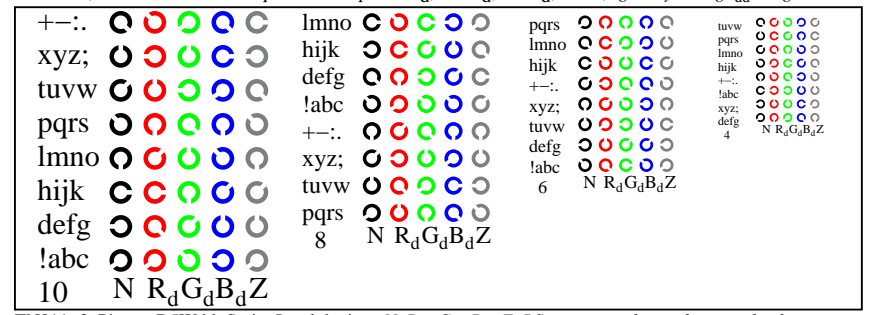
TN810-7, Picture D3We: 14 CIE-test colours and 2 + 16 grey steps (sf);  $rgb/cmy0 \rightarrow rgb_e$  *setrgbcolor*



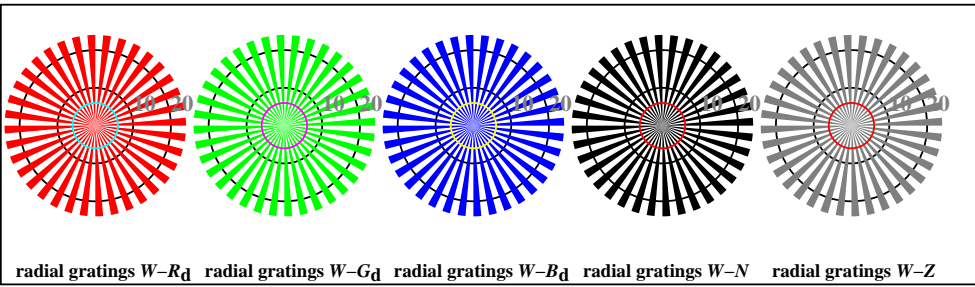
TN811-7, Picture D7We: Landolt-rings  $W-B_e$ ;  $W-N$ ; *PS operator rgb \rightarrow rgb\_e setrgbcolor*



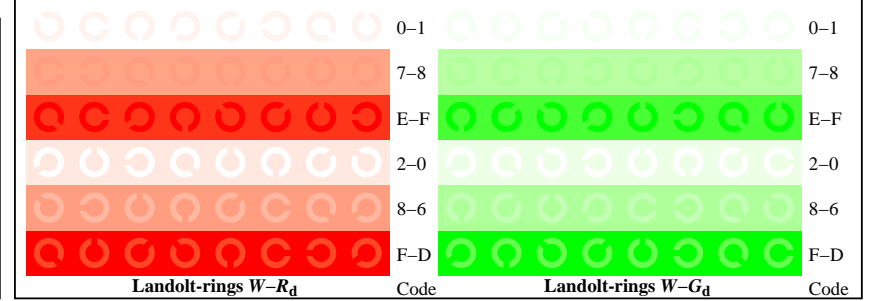
TN811-1, Picture D4Wdd: 16 equidistant steps  $W-R_d$ ;  $W-G_d$ ;  $W-B_d$ ;  $W-N$ ;  $rgb/cmy_0 \rightarrow rgb_{dd}$  setrgbcolor



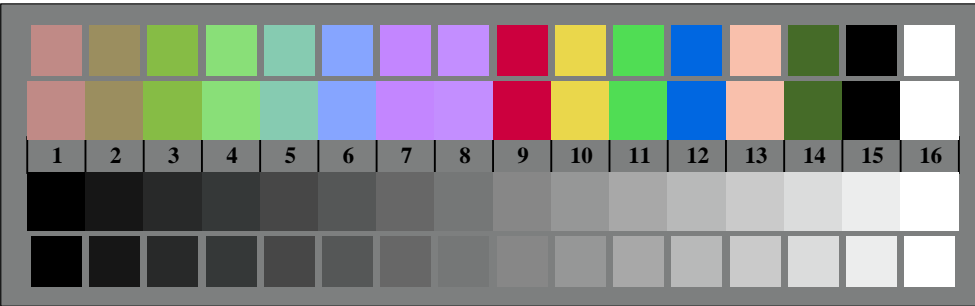
TN811-3, Picture D5Wdd: Script Landolt-rings  $N$ ;  $R_d$ ;  $G_d$ ;  $B_d$ ;  $Z$ ; PS operator  $rgb \rightarrow rgb_{dd}$  setrgbcolor



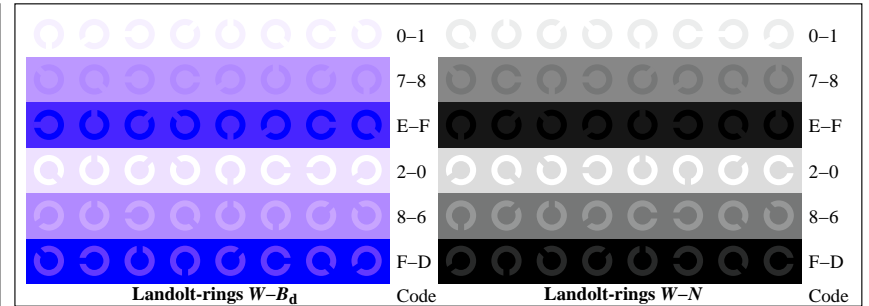
TN810-5, Picture D2Wdd: radial gratings  $W-R_d$ ;  $W-G_d$ ;  $W-B_d$ ;  $W-N$ ; PS operator  $rgb \rightarrow rgb_{dd}$  setrgbcolor



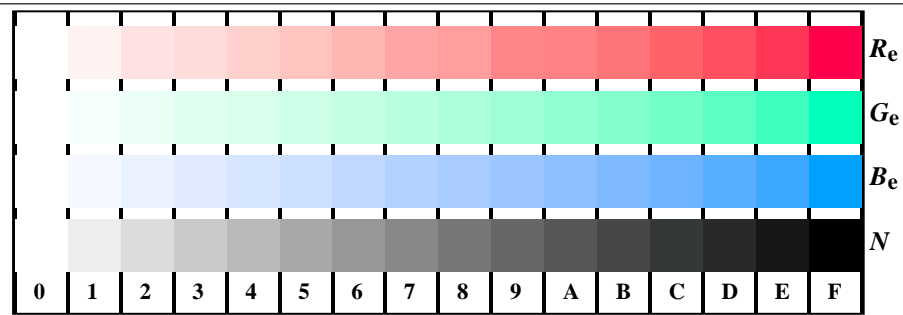
TN811-5, Picture D6Wdd: Landolt-rings  $W-R_d$ ;  $W-G_d$ ; PS operator  $rgb \rightarrow rgb_{dd}$  setrgbcolor



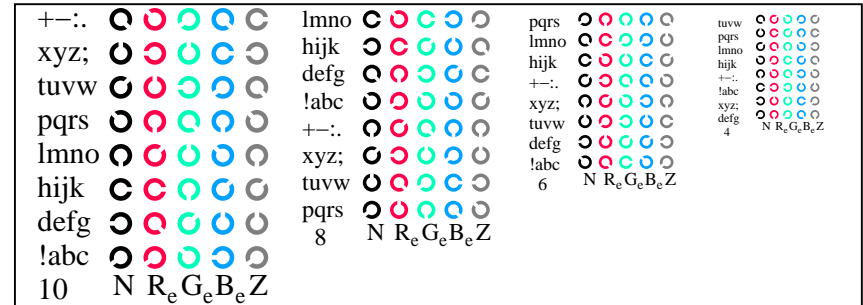
TN810-7, Picture D3Wdd: 14 CIE-test colours and 2 + 16 grey steps (sf);  $rgb/cmy_0 \rightarrow rgb_{dd}$  setrgbcolor



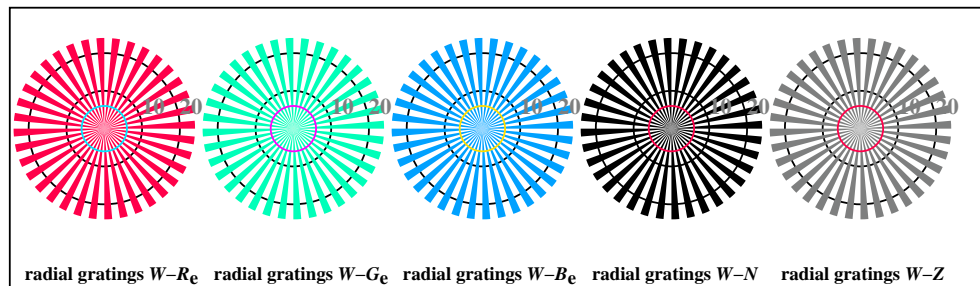
TN811-7, Picture D7Wdd: Landolt-rings  $W-B_d$ ;  $W-N$ ; PS operator  $rgb \rightarrow rgb_{dd}$  setrgbcolor



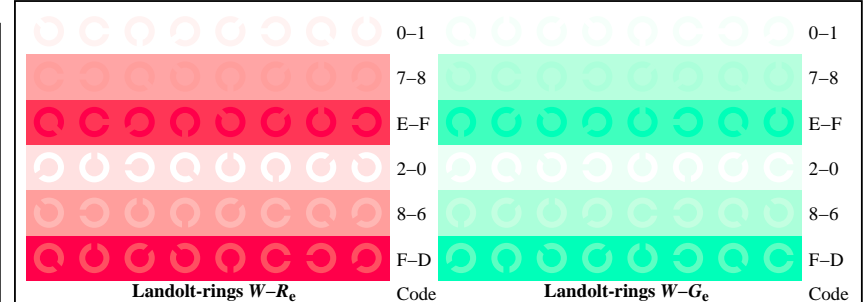
TN811-1, Picture D4Wde: 16 equidistant steps  $W-R_e$ ;  $W-G_e$ ;  $W-B_e$ ;  $W-N$ ;  $rgb/cmy0 \rightarrow rgb_{de}$  setrgbcolor



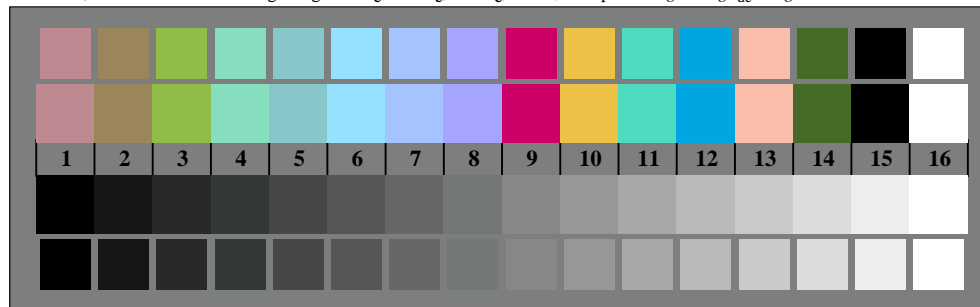
TN811-3, Picture D5Wde: Script Landolt-rings  $N$ ;  $R_e$ ;  $G_e$ ;  $B_e$ ;  $Z$ ; PS operator  $rgb \rightarrow rgb_{de}$  setrgbcolor



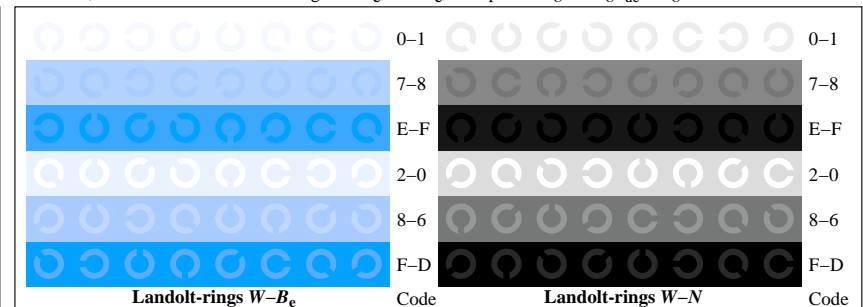
TN810-5, Picture D2Wde: radial gratings  $W-R_e$ ;  $W-G_e$ ;  $W-B_e$ ;  $W-N$ ; PS operator  $rgb \rightarrow rgb_{de}$  setrgbcolor



TN811-5, Picture D6Wde: Landolt-rings  $W-R_e$ ;  $W-G_e$ ; PS operator  $rgb \rightarrow rgb_{de}$  setrgbcolor



TN810-7, Picture D3Wde: 14 CIE-test colours and 2 + 16 grey steps (sf);  $rgb/cmy0 \rightarrow rgb_{de}$  setrgbcolor



TN811-7, Picture D7Wde: Landolt-rings  $W-B_e$ ;  $W-N$ ; PS operator  $rgb \rightarrow rgb_{de}$  setrgbcolor