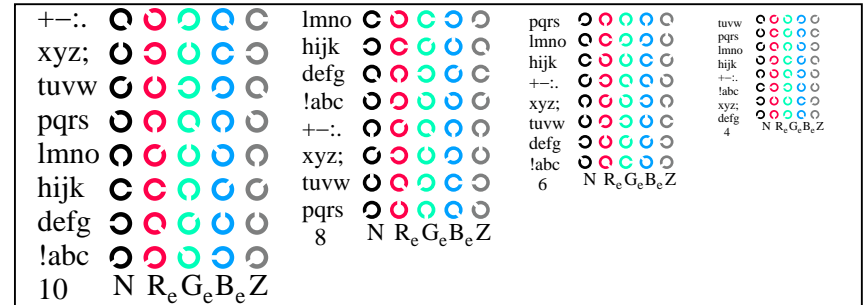
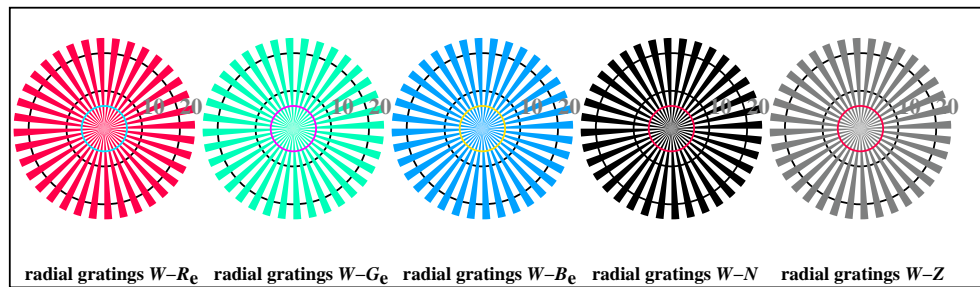


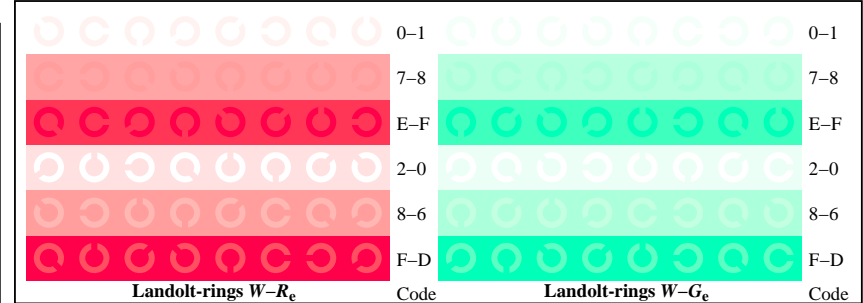
TN811-1, Picture D4Wde: 16 equidistant steps $W-R_e$; $W-G_e$; $W-B_e$; $W-N$; $rgb/cmy0 \rightarrow rgb_{de}$ setrgbcolor



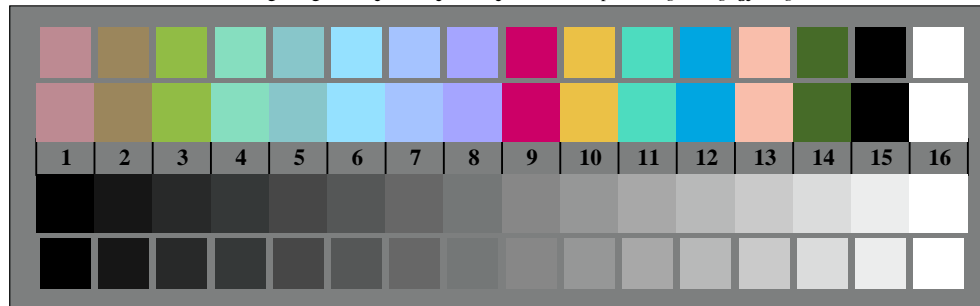
TN811-3, Picture D5Wde: Script Landolt-rings N ; R_e ; G_e ; B_e ; Z ; PS operator $rgb \rightarrow rgb_{de}$ setrgbcolor



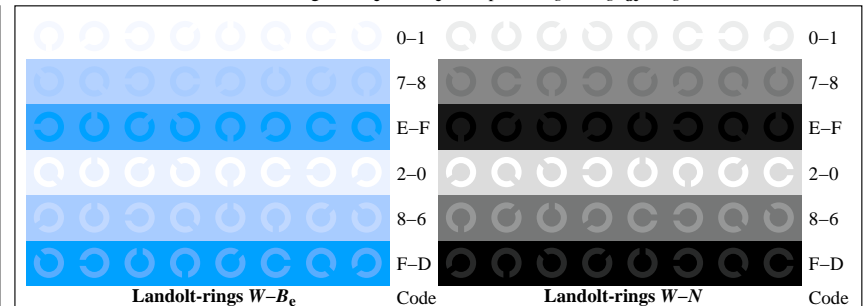
TN810-5, Picture D2Wde: radial gratings $W-R_e$; $W-G_e$; $W-B_e$; $W-N$; PS operator $rgb \rightarrow rgb_{de}$ setrgbcolor



TN811-5, Picture D6Wde: Landolt-rings $W-R_e$; $W-G_e$; PS operator $rgb \rightarrow rgb_{de}$ setrgbcolor



TN810-7, Picture D3Wde: 14 CIE-test colours and 2 + 16 grey steps (sf); $rgb/cmy0 \rightarrow rgb_{de}$ setrgbcolor



TN811-7, Picture D7Wde: Landolt-rings $W-B_e$; $W-N$; PS operator $rgb \rightarrow rgb_{de}$ setrgbcolor