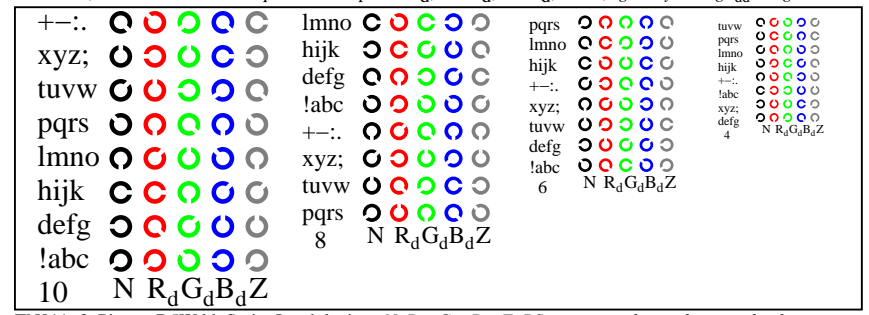
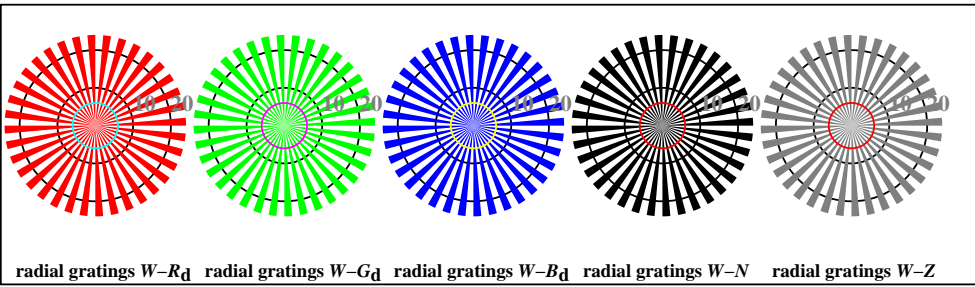


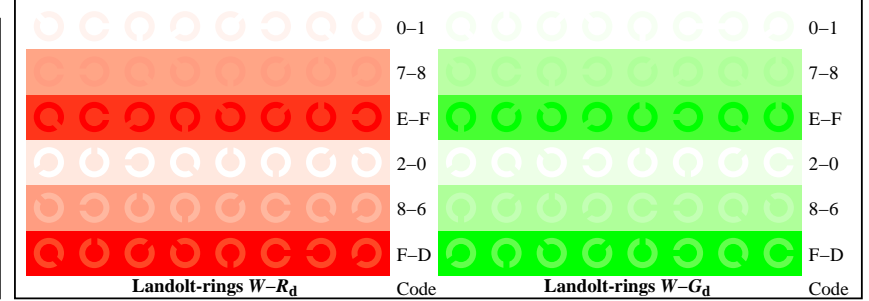
TN811-1, Picture D4Wdd: 16 equidistant steps $W-R_d$; $W-G_d$; $W-B_d$; $W-N$; $rgb/cmy_0 \rightarrow rgb_{dd}$ setrgbcolor



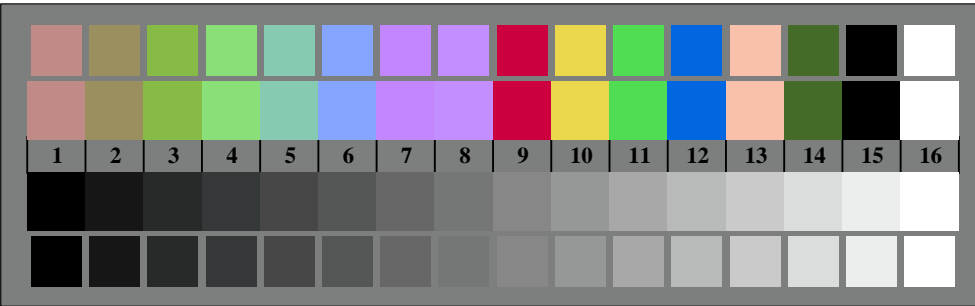
TN811-3, Picture D5Wdd: Script Landolt-rings N ; R_d ; G_d ; B_d ; Z ; PS operator $rgb \rightarrow rgb_{dd}$ setrgbcolor



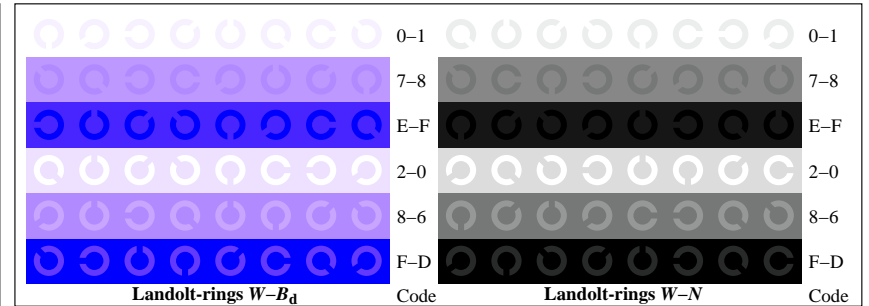
TN810-5, Picture D2Wdd: radial gratings $W-R_d$; $W-G_d$; $W-B_d$; $W-N$; PS operator $rgb \rightarrow rgb_{dd}$ setrgbcolor



TN811-5, Picture D6Wdd: Landolt-rings $W-R_d$; $W-G_d$; PS operator $rgb \rightarrow rgb_{dd}$ setrgbcolor



TN810-7, Picture D3Wdd: 14 CIE-test colours and 2 + 16 grey steps (sf); $rgb/cmy_0 \rightarrow rgb_{dd}$ setrgbcolor



TN811-7, Picture D7Wdd: Landolt-rings $W-B_d$; $W-N$; PS operator $rgb \rightarrow rgb_{dd}$ setrgbcolor