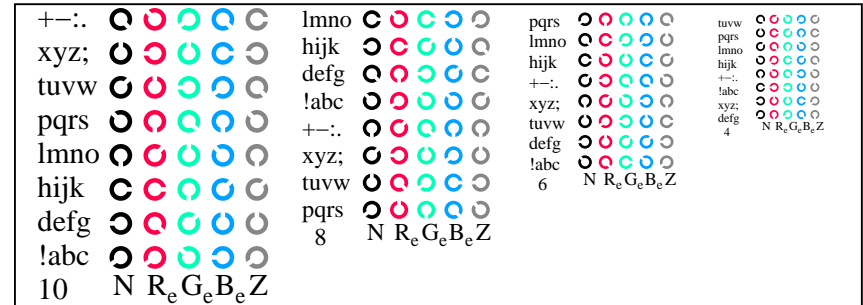
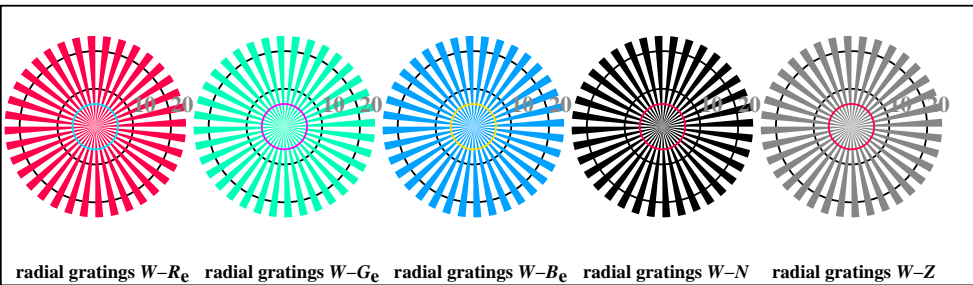


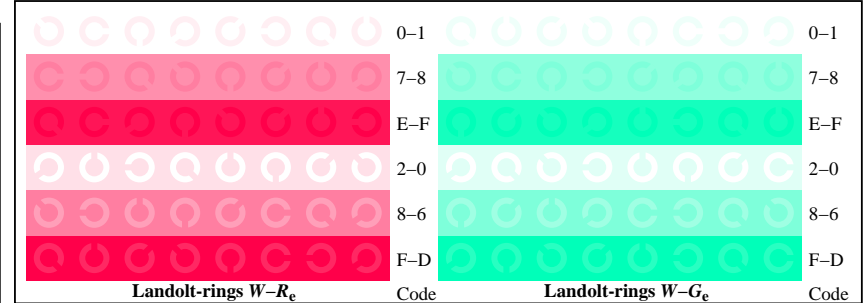
TN811-1, Picture D4We: 16 equidistant steps $W-R_e$; $W-G_e$; $W-B_e$; $W-N$; $rgb/cmy0 \rightarrow rgb_e$ *setrgbcolor*



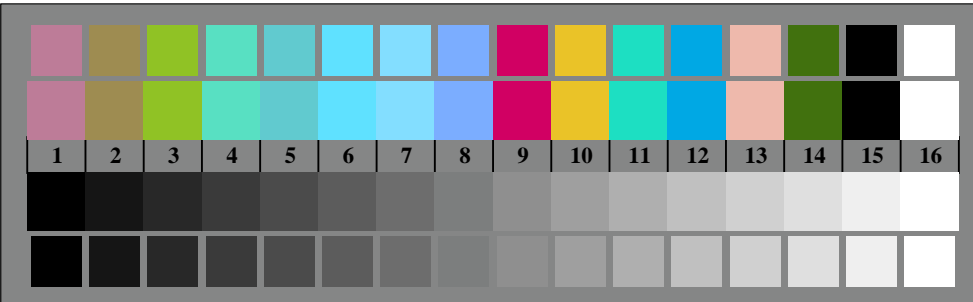
TN811-3, Picture D5We: Script Landolt-rings N ; R_e ; G_e ; B_e ; Z ; *PS operator rgb \rightarrow rgb_e setrgbcolor*



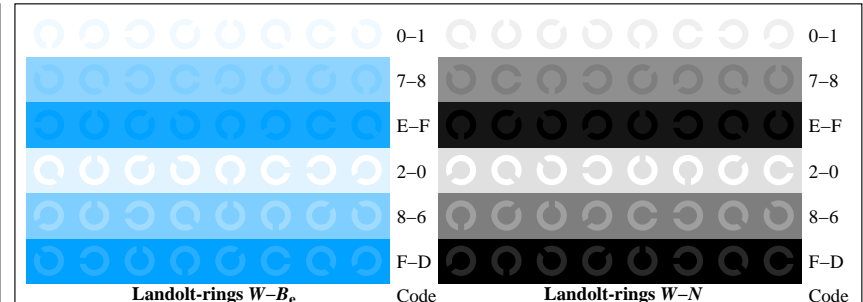
TN810-5, Picture D2We: radial gratings $W-R_e$; $W-G_e$; $W-B_e$; $W-N$; *PS operator rgb \rightarrow rgb_e setrgbcolor*



TN811-5, Picture D6We: Landolt-rings $W-R_e$; $W-G_e$; *PS operator rgb \rightarrow rgb_e setrgbcolor*



TN810-7, Picture D3We: 14 CIE-test colours and 2 + 16 grey steps (sf); $rgb/cmy0 \rightarrow rgb_e$ *setrgbcolor*



TN811-7, Picture D7We: Landolt-rings $W-B_e$; $W-N$; *PS operator rgb \rightarrow rgb_e setrgbcolor*