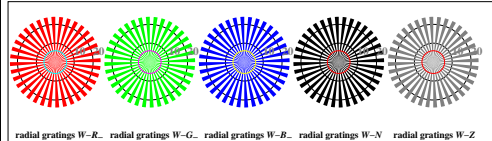


http://130.149.60.45/~farbmetrik/TN80/TN80L0N1.TXT /PS; start output
N: ingen 3D-linearisering (OL) i fil (F) eller PS-startup (S), side 1/1

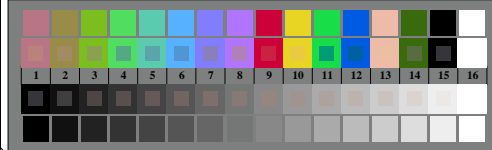
se liggende filer: http://130.149.60.45/~farbmetrik/TN80/TN80.HTM
teknisk informasjon: http://www.ps.bam.de eller http://130.149.60.45/~farbmetrik



TN800-3, Picture D1W--; and 2 + 16 grey steps (sf); ; PS operator 3 colorimage

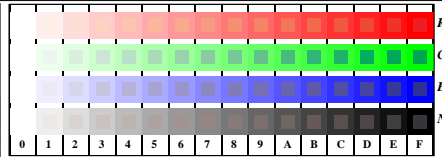


TN800-5, Picture D2W--: radial gratings W-R., W-G., W-B., W-N; PS operator rgb->rgb_setrgbcolor



TN800-7, Picture D3W--: 14 CIE-test colours and 2 + 16 grey steps (sf); rgb/cmy0 setrgb/cmyk/color

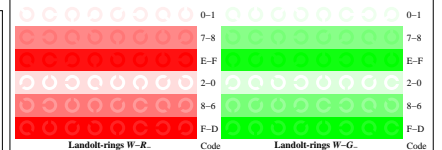
prøveplansje TN80; 4(ISO/IEC 15775 + ISO/IEC TR 24705)
kromatisk prøveplansje RGB



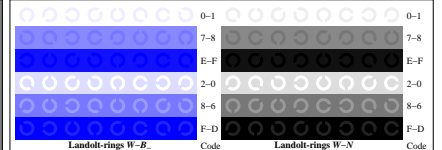
TN801-1, Picture D4W--: 16 equidistant steps W-R.; W-G.; W-B.; W-N; rgb/cmy0 setrgb/cmyk/color



TN801-3, Picture D5W--: Script Landolt-rings N.; R.; G.; B.; Z; PS operator rgb->rgb_setrgbcolor



TN801-5, Picture D6W--: Landolt-rings W-R.; W-G.; PS operator rgb_setrgbcolor



TN801-7, Picture D7W--: Landolt-rings W-B.; W-N; PS operator rgb_setrgbcolor

input: rgb/cmyk -> w/rgb/cmyk_
output: ingen endring

TUB registrering: 20150701-TN80/TN80L0N1.TXT /PS
anvendelse for måling av display output

TUB-material: code=matata

