

http://130.149.60.45/~farbmetrik/TN80/TN80L0NP.PDF /.PS; overføring output
N: ingen 3D-linearisering (OL) i fil (F) eller PS-startup (S), side 2/2

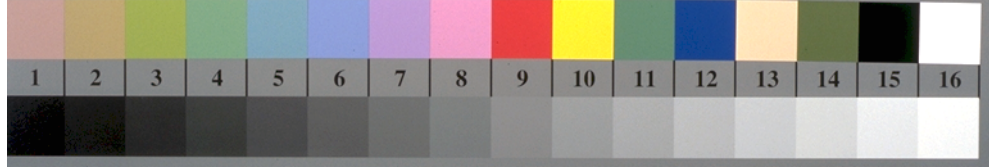
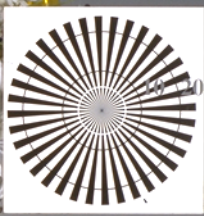
se lignende filer: http://130.149.60.45/~farbmetrik/TN80/TN80.HTM
teknisk informasjon: http://www.ps.bam.de eller http://130.149.60.45/~farbmetrik

TUB registrering: 20150701-TN80/TN80L0NP.PDF /.PS
anvendelse for måling av display output, ingen separasjon

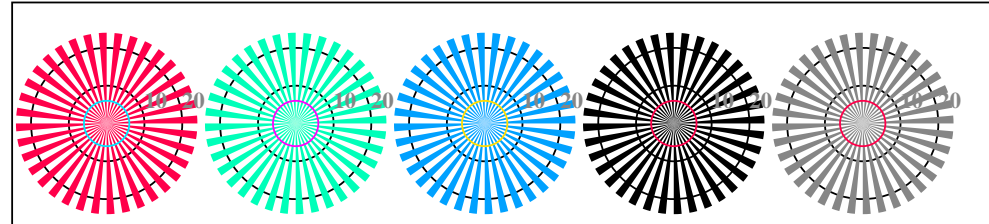
TUB-material: code=rh4ta



192 x 128
384 x 256
768 x 512
1536 x 1024
3072 x 2048

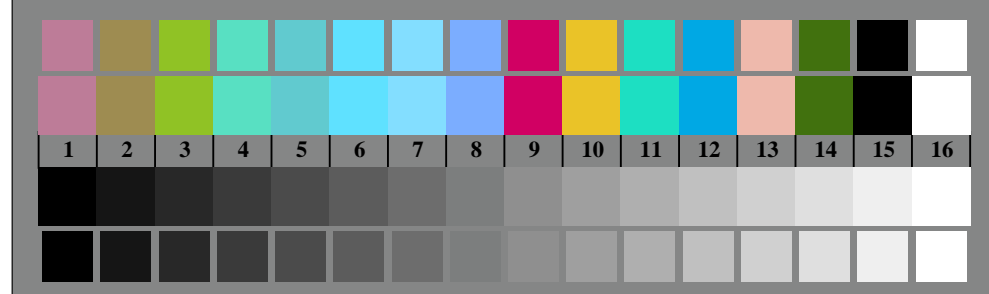


TN800-3, Picture D1We: and 2 + 16 grey steps (sf); ; PS operator 3 colorimage

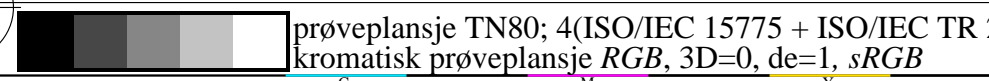


radial gratings W-Re radial gratings W-Ge radial gratings W-Be radial gratings W-N radial gratings W-Z

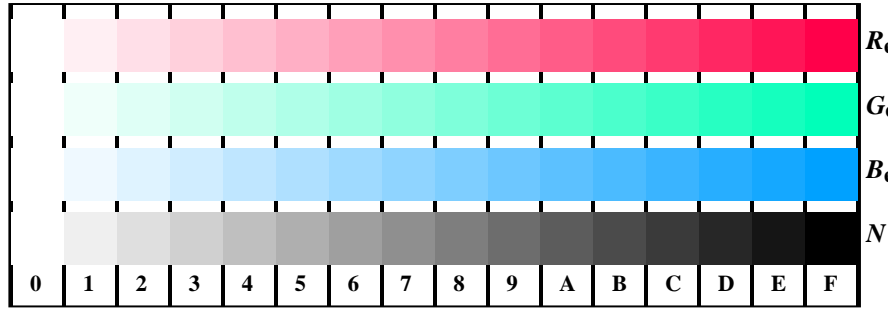
TN800-5, Picture D2We: radial gratings W-Re; W-Ge; W-Be; W-N; PS operator rgb->rgb_e setrgbcolor



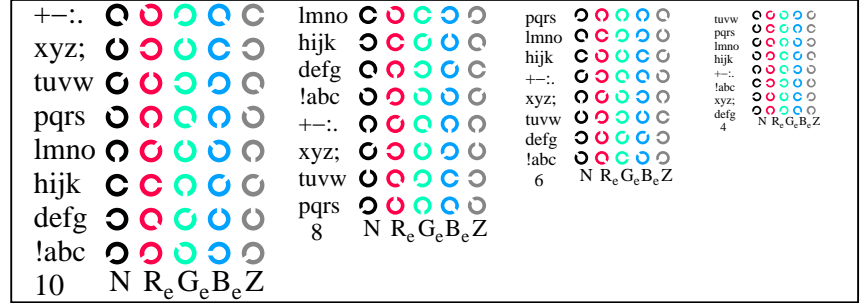
TN800-7, Picture D3We: 14 CIE-test colours and 2 + 16 grey steps (sf); rgb/cmy0->rgb_e setrgbcolor



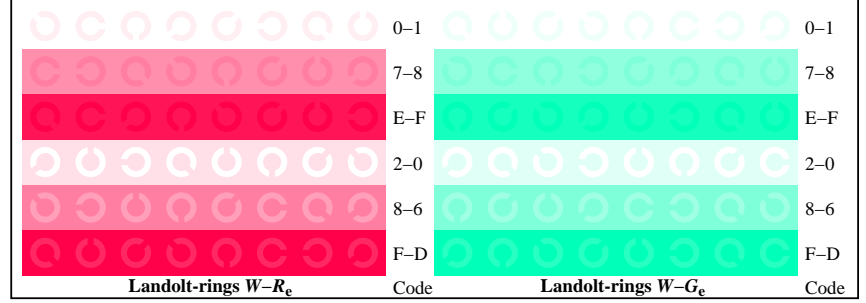
prøveplansje TN80; 4(ISO/IEC 15775 + ISO/IEC TR 24705)
kromatisk prøveplansje RGB, 3D=0, de=1, sRGB



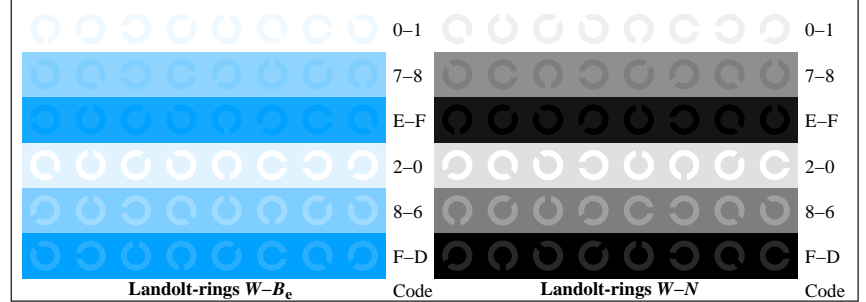
TN801-1, Picture D4We: 16 equidistant steps W-Re; W-Ge; W-Be; W-N; rgb/cmy0->rgb_e setrgbcolor



TN801-3, Picture D5We: Script Landolt-rings N; Re; Ge; Be; Z; PS operator rgb->rgb_e setrgbcolor



TN801-5, Picture D6We: Landolt-rings W-Re; W-Ge; PS operator rgb->rgb_e setrgbcolor



TN801-7, Picture D7We: Landolt-rings W-Be; W-N; PS operator rgb->rgb_e setrgbcolor

input: rgb/cmyk -> rgb_e
output: overføring til rgb_e