

http://130.149.60.45/~farbmetrik/TN80/TN80L0NP.PDF /.PS; overføring output  
N: ingen 3D-linearisering (OL) i fil (F) eller PS-startup (S), side 2/2

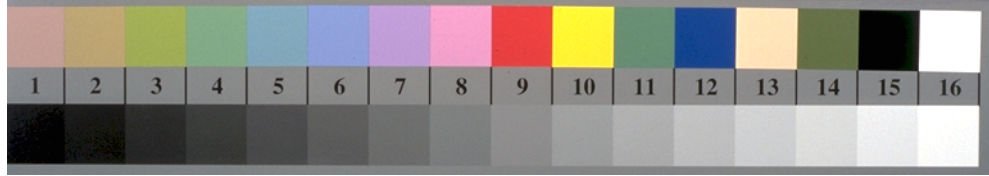
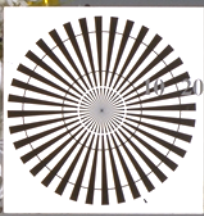
se lignende filer: http://130.149.60.45/~farbmetrik/TN80/TN80.HTM  
teknisk informasjon: http://www.ps.bam.de eller http://130.149.60.45/~farbmetrik

TUB registrering: 20150701-TN80/TN80L0NP.PDF /.PS  
anvendelse for måling av display output, ingen separasjon

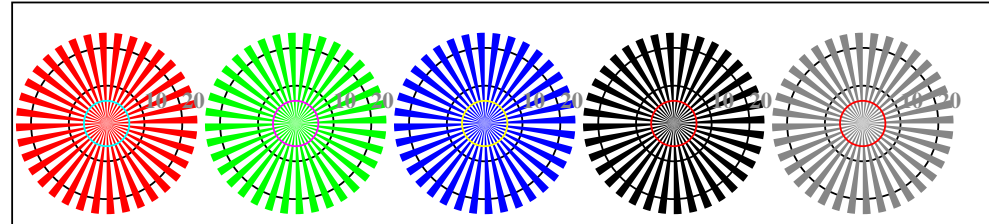
TUB-material: code=rh4ta



192 x 128  
384 x 256  
768 x 512  
1536 x 1024  
3072 x 2048

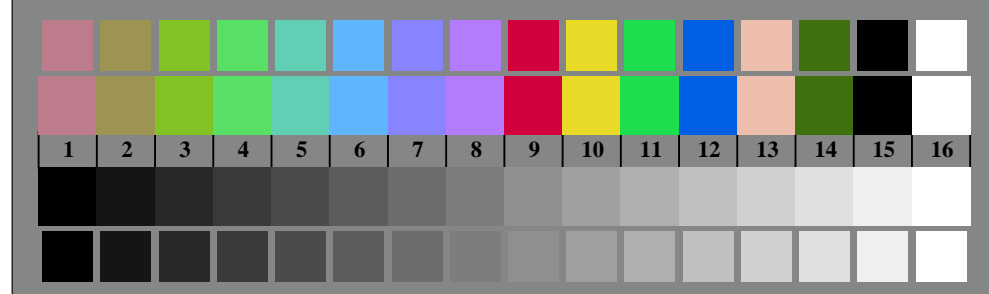


TN800-3, Picture D1Wd: and 2 + 16 grey steps (sf); ; PS operator 3 colorimage

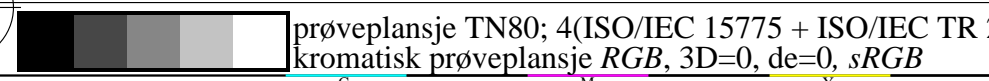


radial gratings W-R<sub>d</sub> radial gratings W-G<sub>d</sub> radial gratings W-B<sub>d</sub> radial gratings W-N radial gratings W-Z

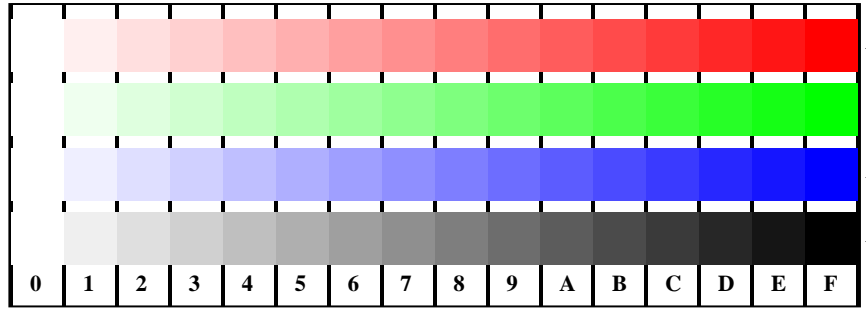
TN800-5, Picture D2Wd: radial gratings W-R<sub>d</sub>; W-G<sub>d</sub>; W-B<sub>d</sub>; W-N; PS operator rgb->rgb<sub>d</sub> setrgbcolor



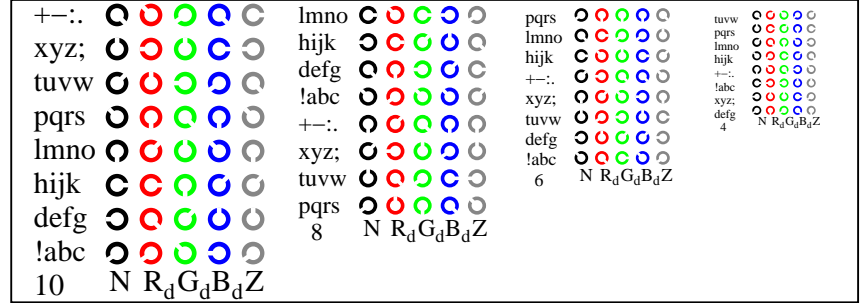
TN800-7, Picture D3Wd: 14 CIE-test colours and 2 + 16 grey steps (sf); rgb/cmy0->rgb<sub>d</sub> setrgbcolor



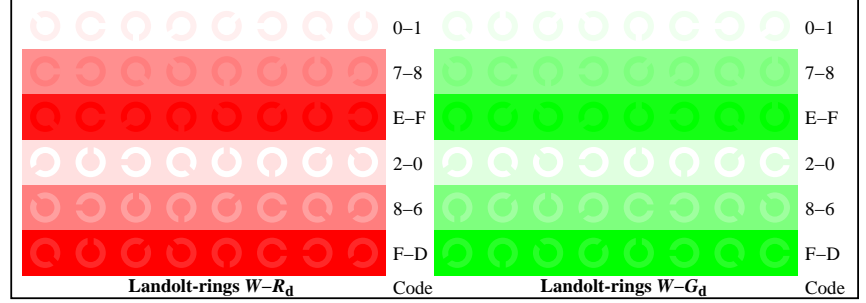
prøveplansje TN80; 4(ISO/IEC 15775 + ISO/IEC TR 24705)  
kromatisk prøveplansje RGB, 3D=0, de=0, sRGB



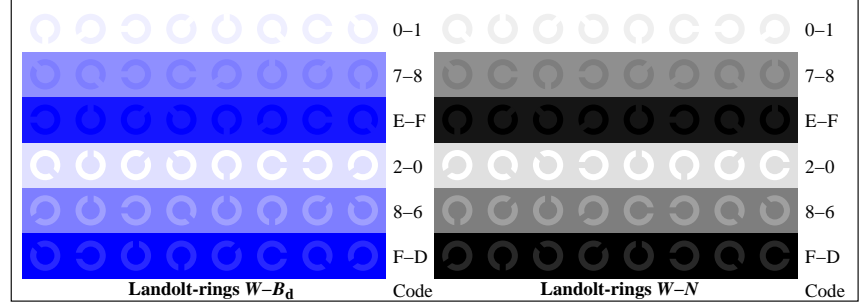
TN801-1, Picture D4Wd: 16 equidistant steps W-R<sub>d</sub>; W-G<sub>d</sub>; W-B<sub>d</sub>; W-N; rgb/cmy0->rgb<sub>d</sub> setrgbcolor



TN801-3, Picture D5Wd: Script Landolt-rings N; R<sub>d</sub>; G<sub>d</sub>; B<sub>d</sub>; Z; PS operator rgb->rgb<sub>d</sub> setrgbcolor



TN801-5, Picture D6Wd: Landolt-rings W-R<sub>d</sub>; W-G<sub>d</sub>; PS operator rgb->rgb<sub>d</sub> setrgbcolor



TN801-7, Picture D7Wd: Landolt-rings W-B<sub>d</sub>; W-N; PS operator rgb->rgb<sub>d</sub> setrgbcolor

input: rgb/cmyk -> rgb<sub>d</sub>  
output: overføring til rgb<sub>d</sub>