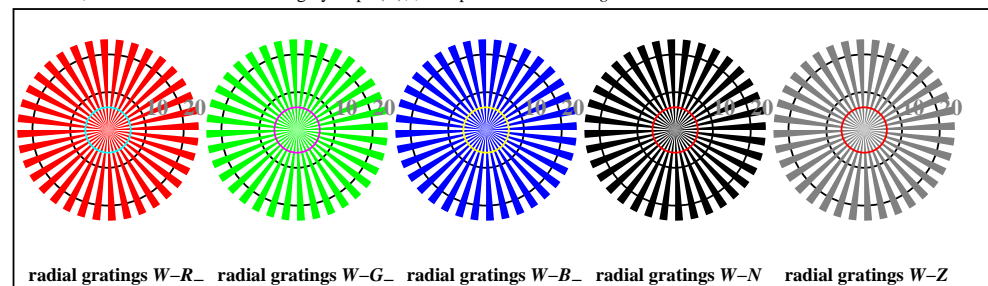
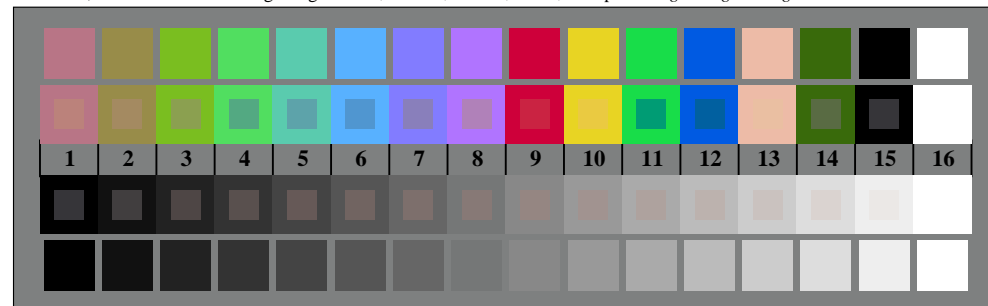




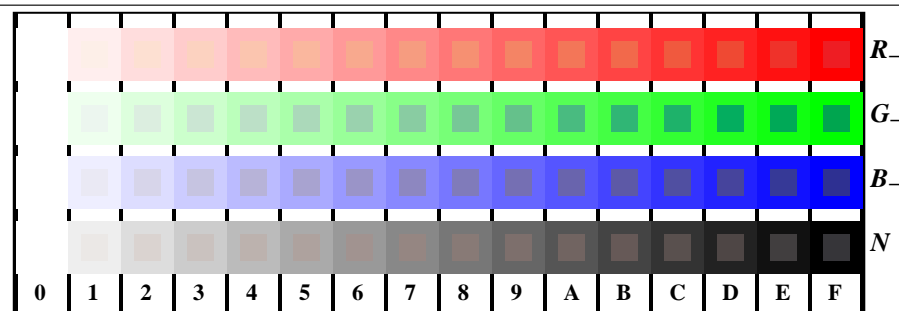
TN800-3, Picture D1W-: and 2 + 16 grey steps (sf); PS operator 3 colorimage



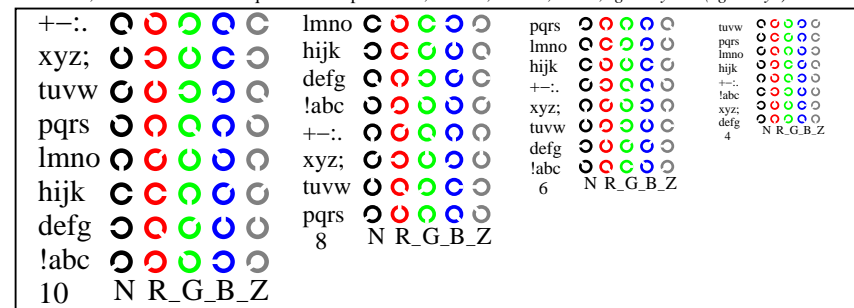
radial gratings W-R_ radial gratings W-G_ radial gratings W-B_ radial gratings W-N radial gratings W-Z
TN800-5, Picture D2W-: radial gratings W-R_ ; W-G_ ; W-B_ ; W-N ; PS operator rgb->rgb_setrgbcolor



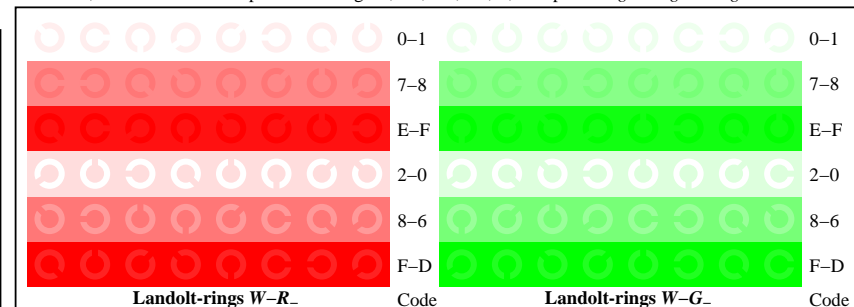
TN800-7, Picture D3W-: 14 CIE-test colours and 2 + 16 grey steps (sf); rgb/cmy0 set(rgb/cmyk)color



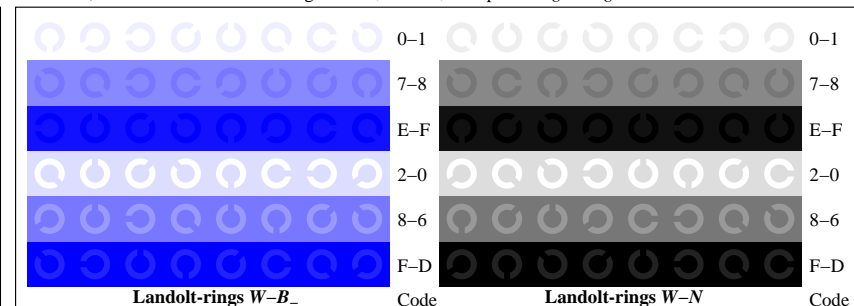
TN801-1, Picture D4W-: 16 equidistant steps W-R_ ; W-G_ ; W-B_ ; W-N ; rgb/cmy0 set(rgb/cmyk)color



TN801-3, Picture D5W-: Script Landolt-rings N; R_ ; G_ ; B_ ; Z; PS operator rgb->rgb_setrgbcolor



TN801-5, Picture D6W-: Landolt-rings W-R_ ; W-G_ ; PS operator rgb_setrgbcolor



TN801-7, Picture D7W-: Landolt-rings W-B_ ; W-N ; PS operator rgb_setrgbcolor