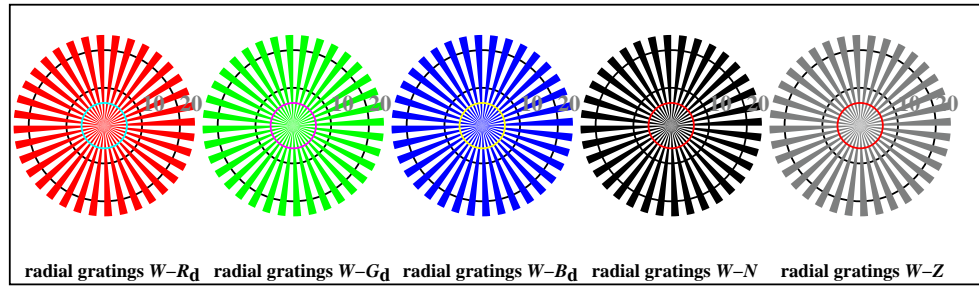
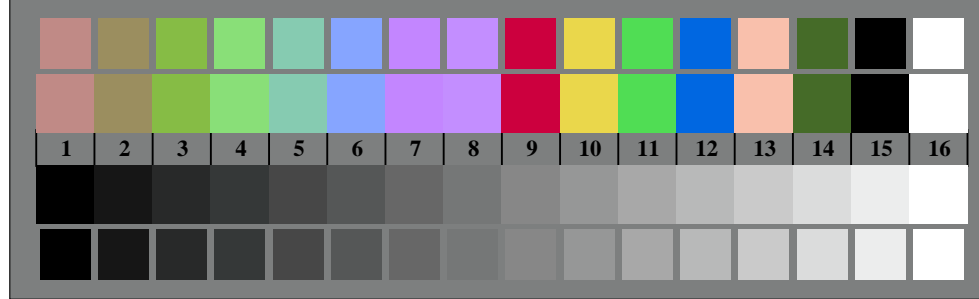




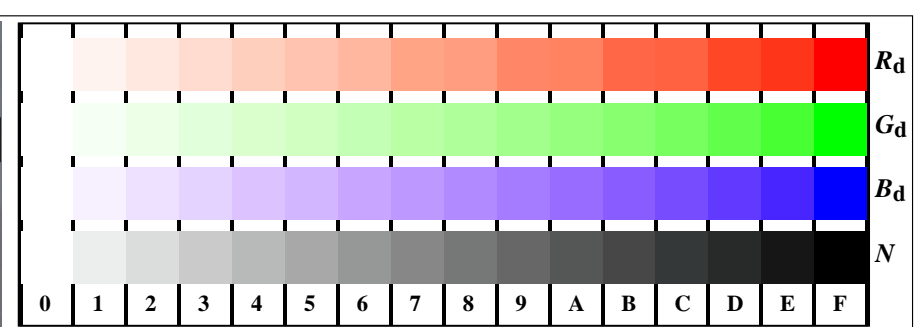
TN800-3, Picture D1Wdd: and 2 + 16 grey steps (sf); ; PS operator 3 colorimage



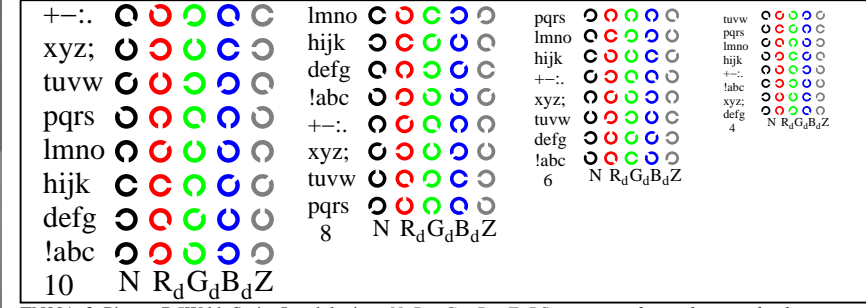
TN800-5, Picture D2Wdd: radial gratings W-R_d; W-G_d; W-B_d; W-N; PS operator rgb->rgb_{dd} setrgbcolor



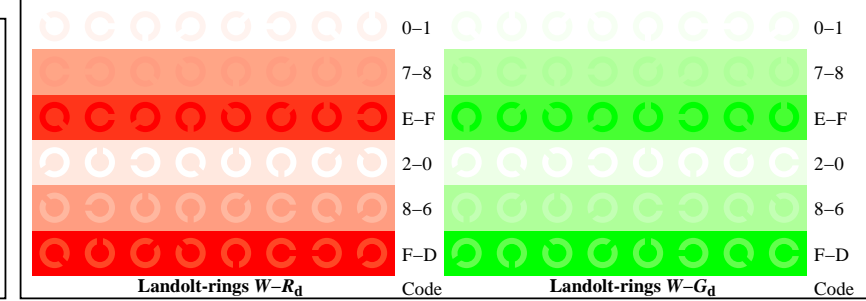
TN800-7, Picture D3Wdd: 14 CIE-test colours and 2 + 16 grey steps (sf); rgb/cmy0->rgb_{dd} setrgbcolor



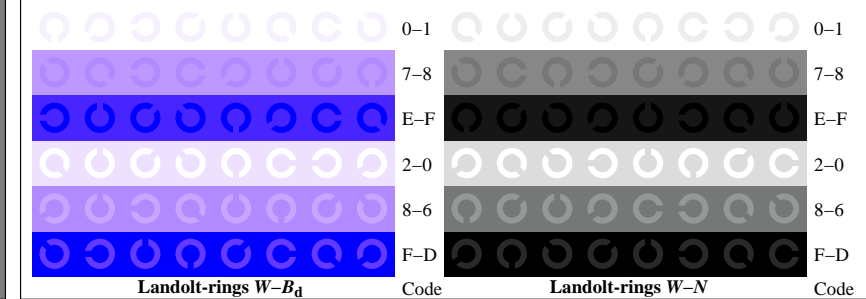
TN801-1, Picture D4Wdd: 16 equidistant steps W-R_d; W-G_d; W-B_d; W-N; rgb/cmy0->rgb_{dd} setrgbcolor



TN801-3, Picture D5Wdd: Script Landolt-rings N; R_d; G_d; B_d; Z; PS operator rgb->rgb_{dd} setrgbcolor



TN801-5, Picture D6Wdd: Landolt-rings W-R_d; W-G_d; PS operator rgb->rgb_{dd} setrgbcolor



TN801-7, Picture D7Wdd: Landolt-rings W-B_d; W-N; PS operator rgb->rgb_{dd} setrgbcolor