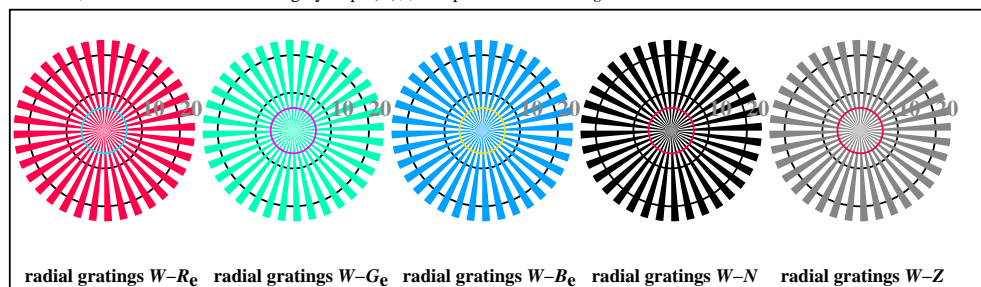




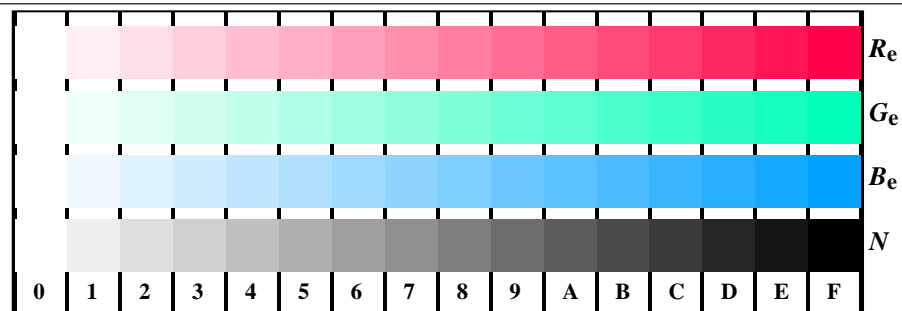
TN800-3, Picture D1We: and 2 + 16 grey steps (sf); PS operator 3 colorimage



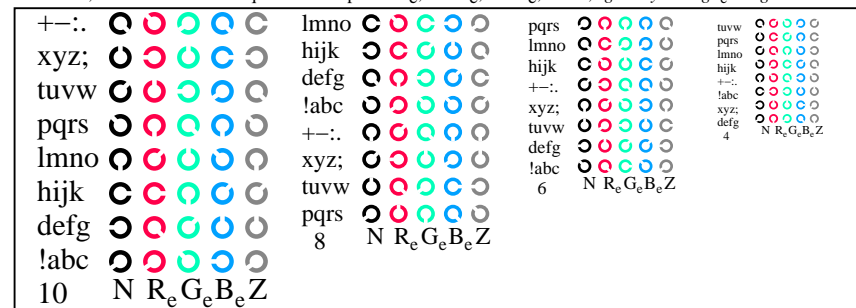
TN800-5, Picture D2We: radial gratings W-R_e; W-G_e; W-B_e; W-N; PS operator rgb->rgb_e.setrgbcolor



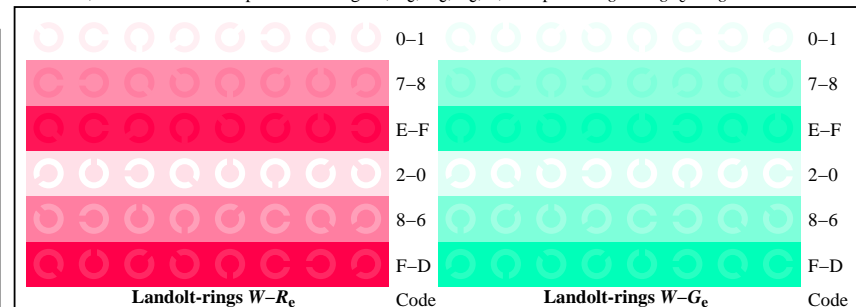
TN800-7, Picture D3We: 14 CIE-test colours and 2 + 16 grey steps (sf); rgb/cmy0->rgb_e.setrgbcolor



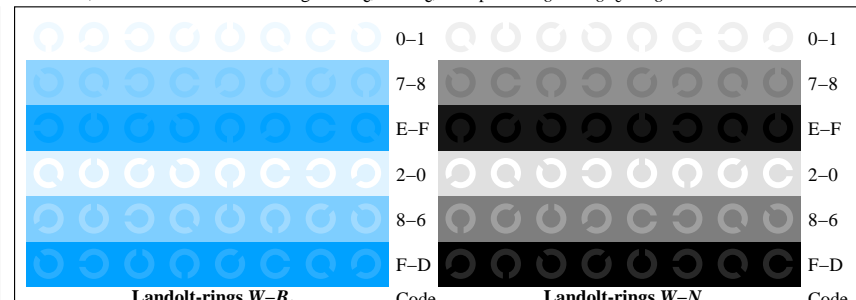
TN801-1, Picture D4We: 16 equidistant steps W-R_e; W-G_e; W-B_e; W-N; rgb/cmy0->rgb_e.setrgbcolor



TN801-3, Picture D5We: Script Landolt-rings N; R_e; G_e; B_e; Z; PS operator rgb->rgb_e.setrgbcolor



TN801-5, Picture D6We: Landolt-rings W-R_e; W-G_e; PS operator rgb->rgb_e.setrgbcolor



TN801-7, Picture D7We: Landolt-rings W-B_e; W-N; PS operator rgb->rgb_e.setrgbcolor