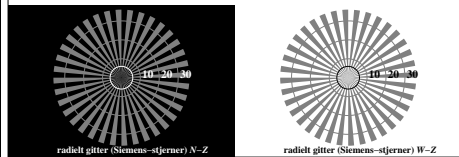
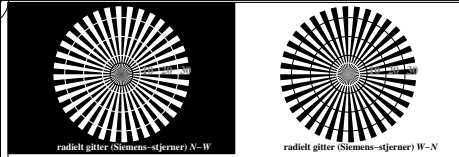


http://130.149.60.45/~farbmetrik/TN77/TN77L0N1.TXT /PS; start output
 N: ingen 3D-linearisering (OL) i fil (F) eller PS-startup (S), side 1/1

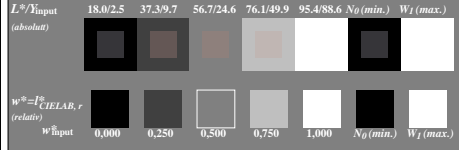
se liggende filer: http://130.149.60.45/~farbmetrik/TN77/TN77.HTM
 teknisk informasjon: http://www.ps.barn.de eller http://130.149.60.45/~farbmetrik

TUB registrering: 20150901-TN77/TN77L0N1.TXT .PS
 anvendelse for måling av offsetrykk output

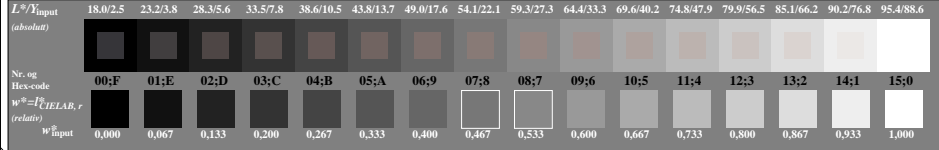
TUB-material: code=matata



TN70-3, Figur C1W--: Element A: Radielt gitter N-W, W-W, N-Z og W-Z; PS operator: rgb/cmy0

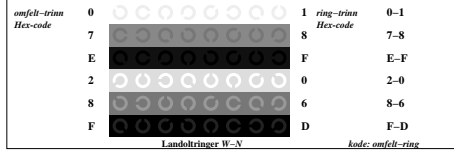


TN70-5, Figur C2W--: Element B: 5 visuelle ekvidistante L^* -gråtrinns + N_0 + W_I ; PS operator: rgb/cmy0

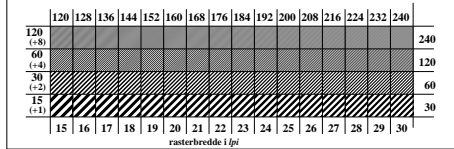


TN70-7, Figur C3W--: Element C: 16 visuelle ekvidistante L^* -gråtrinns; PS operator: rgb/cmy0

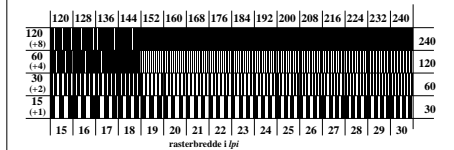
prøveplasje TN77; ME16(ISO 9241-306), 3(ISO/IEC 15775) input: rgb/cmyk -> rgb/cmyk
 akromatisk prøveplasje N output: ingen endring



TN71-1, Figur C4W--: Element D: Landoltringer W-N; PS operator: rgb/cmy0



TN71-3, Figur C5W--: Element E: Linjeraster med 45° (eller 135°); PS operator: rgb/cmy0



TN71-5, Figur C6W--: Element F: Linjeraster med 90° (eller 0°); PS operator: rgb/cmy0