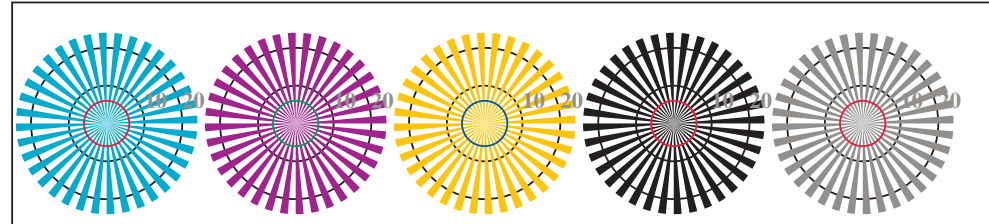


http://farbe.li.tu-berlin.de/TI99/TI99L0FP.PDF /PS; linearizzazione 3D
F: linearizzazione 3D TI99/TI99LI30FP.DAT nel file (F), pagine 2/2

vedi file simili: http://farbe.li.tu-berlin.de/TI99/TI99.HTM
Informazioni tecniche: http://www.ps.bam.de o http://130.149.60.45/~farbmetrik

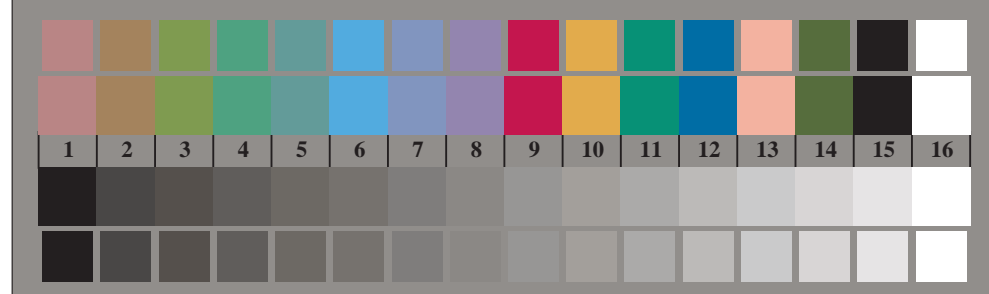


TI990-3, Fig. B1Wde: motivo floreale, 14 prova colori CIE i 2 + 16 grigio passi (sf); ; PS operator 4 colorimage



reticoli radiali W-Ce reticoli radiali W-Me reticoli radiali W-Ye reticoli radiali W-N reticoli radiali W-Z

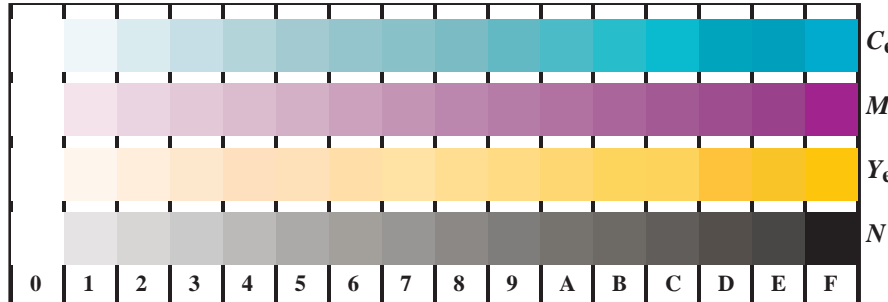
TI990-5, Fig. B2Wde: reticoli radiali W-Ce; W-Me; W-Ye; W-N; PS operator rgb->rgbde setrgbcolor



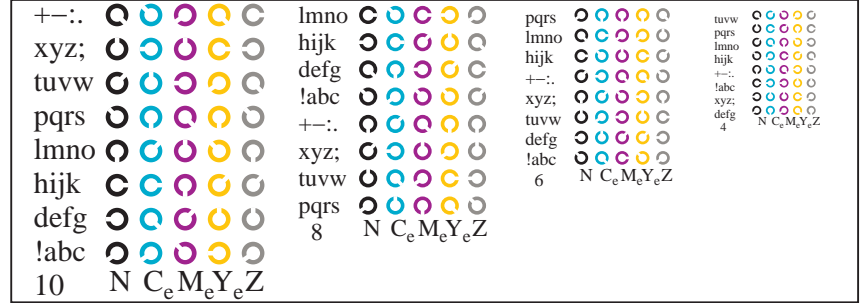
TI990-7, Fig. B3Wde: 14 prova colori CIE i 2 + 16 grigio passi (sf); rgb/cmy0->rgbde setrgbcolor



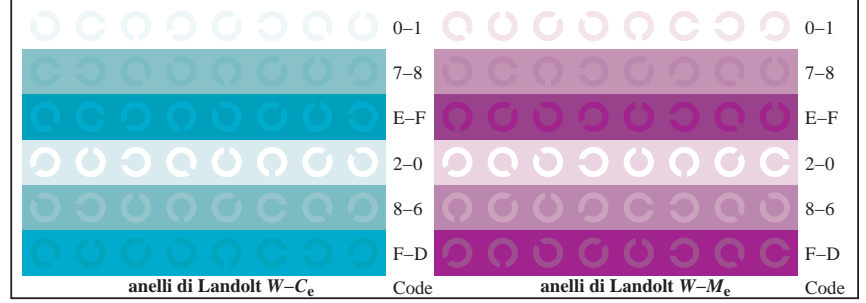
Grafico TUB-TI99; 2(ISO/IEC 15775 & ISO/IEC TR 24705)
Tavola dei colori cromatici CMY, 3D=1, de=1, cmyk*



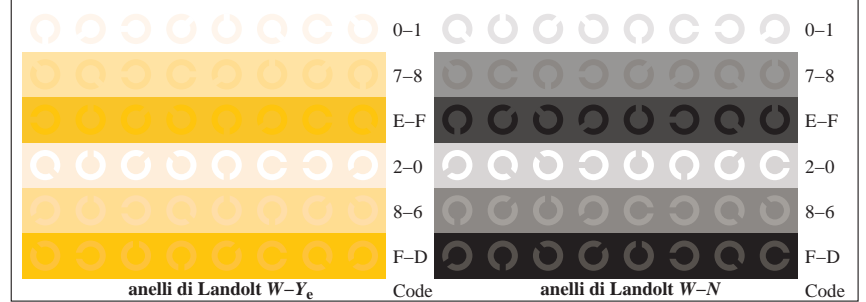
TI991-1, Fig. B4Wde: 16 equidistante passi W-Ce; W-Me; W-Ye; W-N; rgb/cmy0->rgbde setrgbcolor



TI991-3, Fig. B5Wde: codice i Landolt anelli N; Ce; Me; Ye; Z; PS operator rgb->rgbde setrgbcolor



TI991-5, Fig. B6Wde: anelli di Landolt W-Ce; W-Me; PS operator rgb->rgbde setrgbcolor



TI991-7, Fig. B7Wde: anelli di Landolt W-Ye; W-N; PS operator rgb->rgbde setrgbcolor

Input: rgb/cmyk -> rgbde
Output: linearizzazione 3D a cmyk*

iscrizione TUB: 20160501-TI99/TI99L0FP.PDF /PS
Applicazione per la misura dell'output della stampante laser, separazionecmy6* (CMYK6)

TUB materiale: code=rh4ta