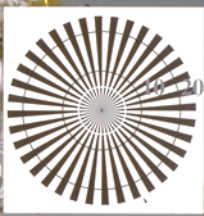
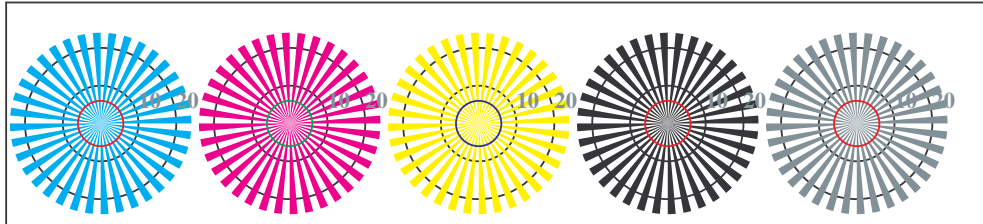


http://farbe.li.tu-berlin.de/TI96/TI96L0FP.PDF /PS; linearizzazione 3D
F: linearizzazione 3D TI96/TI96LI30FP.DAT nel file (F), pagine 2/2

vedi file simili: <http://farbe.li.tu-berlin.de/TI96/TI96.HTM>
Informazioni tecniche: <http://www.ps.bam.de> o <http://130.149.60.45/~farbmetrik>



TI960-3, Fig. B1Wdd: motivo floreale, 14 prova colori CIE i 2 + 16 grigio passi (sf); ; PS operator 4 colorimage



reticoli radiali W-C_d reticoli radiali W-M_d reticoli radiali W-Y_d reticoli radiali W-N reticoli radiali W-Z

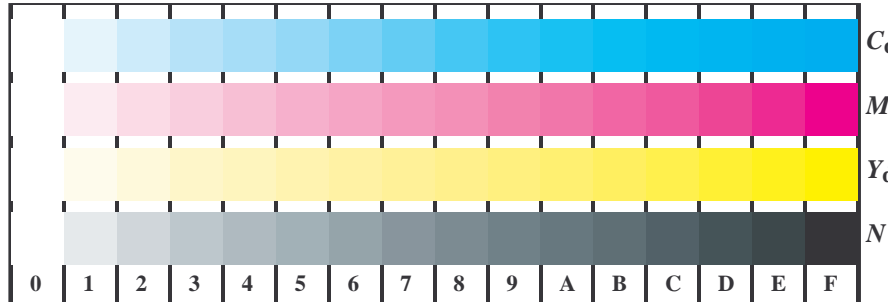
TI960-5, Fig. B2Wdd: reticoli radiali W-C_d; W-M_d; W-Y_d; W-N; PS operator rgb->rgb_{dd} setrgbcolor



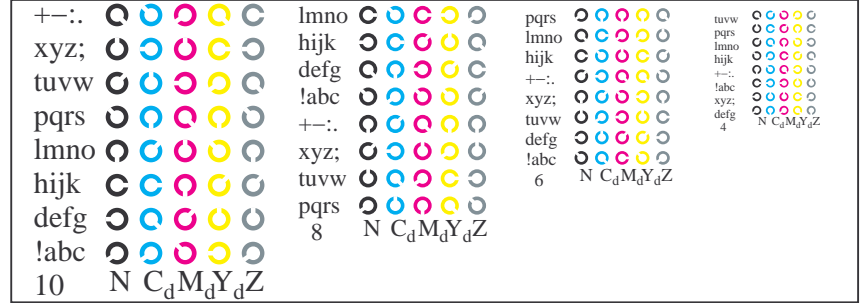
TI960-7, Fig. B3Wdd: 14 prova colori CIE i 2 + 16 grigio passi (sf); rgb/cmy0->rgb_{dd} setrgbcolor



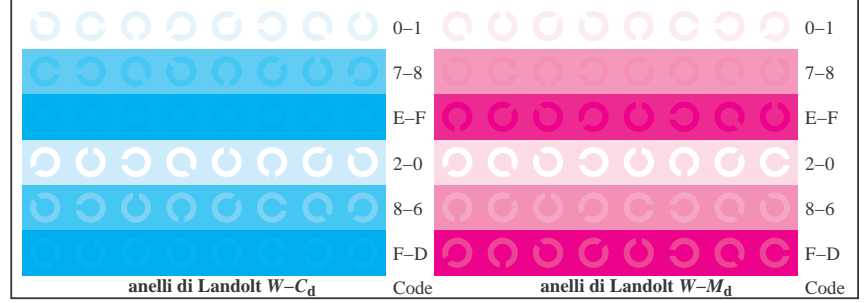
Grafico TUB-TI96; 2(ISO/IEC 15775 & ISO/IEC TR 24705)
Tavola dei colori cromatici CMY, 3D=1, de=0, cmy0*



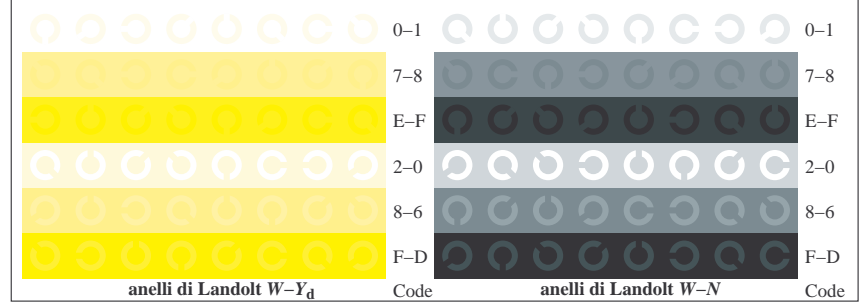
TI961-1, Fig. B4Wdd: 16 equidistante passi W-C_d; W-M_d; W-Y_d; W-N; rgb/cmy0->rgb_{dd} setrgbcolor



TI961-3, Fig. B5Wdd: codice i Landolt anelli N; C_d; M_d; Y_d; Z; PS operator rgb->rgb_{dd} setrgbcolor



TI961-5, Fig. B6Wdd: anelli di Landolt W-C_d; W-M_d; PS operator rgb->rgb_{dd} setrgbcolor



TI961-7, Fig. B7Wdd: anelli di Landolt W-Y_d; W-N; PS operator rgb->rgb_{dd} setrgbcolor

Input: rgb/cmyk -> rgb_{dd}
Output: linearizzazione 3D a cmy0*

iscrizione TUB: 20160501-TI96/TI96L0FP.PDF /PS
Applicazione per la misura dell'output nella stampa di offset, separazionecmy0* (CMY0)
TUB materiale: code=rhata