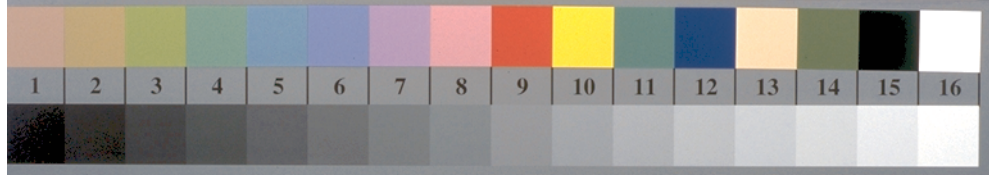
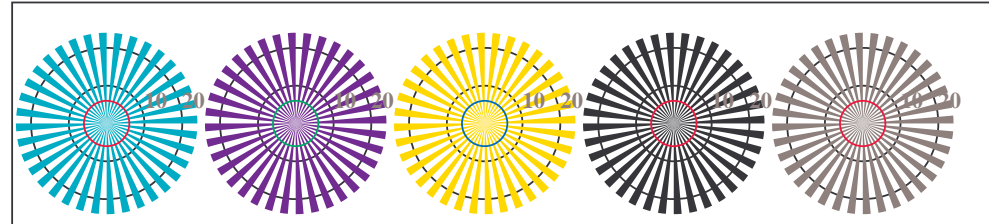


http://farbe.li.tu-berlin.de/TI96/TI96L0NP.PDF / .PS; Output di trasferimento
N: nessuna linearizzazione 3D (OL) nel file (F) o PS-startup (S), pagine 2/2

vedi file simili: http://farbe.li.tu-berlin.de/TI96/TI96.HTM
Informazioni tecniche: http://www.ps.bam.de o http://130.149.60.45/~farbmetrik



TI960-3, Fig. B1We: motivo floreale, 14 prova colori CIE i 2 + 16 grigio passi (sf); ; PS operator 4 colorimage



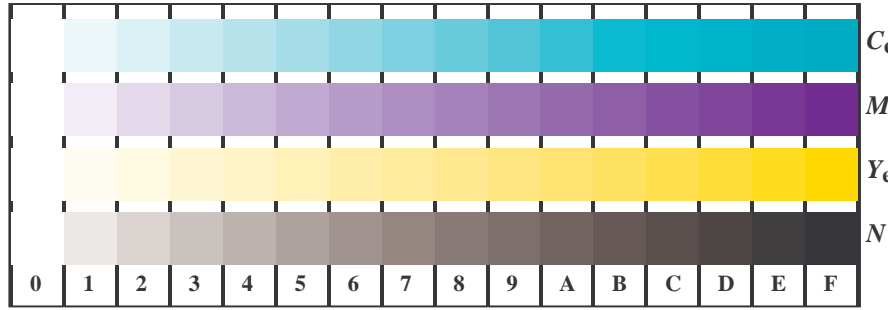
TI960-5, Fig. B2We: reticoli radiali W-Ce; W-Me; W-Ye; W-N; PS operator rgb->rgb_e setrgbcolor



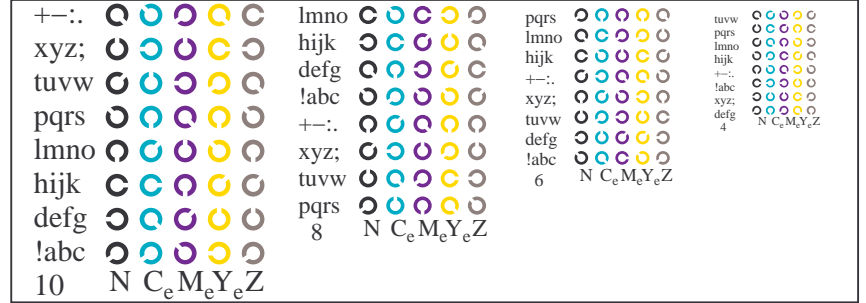
TI960-7, Fig. B3We: 14 prova colori CIE i 2 + 16 grigio passi (sf); rgb/cmy0->rgb_e setrgbcolor



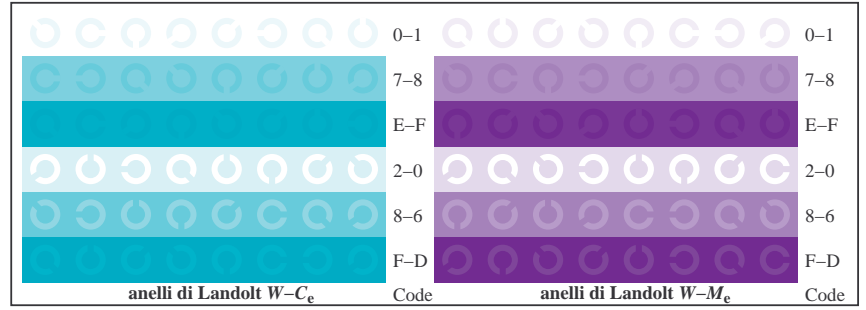
Grafico TUB-TI96; 2(ISO/IEC 15775 & ISO/IEC TR 24705)
Tavola dei colori cromatici CMY, 3D=0, de=1, cmy0



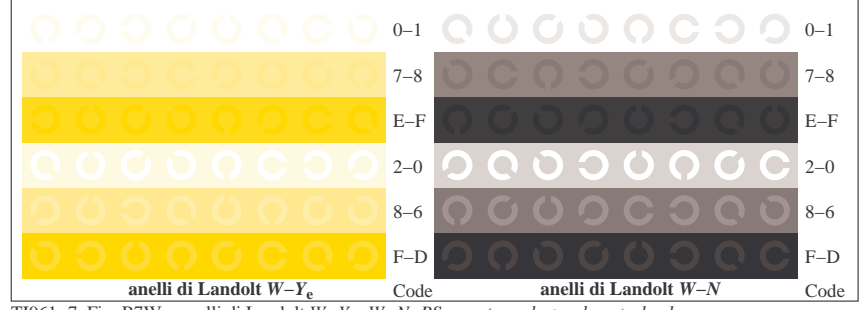
TI961-1, Fig. B4We: 16 equidistante passi W-Ce; W-Me; W-Ye; W-N; rgb/cmy0->rgb_e setrgbcolor



TI961-3, Fig. B5We: codice i Landolt anelli N; Ce; Me; Ye; Z; PS operator rgb->rgb_e setrgbcolor



TI961-5, Fig. B6We: anelli di Landolt W-Ce; W-Me; PS operator rgb->rgb_e setrgbcolor



TI961-7, Fig. B7We: anelli di Landolt W-Ye; W-N; PS operator rgb->rgb_e setrgbcolor

Input: rgb/cmyk -> rgb_e
Output: trasferire a cmy0_e

iscrizione TUB: 20160501-TI96/TI96L0NP.PDF / .PS
Applicazione per la misura dell'output nella stampa di offset, separazionecmy0 (CMY0)
TUB materiale: code=rh4ta