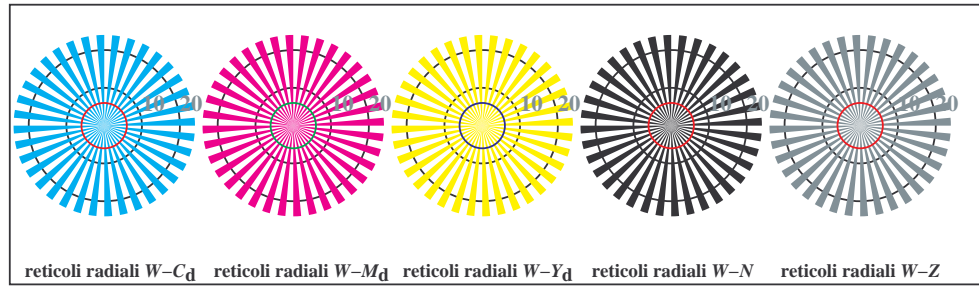
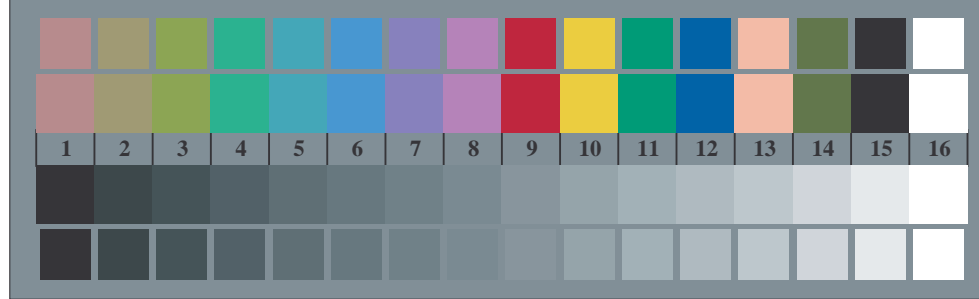




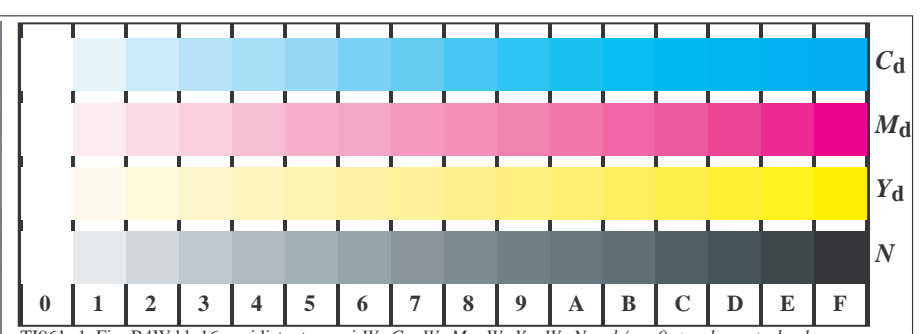
TI960-3, Fig. B1Wdd: motivo floreale, 14 prova colori CIE i 2 + 16 grigio passi (sf); ; PS operator 4 colorimage



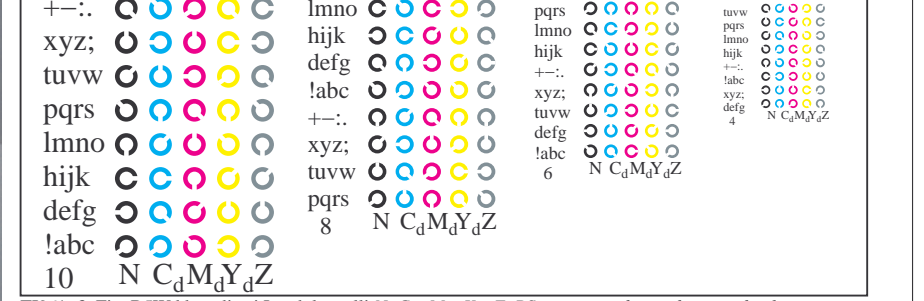
TI960-5, Fig. B2Wdd: reticoli radiali $W-C_d$; $W-M_d$; $W-Y_d$; $W-N$; PS operator $rgb \rightarrow rgb_{dd}$ setrgbcolor



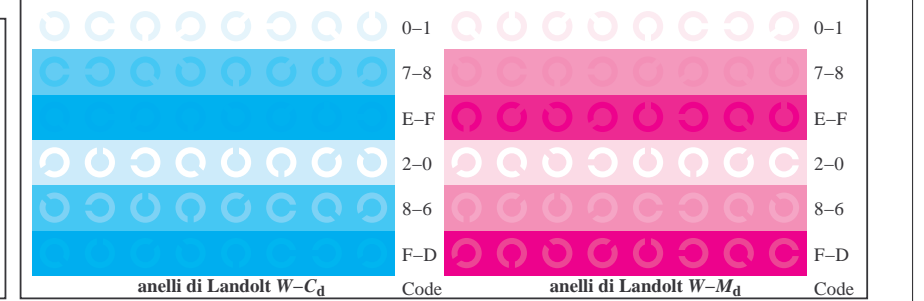
TI960-7, Fig. B3Wdd: 14 prova colori CIE i 2 + 16 grigio passi (sf); $rgb/cmy0 \rightarrow rgb_{dd}$ setrgbcolor



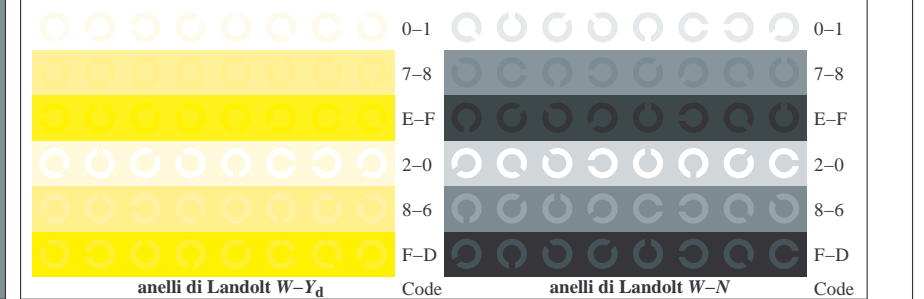
TI961-1, Fig. B4Wdd: 16 equidistante passi $W-C_d$; $W-M_d$; $W-Y_d$; $W-N$; $rgb/cmy0 \rightarrow rgb_{dd}$ setrgbcolor



TI961-3, Fig. B5Wdd: codice i Landolt anelli N ; C_d ; M_d ; Y_d ; Z ; PS operator $rgb \rightarrow rgb_{dd}$ setrgbcolor



TI961-5, Fig. B6Wdd: anelli di Landolt $W-C_d$; $W-M_d$; PS operator $rgb \rightarrow rgb_{dd}$ setrgbcolor



TI961-7, Fig. B7Wdd: anelli di Landolt $W-Y_d$; $W-N$; PS operator $rgb \rightarrow rgb_{dd}$ setrgbcolor