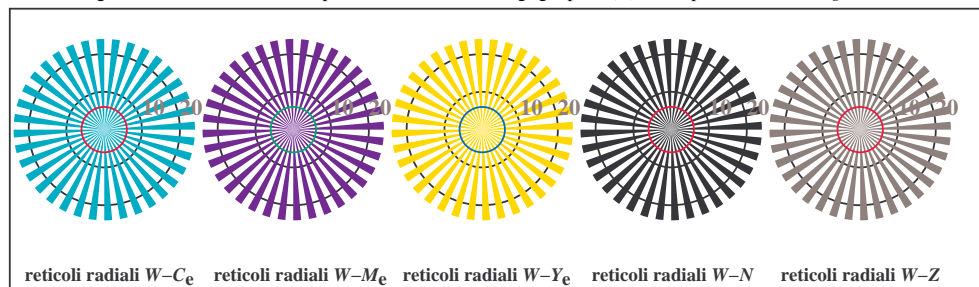
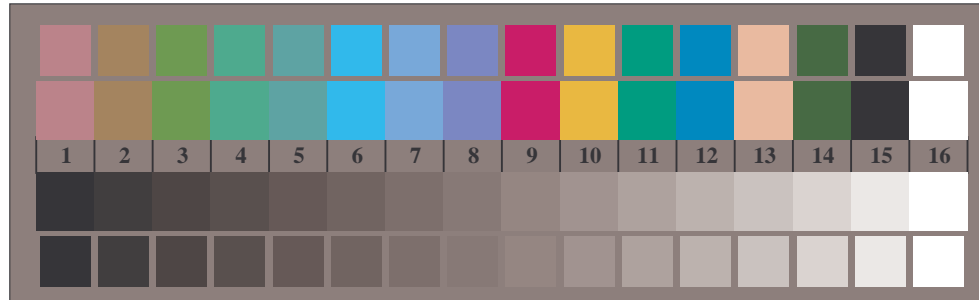




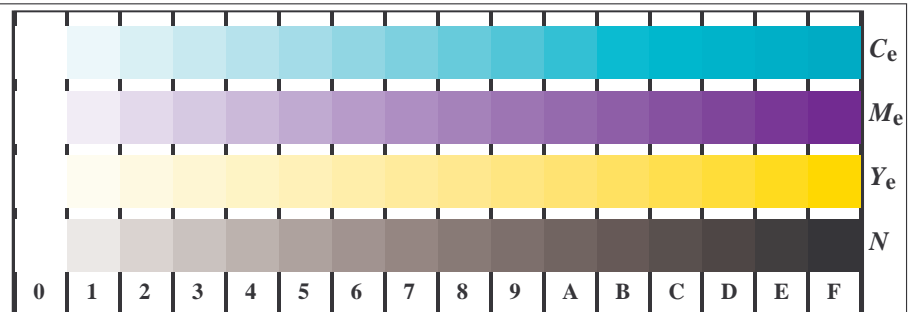
TI960-3, Fig. B1We: motivo floreale, 14 prova colori CIE i 2 + 16 grigio passi (sf); PS operator 4 colorimage



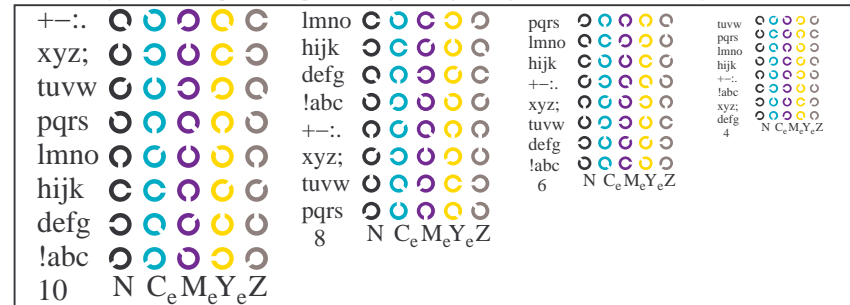
TI960-5, Fig. B2We: reticoli radiali $W-C_e$; $W-M_e$; $W-Y_e$; $W-N$; PS operator $rgb \rightarrow rgb_e$ setrgbcolor



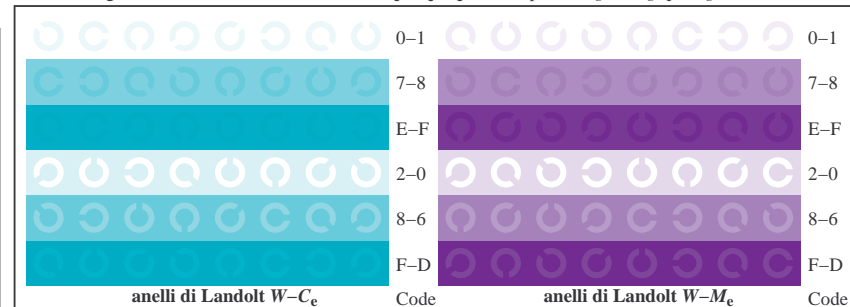
TI960-7, Fig. B3We: 14 prova colori CIE i 2 + 16 grigio passi (sf); $rgb/cmy0 \rightarrow rgb_e$ setrgbcolor



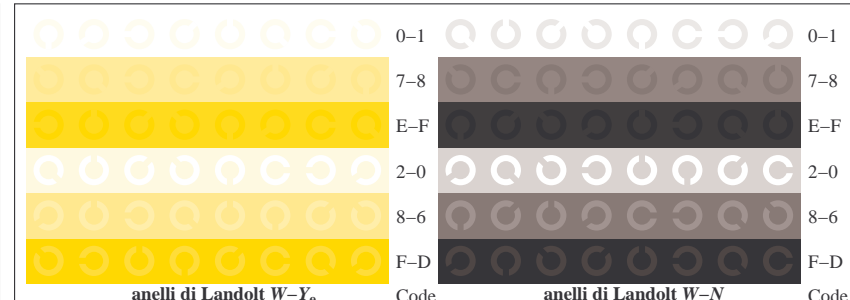
TI961-1, Fig. B4We: 16 equidistanti passi $W-C_e$; $W-M_e$; $W-Y_e$; $W-N$; $rgb/cmy0 \rightarrow rgb_e$ setrgbcolor



TI961-3, Fig. B5We: codice i Landolt anelli N ; C_e ; M_e ; Y_e ; Z ; PS operator $rgb \rightarrow rgb_e$ setrgbcolor



TI961-5, Fig. B6We: anelli di Landolt $W-C_e$; $W-M_e$; PS operator $rgb \rightarrow rgb_e$ setrgbcolor



TI961-7, Fig. B7We: anelli di Landolt $W-Y_e$; $W-N$; PS operator $rgb \rightarrow rgb_e$ setrgbcolor