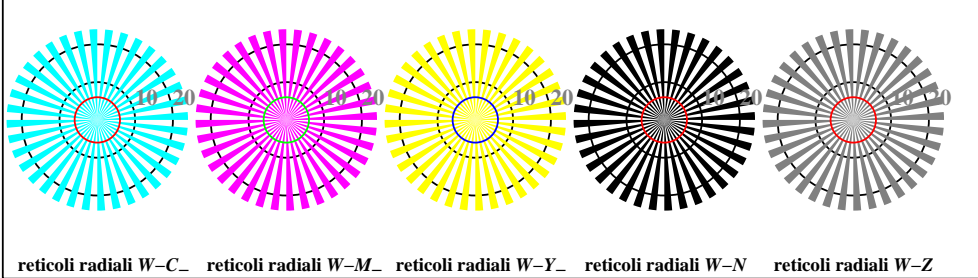


vedi file simili: http://farbe.li.tu-berlin.de/TI94/TI94.HTM
informazioni tecniche: http://www.ps.bam.de o http://130.149.60.45/~farbmetrik

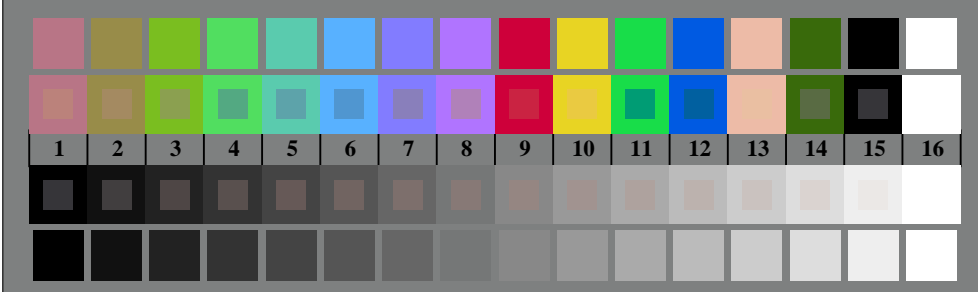
iscrizione TUB: 20160501-TI94/TI94LONP.PDF /.PS
Applicazione per la misura dell'output nella stampa di offset
TUB materiale: code=rh4ta



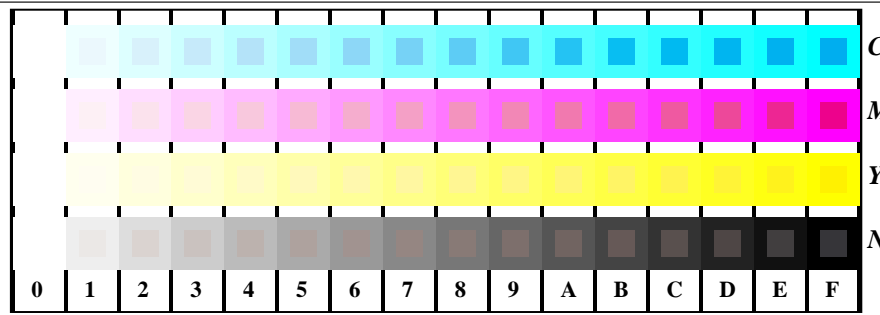
TI940-3, Fig. B1W-: motivo floreale, 14 prova colori CIE i 2 + 16 grigio passi (sf); ; PS operator 4 colorimage



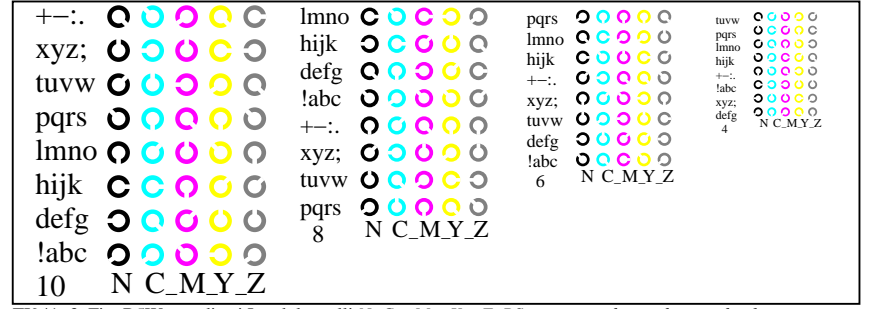
TI940-5, Fig. B2W-: reticoli radiali W-C-; W-M-; W-Y-; W-N; PS operator rgb->rgb_setrgbcolor



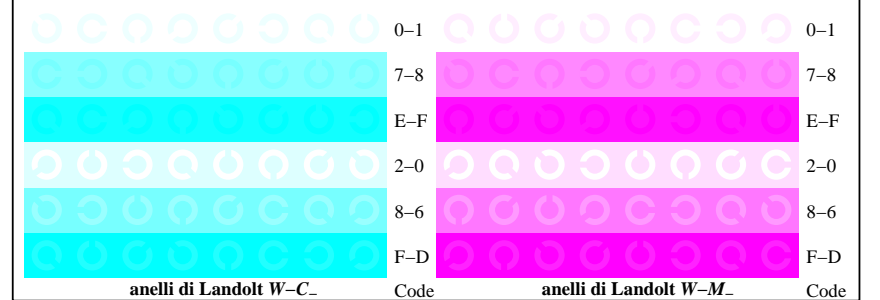
TI940-7, Fig. B3W-: 14 prova colori CIE i 2 + 16 grigio passi (sf); rgb/cmy0 set(rgb/cmyk)color



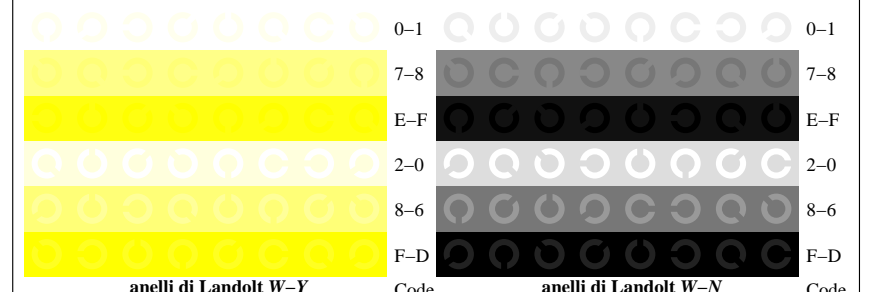
TI941-1, Fig. B4W-: 16 equidistante passi W-C-; W-M-; W-Y-; W-N; rgb/cmy0 set(rgb/cmyk)color



TI941-3, Fig. B5W-: codice i Landolt anelli N; C-; M-; Y-; Z; PS operator rgb->rgb_setrgbcolor



TI941-5, Fig. B6W-: anelli di Landolt W-C-; W-M-; PS operator rgb_setrgbcolor



TI941-7, Fig. B7W-: anelli di Landolt W-Y-; W-N; PS operator rgb_setrgbcolor