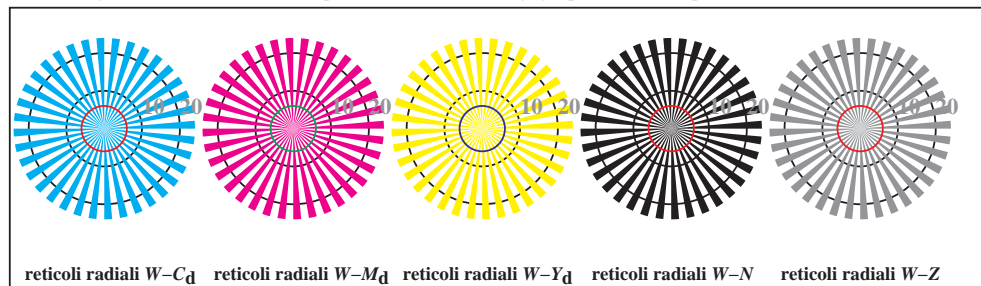
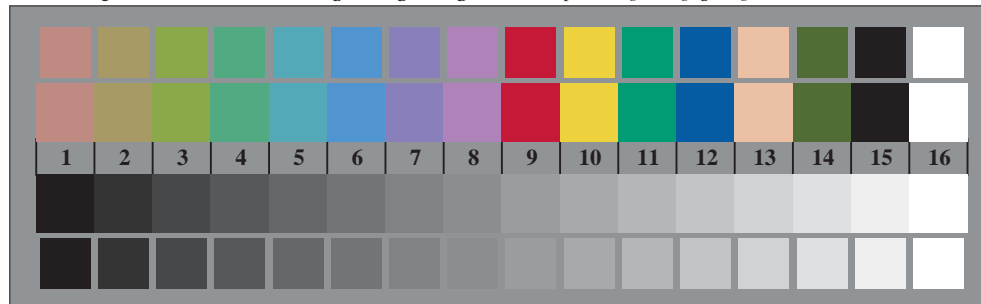




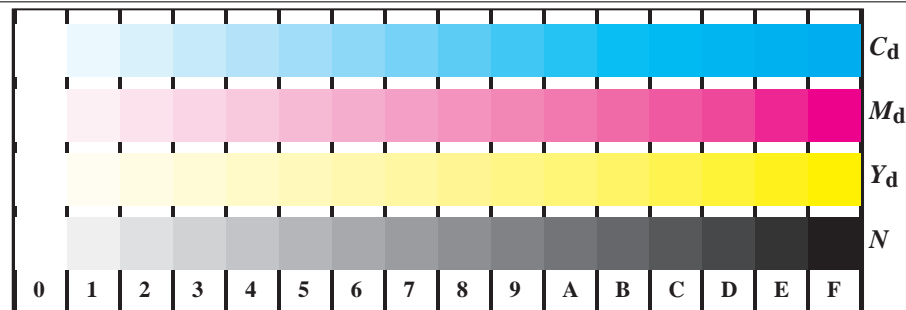
TI940-3, Fig. B1Wd: motivo floreale, 14 prova colori CIE i 2 + 16 grigio passi (sf); ; PS operator 4 colorimage



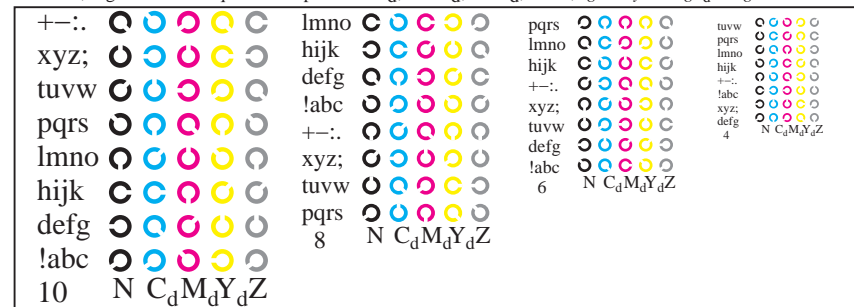
TI940-5, Fig. B2Wd: reticoli radiali $W-C_d$; $W-M_d$; $W-Y_d$; $W-N$; PS operator $rgb \rightarrow rgb_d$ setrgbcolor



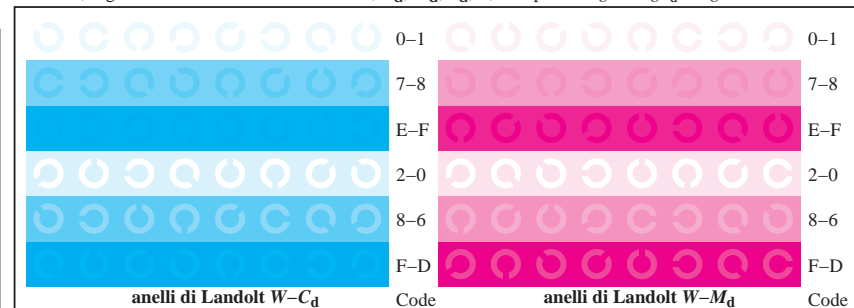
TI940-7, Fig. B3Wd: 14 prova colori CIE i 2 + 16 grigio passi (sf); $rgb/cmy0 \rightarrow rgb_d$ setrgbcolor



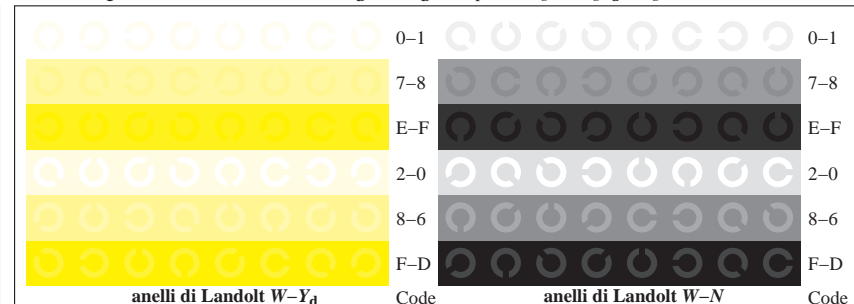
TI941-1, Fig. B4Wd: 16 equidistanti passi $W-C_d$; $W-M_d$; $W-Y_d$; $W-N$; $rgb/cmy0 \rightarrow rgb_d$ setrgbcolor



TI941-3, Fig. B5Wd: codice i Landolt anelli N; C_d ; M_d ; Y_d ; Z; PS operator $rgb \rightarrow rgb_d$ setrgbcolor



TI941-5, Fig. B6Wd: anelli di Landolt $W-C_d$; $W-M_d$; PS operator $rgb \rightarrow rgb_d$ setrgbcolor



TI941-7, Fig. B7Wd: anelli di Landolt $W-Y_d$; $W-N$; PS operator $rgb \rightarrow rgb_d$ setrgbcolor