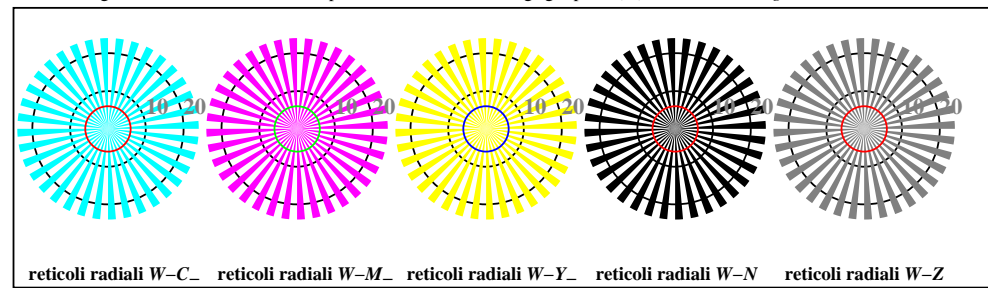
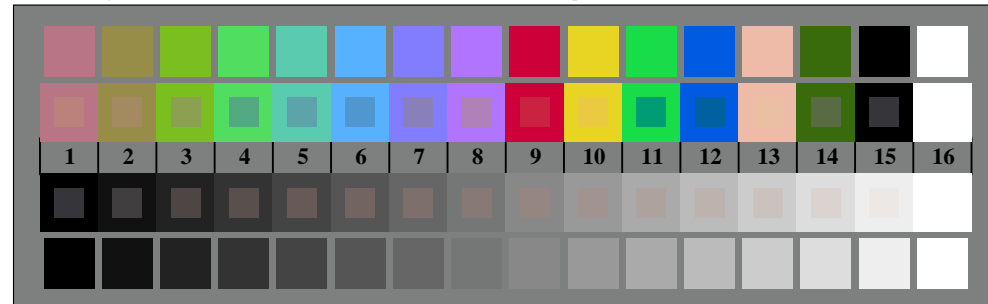




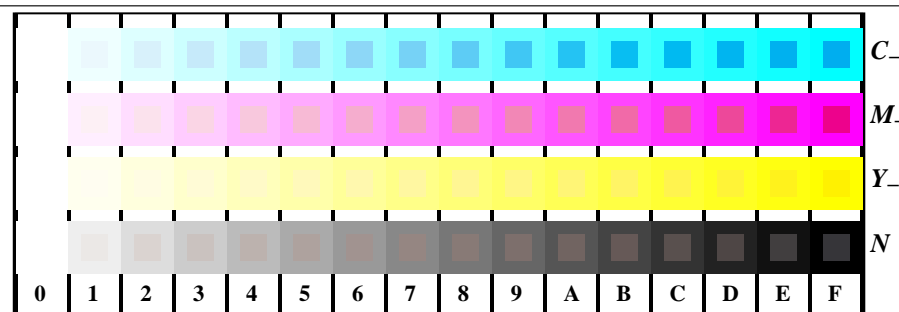
TI910-3, Fig. B1W-: motivo floreale, 14 prova colori CIE i 2 + 16 grigio passi (nf); PS 3 colorimage



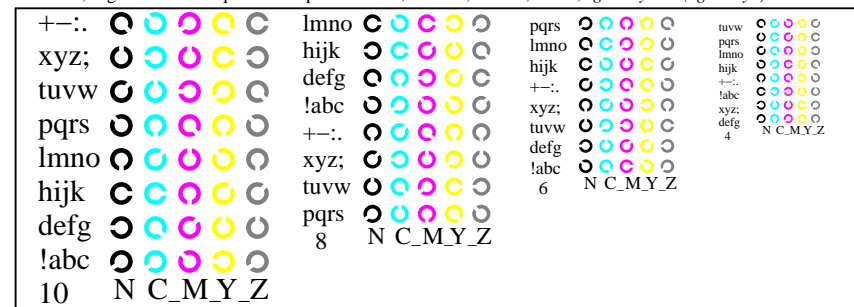
TI910-5, Fig. B2W-: reticoli radiali W-C_; W-M_; W-Y_; W-N; PS operator rgb->rgb_setrgbcolor



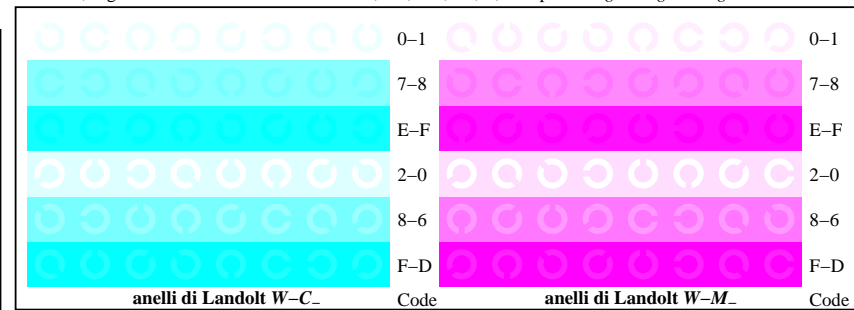
TI910-7, Fig. B3W-: 14 prova colori CIE i 2 + 16 grigio passi (sf); rgb/cmy0 set(rgb/cmyk)color



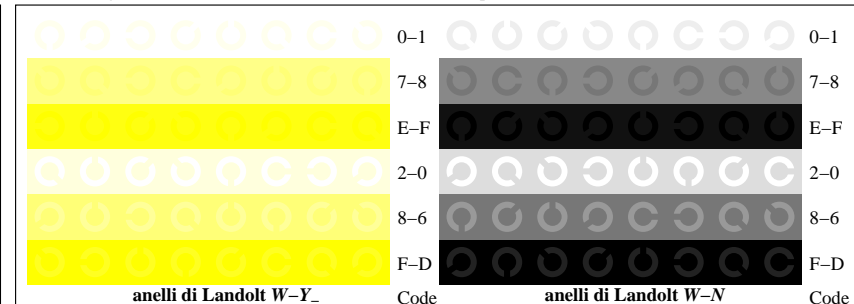
TI911-1, Fig. B4W-: 16 equidistante passi W-C_; W-M_; W-Y_; W-N; rgb/cmy0 set(rgb/cmyk)color



TI911-3, Fig. B5W-: codice i Landolt anelli N; C_; M_; Y_; Z; PS operator rgb->rgb_setrgbcolor



TI911-5, Fig. B6W-: anelli di Landolt W-C_; W-M_; PS operator rgb_setrgbcolor



TI911-7, Fig. B7W-: anelli di Landolt W-Y_; W-N; PS operator rgb_setrgbcolor