

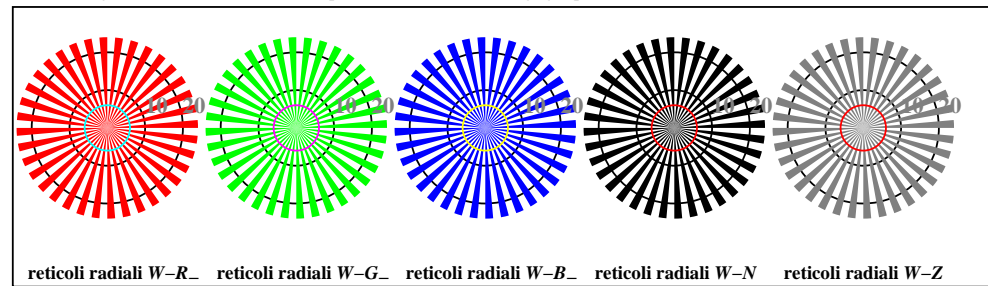
vedi file simili: http://farbe.li.tu-berlin.de/TI88/TI88.HTM  
informazioni tecniche: http://www.ps.bam.de o http://130.149.60.45/~farbmetrik

iscrizione TUB: 20160501-TI88/TI88LOFP.PDF /PS  
Applicazione per la misura dell'output output nella stampa di offset

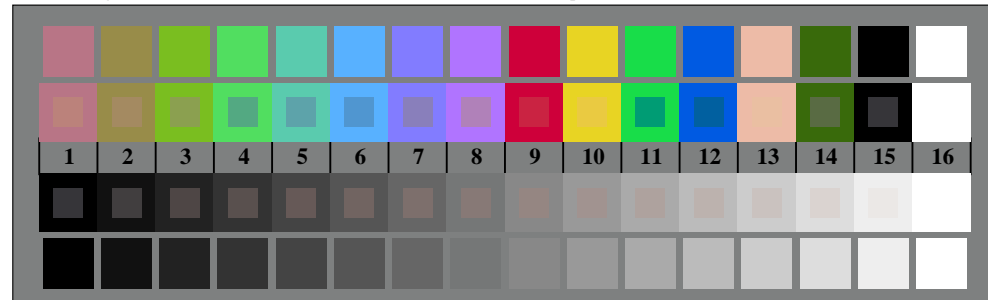
TUB materiale: code=rh4ta



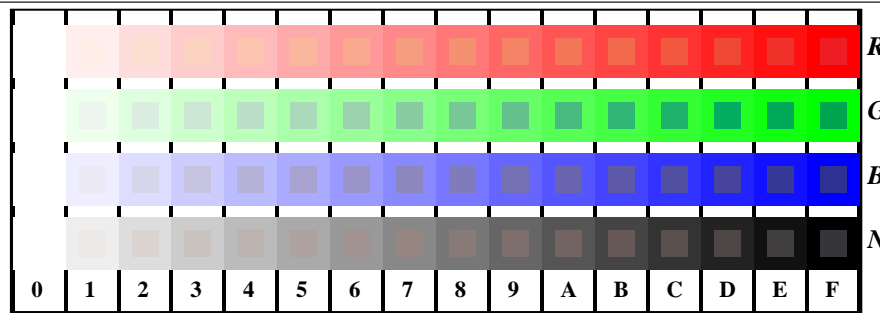
TI880-3, Fig. D1W-: motivo floreale, 14 prova colori CIE i 2 + 16 grigio passi (sf); ; PS 4 colorimage



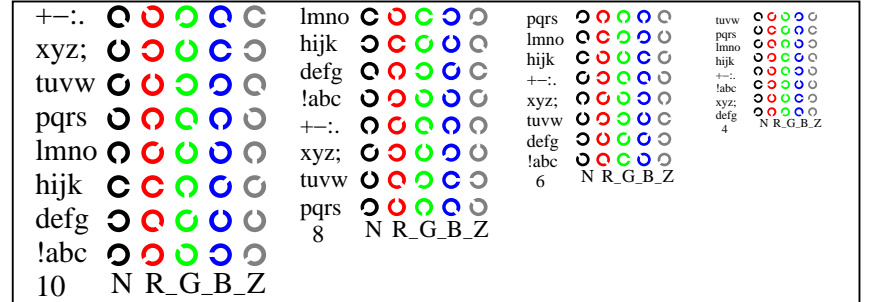
TI880-5, Fig. D2W-: reticoli radiali W-R-; W-G-; W-B-; W-N; PS operator rgb->rgb\_setrgbcolor



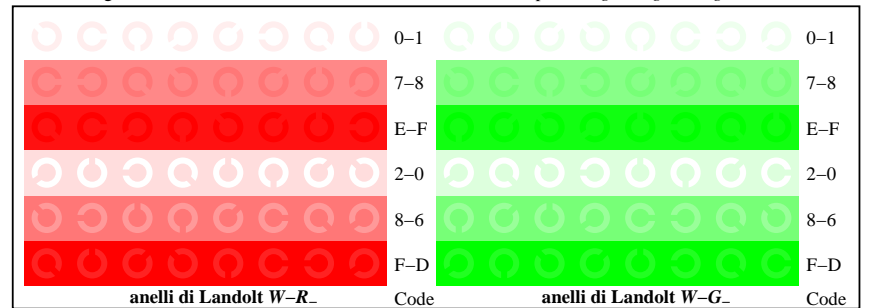
TI880-7, Fig. D3W-: 14 prova colori CIE i 2 + 16 grigio passi (sf); rgb/cmy0 set(rgb/cmyk)color



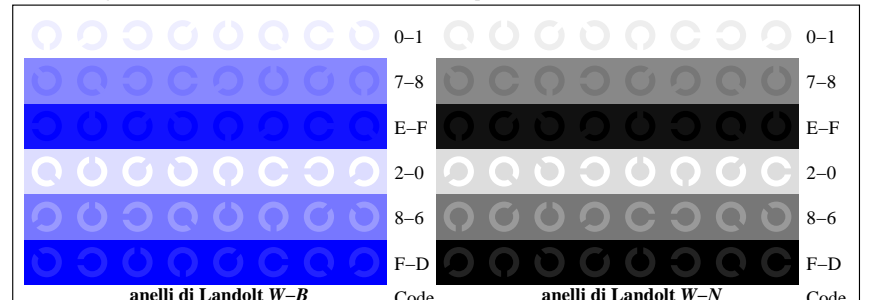
TI881-1, Fig. D4W-: 16 equidistante passi W-R-; W-G-; W-B-; W-N; rgb/cmy0 set(rgb/cmyk)color



TI881-3, Fig. D5W-: codice i Landolt anelli N; R-; G-; B-; Z; PS operator rgb->rgb\_setrgbcolor



TI881-5, Fig. D6W-: anelli di Landolt W-R-; W-G-; PS operator rgb\_setrgbcolor



TI881-7, Fig. D7W-: anelli di Landolt W-B-; W-N; PS operator rgb\_setrgbcolor

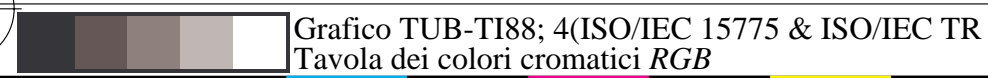


Grafico TUB-TI88; 4(ISO/IEC 15775 & ISO/IEC TR 24705)  
Tavola dei colori cromatici RGB

Input: rgb/cmyk -> w/rgb/cmyk-  
Output: nessun cambiamento

