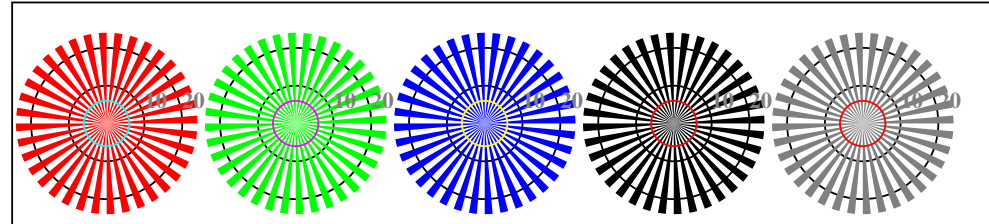


http://farbe.li.tu-berlin.de/TI86/TI86LONP.PDF /.PS; inizio dell'output
N: nessuna linearizzazione 3D (OL) nel file (F) o PS-startup (S), pagine 1/2

vedi file simili: http://farbe.li.tu-berlin.de/TI86/TI86.HTM
Informazioni tecniche: http://www.ps.bam.de o http://130.149.60.45/~farbmetrik

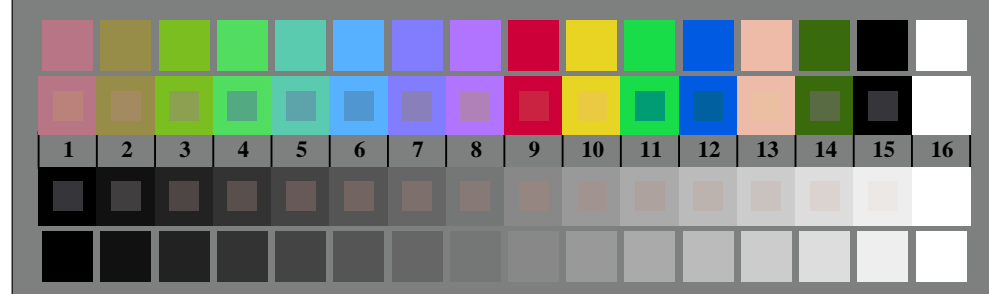


TI860-3, Fig. D1W-: motivo floreale, 14 prova colori CIE i 2 + 16 grigio passi (sf); ; PS 4 colorimage



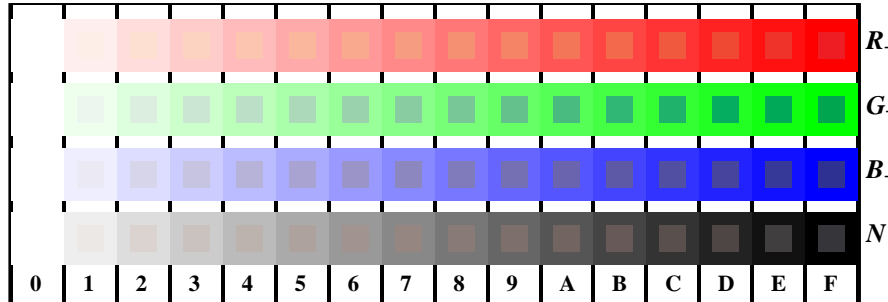
reticoli radiali W-R_ reticoli radiali W-G_ reticoli radiali W-B_ reticoli radiali W-N reticoli radiali W-Z

TI860-5, Fig. D2W-: reticoli radiali W-R_ ; W-G_ ; W-B_ ; W-N; PS operator rgb->rgb_setrgbcolor

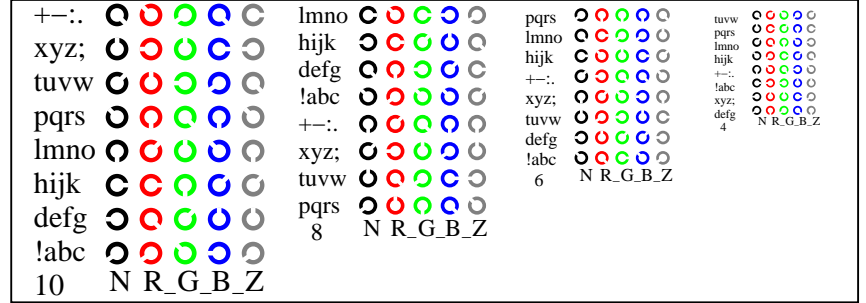


TI860-7, Fig. D3W-: 14 prova colori CIE i 2 + 16 grigio passi (sf); rgb/cmy0 set(rgb/cmyk)color

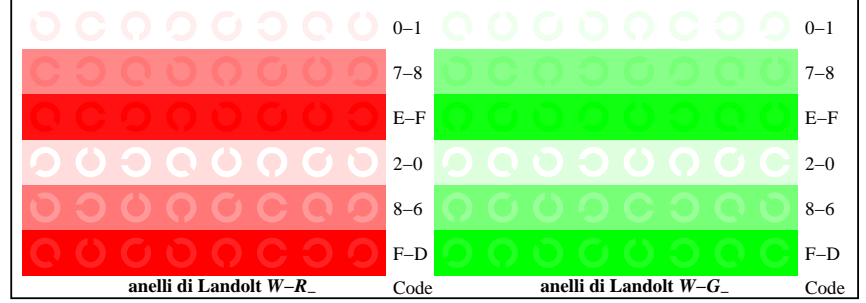
Grafico TUB-TI86; 4(ISO/IEC 15775 & ISO/IEC TR 24705)
Tavola dei colori cromatici RGB



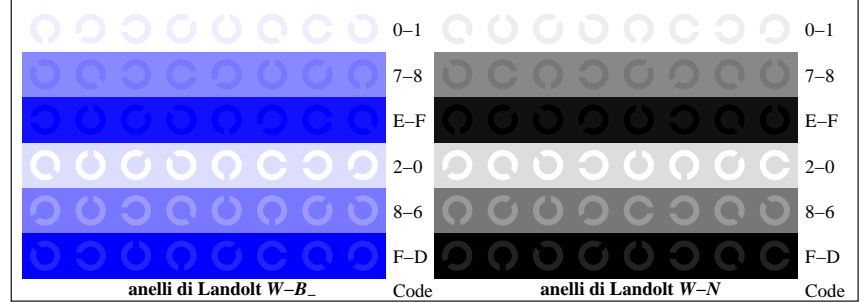
TI861-1, Fig. D4W-: 16 equidistante passi W-R_ ; W-G_ ; W-B_ ; W-N; rgb/cmy0 set(rgb/cmyk)color



TI861-3, Fig. D5W-: codice i Landolt anelli N; R_ ; G_ ; B_ ; Z; PS operator rgb->rgb_setrgbcolor



TI861-5, Fig. D6W-: anelli di Landolt W-R_ ; W-G_ ; PS operator rgb setrgbcolor



TI861-7, Fig. D7W-: anelli di Landolt W-B_ ; W-N; PS operator rgb setrgbcolor

Input: rgb/cmyk -> w/rgb/cmyk_
Output: nessun cambiamento

iscrizione TUB: 20160501-TI86/TI86LONP.PDF /.PS
Applicazione per la misura dell'output nella stampa di offset

TUB materiale: code=rhata