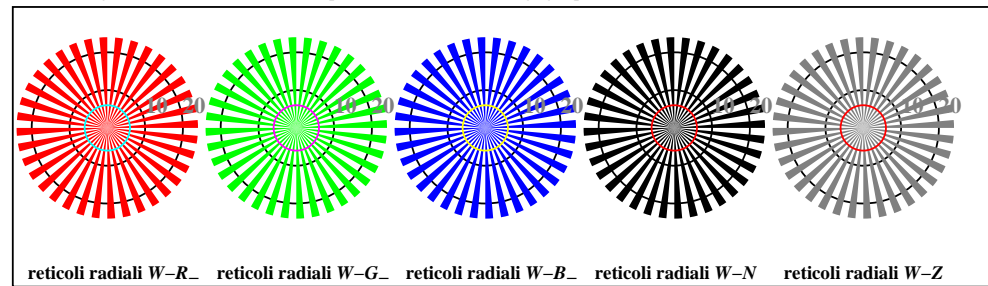


vedi file simili: http://farbe.li.tu-berlin.de/TI86/TI86.HTM
informazioni tecniche: http://www.ps.bam.de o http://130.149.60.45/~farbmetrik

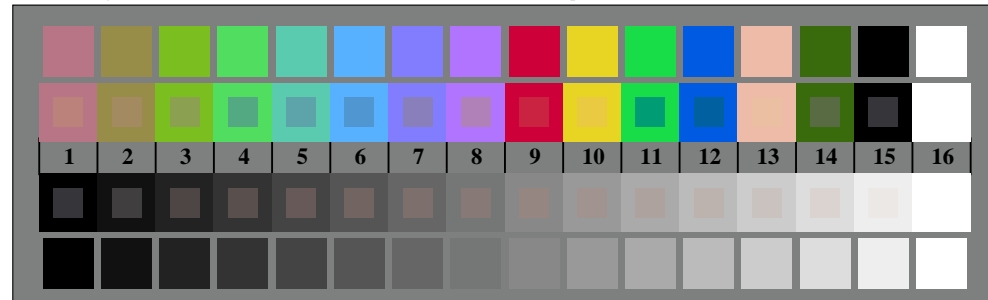
iscrizione TUB: 20160501-TI86/TI86L0NP.PDF /.PS
Applicazione per la misura dell'output output nella stampa di offset
TUB materiale: code=rh4ta



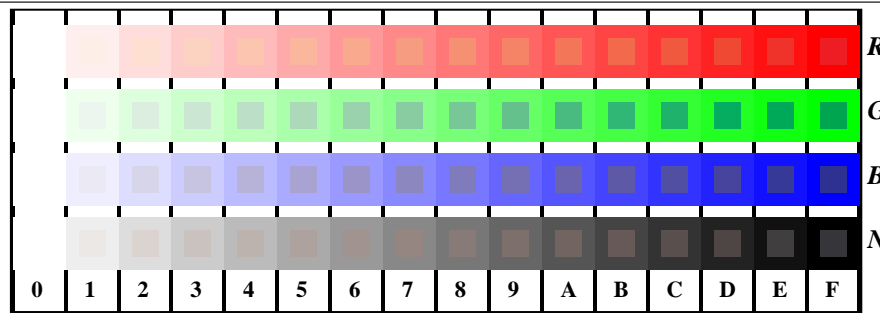
TI860-3, Fig. D1W-: motivo floreale, 14 prova colori CIE i 2 + 16 grigio passi (sf); ; PS 4 colorimage



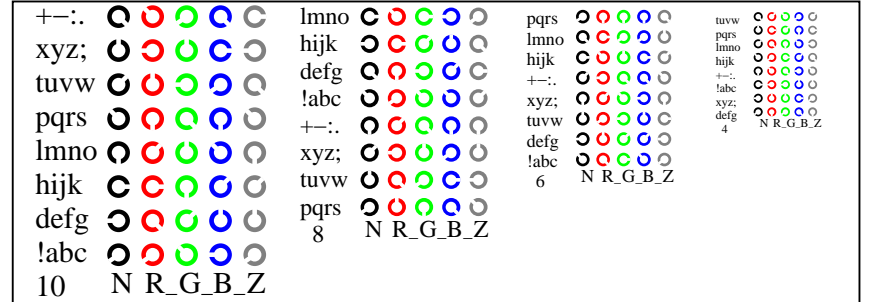
TI860-5, Fig. D2W-: reticoli radiali W-R-, W-G-, W-B-, W-N; PS operator rgb->rgb_setrgbcolor



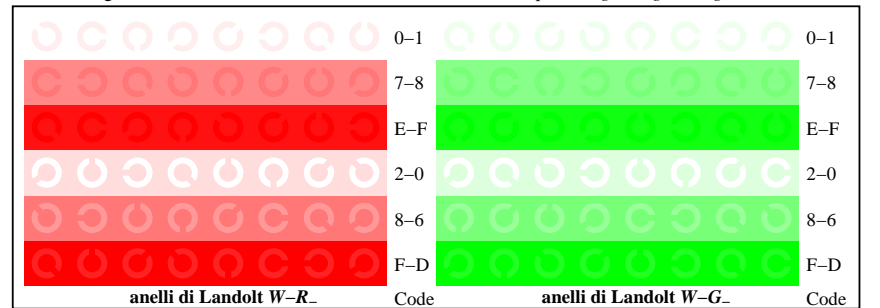
TI860-7, Fig. D3W-: 14 prova colori CIE i 2 + 16 grigio passi (sf); rgb/cmy0 set(rgb/cmyk)color



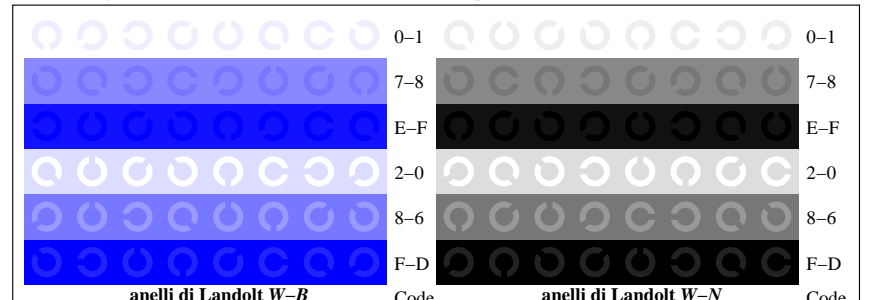
TI861-1, Fig. D4W-: 16 equidistante passi W-R-, W-G-, W-B-, W-N; rgb/cmy0 set(rgb/cmyk)color



TI861-3, Fig. D5W-: codice i Landolt anelli N; R-, G-, B-, Z; PS operator rgb->rgb_setrgbcolor



TI861-5, Fig. D6W-: anelli di Landolt W-R-, W-G-, PS operator rgb setrgbcolor



TI861-7, Fig. D7W-: anelli di Landolt W-B-, W-N; PS operator rgb setrgbcolor

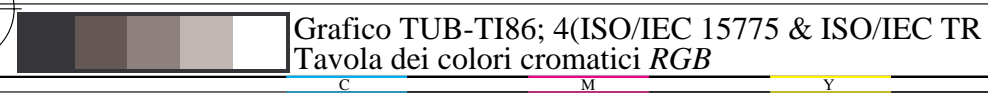


Grafico TUB-TI86; 4(ISO/IEC 15775 & ISO/IEC TR 24705)
Tavola dei colori cromatici RGB

Input: rgb/cmyk -> w/rgb/cmyk-
Output: nessun cambiamento

