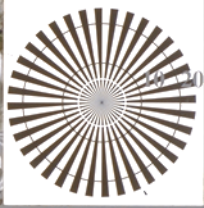
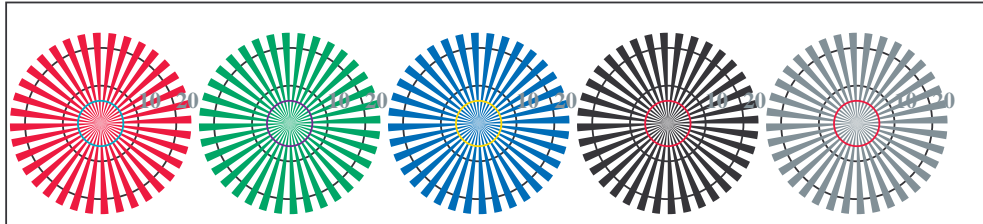


http://farbe.li.tu-berlin.de/TI86/TI86L0FP.PDF /PS; linearizzazione 3D
F: linearizzazione 3D TI86/TI86LI30FP.DAT nel file (F), pagine 2/2

vedi file simili: http://farbe.li.tu-berlin.de/TI86/TI86.HTM
Informazioni tecniche: http://www.ps.bam.de o http://130.149.60.45/~farbmetrik

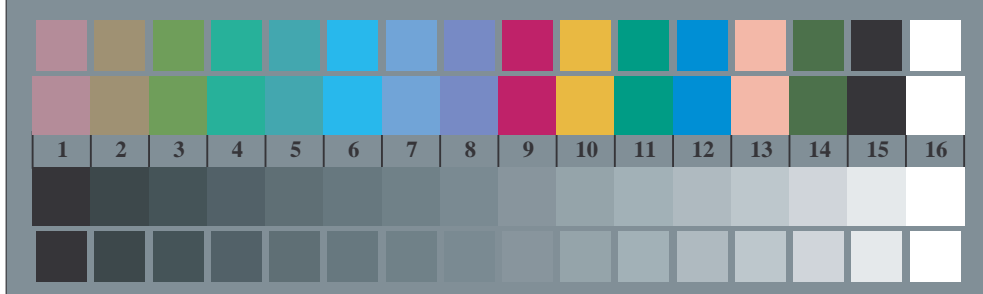


TI860-3, Fig. D1Wde: motivo floreale, 14 prova colori CIE i 2 + 16 grigio passi (sf); ; PS 4 colorimage

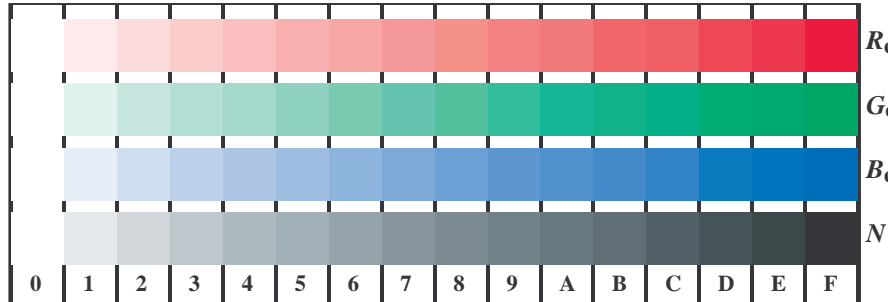


reticoli radiali W-Re reticoli radiali W-Ge reticoli radiali W-Be reticoli radiali W-N reticoli radiali W-Z

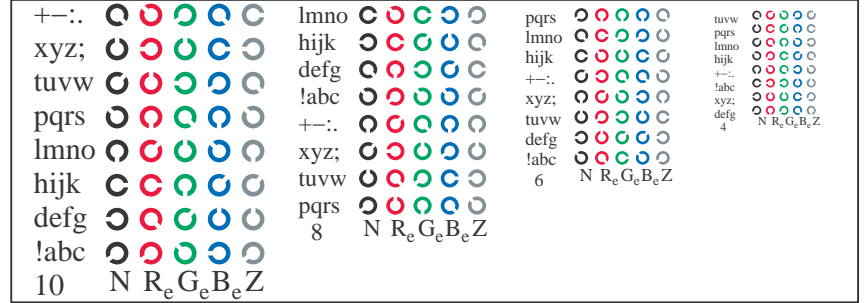
TI860-5, Fig. D2Wde: reticoli radiali W-Re; W-Ge; W-Be; W-N; PS operator rgb->rgbde setrgbcolor



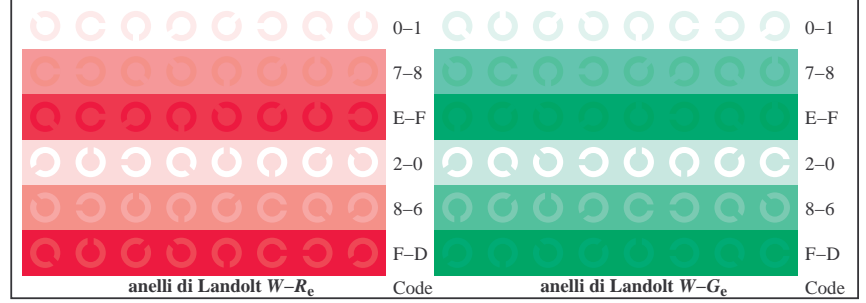
TI860-7, Fig. D3Wde: 14 prova colori CIE i 2 + 16 grigio passi (sf); rgb/cmy0->rgbde setrgbcolor



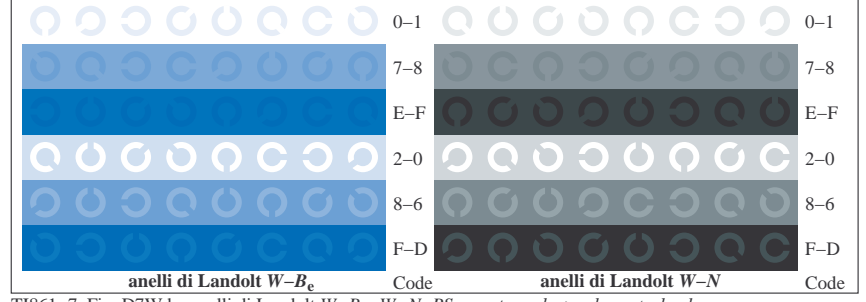
TI861-1, Fig. D4Wde: 16 equidistante passi W-Re; W-Ge; W-Be; W-N; rgb/cmy0->rgbde setrgbcolor



TI861-3, Fig. D5Wde: codice i Landolt anelli N; Re; Ge; Be; Z; PS operator rgb->rgbde setrgbcolor



TI861-5, Fig. D6Wde: anelli di Landolt W-Re; W-Ge; PS operator rgb->rgbde setrgbcolor



TI861-7, Fig. D7Wde: anelli di Landolt W-Be; W-N; PS operator rgb->rgbde setrgbcolor

Grafico TUB-TI86; 4(ISO/IEC 15775 & ISO/IEC TR 24705)
Tavola dei colori cromatici RGB, 3D=1, de=1, cmy0*

Input: rgb/cmyk -> rgbde
Output: linearizzazione 3D a cmy0*

iscrizione TUB: 20160501-TI86/TI86L0FP.PDF /PS
Applicazione per la misura dell'output nella stampa di offset, separazionecmy0*(CMY0)
TUB materiale: code=rhata