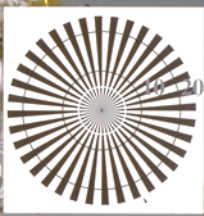
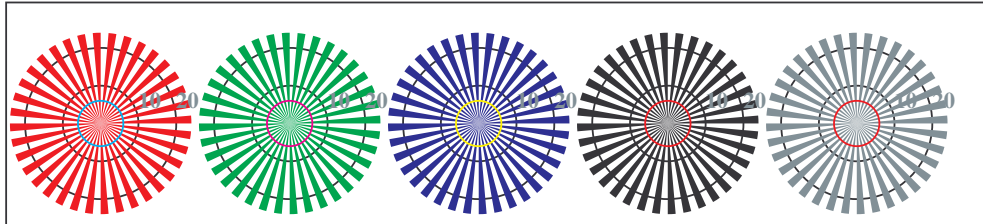


http://farbe.li.tu-berlin.de/TI86/TI86L0FP.PDF /PS; linearizzazione 3D
F: linearizzazione 3D TI86/TI86LI30FP.DAT nel file (F), pagine 2/2

vedi file simili: http://farbe.li.tu-berlin.de/TI86/TI86.HTM
Informazioni tecniche: http://www.ps.bam.de o http://130.149.60.45/~farbmetrik



TI860-3, Fig. D1Wdd: motivo floreale, 14 prova colori CIE i 2 + 16 grigio passi (sf); ; PS 4 colorimage



reticoli radiali W-R_d reticoli radiali W-G_d reticoli radiali W-B_d reticoli radiali W-N reticoli radiali W-Z

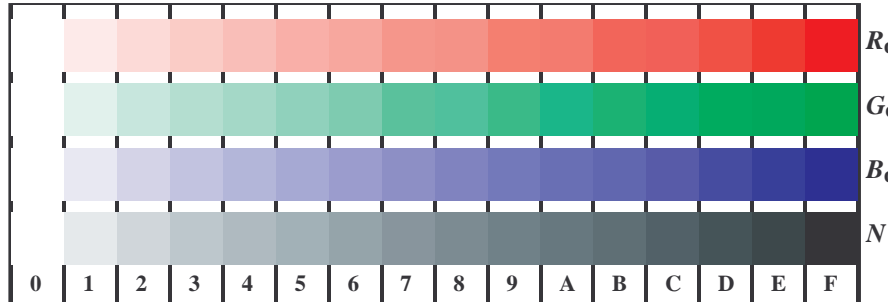
TI860-5, Fig. D2Wdd: reticoli radiali W-R_d; W-G_d; W-B_d; W-N; PS operator rgb->rgb_{dd} setrgbcolor



TI860-7, Fig. D3Wdd: 14 prova colori CIE i 2 + 16 grigio passi (sf); rgb/cmy0->rgb_{dd} setrgbcolor



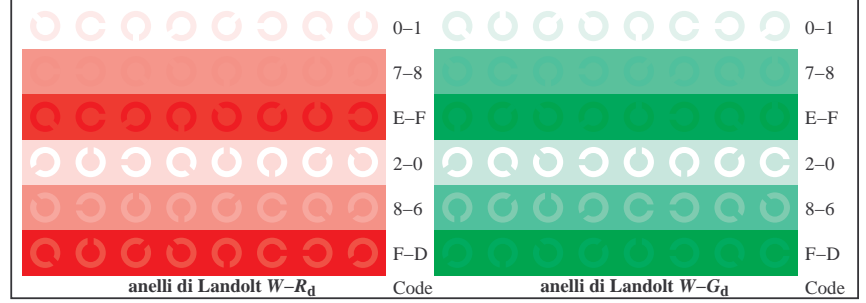
Grafico TUB-TI86; 4(ISO/IEC 15775 & ISO/IEC TR 24705)
Tavola dei colori cromatici RGB, 3D=1, de=0, cmy0*



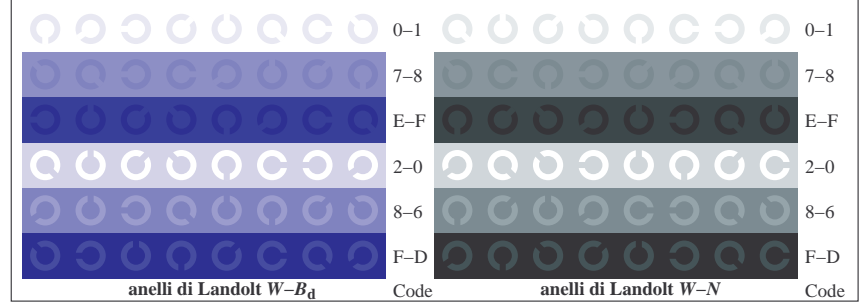
TI861-1, Fig. D4Wdd: 16 equidistante passi W-R_d; W-G_d; W-B_d; W-N; rgb/cmy0->rgb_{dd} setrgbcolor

+-:				lmno				pqrs				tuvw			
xyz;				hijk				hijk				lmno			
tuvw				defg				defg				+-:			
pqrs				+-:				+-:				xyz;			
lmno				xyz;				tuvw				lmno			
hijk				tuvw				defg				hijk			
defg				pqrs				!abc				defg			
!abc				8				6				!abc			
10				N				N				4			

TI861-3, Fig. D5Wdd: codice i Landolt anelli N; R_d; G_d; B_d; Z; PS operator rgb->rgb_{dd} setrgbcolor



TI861-5, Fig. D6Wdd: anelli di Landolt W-R_d; W-G_d; PS operator rgb->rgb_{dd} setrgbcolor



TI861-7, Fig. D7Wdd: anelli di Landolt W-B_d; W-N; PS operator rgb->rgb_{dd} setrgbcolor

Input: rgb/cmyk -> rgb_{dd}
Output: linearizzazione 3D a cmy0*

iscrizione TUB: 20160501-TI86/TI86L0FP.PDF /PS
Applicazione per la misura dell'output nella stampa di offset, separazionecmy0* (CMY0)
TUB materiale: code=rh4ta