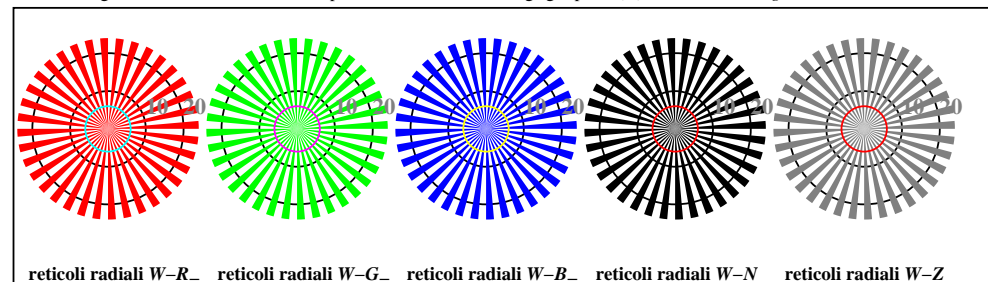
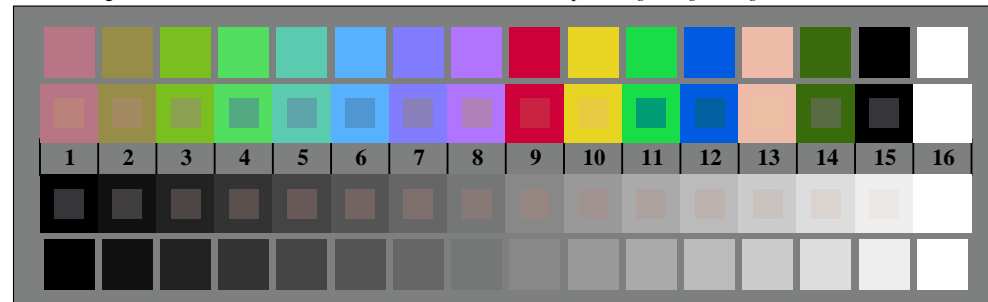




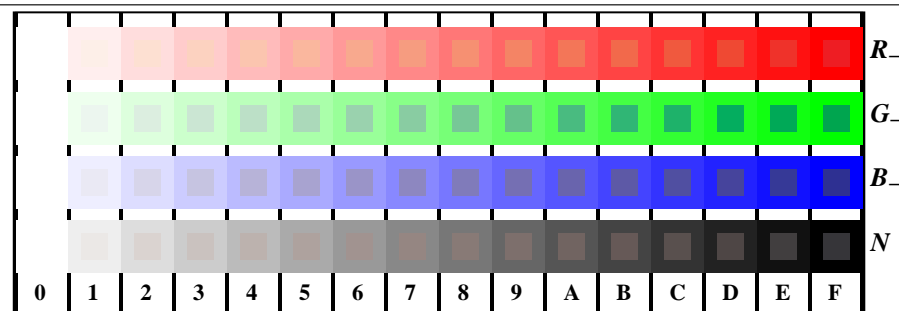
TI860-3, Fig. D1W-: motivo floreale, 14 prova colori CIE i 2 + 16 grigio passi (sf); PS 4 colorimage



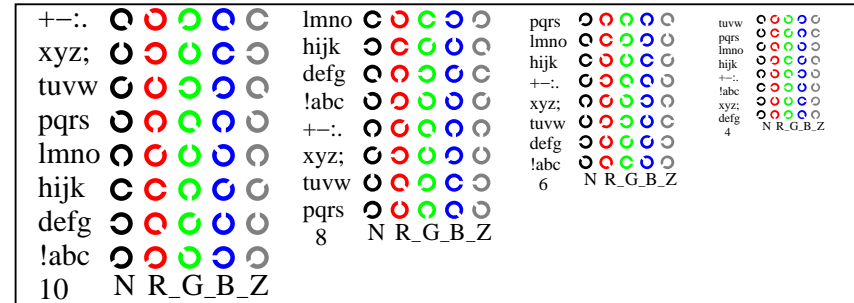
TI860-5, Fig. D2W-: reticoli radiali W-R; W-G; W-B; W-N; PS operator rgb->rgb_setrgbcolor



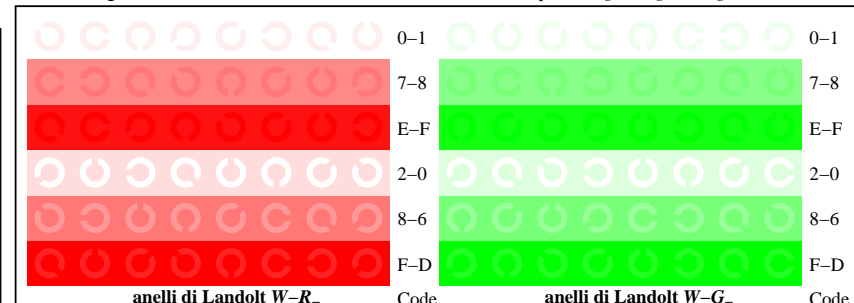
TI860-7, Fig. D3W-: 14 prova colori CIE i 2 + 16 grigio passi (sf); rgb/cmy0 set(rgb/cmyk)color



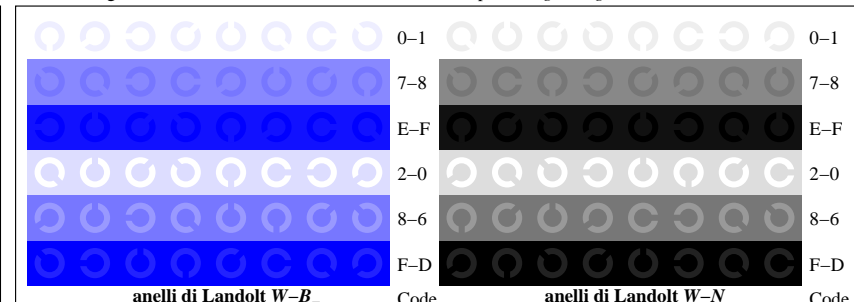
TI861-1, Fig. D4W-: 16 equidistante passi W-R; W-G; W-B; W-N; rgb/cmy0 set(rgb/cmyk)color



TI861-3, Fig. D5W-: codice i Landolt anelli N; R; G; B; Z; PS operator rgb->rgb_setrgbcolor



TI861-5, Fig. D6W-: anelli di Landolt W-R; W-G; PS operator rgb_setrgbcolor



TI861-7, Fig. D7W-: anelli di Landolt W-B; W-N; PS operator rgb_setrgbcolor