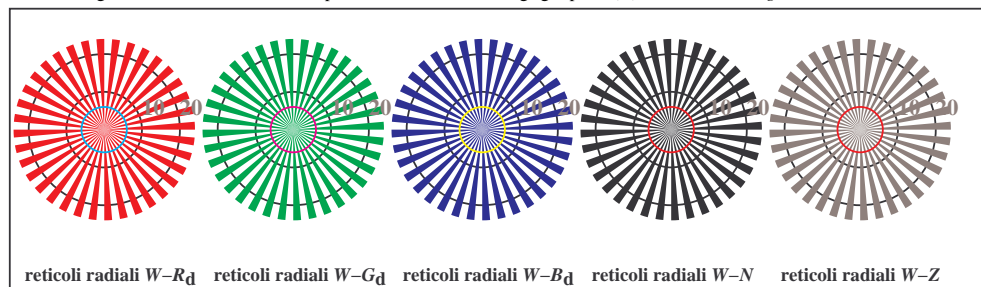
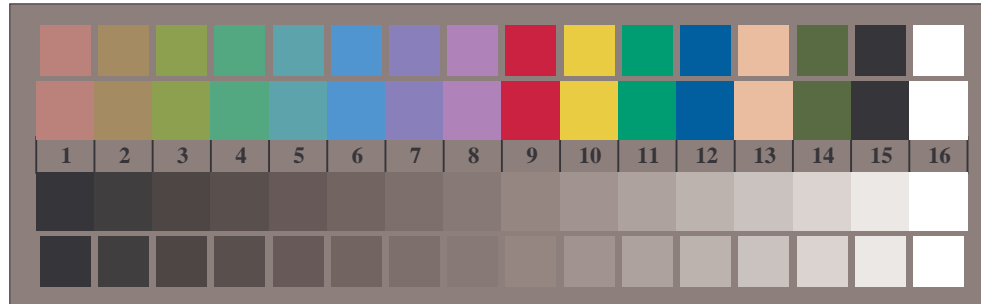




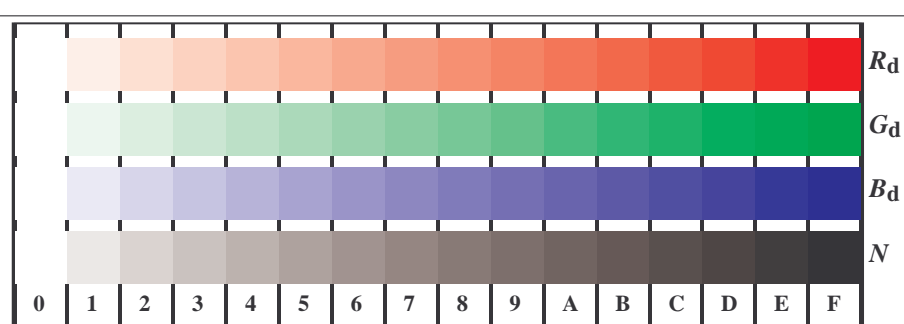
TI860-3, Fig. D1Wd: motivo floreale, 14 prova colori CIE i 2 + 16 grigio passi (sf); ; PS 4 colorimage



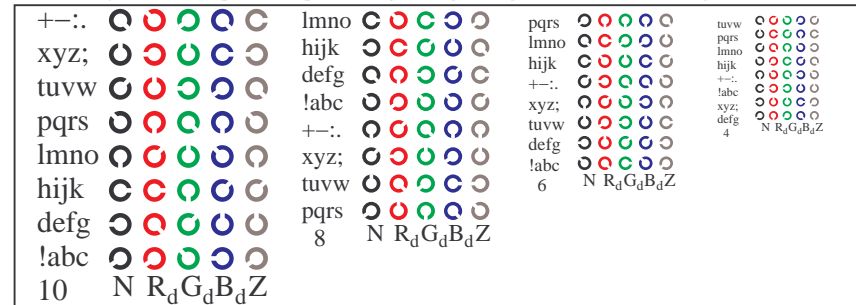
TI860-5, Fig. D2Wd: reticoli radiali $W-R_d$; $W-G_d$; $W-B_d$; $W-N$; PS operator $rgb \rightarrow rgb_d$ setrgbcolor



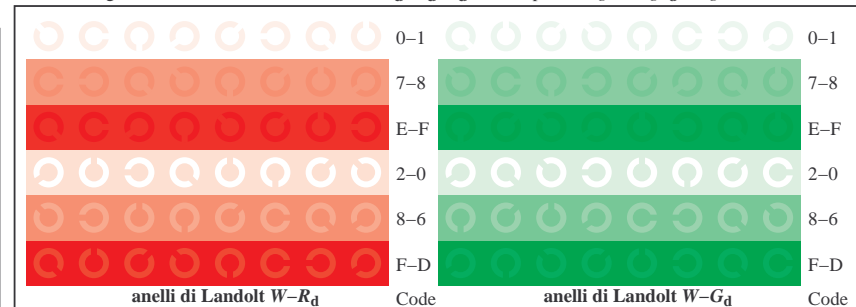
TI860-7, Fig. D3Wd: 14 prova colori CIE i 2 + 16 grigio passi (sf); $rgb/cmy0 \rightarrow rgb_d$ setrgbcolor



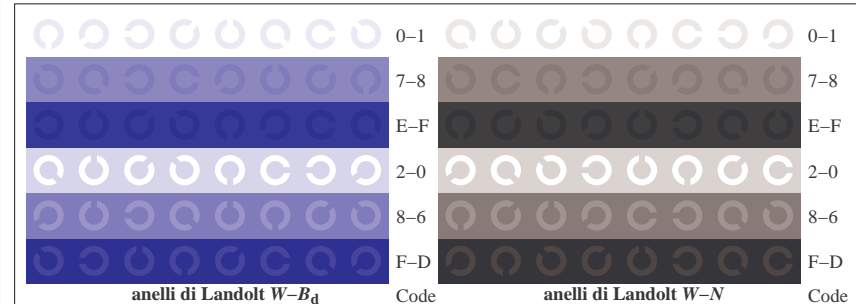
TI861-1, Fig. D4Wd: 16 equidistanti passi $W-R_d$; $W-G_d$; $W-B_d$; $W-N$; $rgb/cmy0 \rightarrow rgb_d$ setrgbcolor



TI861-3, Fig. D5Wd: codice i Landolt anelli N ; R_d ; G_d ; B_d ; Z ; PS operator $rgb \rightarrow rgb_d$ setrgbcolor



TI861-5, Fig. D6Wd: anelli di Landolt $W-R_d$; $W-G_d$; PS operator $rgb \rightarrow rgb_d$ setrgbcolor



TI861-7, Fig. D7Wd: anelli di Landolt $W-B_d$; $W-N$; PS operator $rgb \rightarrow rgb_d$ setrgbcolor